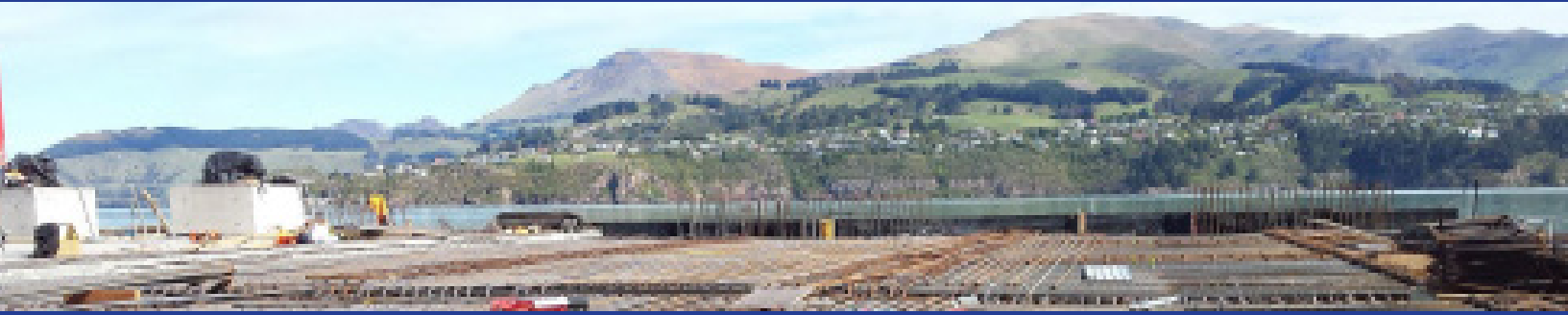


CANZAC® | GROUP

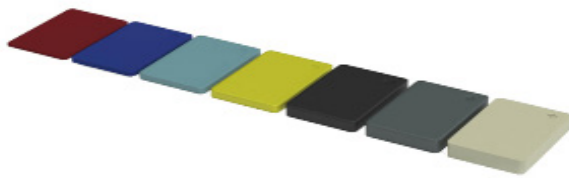
Improving the performance of concrete worldwide®



GENERAL CONCRETE ACCESSORIES

PACKING SHIMS

Designed for packing underneath concrete precast or tilt-up panels, to gain alignment with a non-skid surface. Colour coded by thickness for ease of selection. Shims are manufactured from quality plastic and tested with compressive loads up to 20 tonnes.



KEY FEATURES

- Loads up to 20 tonnes
- Colour coded for ease of selection
- Non-skid surface
- Lightweight design

APPLICATIONS

- Commercial & civil applications such as packing under panels, machines, doors and window frames

CODE	DESCRIPTION	BAG QTY
94 405	1mm RED PACKING SHIM HALF (98x87mm)	100
94 407	1mm BROWN PACKING SHIM WHOLE (150x100mm)	200
94 412	2mm BLUE PACKING SHIM WHOLE (150x100mm)	200
94 413	3mm GREEN PACKING SHIM WHOLE (150x100mm)	100
94 417	5mm YELLOW PACKING SHIM WHOLE (150x100mm)	100
94 415	6mm GREEN PACKING SHIM HALF (98x87mm)	50
94 420	10mm BLACK PACKING SHIM HALF (98x87mm)	50
94 422	10mm BLACK PACKING SHIM WHOLE (150x100mm)	40
94 425	15mm GREY PACKING SHIM WHOLE (150x100mm)	40
94 430	20mm WHITE PACKING SHIM WHOLE (150x100mm)	30