

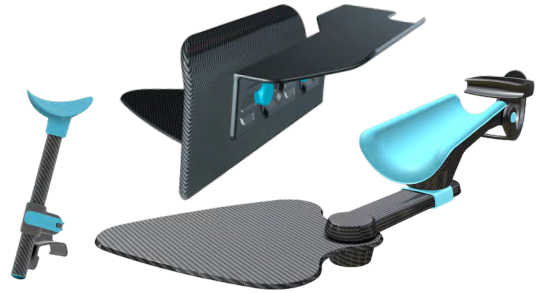


EN

| adeptmedical.com

ADEPT

Medical
Supporting you



Issue Date: 12/2025

STARSYSTEM

AM0160 • AM0100 • AM0140

Product Brochure

Right-side optimised radial access positioning system for interventional procedures

The STARSsystem is a patient positioning solution for radial artery access in image-guided endovascular procedures.

It includes the STARBoard, an adjustable arm board that supports access on either arm, plus workflow-specific accessories: STARSupport enables left-arm access while allowing the clinician to work from the right side, and STARTable provides an ergonomic work surface with integrated scatter radiation protection.

Designed to streamline right-side clinician workflows, the STARSsystem supports distal and proximal access on either arm. It improves patient comfort, enhances clinician ergonomics, and streamlines workflow in imaging labs. The system installs quickly to any angiography table and accommodates a range of body sizes.



- ▶ Right-arm optimised setup for distal and proximal radial artery access
- ▶ Ergonomic surface for clinician
- ▶ Adjustable wrist control
- ▶ 0.5 mm Pb scatter radiation shielding
- ▶ Radiolucent carbon fibre
- ▶ Arm pad for pressure relief
- ▶ Self-adjusts to arm length and patient size

STARBoard – Wrist Positioning

Improve access and patient stability by holding the wrist in hyper-extension, then shifting to a relaxed position with adjustable screws for fine-tuned wrist control.



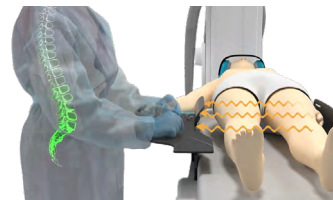
STARSupport – Left Access

Enables left-arm access while maintaining right-side clinician workflow after sheath placement.



STARTable – Ergonomic Work Surface

Provides a stable work surface with integrated 0.5 mm Pb scatter radiation protection, adjustable to suit clinician positioning.



Arm Pad – Patient Comfort

Reduces pressure with a radiolucent memory foam pad that supports clear imaging and is easy to clean.



Product Codes

AM0160

STARSystem

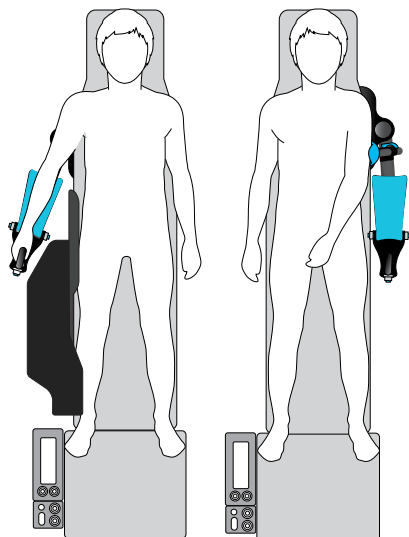
(STARBoard + STARTable + STARSupport)

AM0100

STARBoard + STARSupport

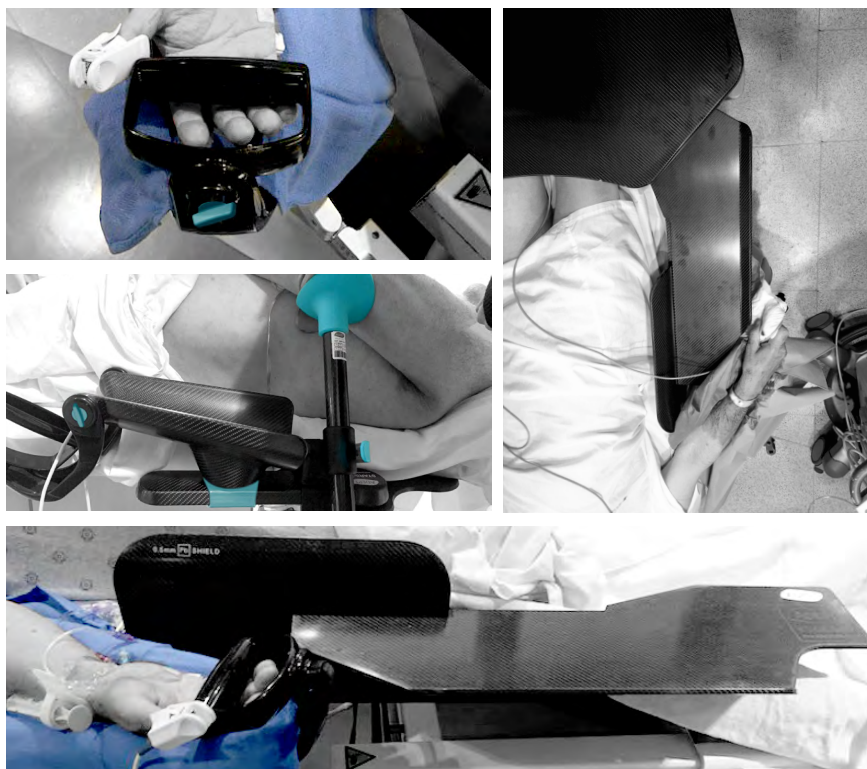
AM0140

STARTable



Applications

Endovascular procedures via the radial approach



Specifications

Device	STARBoard	STARTable	STARSupport
Dimensions	 *Length adjustable from 819 - 964 mm	 *Length adjustable from 788 - 909 mm	
Weight	1.3 kg	3.0 kg	0.4 kg

Contact us for further details at adeptmedical@adept.co.nz



Manufacturer

Adept Medical Ltd
2-6 McDonald St, Morningside
Auckland 1025, New Zealand