



PENNY LANE  
CENTERS  
*Transforming lives*



# 55th Anniversary

55 YEARS OF TRANSFORMING LIVES

## 2024 Annual Report





## Executive Summary

### Mission & Values

We empower hopes and dreams. Our values are commitment, community and collaboration. We welcome all clients regardless of gender, race, age, religion, disability, marital status, ethnic background, sexual orientation, gender identity and gender expression.



### HISTORY

It began with a dream.

Ivelise Markovits (Ive; "E-vay") founded Penny Lane in 1969. Upon graduating from high school in her native Puerto Rico, Ive (pictured, 1979) and her family moved to Southern California. In college, Ive was a feminist, socio-political activist and a peace marcher. Her sense of justice was already very strong. After graduating from college, Ive began her career as a placement officer for the Los Angeles County Probation Department. She was responsible for finding residential treatment facilities for female wards of the court. In a very short period of time, Ive became frustrated and disillusioned with the near void of adequate treatment facilities available to girls, especially those who were a bit more challenging than others. Ive's personal values could not let her ignore this gross injustice. Thus began the dream.

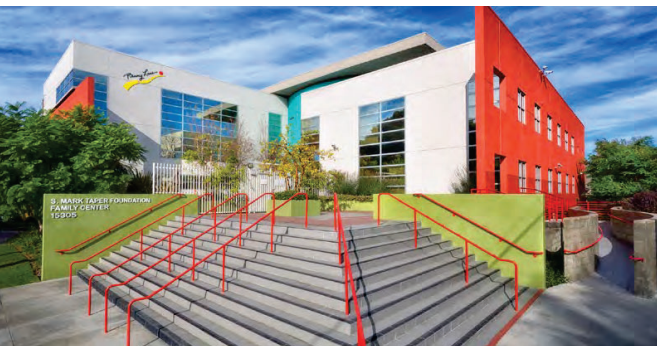


Over the next few months, while still working for the Probation Department, Ive began to pull together the pieces that would go into developing a strong residential treatment program for teen aged girls. Despite enough hurdles, obstacles and challenges to discourage all but the most completely dedicated, Ive stood fast and prevailed. On December 15th, 1969, Penny Lane became a functioning reality.



The foundation's nickname, Penny Lane, was taken from the upbeat, cheerful Beatles tune that celebrates the simple joys of life. What began as a group home for a handful of adolescent girls has grown into a multi-service organization that serves 3500 children, youth and families monthly and employs over 500 full time social service providers and support staff. Penny Lane's Administration is located in North Hollywood. In our North Hills location we provide Transitional and Permanent Housing for former foster youth, Foster Care and Adoption Services, Family Preservation and Intensive Services as well as a Mental Health Services. Penny Lane has additional offices in Commerce and the Antelope Valley providing similar services.





**We're Penny Lane Centers.** Our dedicated staff works with clients, professionals, community partners and government agencies to transform the lives of thousands of children, youth and families each year. We offer a continuum of programs in a variety of locations throughout Los Angeles County. **We choose to lead with a heart centered culture,** to be innovative and to be open as this is at the core of who we are. We understand that kids, families, staff and community all basically want the same thing. Everyone desires the feeling of belonging and connection—a sense of purpose that is recognized and valued by others. We humbly welcome everyone to our circle and embrace, empower, and protect those in need.

## A LETTER FROM OUR CEO .....

Dear supporters and friends,

As we reflect on Penny Lane Centers' 55th anniversary, we are filled with gratitude for the countless lives transformed through our mission to provide hope, healing, and empowerment. For over five decades, we have been a beacon of support for our communities, standing steadfast in our commitment to create a brighter future for those we serve and support. We continue to be a lighthouse for love.

This year we continued to strengthen our impact in transformative ways. We proudly launched a 24-hour mobile crisis response team, a groundbreaking initiative designed to serve as a compassionate alternative to 911 calls. This program is an essential step in reimagining crisis response, and ensuring that individuals in need receive immediate, appropriate, and kindhearted life-changing care.

We also celebrated the 15th anniversary of Abbey Road with the milestone of opening Imagine Village II in Lancaster while also breaking ground on the Rigby in North Hills. These projects symbolize our commitment to providing safe, supportive, and dignified housing for those in need. We know we are creating community, not just brick and mortar structures.

Our pledge to social and racial justice remains a cornerstone of our work. This year we hosted two powerful conferences that challenged and inspired us. The EDGY conference, themed, "Just Say Gay!" served as a rallying call to affirm the rights and dignity of our LGBTQ+ community. The Rise Up Racial Justice Conference with its theme "What is Your Story?" reminded us of the power of storytelling to dismantle barriers, build bridges and create transformative change.

These moments, alongside our daily acts of service, exemplify our enduring promise to stand with and for our communities. At the heart of everything we do is a profound belief in the potential for change, the strength of connection and the resilience of the human spirit.

As we move forward, we are inspired by the foundation laid by those who came before us and energized by the possibilities that lie ahead. Together, we will continue to rise to the challenge of transforming lives, creating equity, and building a future that reflects the values we hold dear.

Thank you for standing with us on this journey. Together, we are making a difference—one life, one story, and one moment at a time.

With love and light always,

*Wendy Carpenter*

Wendy Carpenter, Penny Lane Centers CEO







## THE NEED

Struggling individuals, youth and families striving for healthier, more productive, and happier lives in the communities we serve.

## THE GOAL

To transform the lives of those who come to us desiring a better life.

## HOW WE DO IT

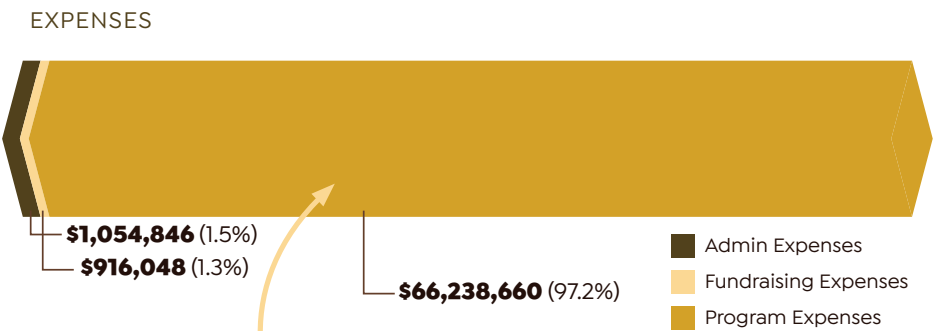
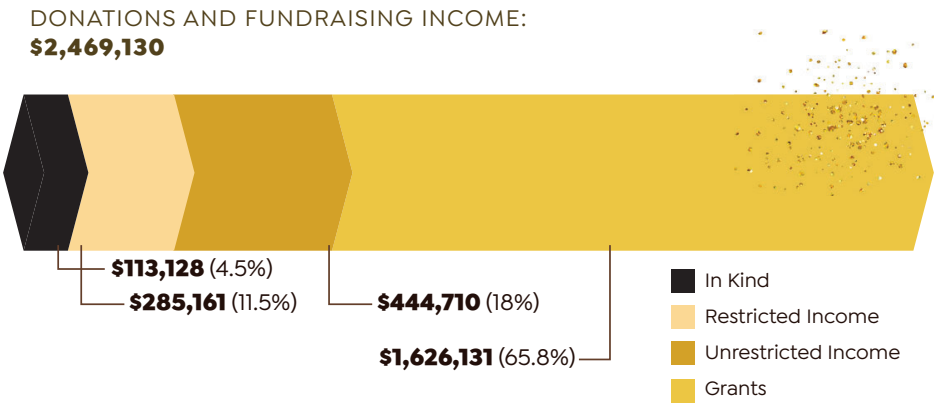
- Using a heart centered, strengths based, blame free culture.
- Approaching each person as an individual who is unique and special to determine which of our array of services can best impact their lives in a positive way.
- Meeting with and working with each person who comes to us where they are most comfortable.
- By stressing every ONE matters



## Financial Overview

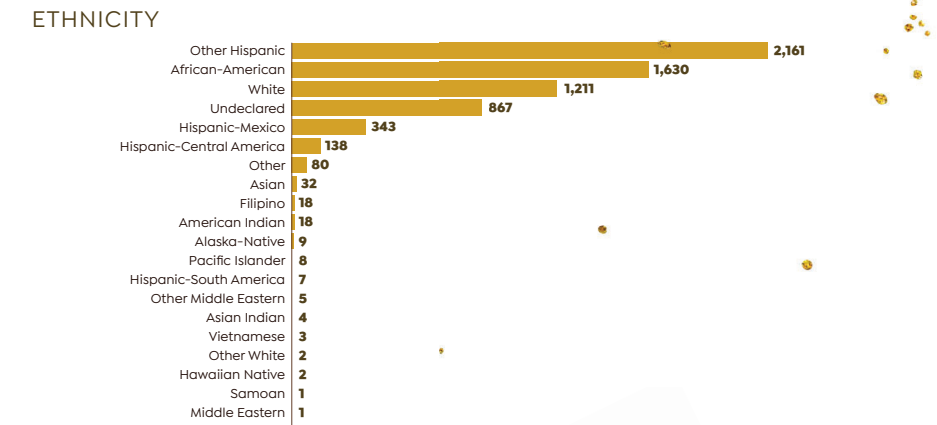
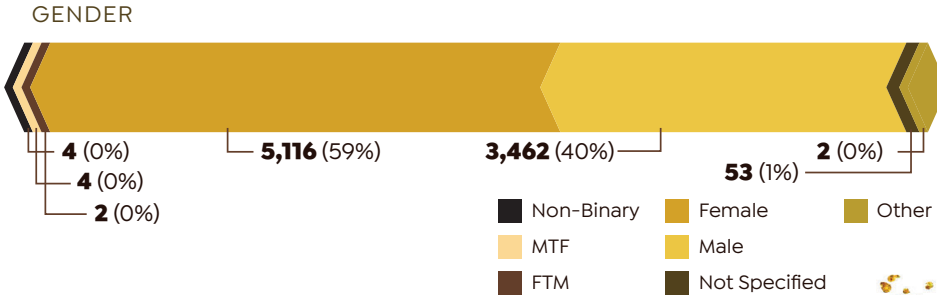
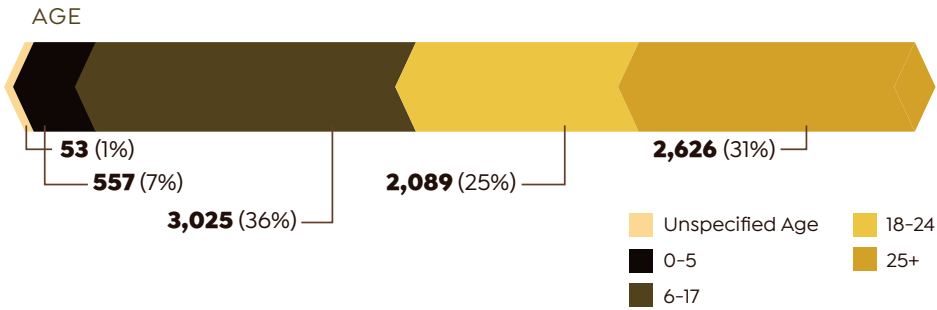


FINANCIAL INFORMATION



**97 cents of every dollar** that comes in goes directly to helping change and improve the lives of children, families and individuals in our care.

THOSE WE SERVE





## Programs Overview

### COMMUNITY PROGRAMS

#### **Supported Employment:**

Supported Employment services can be accessed as part of our adult CalWORKs program in the Antelope Valley. The Supported Employment program helps CalWORKs participants interested in working to obtain and maintain jobs of their choosing.

#### **Employment Support Program (ESP):**

An immersive one-on-one educational program that serves Transitional Age Youth (ages 16-25) in the San Fernando Valley, who are receiving ongoing Department of Mental Health therapy services. ESP prepares and assists youth in gaining permanent, entry-level, or mid-level employment in their community through Education, Preparation and Guidance.

#### **Unarmed Model of Crisis Response (UMCR):**

UMCR is a collaborative program with the LAPD, serving the Devonshire and West Valley reporting districts. The team responds to non-violent 911 calls involving mental health crises, substance use, suicide threats, behavioral distress, conflict resolution, and welfare checks, providing social services support in place of traditional law enforcement intervention.

### **Katrina's Success Story**

FROM FOSTER YOUTH TO BOARD MEMBER

It just takes one person to change your life. Meet Katrina Killoran - a former Penny Lane Foster Youth who found at Penny Lane that one person who changed her life for the better.

Katrina walks us through her childhood in foster care, the struggle to keep her siblings with her, and the difficulty in not wanting to talk about it. When she came to Penny Lane, she didn't have too much hope but meeting her social worker, Christina Vella, changed everything.

Watch their video [here](#).





LGBTQ+ PROGRAMS

Embracing Identities:

This program is designed to help meet the needs of LGBTQ+ Transitional Age Youth (TAY) – ages 16-25 years old through support groups, case management, and trainings. We also recognize the importance of community education and empowerment. The program offers workshops and LGBTQ+ Toolkit Trainings to promote understanding and acceptance for all.

Tailored Services to Youth:

Penny Lane’s Tailored Services to Youth (TSY) Program provides case management, mentorship, and collateral services for LGBTQ+ youth and young adults ages 2-25 who have a current or previous DCFS case. Currently this program is available in Service Areas 1 and 7, including the Antelope Valley, East LA, Commerce, Whittier, and surrounding areas.

Levi’s Success Story

AN LGBTQ+ SUCCESS STORY

From foster care to homelessness, Levi Nunez’s childhood was anything but easy. Abused by foster parents and shunned for being LGBTQ+, he found himself homeless and hopeless at 17. Penny Lane’s Homeless Transition Age Youth (TAY) Drop-in Center in Commerce gave him the support he needed to be seen and heard. Now, as a peer support navigator, he helps youth facing similar struggles.

Levi is thriving at Penny Lane, where he feels valued—and most importantly, he’s part of our family!

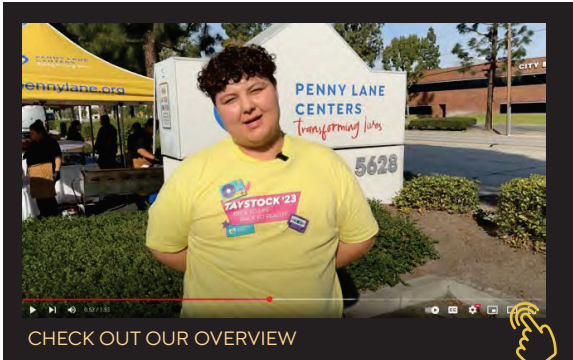
Watch their video [here](#).



YOUTH PROGRAMS

**Transition Age Youth Drop-in Center (TAY Center):** TAY stands for Transition Age Youth. It refers to young adults ages 16-25 who are experiencing homelessness or are at risk of homelessness, they face a number of challenges, including lack of access to housing, employment, and healthcare. They are also more likely to experience mental health and substance abuse problems.

In 2020, there was a 19% increase in homelessness among Transition Age Youth (TAY) Households and Unaccompanied Minors, which includes both individuals aged 18-24 and members of families headed by persons aged 18-24. A TAY Center plays a vital role in supporting homeless youth, providing a safe space for youth to go during the day and evening, and they offer a variety of services that can help youth get back on their feet. TAY Programs also help to reduce youth homelessness in our communities. Check it out to learn more or join our weekly youth groups- we are here for you!



CHECK OUT OUR OVERVIEW

TAY Drop-In Centers showed a remarkable <b>59%</b> growth!	Serving a total of <b>1,543</b> clients and creating a safe space for young adults in need.	That's <b>23%</b> of our 6,839 total clients!
--	---	---





## IN HOME SERVICES

### **Adoption:**

Penny Lane's adoption program offers services to prospective adoptive parents including training, completion of a home study, matching certified adoptive families with available children, and facilitating the adoption finalization. The families are continuously supported throughout the adoptive process.

### **Adoption Promotion Support Services (APSS):**

Services are provided to families in the adoption process who are now facing challenges that impact the family as a result. APSS Case Managers also provide on-going community training on topics that impact the adoption community. The adoption process does not end once a child is adopted, which is why Penny Lane offers lifelong post adoption support to all adoptees, adoptive families, birth parents, and other loved ones.

### **Foster Family Agency (FFA):**

Penny Lane's Foster Family Agency provides professional training and support for adults wanting to care for children and youth in foster care. The Foster Family program at Penny Lane Centers works to find safe loving families for children and youth, while offering both the child and the resource parent a wide array of social, therapeutic and supportive services.

### **Intensive Services Foster Care Behavioral Health (ISFC SEBN):**

Intensive Services Foster Care Behavioral Health Program is a placement for children/youth ages 6-21 who typically have behaviors that have led to multiple foster care placements, psychiatric hospitalization, or group home placements. These children/youth must have a family who will take the time to understand their special needs, and provide a loving, supportive environment for them to heal from the trauma they have experienced in their lives.



## FAMILY SERVICES

### **Relative Support Services (RSS):**

Supports relatives and non-related extended family members to meet the needs of children placed in their care.

### **Relative Home Assessment Services (RHAS):**

The Relative Home Assessment Services (RHAS) program supports relative caregivers through the process of getting their homes approved by the Department of Children and Family Services (DCFS). The program assists families with preparing their homes to meet the required home safety standards. The RHAS program also supports families during their post-approval. These are families that are taking in children who are relatives of theirs as they are unable for whatever reason to remain with their parents.

### **Prevention and Aftercare (P&A):**

A partnership between Penny Lane and The Department of Child and Family Services (DCFS) with the aim of helping families thrive and achieve bright futures. Our goal is to reduce child neglect and maltreatment by taking a holistic approach to each family's needs. Services provided include Case Navigation, Therapy, Parenting Classes, Family Workshops and Community Events. Currently this is available in SPA 1 in the Antelope Valley.

### **Family Preservation:**

This program is designed to preserve and strengthen families who are involved with the Department of Children and Family Services (DCFS) due to allegations of abuse or neglect. Families who receive Family Preservation services may have had prior challenges including domestic violence, substance abuse, mental health issues or others. The goal is to keep the family together and not have children taken from their homes.





## HOUSING PROGRAMS

**Transitional Housing Placement Program – NonMinor Dependents (THPP-NMD):** The Penny Lane THPP-NMD program provides housing for foster youth who have chosen to stay in foster care past their 18th birthday. Former foster youth who participate in this housing program are expected to display a medium to high level of independence.

**Transitional Housing Program (THP):** Housing, for up to 3 years along with supportive services for young adults 18-24 who are currently homeless or at risk of being homeless.

**Permanent Supportive Housing (PSH):** PSH offers a place where people experiencing chronic homelessness can finally find a safe, secure home, and begin to rebuild their lives. PSH isn't a temporary fix. It's a commitment to providing individuals with not just shelter, but a home for as long as they need it. Permanence underscores the belief in giving people the time and space to heal, grow, and thrive.

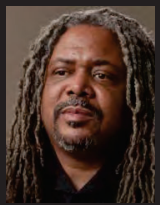
**Housing Supported Services Program (HSSP):** The Housing Supported Services Program is a specialized program that provides comprehensive and intensive field-based community mental health services designed to meet the unique needs of individuals in Permanent Supportive Housing (PSH).

### Sean's Success Story

AN ABBEY ROAD/HOUSING SUCCESS STORY

Sean Alred has been with Abbey Road and Penny Lane for over 20 years. He's earned his bachelor's and master's degrees while transforming lives, including his own.

Watch his video [here](#).



fun  
fact

# 29.3%

That's the increase in clients served our **Permanent Housing** program experienced this last year. This helped more individuals experience stable living conditions!



## MENTAL HEALTH SERVICES

### Intensive Field Capable Clinical Services (IFCCS):

The goal of IFCCS is to identify the children/youth and family's strengths and mental health needs for the purpose of preventing hospitalizations, decreasing involvement with the juvenile justice system and child protective services, and securing permanent placement.

### Enhanced Care Management (ECM):

Our ECM program, in partnership with L.A. Care, Health Net, and Anthem, is a voluntary benefit for Medi-Cal members who need extra support. Led by dedicated Care Managers and overseen by a Clinical Consultant, ECM offers personalized assistance beyond traditional healthcare. Members receive help with finding doctors, scheduling appointments, understanding medications, and accessing vital community resources like food, housing, and job counseling.

### Outpatient Services:

We provide a variety of mental health services, including individual, group and family therapy, as well as adjunctive services (Therapeutic Behavioral Services, Psychiatric (Medication Management), Psychological Evaluation, Case Management). Treatment services range from preventative care to intensive treatment modalities. We provide services in multiple settings (office, home, school, community) based on what the client and family needs are.

### Adult & Child Full-Service Partnerships:

FSP Services aim to help clients increase their ability to function at optimal levels, decrease homelessness and incarcerations, and reduce unnecessary medical and psychiatric urgent care and emergency room visits and hospitalizations. For those clients that are homeless, Adult FSP Services will help them transition from street to home by providing immediate and on-going assistance with securing and maintaining housing. Services are based on clients' individual needs and goals, with a commitment to do "whatever it takes" to help them progress toward recovery, health, and well-being.

# SUBSTANCE USE DISORDER

**Substance Use Disorder (SUD):**

SUD was born out of an urgent need for services to aid those with substance use and addiction challenges. The SUD program provides Outpatient and Intensive Outpatient treatment, as well as Recovery Support Services.

# DEIB & SUPPORT DEPARTMENTS

**Diversity, Equity, Inclusion, & Belonging (DEIB):**

Penny Lane is committed to advancing equity for all. Since our inception we have been an agency of action. We now find ourselves motivated more than ever to address the issues of racial and social justice for the underserved and marginalized communities. To that end we have taken great steps to share our DEIB vision with our staff, clients and the communities that we serve.

**Marketing and Fund Development:**

Penny Lane Centers is there providing a helping hand to empower people and addressing the needs of the communities we serve. Each year we must raise a great deal of money to provide our clients with essentials to improve their quality of life and to fill in the gaps that government funding does not cover. Our Marketing and Fund Development department is active in promoting the agency and getting us these needed donations.

We encourage everyone to volunteer and/or donate. For more information please see our website [www.pennylane.org/donate](http://www.pennylane.org/donate).







Seeing the need in 2009 to build and create new housing for those in need Penny Lane formed Abbey Road as a subsidiary company. Abbey Road has it's own Board of Directors which are approved by the Penny Lane Board of Directors. The day to day operations of Abbey Road are led by Maura Johnson, Director of Housing who reports directly to the CEO and CFO of Penny Lane.

MISSION & VALUES

Abbey Road is a 501(c)(3) nonprofit organization established in 2009 as a supporting entity of Penny Lane Centers, a California nonprofit corporation. Abbey Road’s mission is to expand, develop, and preserve supportive housing opportunities for low-income and homeless youth, families, and veterans. In essence, Abbey Road is responsible for constructing the physical housing buildings.

HIGHLIGHTS

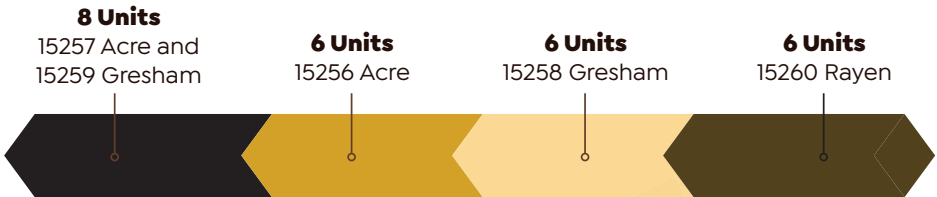
Abbey Road oversees a comprehensive portfolio of 734 units, including Transitional, Permanent, and those under construction and in predevelopment. This diverse range underscores our commitment to providing varied housing options to address community needs. We maintain a close collaboration with Penny Lane Centers, which provides supportive services for all housing units in our portfolio, aligning our missions and leveraging shared personnel for seamless integration. This partnership brings over 50 years of combined experience in serving foster children, former foster youth, and high-risk families in Los Angeles County.

TRANSITIONAL		PERMANENT		PREDEVELOPMENT	
15260 Rayen	6	Columbus Perm	6	The Rigby	64
15258 Gresham	6	Cedar Ridge	110	<b>UNDER CONSTRUCTION</b>	
15256 Acre	6	Mid Celis	20	The Main	64
15257 Acre and 15259 Gresham	8	Moonlight Villas	27	The Starr	52
		Imagine Village	75	Downey	60
		Metamorphosis on Foothill	47		
		Sun Commons	103		
		Imagine Village II	80		

TRANSITIONAL HOUSING ANALYSIS

Our Transitional Housing program has been a cornerstone of our commitment to providing short-term support for individuals in transition. We currently manage a total of 26 units across four properties, each designed to offer a safe and supportive environment.

TRANSITIONAL HOUSING: 26 UNITS





In 2024, we housed around

**785**

residents in our permanent housing program!

**26.8%**

are recently housed in our new program at Sun Commons!

Out of 468 occupied units,

**53.8%**

are families with at least one child in the home.

## IMAGINE VILLAGE II OPEN HOUSE

Abbey Road and Linc Housing, both nonprofit developers of affordable and supportive housing, hosted the grand opening for Imagine Village II an 80-unit large-family affordable and supportive housing community in the Lancaster area for low-income families and individual and people who have experienced homelessness. The Grand Opening celebration included dignitaries, community friends and residents.

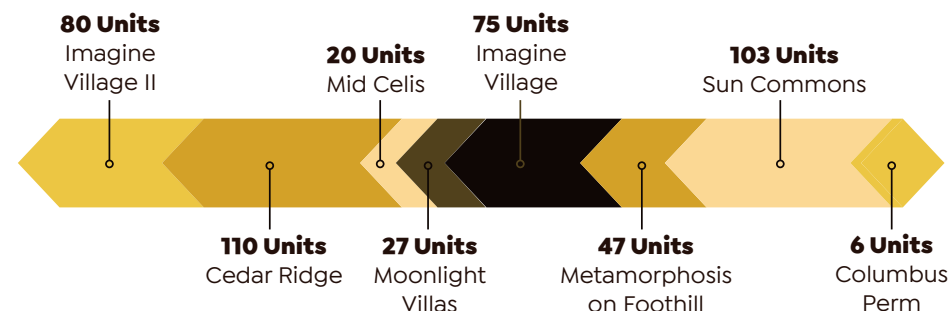
Watch the video [here](#).



## PERMANENT HOUSING ANALYSIS

Our Permanent Housing initiative continues to thrive with a total of 468 units distributed across several properties, including Columbus Perm, Cedar Ridge, Imagine Village, Metamorphosis on Foothill, Sun Commons, and more. We are excited to announce that in 2026, we will be opening The Rigby, adding 64 units for individuals and families. This expansion reflects our commitment to meeting the increasing demand for stable and lasting housing solutions in our community.

### PERMANENT HOUSING: 468 UNITS



## CONSTRUCTION & PREDEVELOPMENT PHASE ANALYSIS

Looking towards the future, we are excited about the construction and predevelopment phase that includes 240 units across four properties: The Rigby (currently under construction) and The Main, The Starr, and Downey (in predevelopment). These units represent our proactive stance in expanding our housing capacity to meet the evolving needs of the community. This forward-thinking approach aligns with our mission to create safe, affordable housing for children, adults, and families—offering sustainable and enduring solutions to housing challenges within our community.

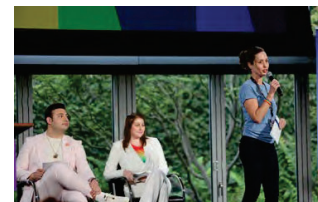
### CONSTRUCTION & PREDEVELOPMENT PHASE: 240 UNITS







## Penny Lane Conferences & Events



### EDGY CONFERENCE

On June 13th, Penny Lane Centers hosted the 14th Annual EDGY Conference, bringing together professionals, caregivers, therapists, and clients to explore how best to support LGBTQIA+ youth and families. The day began with a powerful short film urging everyone to “Say Gay,” followed by a mindfulness session led by Penny Lane team members. Conference Chairperson Cameron Glasgow then set the tone, emphasizing allyship and the role we all play in creating inclusive spaces. Throughout the day, keynote speakers, panelists, and workshops provided insights on community resources, interventions, and advocacy, while a robust resource fair fostered connection among attendees.

A highlight was the heartfelt stories shared by PLC staff members Levi Nunez and Naomi Novak, who spoke with vulnerability about their journeys and the support that helped them thrive. EDGY is more than a conference—it’s a space for learning, collaboration, and action, where community partners exchange ideas to better serve those entrusted to us. It reminds us that no one is an expert alone, but together, through shared experiences and diverse perspectives, we can create lasting change. Penny Lane Centers is proud to be an agency of action, committed to making a difference in the lives of our clients and communities. We are grateful to all our participants, presenters, partners, and volunteers who made this event possible and look forward to continuing this important work at EDGY 2025.

Click [here](#) to see a recap of Edgy 2024!



Penny Lane Centers proudly presents the 15th Annual EDGY Conference: *Queer Horizons*. This one-day event brings together professionals, educators, caregivers, youth, and allies to explore best practices in supporting LGBTQ+ youth and families.

*Queer Horizons* envisions a future where LGBTQ+ youth don't just survive—they thrive. Through expert-led workshops, panels, and networking, attendees will gain tools to create inclusive, affirming spaces. In a time of heightened adversity, this year's theme calls for resilience, allyship, and action to ensure every young person feels seen, supported, and empowered.





## LGBTQ+ GARDEN PARTY

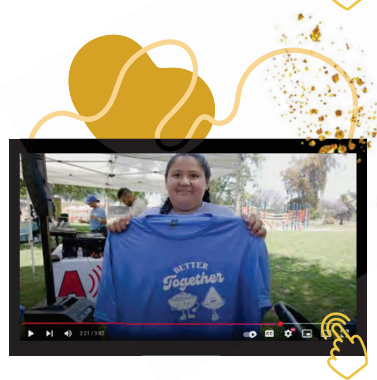
This past May at Penny Lane's North Hollywood location we had our Garden Party to support our EDGY: Embracing the Diversity of GLBTQ Youth; conference as well as our growing LGBTQ+ focused programs. Volunteers and staff had spent part of the prior day and the morning setting up tables, chairs, a dance floor, stage, and so much more. A live DJ, dancing and an amazing drag show brought out the fun while some heart warming presentations and stories inspired all in attendance. Art prepared by some of our LGBTQ+ clients were auctioned off with part of the proceeds going back to the artist. The event lasted a few hours but we know anyone that was there was touched and moved long after they left the party.

## SUMMER CARNIVAL FOR OUR FAMILIES

On a gorgeous summer day in June, the Penny Lane Summer Carnival at Woodley Park was a spectacular success, bringing joy and excitement to over 350 guests. This annual celebration united children and families from our foster services program for a day filled with fun, laughter, and community spirit. Thanks to the incredible support of Ares Management, Houlihan Lokey, and Wedbush, the carnival featured an array of activities that created unforgettable memories for everyone involved.

## TAYSTOCK 2024

What is TAY Stock? Tay Stock is an annual event held by the Penny Lane Centers TAY Drop-in Center programs in both the Antelope Valley and in Commerce. The purpose of TAY Stock is to gather community members and providers in one spot with the purpose of providing resources, information, donations and some fun and food to our community and its members. TAY Stock aims to deliver information that will be useful to the TAY (Transitional Age Youth, 16 - 25) community that can help to answer any questions they may have about where to go for certain resources, aid, shelter or work.

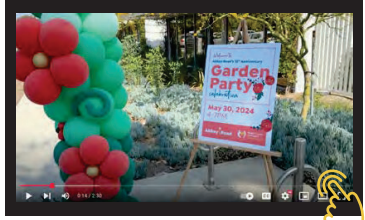
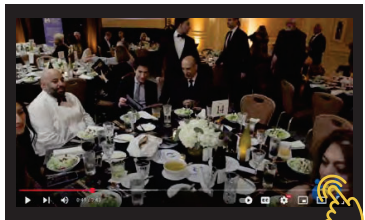


## 55TH ANNIVERSARY GALA

Penny Lane celebrated a significant milestone on October 26th, a beautiful evening at the Fairmont Hotel, in honor of our 55th Anniversary we had a beautiful Gala. This momentous event brought together over 320 guests, united by a common purpose—to support and celebrate our mission to Transform Lives and honor the remarkable journey we've taken together over the past five decades. As guests mingled and shared their experiences, it was evident that everyone had a blast. The joy was palpable, reflected in their faces and conversations. Laughter filled the air, and the connections made that night were a testament to the community spirit that binds us all together. The night was hosted by the charismatic Cleo King. A highlight of the evening was the showcasing of powerful videos that celebrated resilience, transformation, and inspiration. The emotional narratives resonated deeply with the audience, reinforcing the importance of our mission and the lives we touch every day. Funds raised during the gala will play a crucial role in expanding and improving our services, allowing us to continue our mission of providing safe and affordable housing for all. Thank you to our donors and staff for continuing supporting our organization and your commitment to transform lives.

## ABBEY ROAD GARDEN PARTY

The 15th Anniversary Celebration for Abbey Road which was held in the garden of Penny Lane's North Hollywood office. Our inaugural fundraising event was a great success in large part due to our Sponsors who demonstrated their companies commitment to the development of affordable housing in Los Angeles County by providing critically needed funds to provide a Road to Home for some of the most vulnerable people in our community. As the housing development arm of Penny Lane Centers, Abbey Road is guided by its mission to foster hopes and dreams through the development of affordable housing. Since 2013, Abbey Road has completed 495 units of housing and currently has another 240 units in development throughout Los Angeles County. Our housing developments provide safe and nurturing environments to ensure the long-term success for low-income and homeless youth, emancipated foster youth, at-risk families, and veterans. We are so grateful for their support!







## RISE UP CONFERENCE

*What's Your Story?* We have all asked that question of friends and colleagues, but never really waiting for the actual story to be told. We use it in greeting, but it can be used for so much more and that exactly is why Rise Up 2024 was all about Story Telling. Thursday, October 17th marked the 3rd annual Rise Up Conference. This year's theme, "What's Your Story," centered around the importance of sharing one's lived experience. We know that through storytelling, we can learn, connect, build empathy and be moved to action. Over 200 attendees gathered at the California Endowment Center to both hear stories and share stories. Throughout the day stories addressed privilege, the wealth gap, hope, advocacy, self-care, intersectionality, finding purpose, biases in the community, to name a few. Attendees were drawn to workshops that focused on addressing biased language in elementary schools, the impact of color blindness, advocacy and internalized racism, all while asking Who Writes Your Story. Throughout the day participants were sharing their positive experiences in the workshops and plenary sessions. There was a beautiful energy filled with learning the importance of storytelling. By sharing with each other we grow, learn, empathize and connect. Check it out so you too can Rise Up with us next year!

Join us for the 4th annual **Rise Up: A Racial Justice Conference**. The theme for this year's conference is *What Now - Our Values in Action*. Join us for an inspiring racial and social justice conference dedicated to turning principles into progress. This transformative event will bring together community partners, thought leaders, and community members to engage in critical conversations, workshops, and strategy sessions that move us from awareness to action. Together, we'll explore how to create meaningful change, challenge injustice, and uphold our shared values in today's world. Don't miss this opportunity to Rise Up, connect, and take the next steps toward a more just and equitable future.

Click [here](#) to see a recap of RiseUp 2024!



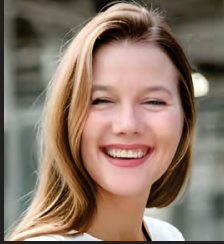
**Thank  
You**



## BOARD OF DIRECTORS



**President**  
Adrienne S. Khorasane  
[AKhorasaneel@pennylane.org](mailto:AKhorasaneel@pennylane.org)



**Vice President**  
Katrina Killoran  
[Katrina.Rosale@pennylane.org](mailto:Katrina.Rosale@pennylane.org)



**Secretary**  
Bruce Hector  
[Bruce.Hector@pennylane.org](mailto:Bruce.Hector@pennylane.org)



**Treasurer**  
Kathi Atkinson  
[kathi.atkinson@pennylane.org](mailto:kathi.atkinson@pennylane.org)



Alex Wheeler  
[Alex.Wheeler@pennylane.org](mailto:Alex.Wheeler@pennylane.org)



Annick Harmon  
[Annick.Harmon@pennylane.org](mailto:Annick.Harmon@pennylane.org)



Anthony Lee  
[Anthony.Lee@pennylane.org](mailto:Anthony.Lee@pennylane.org)



James Ocon  
[Jaime.Ocon@pennylane.org](mailto:Jaime.Ocon@pennylane.org)



Kathryn Cunningham  
[Kathryn.Cunningham@pennylane.org](mailto:Kathryn.Cunningham@pennylane.org)



Janine Newman  
[janine.newman@pennylane.org](mailto:janine.newman@pennylane.org)



Rocky DeAngelis  
[Rocky.Deangelis@pennylane.org](mailto:Rocky.Deangelis@pennylane.org)



Morgan Hakim  
[Morgan.Hakimi@pennylane.org](mailto:Morgan.Hakimi@pennylane.org)



Jonathon Dilworth  
[Jonathon.Dilworth@pennylane.org](mailto:Jonathon.Dilworth@pennylane.org)  
**Abbey Road, President**

## LEADERSHIP TEAM



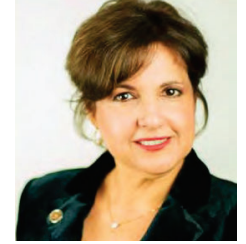
**Chief Executive Officer**  
Wendy Carpenter, MA



**Chief Operations Officer**  
Rosana La Fianza, MBA



**Chief Financial Officer**  
Bernie La Fianza, MBA



**Chief Programs Officer**  
Dr. Judith Sandino, Psy.D,  
LCSW

## THANK YOU TO OUR DONORS

Abbott	Andrea Gutttag	Bergman and Allderdice	Cameron T Turner
Adam Reider	Andrew Robbins	Bernie La Fianza	Captain Phil's Planet
Adrian Ayala	Andrew Smith	Bike Angels	Carl Jurgens
Adrienne Khorasane	Andy Gross	Bill Horton	Carlos Florez
Aiden Miranda	Andy Ortiz	Bob King	Carmela Carreno
Aimee Sealy	Ani Aghaeian	Bob Major	Carol Salgado
Aldayr Rios	Anna Dresner	Brad Moore	Carolina Sandoval
Alex Hancock	Annick Hamon	Bradley Newland	Caroline Carrigan
Alex Wheeler	Anthony Bird	Bram Tester	Caroline Leeb
Alexandra Cifuentes	Anthony Camacho	Brandon Gonzalez	Caroline Menjivar
Alexandra Palmer	Anthony Glenn	Brandon Higa	Carrol Parris
Alethia Calagias	Anthony Lee	Brett Pugliese	Caryn May
Alexsis Glenn	Anthony Munsey	Brett Swift	Cat Liu
Alisha Rivera Calderon	Antony Martin	Brett Villavicencio	Cesar Bueno
Alliant	Ares Management	Brooke Spanos	Charito Guerrero
Allied Home	Arisah Muhammad-Lewis	Brooks Cook	Charles Bone
Alondra Prendergast	Baby2Baby	Bruce Alyn Healey	Charles Gross
Amanda Lim	Barbara Powell	Bruce Hector	Charlotte Ferrel
Amplified Entertainment	Barbara Winters Halter	Bruce Saltzer	Chase - Community Boost
Anchulee Raongthum	Bayram Kansu	CAF America	Chasity Cole
Andrea Carpenter	Benjamin Borkenhagen	California Community Foundation	Cheryl Ann Baker
Andrea Espinoza	Benjamin Morris	Cameron Glasgow	CHP - West Valley
Andrea Giacusa	Benjamin Robbins		Chris Monica



Chris Tompkins	David Mastromatteo	Envy	Guadalupe Bayardo	Jasmine Kohanim	Jonathan Herman	Kristi Lopez	Maria Carmela Carreno
Christian Siegel	David McMullen	Eric Regalado	Halley Sanchez	Javi Cornejo	Jonathan Ritz	Kristin Malka	Maria Elisavetsky
Christina Kim	David Nguyen	Eric Smith	Hanna Barbeara	Jay Dyckman	Jonathon Dilworth	Kristina Colin	Maria Martin
Christine Calderon	David Westbay	Eric Whitaker	Harold Giroux	Jay Jaeger	Jose Luis Meraz	Kristofer O'Dowd	Maria Martinez
Christine Young	David Zukofski	Erik Villapando	Health Information Management	Jeff Isaacs	Josephine M Rodrigs	Krzysztof Kolata	Mariko Giese
Christopher Cantwell	Dawn Gonzales	Ethan and Elliot Liederman	Health Net	Jeff Wright	Judie Tallman	Lane Farnham	Marina Fox
Christopher Marion	Dawson Columb	Everly Morgan-Jones	Heather Tyrer	Jeff Zahnen	Judith Call	Lara Hoffman	Marion Getty-Tehan
City National Bank	Dean Anes	Farrell Bernard	Home Depot	Jeffery Miles	Judith Sandino	Laura Lundy	Mark May
CJ Carreon	Deanna Yadollahi	FedEx Ground	Houlihan Lokey	Jennifer Baratta	Judy Grant	Laura Smyth	Mark Moerman
Cliff & Deb Beckwith	Deanna Yadollahi	Fenix Desiderio	Howard Lovus	Jennifer Gomez	Julie Chirino	Laurie Klatscher	Mark Ratliff
Coldwell Banker Realty	Deborah Buttitta	Ferne Saltzman	HUB International Limited	Jennifer Gorman	Juliette Harris	Lawrence Jones	Mark Zutkoff
Colin Cassidy	Deborah Yerkes	First Citizens Bank	Huey Merchant	Jerair Khachoyan	Kaira Stewart	Leandro Lecaros	Marsh and McLennan
Colin Dunn	Del Richardson	Flagstar	Iain rennie-Law	Jerome Vitner	Kalea Neiviller	Lee Shamblin	Martha Walter
Cornelius Murphy, Jr.	Derek Balling	Flora Gonska	IMA Foundation	Jerry Alvarado	Kandace McCrae	Leigh Barrett	Martin Gustafsson
Counter Punch Studios	Desiree Powell	Fortress Investment Group	Isabela D'Agnenica	Jessica Sanchez	Kappa Alpha Psi	Leigh Pruden	Martin Hernandez
Craig Strong Group	Desiree Wadsworth	Francisco Flores	Issam Sweis	Jessie A. Meudell	Karen Meck	Lela Jones	Martin Hughes
CyberNet	Destinee Mack	Francisco Roman	Ivan Idzan	Jesus Martinez	Karina Karina	Levi Nunez	Mason Rippey
Cynthia Lynette	Devin Aguirre	Frank Cameron	Ivelise Markovits	Jewish Community Foundation	Karl Ikelman	Lillie Amezcuita	Mathew Want
Cynthia Shackelford	Dezhay Caraway	Frank Lopez	Jack and Jill	Jill Delaney	Karla St. Germain	Linda Jackson	Matt Lathrum
Dan Eckert	Dezhay Caraway	Frank Macias	Jacqui Khorasanee	Jill Roeb	Karma Shahin	Lisa Freiburger	Matt Marr
Dan Fisher	Diana McCabe	Franklin Hunting	Jake Barrett	Jill Vander Borgh	Katherine Kidwell	Living Hope Christian Fellowship	Matthew Craven
Dan Macias	Diane O'Neil	Frederick Roos	Jalinne Vasquez	Joan Sheppard	Kathi Atkinson	Liz Rosales	Maura Johnson
Dan McClean	Dilia Martinez	Gabriele Giuntoni	Jalissa McDuffie	Joanne Yokota	Kathryn Bailey	Logix Federal Credit Union	Maybelline Mejia
Daniel Gallegos	Don Waldman	Gabriele Givnton	James Bojaciuk	Joe Balsarotti	Kathryn Guarrieri	Lorelei Darling	Maynard Duncan
Daniel Grosz	Dorn Hetzel	Gaby Castaneda	James DeKay	Joe Califano	Katrina Killoran	Lorraine Schroe	Melanie Strong
Daniel Hekman	Dr Brooke Spanos	Gaby Segura	James Dixon	Joe Thacker	Katrine Cools Myra	Lori Armstrong	Melissa Talan
Daniel Kramer	Dr. Christina Vela	Gillian Villanueva	James Kubajak	Johanna Hoekstra	Keith Thode	Lorraine Schroe	MG Electric Inc
Daniel Milks	Dr. Von Simmons	Gina Schnell	James Lowery	John Adams	Kell Coulter	Louis Gamerman	Mia Choi
Danielle Gonzalez	Ed Taniguchi	Good+Foundation	James Rich	John Barcelona	Ken Banks	Luc Louis de Lairese	Michael Cavanaugh
Danielle Padilla	Edmund Boys	Grace Krilanovich	James Zukowski	John Bonny	Ken Mayer	Lusine Coppock	Michael Cebula
Danny and Jennifer Lerner	Edward Ortiz	Graham Orndorff	Jan Hacker	John Centeno	Kerry Stubbs	Lynn Katano	Michael Culver
Daryl Metzger	Edward Whiteside	Grant Watson	Jan Schroeder	John Forest	Kevin and Rebecca Anderson	Lynn Mizenko	Michael Dremluk
Dave Malott	Eileen Ordinetz	Greg Davis	Janet	John Melka	Kevin Ryan	Mane' Ristakian	Michael Haas
Dave Shay	Eleanor Castillo Sumi	Greg Radabaugh	Janet Potts	John Ortiz	Kevin Wilson	Manuel Garcia	Michael Haymer
David and Pat Westbay	Elizabeth Cullen	Greg Sanders	Janice Fingers	John Sovec	Kiana Mitchell	Marc St. Julien	Michael Kepe
David Carles	Elizabeth Dibble	Greg Shoemaker	Janice Grantz	John Stanford	Kitty Owaroff	Marcelina Ceballos	Michael Koeniger
David Carson	Elks Foundation	Greg Whipple	Janice Miller	John Virgona	Kris Evans	Marcia Bonner and Mike	Michael Murray
David Guthrie	Emery Younes	Gregory Chew	Janine Blain	Johnny Follin	Kristen Kiertzner	Margaret Blanchard	Michael Ripley
David Hampton	Entertainment Services	Gregory Zabitski				Margaret Reynolds	



Michael Rumfola	Parris Law Office	Robert Ziegler	Stefan Seifert	Timothy Crehan	Tony Davies	Victor Polites	Wendy Brown-Danks
Michael Setzer II	Pascal Behem	Rocky DeAngelis	Stephanie Levine	Timothy Mushel	Tony Eaglestone	Victoria Ku'uwehileipualani	Wendy Carpenter
Michelle Darmary	Pat Tallman	Rod Searcey	Stephen Pearson	Timothy O'Malley	Tony Miller	Victoria Blossom	Wesley Dierdorff
Michelle Ferrante	Patricia S Glasgow	Roger Burris	Steve and Kathy Schwartz	Tina Rhea	Twila Miles	Victoria Reti	Will Stewart
Mike Crosby	Patricia Tallman	Rolland Mattoon	Steve Uretsky	Toluca Lake Magical Holiday Parade	Vanessa Gibson	Vincent Baldocchi	William Mysliwiec
Mike Elling	Patrick Achis	Rosana La Fianza	Steve Vawter	Tony Balldona	Vanessa Peltier	Virtuous Games	William Refsland
Mike Horton	Patrick Quinn	Ruben Davis	Steven Collins	Tony Cardenas	Vardui Vardanyan	Wedbush	William Tabor
Mikel Maurolagoitia	Patty Fette	Rudy Perez	Subrata Sircar		Victor Holt	Wells Fargo Bank	
Mindy Caringola	Paul James Dell	Russell Houston	Sue Imperial				
Misak Chanchikyan	Paul Malysz	Ryan Shannon	Sue Moravec				
Mitchell Greene	Pauline Malcom-Thornton	Ryan Grulke	Sunrise				
Monica Cruz	Peaches Keen	Sam and Elizabeth Melehani	Susan Hixon				
Monique Merrit Romick	Pedro Partida	Samantha Wyllie	Susan Kahlert				
Monique Pride Brooks	Peter Nikkos	Samara Sin	Sushant Naidu				
Morgan Hakimi	Phillip Merker	San Fernando Santa Clarita (CA) Alumni Chapter	Schwab Charitable Foundation				
Morteza Yadollahi	Piers Napper	San Fernando Valley Woodworkers	Tabor Storage Solutions				
Motor4Toys	Pinks	Sandra Trudeau	Tai Thai				
Myles Ahead of Cancer - McGowan Family	PriceWaterhouse Coopers	SC Robinson	Tamara Metz				
Nancy Annick	Qua'deer Jones	Scott Cook	Tamie Houser				
Nancy Kalev	Quest Retreats	Scott Craig	Tamika Hill				
Nashla Barakat	R. Rex Parris	Scott Hedrick	Tanner Blew				
Neal Berliner	Rafael Lopez	Scott Helsby	Teresa Culver				
Neftali Desiderio	Raghuvee Ranganathan	Scott Henderson	Teresa Yadollahi				
Neil Murphy	Ralph Armstrong	Scott Ziola	Teri Tsang				
Neil Ottenstein	Randy Vonfeldt	Sean Dwyer	Thalia Sharpe				
New York Life	Raul Ruffin	Shalini Dixit	The Ahmanson Foundation				
Nicholas Borm	Ray Trent	Shaun Morrissey	The Blackbaud Giving Fund				
Nicholas Morshed	Ric Klingler	Shawn Broukhim	The Fanny and Svante Knistrom Foundation				
Nicole Alexander	Rich Correll	Shawna Pollock	The Guitar Center Company				
Nicole Rumfola	Richard Cadena	Shelter Partnership	The Guitar Center				
Nikita Belomestnykh	Richard Correll	Sherice Soper	Theodore Schneider				
Ninette Ayala	Richard Dickins	Sheryl Lautenschlager	Thomas Bourke				
Noah Shore	Richard Keenan	Shiva Berjis	Thomas Miller				
Nuccio Patti	Rick Kiertzner	Simon Trueb	Thomas Mischke				
Nydia Barakat	Rico Mariani	Soles4Souls	Tiffany Shin				
Oliver Broadrick	RJ Ober	Stan Logan	Timothy Bennett				
OneDigital	Rob Vander Sloot						
Pablo McCabe	Robert Bernardo						
	Robert Woyak						

**Our sincerest “thank you” to our donors. There are too many to include on this list but know that our hearts are full of gratitude for your donations and we appreciate you.**

## IN CONCLUSION

As we reflect on the past year, we are filled with gratitude and pride for the extraordinary journey we've shared together. Thanks to your unwavering support in the form of donations (cash/in-kind), commitment, and passion, we've been able to make a difference in the lives of those we serve and in the communities we impact.

This year has been a year of transformation—one that has pushed boundaries, fostered innovation, and, most importantly, brought about lasting change. With your help, we have been able to serve over 4000 children, youth, and families. This year, we also had the privilege of celebrating 55 years of empowering youth and families as well as 15 years of building safe, stable housing for homeless and low-income families and individuals providing them a fresh start and future opportunities for success. These monumental achievements would not have been possible without your belief in our mission.

We have expanded our programs to include an Unarmed Mobile Crisis Response team that works in collaboration with the City of Los Angeles and the LAPD to respond to non-violent calls from 911 within the Devonshire and West Valley reporting districts. The calls for the UMCRC team are those that may have a social services impact including but not limited to mental health, substance abuse, suicide threats, behavioral distress, conflict resolution, and welfare checks.

Every step we took this year was made possible by individuals like you, who believe in our vision and invest in our mission. Your generosity, time, and advocacy have been key to these accomplishments, and for that, we are deeply thankful. But while we celebrate what we've achieved, we are also excited for what lies ahead. The challenges and opportunities of the future are vast, and with your continued partnership, we are poised to create even more impactful change in the coming year.

As we step into another year of possibilities, we hope we can count on your ongoing support. Together, we can continue to dream bigger, aim higher, and make the world a better place, one meaningful action at a time.

