



# ViSight-3

## AUTOMOTIVE 4D IMAGING RADARS

ViSight-3 is a high performance, W-band, 4D imaging radar designed and built by Veldar for automotive and traffic monitoring applications.

ViSight-3 is ideal for applications that require high resolution all-weather vision, like autonomous trucking, pedestrian detection, and collision avoidance.

### 4D IMAGING

Delivers range, azimuth, elevation, and velocity data for all points in the radar point cloud.

### FLEXIBLE CONFIGURATIONS

Provides several modes of operation, allowing the user to select the range, resolution, frame rate, and data rate combination.

### MULTIPLE PROCESSING OPTIONS

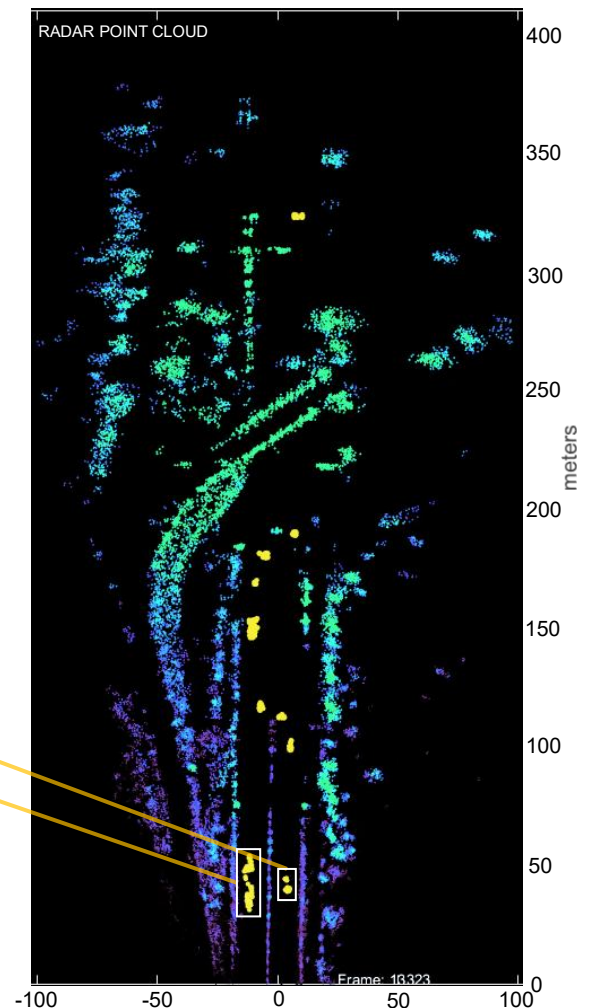
Process onboard or stream images and raw radar data to a host computer through the built-in 1 to 10 GbE interface.

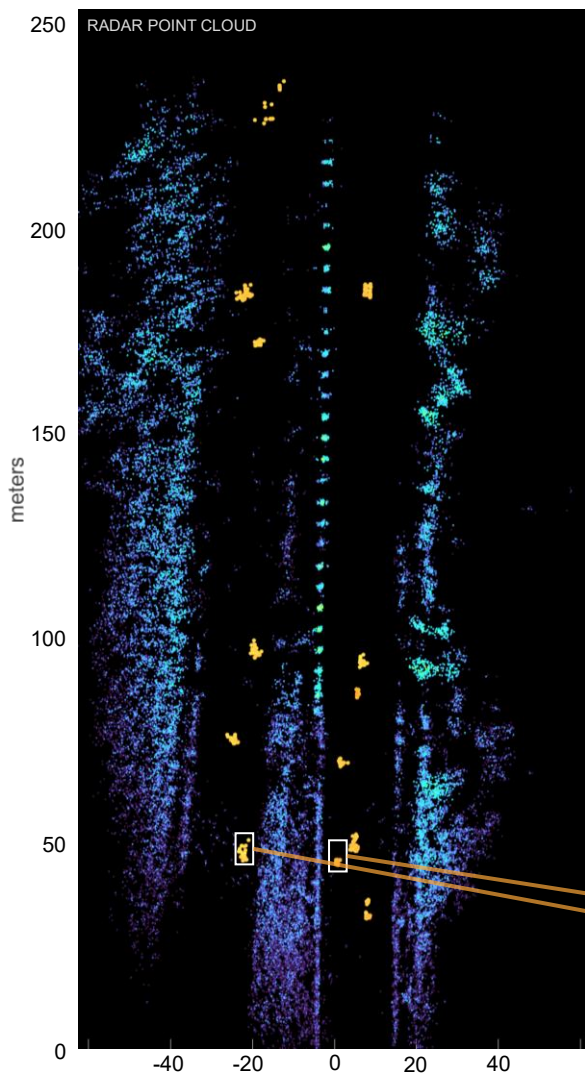


### TWO MODELS

ViSight-3D Optimized for small object detection at long range







ViSight-3C Balanced range and resolution for general use








## RADAR RANGE MODES

Six preset configurations available for quick deployment

Extra Long		600 m
Very Long		400 m
Long		250 m
Medium		100 m
Short		50 m
Ultra Short		25 m

## DETECTION PERFORMANCE

Traffic cones (-15 dBsm)	150 m	
Pedestrians (-5 dBsm)	300 m	
Small cars (10 dBsm)	600 m	

## ALL-WEATHER OPERATION

Vehicle and pedestrian imaging and obstacle detection in degraded visual environments including low light, fog, smoke, rain, and snow.



CAMERA

Radar detections in Long Range Radar (LRR)

## ViSight-3 Specifications

### PERFORMANCE

	ViSight-3C	ViSight-3D
<b>Azimuth Resolution</b>	1.25 deg	1.0 deg
<b>Elevation Resolution</b>	3.0 deg	3.0 deg
<b>Azimuth FoV</b>	90 deg	60 deg
<b>Range Resolution</b>	0.1 - 2.5 m (user selectable)	
<b>Velocity Resolution</b>	0.5 - 2.5 m/s (user selectable)	
<b>Velocity Max Unambiguous</b>	5 - 100 m/s (user selectable)	
<b>Azimuth Accuracy</b>	0.25 deg	
<b>Elevation FoV</b>	15 deg	
<b>Frame Rate</b>	10 - 16 fps	
<b>Max points / frame</b>	4,000 points	

### PHYSICAL & ELECTRICAL

	ViSight-3C	ViSight-3D
<b>Dimensions (cm)</b>	14 x 10 x 4	17 x 12 x 4
<b>Weight</b>	< 650 g	< 900 g
<b>Power Consumption</b>	< 20 W	
<b>Input Voltage</b>	12 – 48 VDC	
<b>Data Interface</b>	1 – 10 GbE	

### ENVIRONMENT

<b>Dust and Water</b>	IP67
<b>Operating Temperature</b>	-40 to +85 deg C
<b>Vibration</b>	High vibration environments

