



KALAN
AMPHIBIOUS TRACKED VEHICLE



 **KALAN**
AMPHIBIOUS TRACKED VEHICLE



When nature forces strike.

CONTENT

| | |
|-------------------------------------|----|
| KALAN | 02 |
| Key features | 03 |
| Crew cabin | 04 |
| Transport | 05 |
| Firefighting vehicle..... | 06 |
| Floods and flooded areas | 07 |
| Rescue and evacuation | 08 |
| New Space Technologies company..... | 09 |



- / Evacuation and transport across water and extreme terrain
- / Adaptable platform for specialized missions
- / Designed and built in the Czech Republic



AMPHIBIOUS VEHICLE – SPECIAL PLATFORM FOR CIVILIAN RESCUE FORCES

is co-financed with the state support of the Technology Agency of the Czech Republic and the Ministry of Industry and Trade of the Czech Republic within the TREND Programme.

EVACUATION AND PERSONNEL DEPLOYMENT



- / Safe evacuation of people at risk
- / Deployment of rescue units to disaster areas

LOGISTICS AND HUMANITARIAN SUPPORT



- / Transport of bulk cargo, water tanks, pallets, and containers
- / Rescue equipment and vehicles

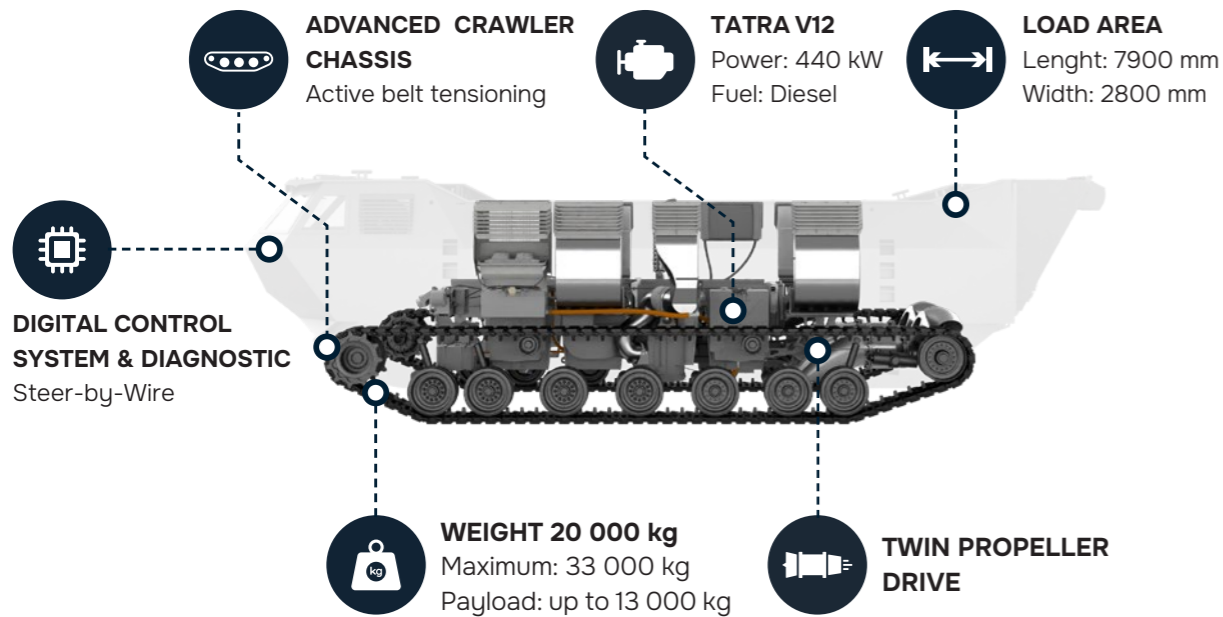
FIREFIGHTING VEHICLE



- / Roof and front-mounted firefighting monitors
- / Integrated water and foam tanks
- / High-capacity pumping system

KEY FEATURES

An amphibious platform engineered for demanding missions



www.newspacetechnologies.com

KALAN delivers where it matters most.



SPEED

50 km/h road
35 km/h terrain
12 km/h water



CAPACITY

1 + 2 crew members
up to **70** evacuated people



SIZE

11,12 m length
3,3 m width
3,18 m height



SIDE SLOPE

30%



GRADIENT

60%



OBSTACLES / APPROACH ANGLES

Vertical obstacles: **650 mm**
Departure: **40°** / Approach: **42°**



TRENCH CROSSING

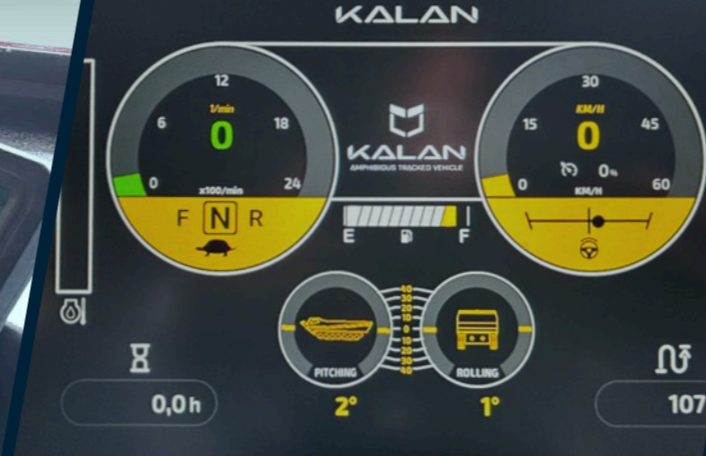
2,5 m

CREW CABIN

Ergonomically designed cabin for intuitive vehicle and vessel control.



www.newspacetechnologies.com



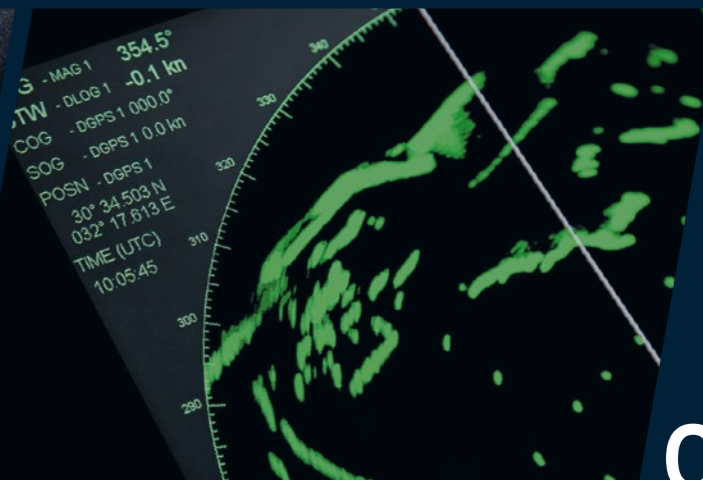
/ Intuitive large-format touchscreen displaying all essential control parameters



/ Electronic mirrors with optional 360° surround-view cameras



/ Effortless driving and sailing with seamless transition between land and water



/ Optional navigation and sensor systems.
/ Prepared for installation of user-specified comm. systems

TRANSPORT

Exceptional off-road capability

Overcomes even the most challenging terrain. Tested in conditions where conventional equipment fails. Thanks to its advanced tracked drive, KALAN performs reliably in extreme environments.



High payload capacity – up to 13 tons

With its outstanding load capacity, KALAN transports supplies, heavy equipment, fuel, humanitarian aid, and specialized cargo exactly where they are needed most.



Self-loading capability

Optional winch and floor-mounted rollers enable self-loading of heavy cargo, without the need for external equipment such as forklifts.



Built for Chaos,
Ready to Rescue.

Optional equipment



Hydraulic arm



Container loader

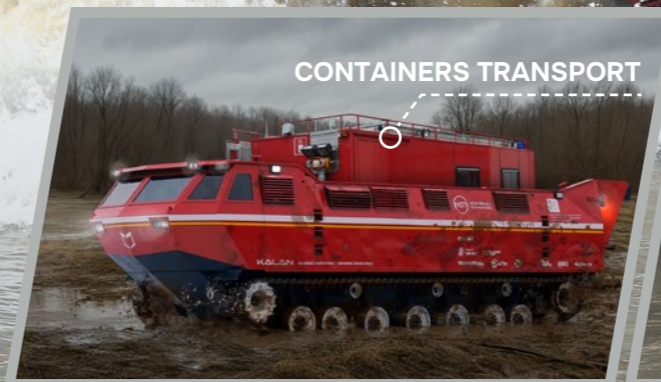


Floor-mounted
rollers

Pushing the boundaries of transport in crisis situations.



CONTAINERS TRANSPORT



VEHICLE TRANSPORT



FIREFIGHTING VEHICLE

Developed in close cooperation with the Fire and Rescue Service of the Czech Republic.



Firefighting operations

The vehicle can be equipped with powerful remote-controlled firefighting monitors mounted on the roof or the front of the vehicle. The body is prepared for the installation of tanks with a capacity of up to **8,000 litres of water** and **500 litres of foam**.

Roof
2000-4000 l/min

Front
250-800 l/min



Pumping flooded areas

Optional high-capacity pumps enable efficient pumping of water from flooded areas, basins, or lagoons.



Decontamination support

KALAN can also be deployed during ecological emergencies, enabling effective pumping and handling of contaminated materials.



FLOODS AND FLOODED AREAS



Smooth land-to-water transition

Intuitive and straightforward controls enable a seamless and effortless transition from land to water.



Deep-water capability

Powered by a high-performance water propulsion system, KALAN can safely traverse large water surfaces and rivers.



www.newspacetechnologies.com



Testing with Rescue Unit
of the Fire Department
of the Czech Republic.

RESCUE AND EVACUATION



Transport of endangered or injured persons

KALAN can carry up to **70 people** or **12 medical stretchers**, making it ideal for the safe evacuation of injured individuals in difficult terrain or flooded areas.



Rooftop cover and handrails

Evacuated or injured persons, together with rescue teams and paramedics, can be protected from external conditions by an optional canvas rooftop. Integrated handrails provide additional safety during transport.



Rescue equipment storage

Optional storage compartments are available for rescue and medical equipment, life vests, or lifeboats.

Evacuation up to 70 injured persons.



NEW SPACE TECHNOLOGIES

Company introduction

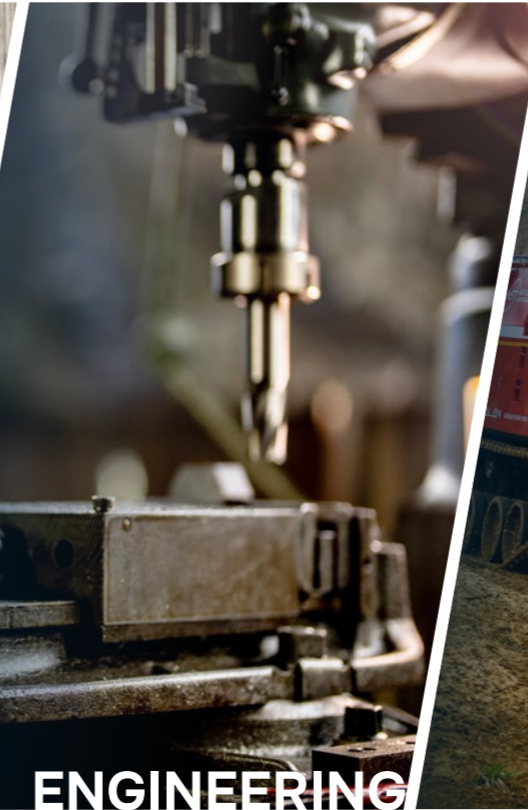
New Space Technologies (NST) is an engineering and manufacturing company delivering mission-critical solutions for governments, rescue services, and defence organizations. We specialize in the custom development, design, and production of military and civilian special vehicles, defence systems, and aerospace applications.

With strong in-house capabilities in structural engineering, advanced simulations, electronics, and manufacturing, NST provides full lifecycle support—from concept and 3D virtual prototyping to prototype and series production.

Close cooperation with end users ensures reliable, field-proven solutions for the most demanding operational environments.

Our expertise:

**Design | Analysis | Electronics
| Manufacturing**





New Space Technologies s.r.o.

Hradistska, 687 08 Buchlovice

Areal Slatina a.s., Turanka 1222/115, 627 00 Brno

Czech Republic



NEW SPACE
TECHNOLOGIES



www.newspacetechnologies.com