



Price excludes upgrade items above standard specification such as feature render and bricks, front entrance timber decking, front entry door, brick infills above garage, external lighting, fencing, concrete paths and driveway. Façade Image may also contain items not supplied by Metricon Homes, namely landscaping and planter boxes.

FIXED PRICE*

\$875,480

Price fixed based on Titled Date of Mar 2026

Perch

Lot 106 Sherwater Boulevard, Clyde North

BOHEMIAN 25

ASPIRE FACADE

BLOCK SIZE: 414m²



4



2



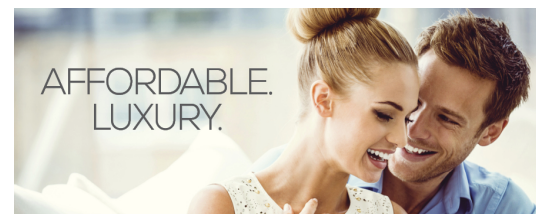
2



FIXED PRICE PACKAGE INCLUDES:

The Bohemian 25 with Aspire facade built to our industry leading base specifications, plus:

- 7 star energy rating
- Fixed site costs (no more to pay)
- 2550mm ceiling height to ground floor
- 2340mm modern feature front door with glazed panel
- Stylish selection of fixtures and fittings
- 20mm premium surface benchtops to kitchen & bathrooms
- 900mm stainless steel appliances
- Brick infills to ground floor windows and doors
- Aluminium double glazed windows
- Window locks to all openable windows
- Garage door remote control
- Lifetime Structural Guarantee#



1300 METRICON
www.metricon.com.au

To find out more, contact
Nicholas Corbett on 0491 946 541

BUILD WITH CONFIDENCE



DESIGNER | **m**
metricon