



perch

NEW STAGE RELEASE

NOW SELLING

WATTLEBIRD



INTRODUCING OUR NEWEST STAGE RELEASE AT PERCH

Proudly presented by Five Squared, Perch is a harmonious blend of nature, wellbeing, and community, offering an exceptional address to call home. This precinct merges natural beauty with a wealth of options for shopping, dining, and outdoor recreation, all complemented by excellent schools and health services, creating a warm and inviting atmosphere.

Your new neighbourhood is situated just across from the upcoming Perch Park, featuring open green spaces, a piazza for social gatherings,

multi-purpose sports courts, ping pong tables, fitness stations, and a skate plaza, enhancing the outdoor experience. Local transport links will whisk you into the CBD, while a short walk takes you to two planned town centres. Construction underway of a government secondary school onsite, and a government primary school and kindergarten in the neighbouring estate, opening from term 1 2026, will add to the already thriving local amenity in Clyde North.

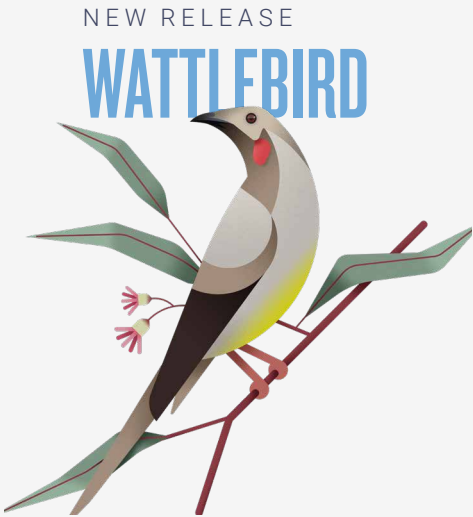


Artist impression of proposed Perch Park

MASTERPLAN

A holistic masterplan considers everything you'll ever need, offering endless options and flexibility to choose the way you want to live. Land sizes are curated for every stage of family life; for new home-owners and budding families, to entertainers and those looking for low maintenance living.





NEW RELEASE
WATTLEBIRD

Striking and distinctive, introducing Wattlebird, our second release of 22 diverse lots with varied frontages and beautiful green outlooks onto Perch Park. Sizes range from a spacious 429sqm block to a lower maintenance 238sqm home site.

Frontages range from 14m to a limited selection at 8.5m, with smaller lots providing an opportunity to own your own piece of land at a more affordable price in a premium release from Five Squared.



DISCOVER EMMA MARIE FASHION EMPORIUM



Since launching in 2007 Emma-Marie has become a well known Melbourne based fashion boutique stocking predominantly Australian designer clothing and fashion accessories.

“Growing up in Berwick we felt there was a real gap for women in the local area to access quality designer labels.

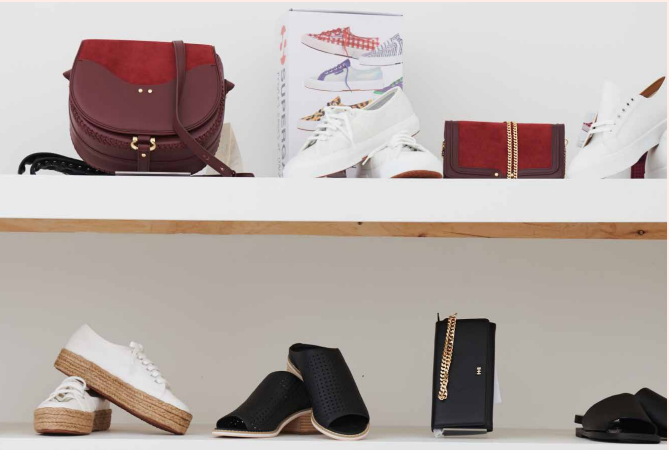
Our philosophy is centered around building long-term relationships with our customers which requires us

to stay completely focused on the quality of our pieces, exceptional service and the highest standard of customer care. We believe every woman has a right to feel good about herself and the confidence a customer gains from wearing a piece that works for them is a big part of that.

We strive to provide a store that caters for all women who love truly beautiful and wearable pieces and

who appreciate speaking with staff that can support and advise them about finding the perfect piece for them.”

Visit Emma Marie at
4/4 Blackburne Square, Berwick VIC 3806
www.emmamarie.com.au



PerchClydeNorth.com.au

WATTLEBIRD

Chris Aabryn 0401 045 883
Ian Harris 0420 533 871

Visit our Sales and Information centre
2 Fenway Boulevard, Clyde North



Disclaimer: Information contained herein is subject to change without notice. No responsibility is accepted by the vendor or its agents for action taken in reliance thereon. Prospective purchasers should make their own enquiries to satisfy themselves on all aspects. Details herein do not constitute any representation by the vendor or the agent and are expressly excluded from any contract. Images are for illustrative purposes only. © Savi Communications 2025.