

CAR PARK AND STORAGE LOTS MAY BE JOINED WITH PRINCIPAL LOTS TO FORM SINGLE LOTS PRIOR TO THE FINAL APPROVAL OF THIS PLAN

PLAN NUMBER
PS933451M

EASEMENT INFORMATION

LEGEND: A - APPURTENANT EASEMENT E - ENCUMBERING EASEMENT R - ENCUMBERING EASEMENT (ROAD)

EASEMENT REFERENCE	PURPOSE	WIDTH (METRES)	ORIGIN	LAND BENEFITED /IN FAVOUR OF
E-1, E-10	CARRIAGEWAY	SEE DIAG.	PS900702Y	LOT A ON PS900702Y
E-2, E-3	DRAINAGE	SEE DIAG.	PS830465Y	CITY OF CASEY
E-3, E-4	SEWERAGE	SEE DIAG.	PS830465Y	SOUTH EAST WATER CORPORATION
E-5	DRAINAGE	SEE DIAG.	PS830466W	CITY OF CASEY
E-6	SEWERAGE	SEE DIAG.	PS830466W	SOUTH EAST WATER CORPORATION
E-8, E-9	SEWERAGE	SEE DIAG.	THIS PLAN	SOUTH EAST WATER CORPORATION
E-7, E-9	DRAINAGE	SEE DIAG.	THIS PLAN	CITY OF CASEY
E-10	SUPPLY OF WATER (UNDERGROUND PIPES)	SEE DIAG.	PS830466W	SOUTH EAST WATER CORPORATION

REF: **22902/3** VERSION: **F** DATE: 07/04/26
22902-3-PS-F.dwg

ORIGINAL SHEET
SIZE A3

SHEET 2

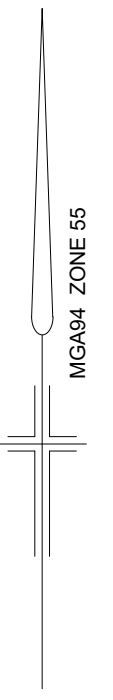
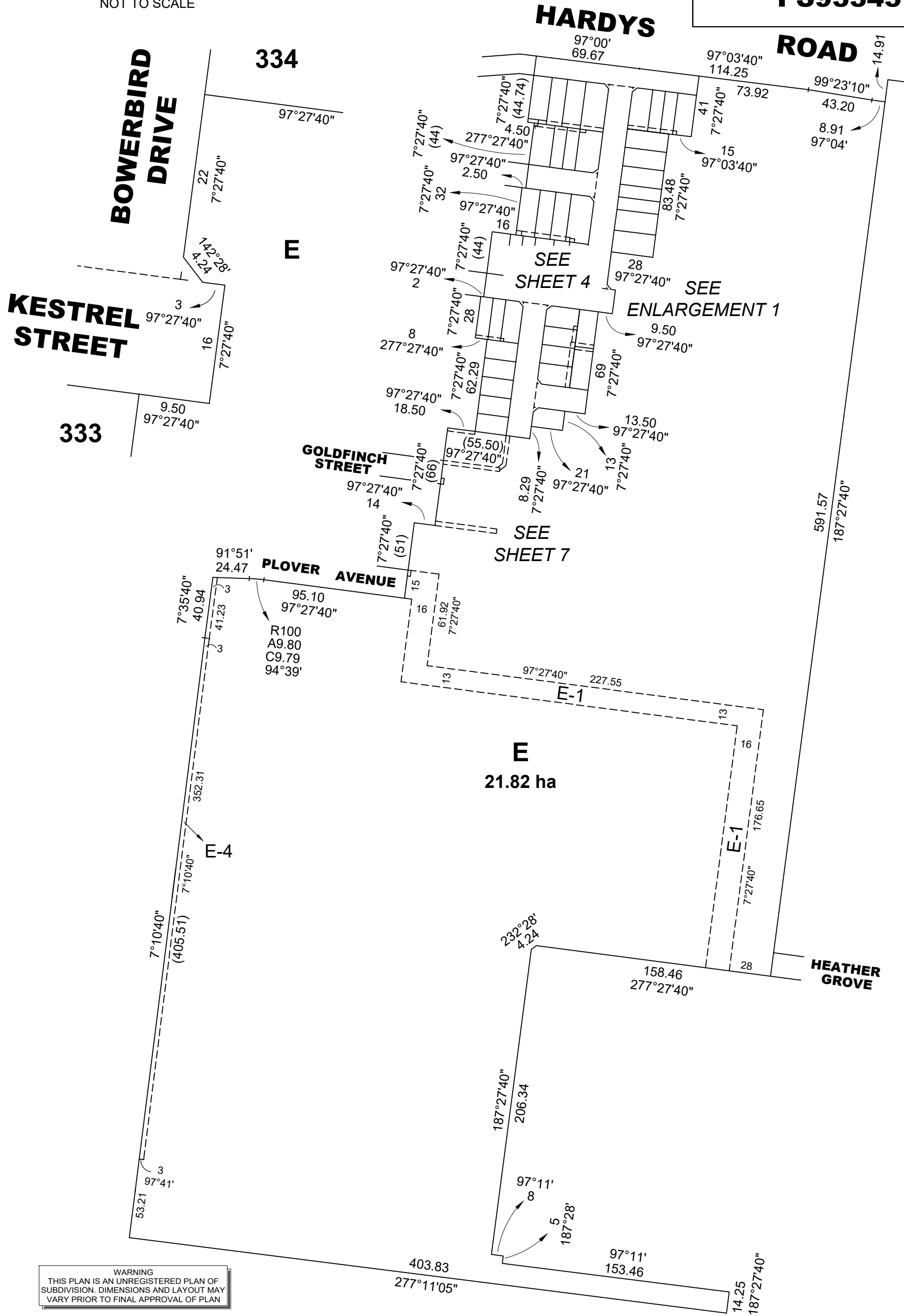


Reeds Consulting Pty Ltd
Lvl 16, 501 Swanston Street
Melbourne Victoria 3000
p (03) 8660 3000
www.reedsconsulting.com.au
survey@reedsconsulting.com.au

LICENSED SURVEYOR
..... THOMAS ANDREW MILLAR

ENLARGEMENT 1
NOT TO SCALE

PLAN NUMBER
PS933451M

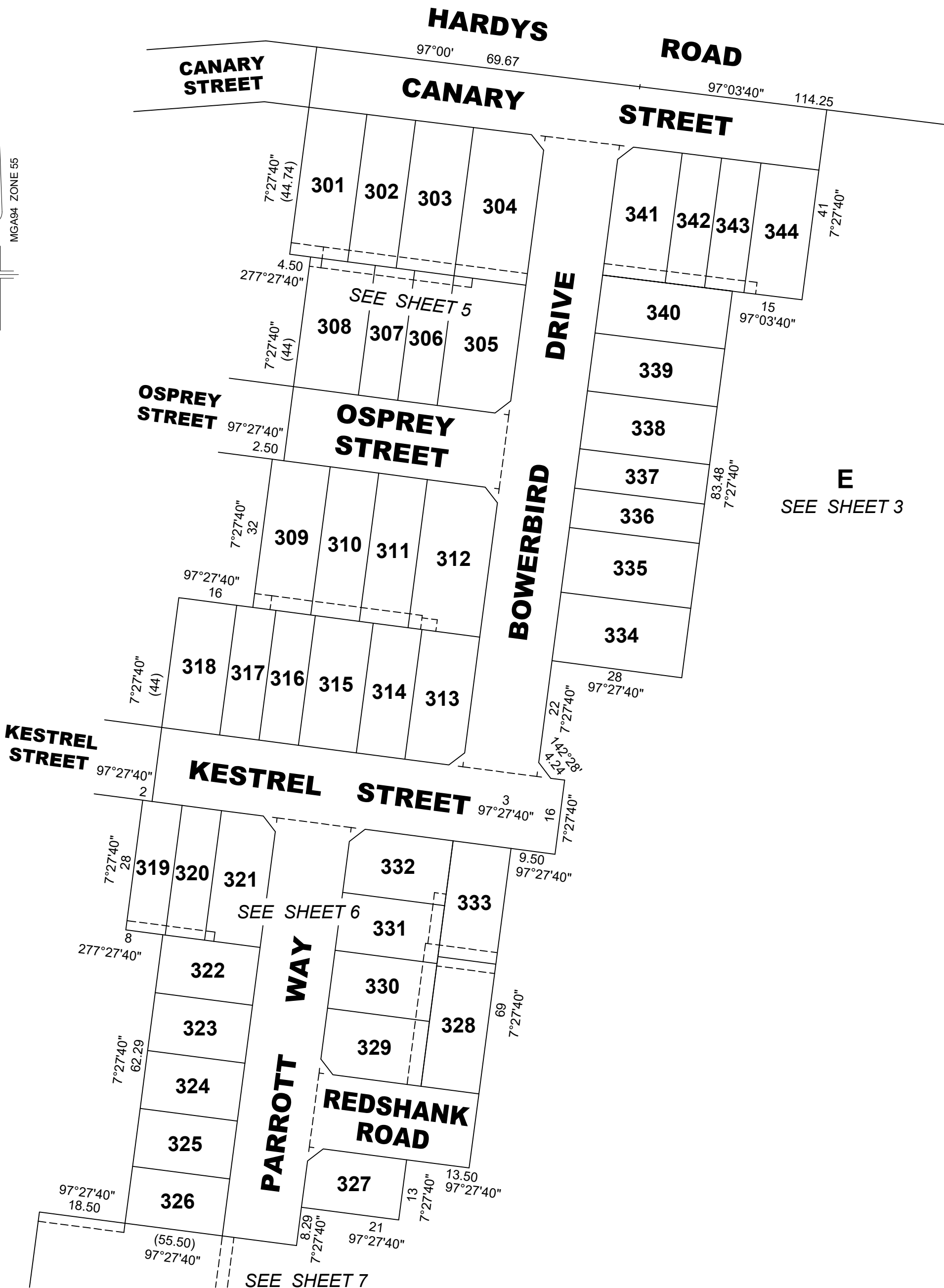
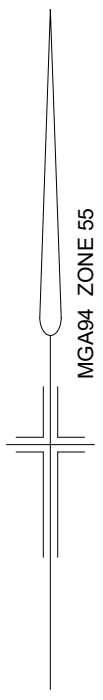


WARNING
THIS PLAN IS AN UNREGISTERED PLAN OF
SUBDIVISION. DIMENSIONS AND LAYOUT MAY
VARY PRIOR TO FINAL APPROVAL OF PLAN

REF: 22902/3	VERSION: F	DATE: 07/04/26 22902-3-PS-F.dwg	SCALE 1:2500	<p>LENGTHS ARE IN METRES</p>	ORIGINAL SHEET SIZE A3	SHEET 3
<p>Reeds Consulting Pty Ltd Lvl 16, 501 Swanston Street Melbourne Victoria 3000 p (03) 8660 3000 www.reedsconsulting.com.au survey@reedsconsulting.com.au</p>			<p>LICENSED SURVEYOR THOMAS ANDREW MILLAR</p>			

WARNING
THIS PLAN IS AN UNREGISTERED PLAN OF
SUBDIVISION. DIMENSIONS AND LAYOUT MAY
VARY PRIOR TO FINAL APPROVAL OF PLAN

PLAN NUMBER
PS933451M



REF:
22902/3

VERSION:
F

DATE: 07/04/26
22902-3-PS-F.dwg

SCALE 1:800
10 0 10 20 30 40
LENGTHS ARE IN METRES

ORIGINAL SHEET
SIZE A3

SHEET 4



Reeds Consulting Pty Ltd
Lvl 16, 501 Swanston Street
Melbourne Victoria 3000
p (03) 8660 3000
www.reedsconsulting.com.au
survey@reedsconsulting.com.au

LICENSED SURVEYOR
..... THOMAS ANDREW MILLAR



WARNING
THIS PLAN IS AN UNREGISTERED PLAN OF
SUBDIVISION. DIMENSIONS AND LAYOUT MAY
VARY PRIOR TO FINAL APPROVAL OF PLAN

REF: **22902/3** VERSION: **F** DATE: 07/04/26
22902-3-PS-F.dwg



Reeds Consulting Pty Ltd
Lvl 16, 501 Swanston Street
Melbourne Victoria 3000
p (03) 8660 3000
www.reedsconsulting.com.au
survey@reedsconsulting.com.au

SCALE 1:500 10 0 10 20
LENGTHS ARE IN METRES

LICENSED SURVEYOR
..... THOMAS ANDREW MILLAR

ORIGINAL SHEET
SIZE A3

SHEET 5

SEE SHEET 5

PLAN NUMBER
PS933451M

OSPREY STREET

R-1
2198m²

336

309
400m²

310
336m²

311
336m²

312
491m²

335
392m²

334
417m²

318
350m²

317
238m²

316
238m²

315
350m²

314
294m²

313
345m²

KESTREL STREET

KESTREL STREET

BOWERBIRD DRIVE

WAY

PARROTT

REDSHANK ROAD

E
SEE SHEET 3

SEE SHEET 7

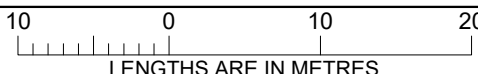
WARNING
THIS PLAN IS AN UNREGISTERED PLAN OF
SUBDIVISION. DIMENSIONS AND LAYOUT MAY
VARY PRIOR TO FINAL APPROVAL OF PLAN

REF:
22902/3

VERSION:
F

DATE: 07/04/26
22902-3-PS-F.dwg

SCALE
1:500



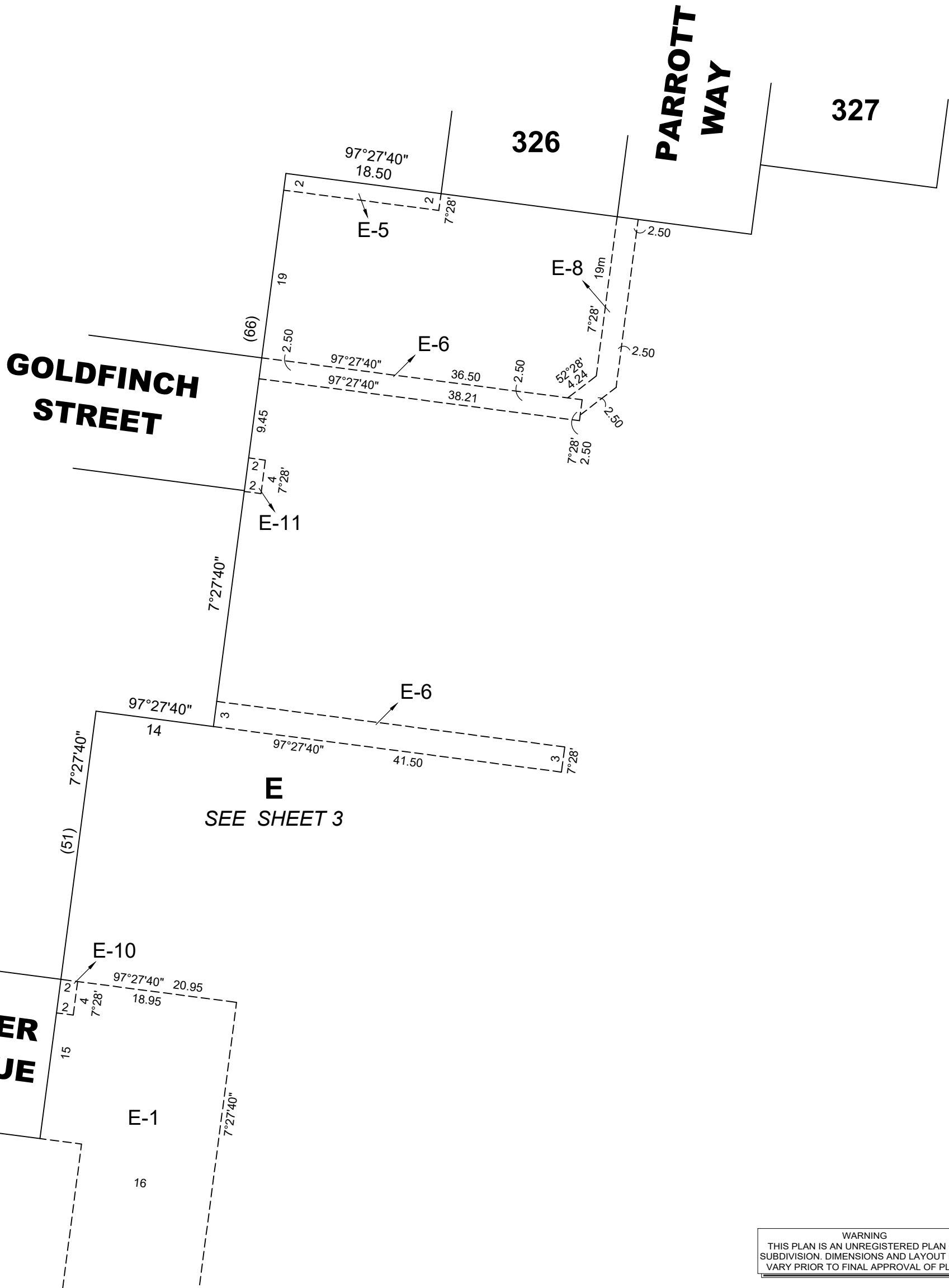
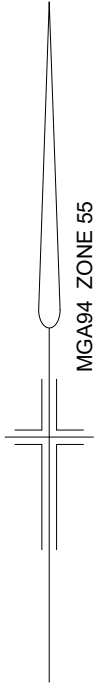
ORIGINAL SHEET
SIZE A3

SHEET 6

REEDS
CONSULTING

Reeds Consulting Pty Ltd
Lvl 16, 501 Swanston Street
Melbourne Victoria 3000
p (03) 8660 3000
www.reedsconsulting.com.au
survey@reedsconsulting.com.au

LICENSED SURVEYOR
..... THOMAS ANDREW MILLAR



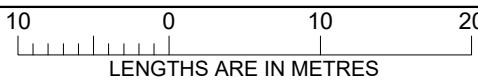
WARNING
THIS PLAN IS AN UNREGISTERED PLAN OF
SUBDIVISION. DIMENSIONS AND LAYOUT MAY
VARY PRIOR TO FINAL APPROVAL OF PLAN

REF:
22902/3

VERSION:
F

DATE: 07/04/26
22902-3-PS-F.dwg

SCALE
1:500



ORIGINAL SHEET
SIZE A3

SHEET 7

REEDS
CONSULTING

Reeds Consulting Pty Ltd
Lvl 16, 501 Swanston Street
Melbourne Victoria 3000
p (03) 8660 3000
www.reedsconsulting.com.au
survey@reedsconsulting.com.au

LICENSED SURVEYOR
..... THOMAS ANDREW MILLAR