

JAN  
KATH





# “I WANT TO CREATE THE ANTIQUES OF TOMORROW...”

...is the declared goal of Jan Kath. The German-born designer is internationally recognized for his trendsetting carpet designs. He fearlessly combines classic elements with minimalist design, radically breaking old visual rules, and has revolutionized the world of carpets. His collections have won awards, such as the Red Dot and the Carpet Design Award and have long been featured in renowned museums. The “Rug Bombs” series was first displayed at Documenta 15 in Kassel, then traveled to the Bangkok Art Biennale in Thailand and finally to the Museum Rijswijk in the Netherlands and in 2026 to Museum Angewandte Kunst in Frankfurt.

Jan Kath has a deep, emotional connection to traditional craftsmanship. “I essentially grew up on rugs,” he says. His grandfather traded in high-quality carpets; later, his father, Martin Kath, took him on buying trips to the vibrant markets and bazaars of Tehran, Istanbul, and Tabriz. “This sharpened

my eye and developed my basic understanding of color combinations and proportions.” However, the transition from trading to creating was not planned. On the contrary, in his early twenties, Jan Kath packed his backpack and embarked on a road trip through India to find his “own way”. After a year of traveling, he ended up in Kathmandu, where he coincidentally ran into an old business associate of his father’s on the street. A meeting that changed everything – the connection to carpets was reestablished.

Instead of returning home, Jan Kath took a job as a quality inspector in Nepal, gaining further experiences in the industry. A few years later, he took over the manufacturing himself and began to design his own creations. “It was not an easy learning process. Far from everything that looks good on paper works in textiles. But when I decided to trust my own ideas and implement them consistently, success followed.”







TABRIZ CANAL AERIAL  
*navy blue / dirty white*



AZER PULSE 64 SKY  
*burgundy, dark blue / gold*



RIOT  
*aqua*



KHILA BUTA SIDEKICK  
*brown, green*



YU ELSWICK KLECKS  
*beige, black-silk*



YOU WIN  
*turquoise / yellow*



BIDJAR VENETTA  
*purple / light purple*



DRESS 6  
*dark blue*



FERRARA RADI ROCKED  
*radi light / rubia*



DOTO  
*gold / beige / blue*



KARABAKH GARDEN CROCO  
*beige*



BORO 1  
*red*



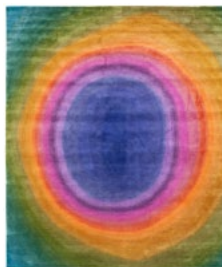
DAWN  
*beige / gold*



CLOUD 1  
*blue*



JARDIN DE PARIS BLOTTED  
*orange, red*



ODDA  
*green / orange / purple*



BIDJAR KINGSCROSS BUZZ  
*green / neon pink*



YANTRA 8 BORDER  
*pink / dark blue*



ALTA TURN AGRA ARCHWAY  
*turquoise / yellow*





## REGARDING QUALITY- UNCONDITIONALLY TRADITIONAL

From Vienna to London, Paris, Milan, extending to Kuwait, Beirut, Beijing and Sydney, Jan Kath carpets are now sold worldwide. With exclusive showrooms in Berlin, Cologne, New York, and Vancouver. His clientele includes numerous rock stars, authors, monarchs and Hollywood actors. Jan Kath also outfits boutiques of major Italian and French fashion houses such as Fendi and Saint Laurent across the globe. However, Jan Kath is convinced that the secret to his success lies not only in the design. "It's the craftsmanship that elevates the design, transforming a successful template into something extraordinary," he says. "That's why it's important to me to promote old traditions and contribute to keeping this cultural heritage alive." When it comes to quality, the designer describes himself as "uncompromisingly conservative."

Employing methods that have hardly changed over the centuries, Jan Kath carpets are hand-knotted, knot by knot, in small workshops primarily in Kathmandu

(Nepal), Agra (India), and the High Atlas Mountains (Morocco). Partly due to his personal history, he feels a close connection with the people in the carpet-producing countries. "The Asian continent has profoundly influenced me," says Kath. "I have been at home in northern Thailand and Kathmandu for many years now."

For this reason, Jan Kath regards good working conditions as more than a moral obligation they are an absolute necessity. The entire carpet supply chain is monitored by the Swiss fair-trade organization, Label STEP. Independent staff regularly visit the workshops to check working conditions and environmental standards on-site. "In my view, both are essential for the future of our small family business," says Kath. "Because only if we keep carpet knotting attractive as a profession we will have the best employees in the coming years. And we need them, as my designs are incredibly complex and their realization requires a lot of know-how and great passion."

# HIGHLAND WOOL FOR A GOOD INDOOR CLIMATE

It's not just the individual handwork that makes each carpet unique. The hidden gem of Jan Kath's designs is the wool, particularly the Tibetan highland wool. This wool is among the most valuable and robust in the world. The sheep in the Himalayas are exposed to harsh climatic conditions at high altitudes, resulting in their fleece developing a very high fat content (lanolin) and being particularly long-fibered and elastic, providing the carpets with a natural protection against dirt. Healthy wool lives and breathes; storing moisture and releasing it in dry indoor air, creating a balance. This makes a wool carpet antistatic and promotes a comfortable indoor climate.

To preserve and enhance the uniqueness of the wool, Jan Kath has the raw material combed and spun by hand. This process keeps the material coarser and its surface more irregular, leading to the varying absorption of dye pigments. When this particularly vibrant wool is then knotted, it results in color variations, known as "Abrash" – a special quality criterion of handmade carpets. The finest Chinese silk adds charming light reflections to the textiles.

This natural "endless fiber" is manually unwound from cocoons and then twisted. Although it is possible to produce any Jan Kath design entirely in silk, resulting in an elegant, lustrous and even carpet, the patterns become very intriguing when there is a deliberate combination of materials.

These include, besides Chinese silk and Tibetan highland wool, the Nepalese nettle. "Allo" is a very special natural product resulting in an expressive depth and a robust feel. The Allo-Susni plant grows in the Himalayas at altitudes between 900 and 2,500 meters, often in hard-to-reach areas. Local mountain farmers harvest the plants and bring them to their villages to dry. A few days later, the bark is stripped from the stems and boiled in an ash wood barrel. After two to three hours in water, the fiber is beaten with a wooden hammer, loosened and then laid out to dry in the sun. To achieve a special bright shine, the nettle is then again immersed in a mixture of water and white clay, cleaned by hand. Once the fibers have softened, they are spun into a coarse yarn.





# PRODUCT UNDERSTANDING



RIOT  
*rust*



FERRARA  
*white / gray*



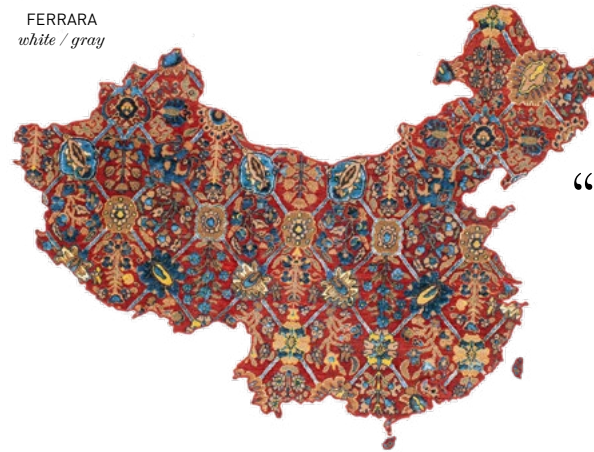
NESO  
*blue / gray / green*



BORO 20  
*dark blue / yellow*



ALTA TURN BASIC  
*turquoise / yellow*



TABRIZ CANAL CHINA  
*red*

“DESIGN  
IN  
MANY  
FORMS”



LUCKY CAT  
*blue*



COARSE CANVAS  
*brown*



SERAPI QUEENSBURY SKY  
*yellow*

ENDLESS SHAPES,  
SIZES & COLOR  
CUSTOMIZATION



DRESS 4  
*beige / gray*





ERASED ARTWORK





## THE APPEAL OF IMPERFECTION

Together with his son Sanchir, Jan Kath has opened a new chapter in the iconic Erased series: ERASED ARTWORK is a tribute to tradition, the sensual experience of textile art—and at the same time a radical play with deconstruction.

In the creative process, an abstract and an ornamental pattern merge. This motif is then further alienated, superimposed, blurred. What remains are delicate hints, fragile surfaces, shimmering layers of color – like memories that slowly fade from the mind but retain their emotional power.

But the erosion does not only take place on a visual level. The idea of controlled decay can also be experienced haptically. After each carpet has been hand-knotted in the factories in Agra, India, it undergoes an “antique finishing” process developed especially for Jan Kath. Over several weeks, the fibers made of highland wool and silk are deliberately treated with fire and water. In this process, perfection is dissolved and the material is given the aura of a life already lived. The result is a carpet that does not look new, but feels new: rich in depth, emotion, and history.



JOSEPHINE ELSWICK  
*blue / beige*



CHENONCEAU ELSWICK  
*mustard / green*



JOSEPHINE GARSTANG  
*blue / beige*



VICTORIA ELSWICK  
*blue / orange*





CYPRINUS



DOTO





## SHAPED BY THE OCEAN

The rugs from the CYPRINUS collection transport you to the magical world of the oceans. Inspired by the flowing movements and shimmering reflections beneath the surface of the water, iridescent colors and gentle transitions merge into a design that radiates serenity and calmness.

The collection, which Jan Kath designed together with his son Sanchir, is hand-knotted in Nepal, knot by knot, over a period of several months. The use of Tibetan highland wool, Nepalese nettle and the finest Chinese silk gives the pieces an incomparable texture and a subtle sheen that emphasizes the depth of the design.

CYPRINUS rugs are not just floor coverings, but transformative works of art that turn any room into an oasis of calm. Each piece is made to order - in individual sizes and color nuances to suit your needs and desires.

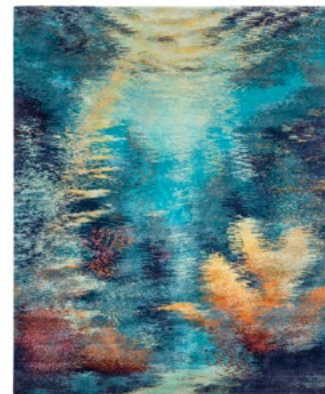
In 2025/2026 the design DOTO won the Red Dot Design Award, the WALLPAPER\* Design Award and the German Design Award.



IONE



NESO



SAO



THOE





GOL NURA 2

# GOL NURA







## WHEN THE DESERT COMES TO LIFE

It is a rare, almost magical moment: after an unexpected rainfall, the barren desert comes to life. Colors burst through the dusty soil, delicate flowers open as if to shatter the silence – cheerful, vibrant, present, yet never intrusive. This natural spectacle forms the starting point for GOL NURA by Jan Kath.

GOL NURA captures the beauty of plants that have learned to survive in extreme conditions, with calm, earthy tones forming the backdrop. The technical implementation is impressive: the carpets are made using two knotting techniques, the classic Tibetan knot, known for its open, airy structure, and a flatweave technique called Sumak.

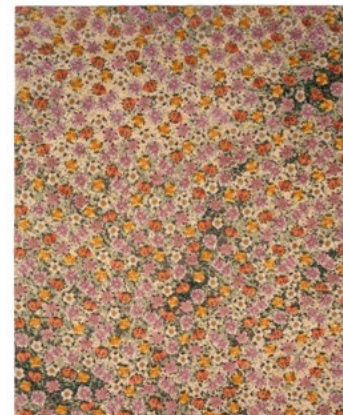
The interplay of both techniques creates a striking high-low effect that models the floral motifs. The surface gains depth and a tactile quality that further emphasizes the theme of resilient desert flora.



GOL NURA 4P  
*red*



GOL NURA 4  
*yellow*



GOL NURA 3  
*yellow*



GOL NURA 4P  
*brown*





SPICED CHECKERBOARD  
*Avio / blue pink*



MAURO & SPICE





### STRUCTURE AND DEPTH

With CHECKERBOARD, Jan Kath reinterprets a familiar motif. The geometric grid lends the carpet rhythm, order, and a clear structure, allowing the design to integrate effortlessly into a wide range of interiors. A subtle color gradient flows naturally across the surface, giving the pattern depth and vibrancy without dominating the space.

CHECKERBOARD is part of the MAURO AND SPICE collection. All carpets are crafted from two natural materials sourced from the Himalayas: hand-combed and hand-spun highland wool, and an exceptionally fine yarn made from the Allo Sisnu plant – a wild nettle species. Produced through meticulous handcraft, this fiber is distinguished by its soft, silky sheen and a pleasantly robust texture.

The organic character of the rugs is the result of the highest level of craftsmanship. Each of the approximately 100 knots per square inch is precisely defined in the design template and carefully executed in Nepalese workshops. In addition to the colored version, the carpets are also available in a natural variant, made exclusively from untreated nettle fiber in warm brown and beige tones, complemented by silk.



MAURO CHECKERBOARD DELUXE  
*gray*





SPICE 2  
*beige*



SPICE 2 ODDA  
*pink yellow*



SPICED CHECKERBOARD  
*Senja / blue green*



SPICE 2 LEVICO  
*turquoise*



SPICED CHECKERBOARD  
*Narvic / blue beige*

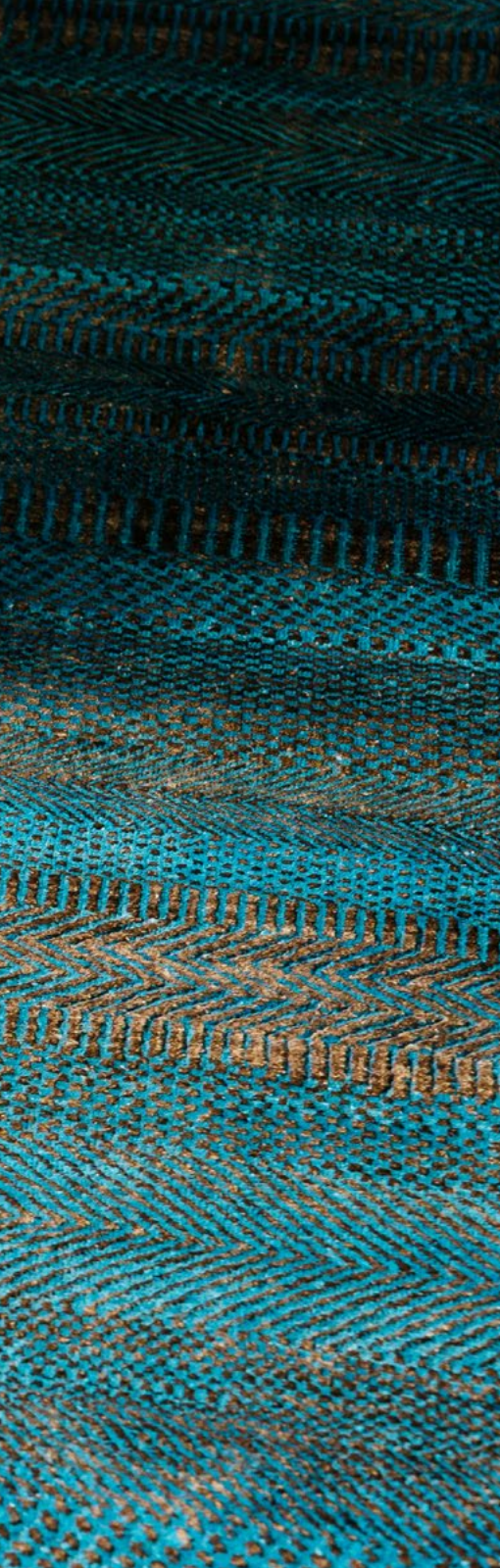


# GRASS



GRASS  
*turquoise, copper*





## ROOTED IN THE RURAL

With their patterns and motifs, carpets often reflect the lives and ideas of the people who weave them—and who live with them. The designs for the GRASS collection originate in the rural regions of Turkey.

There, the weavers draw inspiration directly from their surroundings: cows, trees, farms and the quiet rhythms of life in the countryside. They work without predefined design templates, relying instead on imagination and intuition, guided by deep trust in their own craftsmanship.

The vast landscapes of Anatolia frequently form the backdrop for these rural farming concepts. Broad, horizontal lines evoke grasslands and grain fields stretching across the horizon. For his GRASS collection, Jan Kath builds on this very idea, transforming it into a contemporary, rhythmic pattern.

Produced in several base colors, the rugs integrate effortlessly into modern interiors. At the same time, they convey the vitality and rustic character of nature—which, through the deliberate interplay of handspun wool and the finest silk, becomes tangibly present in both texture and feel.



GRASS  
*turquoise, dark gray*



GRASS  
*red*



GRASS  
*sea green, copper*



GRASS  
*pink, copper*





“OUR MISSION IS TO KEEP  
A CENTURY OLD  
HANDCRAFT ALIVE...”

JAN KATH DESIGN GMBH HEADQUARTERS  
JAN KATH SHOWROOM BOCHUM GERMANY

FRIEDERIKASTRASSE 148  
44789 BOCHUM  
GERMANY  
T: +49 (0) 234 94 123 44

INFO@JAN-KATH.COM

**PRESS CONTACT**  
GABY HERZOG  
GABYHERZOG@JAN-KATH.COM

**INFO & PHOTO-DOWNLOAD**  
WWW.JAN-KATH.COM

FOLLOW US ON INSTAGRAM