

TRIBÙ

TRACES OF LIGHT

revealing outdoor living in its most natural rhythm

TRIBÙ

Rope becomes architecture. Light becomes material.
Shadows trace the passage of time while elements
appear naturally.

SUMMARY	5
TRACES OF LIGHT INSTALLATION	6
NAGOMI BY INODA+SVEJE	7
VIS À VIS BY PIERGIORGIO CAZZANIGA & TRIBÙ STUDIO	15
TRIBÙ & DESIGNERS	23
PRESS IMAGES	27
PRESS CONTACT	29

TRIBÙ

SUMMARY

SUMMARY



At 3daysofdesign in Copenhagen, Tribù presents Traces of Light, an immersive outdoor installation at the historic Odd Fellow Palace where light, rope and architecture shape space over time. Within this atmosphere, Nagomi by Inoda+Sveje translates woven structure into calm, suspended lightness, bringing a distinctly human, organic sensibility to the installation. Vis À Vis adds grounded modular clarity through teak and soft architectural form. Together they explore outdoor living as a balance between light, material and space.

Traces of light, revealing outdoor living in its most natural rhythm

At 3daysofdesign in Copenhagen, Tribù presents Traces of Light, an immersive outdoor installation at the historic Odd Fellow Palace. Here, light, rope and form come together to shape space through atmosphere. Step in, and the light feels different immediately. Softer. Slower. Ropes stretch as a quiet structure that changes how you feel the space. Light moves as the day unfolds. And as you walk, shadows shift with you. Light, material and time are in constant conversation. Comfort becomes dynamic here.

Within this atmosphere, two collections appear.

Nagomi by Inoda+Sveje feels naturally part of the installation. Designed by the Japanese-Danish duo, the collection translates the lightness of weaving into furniture.

Its handwoven surfaces and slim aluminium frame interact gently with the shifting light, creating a subtle play of shadow, texture and transparency. Vis À Vis by Piergiorgio Cazzaniga feels more structured, more architectural. Its modular sofa organizes the space. It creates atmosphere through proportion, architectural rhythm and quiet geometry.

Between these two worlds, the installation breathes.

Traces of Light reflects Tribù's ongoing exploration of outdoor living as a refined balance between nature, material and human presence. The historic location enhances the experience, grounding it in a sense of heritage and timelessness within the heart of Copenhagen.

TRIBÙ

NAGOMI COLLECTION

by Inoda+Sveje



Nagomi collection,
a woven harmony of Japanese and Danish design





Nagomi by Inoda+Sveje, a woven harmony of Japanese and Danish design

Within Traces of Light, Nagomi feels like it naturally belongs to the installation. Designed by the Japanese-Danish duo Inoda+Sveje, the collection combines the softness and balance of Japanese aesthetics and the calm clarity of Scandinavian design. Nagomi extends Inoda+Sveje's ongoing search for organic minimalism and quietly dynamic comfort.

The name Nagomi means harmony and balance. You feel it in the way the pieces sit in the space. Soft in contour, simple in form, easy in proportions. Designed around comfort and natural movement, everything feels relaxed, almost at rest.

Nagomi stands out for its exceptional comfort. Seat cushions add an extra layer of softness, yet the collection is comfortable without them. At the heart of Nagomi lies the lightness of its weaving.

The handwoven hemp-based Canax® surfaces are supportive, flexible and naturally ergonomic. Sitting becomes a tactile experience in both ways.

The collection creates a subtle interplay with light. As daylight moves through the weaving, it catches the subtle glimmers of the slim cast aluminium frame in Dark Bronze differently from every angle. This way, the material never feels fixed. It changes with the light, moment by moment. The result is an exceptionally open and tactile presence.

Nagomi combines refined craftsmanship with durability and material warmth. Within the atmosphere of Traces of Light, the collection almost seems to dissolve into its surroundings, calm, airy and quietly connected to the architecture around it.

Inoda+Sveje on Nagomi's design vision

“Central to Nagomi is organic minimalism, avoiding straight lines and drawing inspiration from nature. We focus on a human-centered approach, combining visual appeal and tactile richness with natural comfort. Nagomi is not just designed for the eye, but for the body.”

NAGOMI



armchair



lounge chair



bench

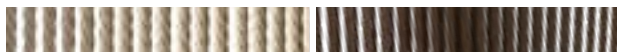
FINISH FRAME



10-Linen

65-Dark Bronze

FINISH WEAVE



10-Linen

80-Copper

NAGOMI



dining table 320 cm / 126"



dining table 240 cm / 94.5"

FINISH FRAME

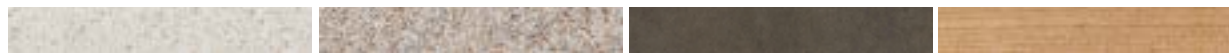


10-Linen

65-Dark Bronze

89-Wengé

FINISH TABLE TOP



C15-Sabbia

C80-Scisto

C86-Pompei

T-Teak

TRIBÙ

VIS À VIS MODULAR SOFA

by Piergiorgio Cazzaniga & Tribù Studio



Vis À Vis modular sofa,
a grounded expression of openness and flow







Vis À Vis modular sofa, reconfigured for evolving outdoor living

Within Traces of Light, Vis À Vis brings a grounded sense of calm to the installation. Crafted in warm plantation teak, the reimagined collection feels open, soft and architectural at the same time.

The 2026 edition evolves through subtle refinements and softer silhouettes. The sofa's low teak platform supports generous cushions, free from visible structural interruption. The result is an open lounge composition with an almost floating appearance. It draws you in naturally: easy, relaxed, made for slowing down and staying in the moment.

A new organic corner module allows more fluid arrangements that move naturally through the space. Discreet piping details bring a quiet rhythm to the soft volumes, while travertine and teak low tables add warmth and tactility to the setting.

Architectural in its simplicity yet soft in presence, Vis À Vis gently structures the space around it. As daylight moves through the installation, shadows stretch across the surfaces and proportions continuously change. The collection lives with the atmosphere around it, revealing outdoor living as an evolving experience.

Piergiorgio Cazzaniga on Vis À Vis' design vision

“True luxury lies in the details. The technical and aesthetic nuances of the reimagined Vis À Vis collection show how subtle design gestures shape an atmosphere of calm, beauty and comfort.”

VIS À VIS MODULAR SOFA



organic sofa with teak frame and travertine or teak sidetable

FINISH FRAME



T-Teak

FINISH SIDETABLE



T-Teak



TV-Travertine

TRIBÙ

TRIBÙ & DESIGNERS



Tribù

Since 1966, Belgian design house Tribù has grown from a family tradition into a global presence, always guided by the care for quality, comfort, and craftsmanship it all started with. Early on, Tribù revealed teak as more than strong, introducing elegance and warmth to outdoor spaces. That same vision shapes every design today. Collections are crafted to be combined and layered, letting spaces evolve naturally. Behind the calm aesthetics lies a pursuit for performance. Materials are chosen for the way they age, fabrics are carefully developed to endure, and advanced techniques ensure comfort that lasts, season after season. Today, Tribù is present in around 90 countries and works closely with renowned designers and high-end hospitality partners. From its headquarters in Belgium to its flagship showrooms in Los Angeles and Milano, Tribù continues to create outdoor spaces that feel connected to nature, to the moment, and the people who share them.



Inoda+Sveje

Inoda+Sveje are an architect and designer duo based in Milan. Kyoko Inoda (Japan) and Nils Sveje (Denmark) founded their design studio in 2000 with a shared passion for the art of furniture making.

Known for their harmonious approach, they combine craftsmanship with innovation, creating designs that are both intuitive and timeless. Their work spans a wide range of projects, from collaborations with international design houses such as Minotti to artisan furniture crafted for Japanese workshops, always with a focus on detail and functionality.

Through their collaboration with Tribù, Inoda+Sveje have reimagined outdoor furniture, blending natural forms with the precision of modern materials. Their design philosophy elevates every piece to embody not only beauty but a lasting connection to both nature and a tactile experience.



Piergiorgio Cazzaniga

Piergiorgio Cazzaniga grew up in the Italian town of Lissone. Born as a son of a carpenter, he spent his childhood in his father's workshop. From an early age, he developed a deep understanding of materials, construction techniques and the dialogue between form and function. Foundations that would shape his entire design philosophy.

Known for his understated aesthetic and technical precision, his work is characterised by pure lines, essential forms and a continuous search for innovation. He always strives to achieve maximum comfort and functionality with minimal visual impact. For Tribù, Cazzaniga designed CTR and Vis À Vis. Both collections express a sophisticated balance between architectural purity, comfort and craftsmanship. Their elegant proportions and restrained detailing embody a shared vision of outdoor living.

TRIBÙ

PRESS IMAGES



product images



ambience images

A selection of high-resolution images is available upon request.
Please contact Sara Ceysens at press@tribu.com.

TRIBÙ

PRESS CONTACT

Framing exhibition

Odd Fellow Palace
Bredgade 28, 1260 Copenhagen

10–12 June 2026

10:00 – 18:00

Press contact

For all press inquiries, please contact Sara Ceysens at press@tribu.com.

Press contact on site

For press appointments during 3daysofdesign, please ask for Khadidja Thys, CSO Tribù.

TRIBÙ HEADQUARTERS

Customer service
Oude Heidestraat 72
3740 Bilzen-Hoeselt
Belgium

TRIBÙ AMERICA

1910 North Josey Lane
Carrollton, TX 75006
United States

TRIBÙ FLAGSHIP MILANO

Via Felice Cavallotti 13
Durini Design District
20122 Milano
Italy

TRIBÙ FLAGSHIP L.A.

8935 Beverly Boulevard
West Hollywood 90048
Los Angeles
United States

TRIBÙ