

# GROUPED

AHARE  
Bundle Studio  
CL Design Works  
Salme Linen  
SF-SO  
SOTANAKA  
Ødeland  
2050 Furniture

Press release  
June 1, 2026

**3**days**of**design  
**inter.agcy**



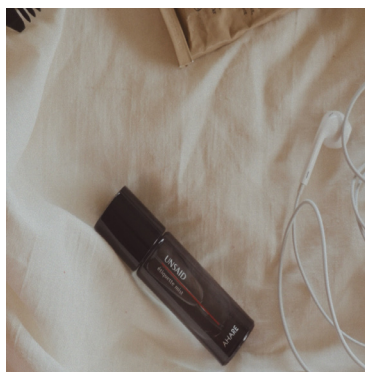
For the first time, inter.agcy and 3daysofdesign present **GROUPED**—a new curated showroom concept and exhibition in the latest Design District, Islands Brygge.

GROUPED focuses on the practices of AHARE, Bundle Studio, CL Design Works, Salme Linen, SF-SO, SOTANAKA, Ødeland and 2050 Furniture. Working with varying intentions and practices, this selected group of designers are united through their keen attention to detail, rigorous design processes, and a shared interest in materiality.

GROUPED takes place in a vibrant courtyard with a rich, industrial history. Hidden in a elegantly renovated space, the juxtaposition between rough exteriors and refined interiors is echoed throughout the space, exhibition design and exhibitors.

*“for GROUPED, we are creating visual lines and transitions between each curation - balancing the feeling of a showroom with the atmosphere of an exhibition format. each designer will be presented within an installation composed of custom mirror sculptures and concrete elements, creating individual spatial moments throughout the space designed by inter.agcy”*

- Kristian Kirk, Creative Director, inter.agcy



#### **AHARE**

AHARE presents *Étiquette Mist*, a fragrance object designed as an etiquette for self-care, will be presented. Rather than wearing scent on the skin as adornment, it proposes a quiet ritual for reconnecting with oneself through breathing, air, and sensory awareness. It is a small architecture of scent for everyday life.



#### **Bundle Studio**

Bundle Studio presents *Bale*, a project exploring form pressed natural fibre composites. Developed through material experiments and large-scale prototyping, the project investigates how bio-based materials can shape both construction and aesthetic.



#### **CL Design Works**

CL Design Works designs and builds contemporary wooden objects with a focus on tactile materiality, refined construction and understated forms. Rooted in an Argentine approach to making, the work combines structural clarity with everyday warmth.



### **Salme Linen**

Founded in Copenhagen, Salme Linen is rooted in a calm and refined universe inspired by classical manor traditions. Crafted in Europe from natural materials, the collection explores texture and weaving through timeless interior textiles with depth and detail.



### **SF-SO**

SF-SO presents two living objects—the Thin Shelf Series and the H Lamp Series—in collaboration with high-precision metal manufacturers in Korea. Visitors can explore the packaging, assembly, and modular systems behind SF-SO's philosophy, "Less Presence, More Purpose".



### **SOTANAKA**

Uneri, a furniture collection by Tokyo-based studio SOTANAKA, gives life to discarded urban tree branches. Built with a self-developed joinery method for each branch's curve, the collection reveals uniquely poetic shapes with structural durability.



### **ØDELAND**

ØDELAND presents an installation of bowls based on an experimental research in the aesthetic qualities of reusing waste. It is a contemporary interpretation of the traditional platter—a hybrid between the functional object and the ceramic artwork.



### **2050 Furniture**

2050 Furniture presents The Sondre chair, a catalyst for systemic change. 2050 Furniture is a new kind of furniture production, transforming wasted wood into design furniture – locally, cooperative and with care for nature, people and the future.