

issues

MANDATORY BULLETIN No. RTC-080a – R1 - SR
SAFETY RELATED

**TECHNICAL CONTENT OF THIS DOCUMENT IS APPROVED
UNDER THE AUTHORITY OF THE DOA REF. EASA.21J.057.**

- 1. CONCERNING TO:** All Sport Star RTC aircraft
- 2. REASON:** Consistently performing a pre-flight inspection in the engine compartment can eliminate the recurring occurrence of cracks in the exhaust system of SportStar RTC aircraft in service.
- 3. REQUIRED ACTIONS:**
1. Check and replace the defective part if necessary.
- Affected Parts: Exhaust muffler having Part Number (P/N) E6 18-10 01 (new version) and related Gas tube parts E6 18-23 01, E6 18-24 01, E6 18-25 01, E6 18-26 01.
- Exhaust muffler having Part P/N 766521 (original version) and related Gas tube parts E6 18-30-01, E6 18-31 01, E6 18-33 01 and E6 18-25 01.
2. Record the replacement in the airframe logbook.
- 4. LATEST DAY OF THE ACTION:** Immediately, during the next pre-flight preparation, then at every 100-hour / annual inspection.
- 5. CARRIED OUT BY:** Aircraft operator/owner.
- 6. COSTS COVERED BY:** In accordance with the manufacturer's warranty conditions. By the aircraft manufacture for recognized claims involving replaced exhaust system parts with operated time of up to 300 hours.
- 7. NECESSARY MATERIAL:** Supplied by the aircraft manufacturer.
- 8. WORK PROCEDURE:** According to this SB.
- 9. APPENDICES:** No attachments.

Valid from: 14.11.2025

1. Work procedure

1.1 Necessary tools

Tools needed: Phillips screwdriver, magnifying glass, mirror and flashlight.

1.2 Necessary material (RTC080a)

Exhaust system parts in case of a defect on the aircraft.

1.3 Work procedure

1.3.1 As part of pre-flight preparation, dismantle the upper and lower engine cowlings according to MM Sport Star RTC Chapter 71, paragraph 71-10.

1.3.2 Inspect the entire exhaust system, focusing on the formation of cracks on the individual exhaust manifolds, the outer surface of the muffler and the exhaust outlet pipe – see Fig.1.

Next, inspect the exhaust mounting brackets and brackets – see Fig.1.

When inspecting, use a flashlight, magnifying glass, or a mirror in inaccessible places as needed.

If damage is found to any part of the exhaust system, immediately inform the aircraft manufacturer and replace the defective part of the exhaust system.

1.3.3 When replacing a defective part of the exhaust system, follow the instructions in MM Sport Star RTC, Chapter 78, paragraph 78-20.

1.3.4 Install the lower and upper engine covers according to MM SportStar RTC Chapter 71, Paragraph 71-10.

1.3.5 The requirement to implement this bulletin is not required if the installed or replaced exhaust system specified in Section 3. Measures of this bulletin for:

- Muffler
 - E6 18-10 01 index C or higher
- Exhaust manifolds
 - E6 18-23 01 index C or higher
 - E6 18-24 01 index C or higher
 - E6 18-25 01 index B or higher
 - E6 18-26 01 index B or higher

2. Influence on airplane documentation

2.1 Accompanying technical documentation

Without influence.

2.2 Operation technical documentation

2.2.1 Pre-flight log:

Confirm in the pre-flight log that the aircraft exhaust system has been inspected as part of the pre-flight preparation.

2.2.2 Maintenance certificate (100hrs/annual inspection):

Write a note in the 100hrs/annual inspection certificate that the exhaust system has been inspected.

3. Influence on weight and balancing

Without influence.

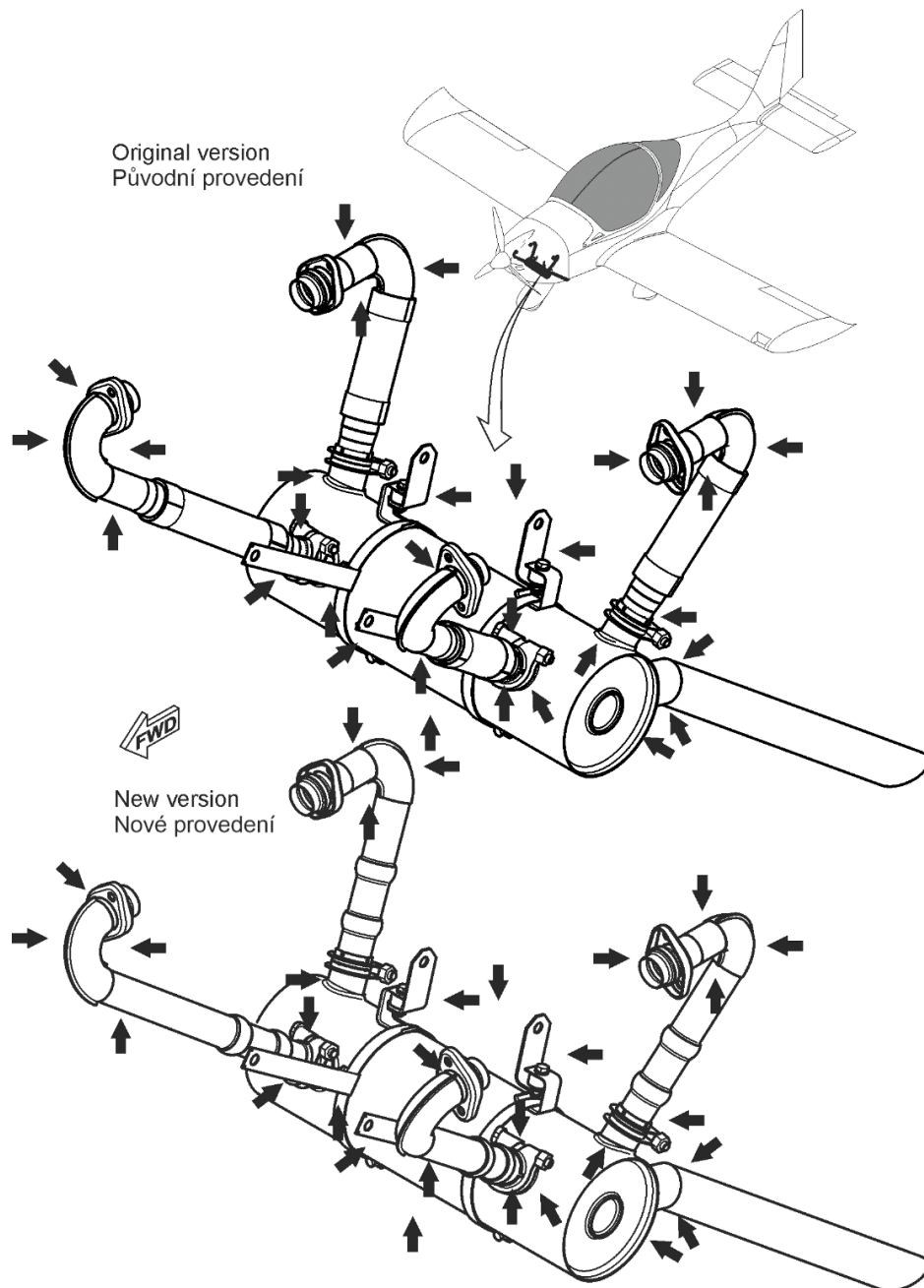


Fig. 1 Checked exhaust system locations.

- a) Cracks in exhaust elbows
- b) Cracks in exhaust manifolds to muffler
- c) Cracks in muffler manifold inlets
- d) Cracks in muffler cylindrical casing and side circular walls
- e) Cracks in muffler exhaust outlet pipe
- f) Cracks in exhaust brackets and brackets (front and rear)