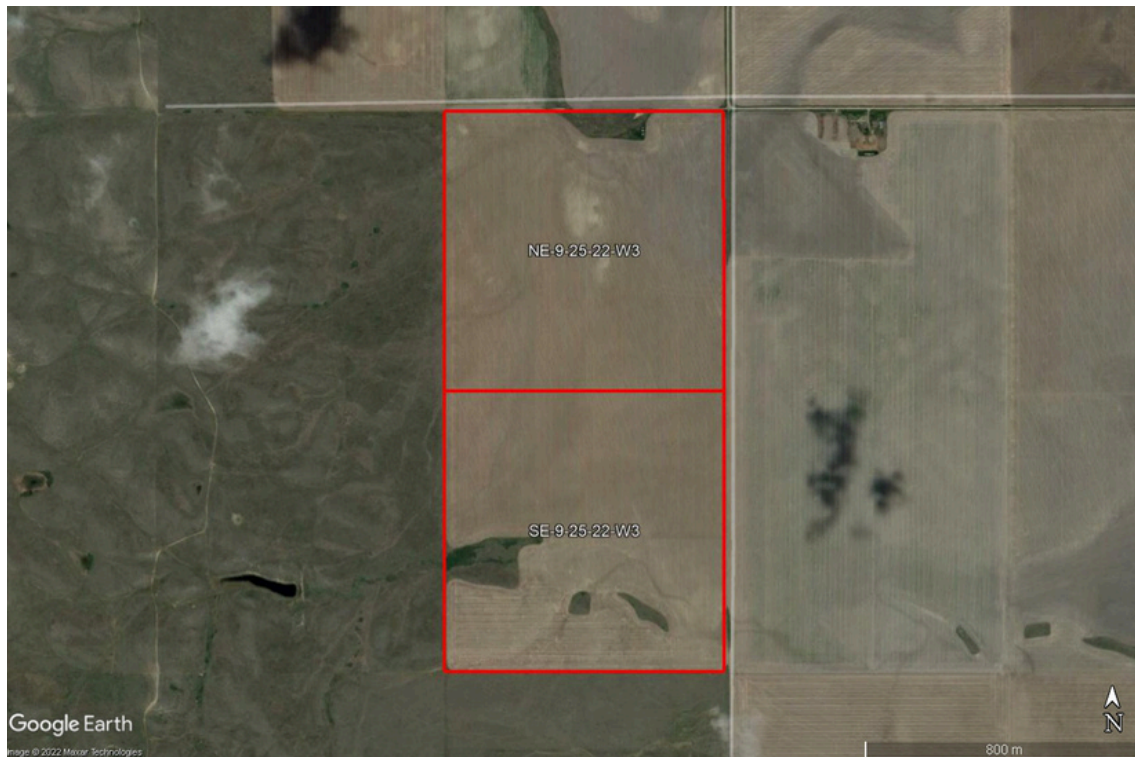




HAMMOND REALTY

For Sale by TENDER

Madison 320 acres Grain Farmland



Grant Anderson

Grant.Anderson@HammondRealty.ca

(306) 831-9214

HammondRealty.ca

FOR SALE BY TENDER

This productive half section of farmland is located approximately 7 miles south of Madison, SK.

Both quarters carry a Crop Insurance rating of E, with soils classified in the Sceptre clay association. The land has an average soil productivity rating of 60.6 for the half section and benefits from a frost-free growing season in excess of 110 days, making it well-suited for the production of cereals, oilseeds, and pulse crops.

The property is improved with three steel grain bins, offering a combined storage capacity of approximately 8,750 bushels. Estimated bin sizes include one 3,800-bushel bin, one 3,300-bushel bin, and one 1,650-bushel bin.

Cropping History:

- 2024: Large Green Lentils
- 2025: Durum Wheat
 - Chemical used: Emit herbicide (IPCO Emit)
 - [IPCO Emit - IPCO Herbicides](#) (website link for Emit)

Buyers are encouraged to review product details and consult their agronomist regarding herbicide residuals and future crop planning.

⚠ Important Notice:

This land is being offered for sale subject to a Right of First Refusal (RORF).

Farmland Summary

2 parcels
320 title acres (ISC)

SAMA Information

320 total acres
305 cultivated acres
15 wetland/bush acres
\$705,200 total 2025 assessed value (AV)
\$352,600 average assessment per 160 acres
60.6 soil final rating (weighted average)



HammondRealty.ca
113 3rd Ave. West
P.O. Box 1054
Biggar, SK S0K 0M0
(306) 948-5052 Office
(306) 948-5053 Fax

Terms and Conditions of the tender are as follows:

1. All offers must be received by Hammond Realty by **12:00 pm Tuesday, January 20th, 2026** (deadline).
2. All offers received are to be left open until **12:00 pm Friday, January 23rd, 2026**. All offers received will be addressed and responded to [i.e. accepted, rejected, or countered].
3. The Seller **IRREVOCABLY** directs, instructs, and authorizes Hammond Realty **NOT to inform or present** the Seller with any offers received until after the date and time detailed in **Term 1.** above.
4. Buyer's offer **must be itemized by legal description**, and any conditions of the offer must be clearly stated.
5. **This land is offered subject to Right of First Refusal by the tenant which must be exercised with 7 calendar days of an offer being accepted.**
6. The highest, or any, offer will not necessarily be accepted.
7. **Buyer must provide a deposit for 5.0% of the price being offered unless otherwise agreed within seven calendar days of acceptance.**
8. Seller will be responsible for the property taxes on the property until December 31, 2025.
9. Any crop unharvested or stored on the land may be harvested and removed from the land according to ***The Agricultural Leaseholds Act***.

Detailed Description of Farmland Property

Legal Land Description								ISC	SAMA Information								SCIC		RM
Map ID	RM	Qtr.	Sec.	Twp.	Rng.	Mer.	Ext.	Title Acres	Total Acres	Cult. Acres	Other Acres	2021 Assessed Fair Value (AV)	2025 Assessed Fair Value (AV)	Soil Association	Soil Texture	Soil Final Rating	Class	Risk Zone	Property Taxes (2024)
1	260	NE	9	25	22	3	0	160.17	160	155	5	263,900	\$376,200	Sceptre	Clay	63.4	E	16	\$1,004.41
2	260	SE	9	25	22	3	0	160.21	160	150	10	233,000	\$329,000	Sceptre	Clay	57.8	E	16	\$886.79
Totals								320.4	320	305	15	\$496,900	\$705,200	Weighted Average Final Rating 60.6					\$1,891.20

Average per 160 acres \$248,450 \$352,600

SAMA Information

This information is collected from Saskatchewan Assessment Management Agency via field sheets on each individual parcel. It includes specific information such as: assessed value, uses of soil (cultivated, arable, pasture, wetlands, etc), number of acres for each use, soil profile information including association & texture, topography, stones, salinity and soil final rating.

Soil Final Rating

The final rating (FR) is the productivity rating for the acres adjusted for economic factors that affect the average cost of production for specified features. The economic factors include stones, topography, natural hazards, man-made hazards, tree cover and miles to market. The final rating units are index points per acre. Soils are given a rating from 100 (best) to 0 (worst). Soils with a final rating under 30 are marginal and rarely cropped.

<https://www.sama.sk.ca/property-owner-services/detailed-property-information>

Saskatchewan Crop Insurance Corporation (SCIC)

SCIC gives a class rating to every quarter section in Saskatchewan to reflect its productivity. Ratings range from Class A (best) to Class P (worst). There are 23 different risk zones in Saskatchewan. Please note a class B rating in risk zone 3 does not necessarily have the same productive capacity as a class B rating in risk zone 16.

[Sask Grains Risk Zones](http://www.saskcropinsurance.com/resources/maps/sask-grains-risk-zone/) <http://www.saskcropinsurance.com/resources/maps/sask-grains-risk-zone/>

[Parcel Crop Insurance Rating](https://www.scic.ca/?/resources/calculators/generic-what-if-insurance-cost-calculator) <https://www.scic.ca/?/resources/calculators/generic-what-if-insurance-cost-calculator>

71600	JACQUELINE FARM LTD. 75600	FARM LTD. 72900	FARM LTD. 41100	TERRE & GIRA WOLF MOSS 7800	& DOUGLAS LUTHER JACOBSON 31100	TRACY P. & V. ANDREAS 65600	74100	75300	77800	77800	76800	77300	78300	76700	48900	72000	73600	68000
FAST SEED FARM LTD.	FAST SEED FARM LTD.	FAST SEED FARM LTD.	FAST SEED FARM LTD.	FAST SEED FARM LTD.	FAST SEED FARM LTD.	SLOUGH BOTTOM ACRES LTD.	SLOUGH BOTTOM ACRES LTD.	KERRY & SHIRLEY JAPP	KERRY & SHIRLEY JAPP	TODD BEECHINOR	CATHERINE PITT	ANDREW, DOROTHY & ALLAN BEWS	ANDREW, DOROTHY & ALLAN BEWS	BRENDA FISCHER	DOUGLAS HORNOR & LINDA MAE WEBER	OLGA PEARCE	DOUGLAS HORNOR & LINDA MAE WEBER	SINCLAIR ACRES INC.
68400	68400	68400	68400	68400	68400	47200	54100	62300	67600	74000	74800	77000	73600	74200	63000	76500	74600	77100
RISH HOLDINGS LTD.	TRISH HOLDINGS LTD.	TRISH HOLDINGS LTD.	TRISH HOLDINGS LTD.	TRISH HOLDINGS LTD.	TRISH HOLDINGS LTD.	DOUGLAS & TRACY CLARK	DOUGLAS & TRACY CLARK	KERRY & SHIRLEY JAPP	KERRY & SHIRLEY JAPP	TODD BEECHINOR	CATHERINE PITT	MARGARET PEDERSEN	MARGARET PEDERSEN	FRED PETERSON	DOUGLAS HORNOR & LINDA MAE WEBER	OLGA PEARCE	DOUGLAS HORNOR & LINDA MAE WEBER	SINCLAIR ACRES INC.
'5600	'5600	'5600	'5600	'5600	'5600	30200	33100	41300	64000	68700	69800	67900	77800	75700	76100	75300	72100	73200
OHN HERBERT	EDITH HERBERT	EDITH HERBERT	EDITH HERBERT	EDITH HERBERT	EDITH HERBERT	DOUGLAS & TRACY CLARK	DOUGLAS & TRACY CLARK	WALTER, EDWIN, KARL & GARY TAPPAUF	WALTER, EDWIN, KARL & GARY TAPPAUF	WALTER, EDWIN, KARL & GARY TAPPAUF	WALTER, EDWIN, KARL & GARY TAPPAUF	JOHN & JOHANNE CRAG BEWS	JOHN & JOHANNE CRAG BEWS	LORNE JOHNSTON	LORNE JOHNSTON	DUTHIE FARMS LTD.	DUTHIE FARMS LTD.	JOHN PAYNE
'5800	'5800	'5800	'5800	'5800	'5800	28500	61500	62300	48000	68100	66500	76400	77800	77200	77200	76000	77200	77200
UTHIE ARMS LTD.	DUTHIE FARMS LTD.	DUTHIE FARMS LTD.	DUTHIE FARMS LTD.	DUTHIE FARMS LTD.	DUTHIE FARMS LTD.	28500	28500	DOUGLAS & TRACY CLARK	DOUGLAS & TRACY CLARK	WALTER, EDWIN, KARL & GARY TAPPAUF	WALTER, EDWIN, KARL & GARY TAPPAUF	LENORA BEWS	LENORA BEWS	LORNE JOHNSTON	LORNE JOHNSTON	DUTHIE FARMS LTD.	DUTHIE FARMS LTD.	DUTHIE FARMS LTD.
52900	52900	52900	52900	52900	52900	28500	28500	56200	68000	58200	74100	62500	62500	73800	77600	75300	76300	76900
WALTER & LINDA FAST	WALTER & LINDA FAST	WALTER & LINDA FAST	WALTER & LINDA FAST	WALTER & LINDA FAST	WALTER & LINDA FAST	G.H. SCHWEITZER ENTERPRISES LTD.	P & V ANDREAS FARMS INC.	P & V ANDREAS FARMS INC.	P & V ANDREAS FARMS INC.	JEANEIL MUTCH	JEANEIL MUTCH	SYLVIA CAMERON & GLEN UZELMAN	SYLVIA CAMERON & GLEN UZELMAN	KEDOBREKA FARMS LTD.	KEDOBREKA FARMS LTD.	DUTHIE FARMS LTD.	DUTHIE FARMS LTD.	CRAIG BEWS
4500	55300	57600	60500	57700	52500	28500	33100	54400	68000	59500	74400	77500	77500	77500	77100	76300	75800	75800
AST SEED ARM LTD.	FAST SEED FARM LTD.	GUDDEN HUTTNER BRETHREN	GUDDEN HUTTNER BRETHREN	HEBERT FARMS LTD.	HEBERT FARMS LTD.	CRAIG & LENORA BEWS	CRAIG & LENORA BEWS	CRAIG & LENORA BEWS	CRAIG & LENORA BEWS	WALTER, EDWIN, KARL & GARY TAPPAUF	WALTER, EDWIN, KARL & GARY TAPPAUF	D. LANE FARMING LTD.	SYLVIA CAMERON & GLEN UZELMAN	KEDOBREKA FARMS LTD.	KEDOBREKA FARMS LTD.	DOUGLAS PORTERFIELD	DOUGLAS PORTERFIELD	EARTH SHAUGHNESSY
0000	56300	58600	59400	58800	54200	29800	28500	49000	61800	67700	77600	78200	78800	77900	68100	74300	78200	78200
GUDDEN HUTTNER BRETHREN	GUDDEN HUTTNER BRETHREN	GUDDEN HUTTNER BRETHREN	GUDDEN HUTTNER BRETHREN	HEBERT FARMS LTD.	HEBERT FARMS LTD.	ROBERT CHAPLIN	ROBERT CHAPLIN	ROBERT CHAPLIN	ROBERT CHAPLIN	ROBERT CHAPLIN	ROBERT CHAPLIN	JACK T. BOYD FARMING Co. LTD.	JACK T. BOYD FARMING Co. LTD.	BEVERLY CHAMBERS	DOROTHY LARSON	JOHN PAYNE	RICHARD & JOAN ZIFFLE	RIC POI
3200	48800	54900	58200	61100	60300	30400	28500	33100	63800	72400	78200	77400	77400	77400	77400	73200	78000	68100
GUDDEN HUTTNER BRETHREN	GUDDEN HUTTNER BRETHREN	GUDDEN HUTTNER BRETHREN	GUDDEN HUTTNER BRETHREN	GUDDEN HUTTNER BRETHREN	GUDDEN HUTTNER BRETHREN	P & V ANDREAS FARMS INC.	P & V ANDREAS FARMS INC.	P & V ANDREAS FARMS INC.	P & V ANDREAS FARMS INC.	ROBERT CHAPLIN	ROBERT CHAPLIN	WITHAGE FARMS LTD.	WITHAGE FARMS LTD.	GORD GRIMES	OLGA PEARCE	JOHN PAYNE	RICHARD & JOAN ZIFFLE	RIC POI
6200	55700	55800	56700	61100	61100	30000	28500	33100	54200	69200	71700	76300	77100	77900	75900	78000	78000	68100
AVID EIB	WALTER & LINDA FAST	GUDDEN HUTTNER BRETHREN	GUDDEN HUTTNER BRETHREN	GUDDEN HUTTNER BRETHREN	GUDDEN HUTTNER BRETHREN	P & V ANDREAS FARMS INC.	P & V ANDREAS FARMS INC.	P & V ANDREAS FARMS INC.	P & V ANDREAS FARMS INC.	BRENT ILOTT FARMS LTD.	BRENT ILOTT FARMS LTD.	BRENT ILOTT FARMS LTD.	BRENT ILOTT FARMS LTD.	GAIL PEARCE	SYLVIA CAMERON & GLEN UZELMAN	GORDON GRIMES	GORDON GRIMES	G.H. SCHWEITZER ENTERPRISES LTD.
8900	53000	48200	47400	58600	33100	33100	33100	28500	58500	62900	53800	59800	73100	75200	77900	76200	77100	78000
AVID EIB	WALTER & LINDA FAST	GUDDEN HUTTNER BRETHREN	GUDDEN HUTTNER BRETHREN	GUDDEN HUTTNER BRETHREN	GUDDEN HUTTNER BRETHREN	P & V ANDREAS FARMS INC.	P & V ANDREAS FARMS INC.	P & V ANDREAS FARMS INC.	P & V ANDREAS FARMS INC.	BRENT ILOTT FARMS LTD.	BRENT ILOTT FARMS LTD.	BRENT ILOTT FARMS LTD.	BRENT ILOTT FARMS LTD.	BRENT ILOTT FARMS LTD.	SYLVIA CAMERON & GLEN UZELMAN	G.H. SCHWEITZER ENTERPRISES LTD.	CRAIG BEWS	HAF JACOBSON
4600	51300	51300	49800	54500	28500	33100	33100	28500	33100	71500	71200	76700	78800	77100	78800	74500	76000	77100
LDA ACHMIE	GUDDEN HUTTNER BRETHREN	GUDDEN HUTTNER BRETHREN	GUDDEN HUTTNER BRETHREN	GUDDEN HUTTNER BRETHREN	GUDDEN HUTTNER BRETHREN	P & V ANDREAS FARMS INC.	P & V ANDREAS FARMS INC.	P & V ANDREAS FARMS INC.	P & V ANDREAS FARMS INC.	ILOTT BROS. FARMING Co. LTD.	ILOTT BROS. FARMING Co. LTD.	ILOTT BROS. FARMING Co. LTD.	ILOTT BROS. FARMING Co. LTD.	JOAN KRAUSS	SYLVIA CAMERON & GLEN UZELMAN	DEREK LANE	D. LANE FARMING LTD.	GORD GRIMES
4600	52100	50600	50100	44100	63800	28500	28500	33100	33100	61800	67500	74900	71400	78200	78800	77300	72100	77100
LIDEN UTTERIAN RETHREN	GUDDEN HUTTNER BRETHREN	GUDDEN HUTTNER BRETHREN	GUDDEN HUTTNER BRETHREN	GUDDEN HUTTNER BRETHREN	GUDDEN HUTTNER BRETHREN	28500	28500	33100	30800	28500	73000	68900	75300	77600	75500	74900	73100	69000
4500	53500	50500	55600	66600	677300	28500	28500	33100	30800	28500	73000	68900	75300	77600	75500	74900	73100	69000
LIDEN UTTERIAN RETHREN	GUDDEN HUTTNER BRETHREN	GUDDEN HUTTNER BRETHREN	GUDDEN HUTTNER BRETHREN	B & J FARMS LTD.	ARABIAN INVESTMENTS	GUDDEN HUTTNER BRETHREN	GUDDEN HUTTNER BRETHREN	G.H. SCHWEITZER ENTERPRISES LTD.	G.H. SCHWEITZER ENTERPRISES LTD.	DENNIS SCHNEIDER	DENNIS SCHNEIDER	SINCLAIR ACRES INC.	SINCLAIR ACRES INC.	SINCLAIR ACRES INC.	W.E. ROOKE HOLDINGS LTD.	KNIGHT FARMS LTD.	G.H. SCHWEITZER ENTERPRISES LTD.	
8300	52200	53900	56300	65600	62900	32800	28500	28500	28500	30800	60200	71700	77800	75500	68200	75300	71400	78000
LIDEN UTTERIAN RETHREN	GUDDEN HUTTNER BRETHREN	GUDDEN HUTTNER BRETHREN	GUDDEN HUTTNER BRETHREN	B & J FARMS LTD.	ARABIAN INVESTMENTS	GUDDEN HUTTNER BRETHREN	GUDDEN HUTTNER BRETHREN	G.H. SCHWEITZER ENTERPRISES LTD.	G.H. SCHWEITZER ENTERPRISES LTD.	DOUGLAS SCHNEIDER	DOUGLAS SCHNEIDER	BRENT ILOTT FARMS LTD.	DOUGLAS SCHNEIDER	BRENT ILOTT FARMS LTD.	W.E. ROOKE HOLDINGS LTD.	KNIGHT FARMS LTD.	CYRIL CODE	
0100	60900	52500	62500	67300	56800	51400	51500	28500	28500	43700	26300	73500	74400	78800	75500	73400	76900	69800
LIDEN UTTERIAN RETHREN	GUDDEN HUTTNER BRETHREN	GUDDEN HUTTNER BRETHREN	GUDDEN HUTTNER BRETHREN	GUDDEN HUTTNER BRETHREN	GUDDEN HUTTNER BRETHREN	GUDDEN HUTTNER BRETHREN	GUDDEN HUTTNER BRETHREN	G.H. SCHWEITZER ENTERPRISES LTD.	G.H. SCHWEITZER ENTERPRISES LTD.	G.H. SCHWEITZER ENTERPRISES LTD.	G.H. SCHWEITZER ENTERPRISES LTD.	BRENT ILOTT FARMS LTD.	VAUDIS & BRENT ILOTT	BRENT ILOTT FARMS LTD.	VAUDIS & VALERIE HAMILTON	GORDON GRIMES	REHAF	
5000	58800	59200	57100	59300	32000	28500	28500	33100	33100	28500	28500	75600	71800	71600	75000	75000	71900	71900
LIDEN UTTERIAN RETHREN	GUDDEN HUTTNER BRETHREN	GUDDEN HUTTNER BRETHREN	GUDDEN HUTTNER BRETHREN	GUDDEN HUTTNER BRETHREN	GUDDEN HUTTNER BRETHREN	28500	28500	33100	33100	28500	28500	75600	71800	71600	75000	75000	71900	71900
6800	62600	59400	58000	58000	32300	28500	28500	30400	33100	28500	28500	50600	50600	52600	71300	77600	77600	77600
LIDEN UTTERIAN RETHREN	GUDDEN HUTTNER BRETHREN	GUDDEN HUTTNER BRETHREN	GUDDEN HUTTNER BRETHREN	GUDDEN HUTTNER BRETHREN	GUDDEN HUTTNER BRETHREN	28500	28500	28500	28500	28500	28500	28500	28500	28500	28500	28500	28500	28500
9500	60900	57800	52300	55600	28500	28500	28500	28500	28500	28500	28500	28500	28500	28500	28500	28500	28500	28500
LIDEN UTTERIAN RETHREN	GUDDEN HUTTNER BRETHREN	GUDDEN HUTTNER BRETHREN	GUDDEN HUTTNER BRETHREN	GUDDEN HUTTNER BRETHREN	GUDDEN HUTTNER BRETHREN	28500	28500	28500	28500	28500	28500	28500	28500	28500	28500	28500	28500	28500
6000	57600	56100	48700	48800	28500	28500	28500	28500	28500	28500	28500	28500	28500	28500	28500	28500	28500	28500
LIDEN UTTERIAN RETHREN	GUDDEN HUTTNER BRETHREN	GUDDEN HUTTNER BRETHREN	GUDDEN HUTTNER BRETHREN	GUDDEN HUTTNER BRETHREN	GUDDEN HUTTNER BRETHREN	28500	28500	28500	28500	28500	28500	28500	28500	28500	28500	28500	28500	28500
6000	61800	57500	53200	47800	49400	28500	28500	28500	28500	28500	28500	28500	28500	28500	28500	28500	28500	28500
ETH & IARLENE IECK	GUDDEN HUTTNER BRETHREN	GUDDEN HUTTNER BRETHREN	GUDDEN HUTTNER BRETHREN	GUDDEN HUTTNER BRETHREN	GUDDEN HUTTNER BRETHREN	28500	28500	28500	28500	28500	28500	28500	28500	28500	28500	28500	28500	28500
	GUDDEN HUTTNER BRETHREN	GUDDEN HUTTNER BRETHREN	GUDDEN HUTTNER BRETHREN	GUDDEN HUTTNER BRETHREN	GUDDEN HUTTNER BRETHREN	28500	28500	28500	28500	28500	28500	28500	28500	28500	28500	28500	28500	28500
	GUDDEN HUTTNER BRETHREN	GUDDEN HUTTNER BRETHREN	GUDDEN HUTTNER BRETHREN	GUDDEN HUTTNER BRETHREN	GUDDEN HUTTNER BRETHREN	28500	28500	28500	28500	28500	28500	28500	28500	28500	28500	28500	28500	28500
	GUDDEN HUTTNER BRETHREN	GUDDEN HUTTNER BRETHREN	GUDDEN HUTTNER BRETHREN	GUDDEN HUTTNER BRETHREN	GUDDEN HUTTNER BRETHREN	28500	28500	28500	28500	28500	28500	28500	28500	28500	28500	28500	28500	28500
	GUDDEN HUTTNER BRETHREN	GUDDEN HUTTNER BRETHREN	GUDDEN HUTTNER BRETHREN	GUDDEN HUTTNER BRETHREN	GUDDEN HUTTNER BRETHREN	28500	28500	28500	28500	28500	28500	28500	28500	28500	28500	28500	28500	28500
	GUDDEN HUTTNER BRETHREN	GUDDEN HUTTNER BRETHREN	GUDDEN HUTTNER BRETHREN	GUDDEN HUTTNER BRETHREN	GUDDEN HUTTNER BRETHREN	28500	28500	28500	28500	28500	28500	28500	28500	28500	28500	28500	28500	28500
	GUDDEN HUTTNER BRETHREN	GUDDEN HUTTNER BRETHREN	GUDDEN HUTTNER BRETHREN	GUDDEN HUTTNER BRETHREN	GUDDEN HUTTNER BRETHREN	28500	28500	28500	28500	28500	28500	28500	28500	28500	28500	28500	28500	28500
	GUDDEN HUTTNER BRETHREN	GUDDEN HUTTNER BRETHREN	GUDDEN HUTTNER BRETHREN	GUDDEN HUTTNER BRETHREN	GUDDEN HUTTNER BRETHREN	28500	28500	28500	28500	28500	28500	28500	28500	28500	28500	28500	28500	28500
	GUDDEN HUTTNER BRETHREN	GUDDEN HUTTNER BRETHREN	GUDDEN HUTTNER BRETHREN	GUDDEN HUTTNER BRETHREN	GUDDEN HUTTNER BRETHREN	28500	28500	28500	28500	28500	28500	28500	28500	28500	28500	28500	28500	28500
	GUDDEN HUTTNER BRETHREN	GUDDEN HUTTNER BRETHREN	GUDDEN HUTTNER BRETHREN	GUDDEN HUTTNER BRETHREN	GUDDEN HUTTNER BRETHREN	28500	28500	28500	28500	28500	28500	28500	28500	28500	28500	28500	28500	28500
	GUDDEN HUTTNER BRETHREN	GUDDEN HUTTNER BRETHREN	GUDDEN HUTTNER BRETHREN	GUDDEN HUTTNER BRETHREN	GUDDEN HUTTNER BRETHREN	28500	28500	28500	28500	28500	28500	28500	28500	28500	28500	28500	28500	28500
	GUDDEN HUTTNER BRETHREN	GUDDEN HUTTNER BRETHREN	GUDDEN HUTTNER BRETHREN	GUDDEN HUTTNER BRETHREN	GUDDEN HUTTNER BRETHREN	28500	28500	28500	28500	28500	28500	28500	28500	28500	28500	28500	28500	28500
	GUDDEN HUTTNER BRETHREN	GUDDEN HUTTNER BRETHREN	GUDDEN HUTTNER BRETHREN	GUDDEN HUTTNER BRETHREN	GUDDEN HUTTNER BRETHREN	28500	28500	28500	28500	28500	28500	28500	28500	28500	28500	28500	28500	28500
	GUDDEN HUTTNER BRETHREN	GUDDEN HUTTNER BRETHREN	GUDDEN HUTTNER BRETHREN	GUDDEN HUTTNER BRETHREN	GUDDEN HUTTNER BRETHREN	28500	28500	28500	28500	28500	28500	28500	28500	28500	28500	28500	28500	28500
	GUDDEN HUTTNER BRETHREN	GUDDEN HUTTNER BRETHREN	GUDDEN HUTTNER BRETHREN	GUDDEN HUTTNER BRETHREN	GUDDEN HUTTNER BRETHREN	28500	28500	28500	28500	28500	28500	28500	28500	28500	28500	28500	28500	28500
	GUDDEN HUTTNER BRETHREN	GUDDEN HUTTNER BRETHREN	GUDDEN HUTTNER BRETHREN	GUDDEN HUTTNER BRETHREN	GUDDEN HUTTNER BRETHREN	28500	28500	28500	28500	28500	28500	28500	28500	28500	28500	28500	28500	28500
	GUDDEN HUTTNER BRETHREN	GUDDEN HUTTNER BRETHREN	GUDDEN HUTTNER BRETHREN	GUDDEN HUTTNER BRETHREN	GUDDEN HUTTNER BRETHREN	28500	28500	28500	28500	28500	28500	28500	28500	28500	28500	28500	28500	28500
	GUDDEN HUTTNER BRETHREN	GUDDEN HUTTNER BRETHREN	GUDDEN HUTTNER BRETHREN	GUDDEN HUTTNER BRETHREN	GUDDEN HUTTNER BRETHREN	28500	28500	28500	28500	28500	28500	28500	28500	28500	28500	28500	28500	28500
	GUDDEN HUTTNER BRETHREN																	

