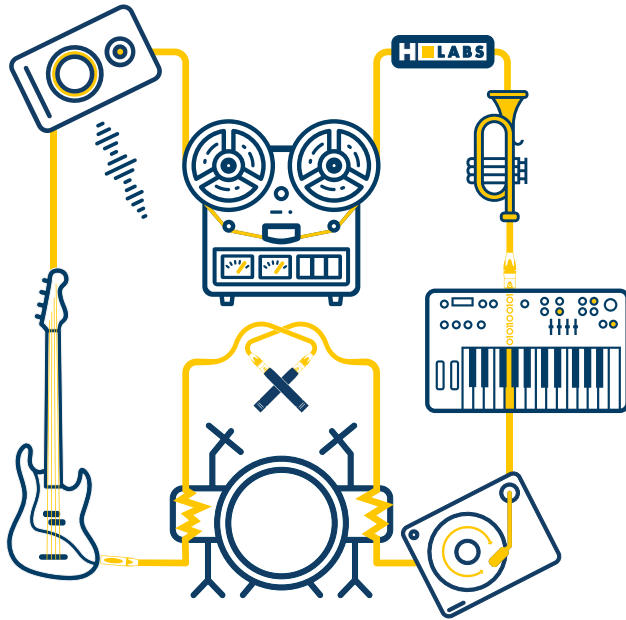


H LABS

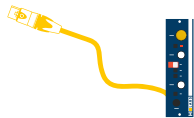
PATCH500

Comprehensive patching
for your 500-series lunchbox

USER MANUAL V9.25



Get the best sound.
In any situation.

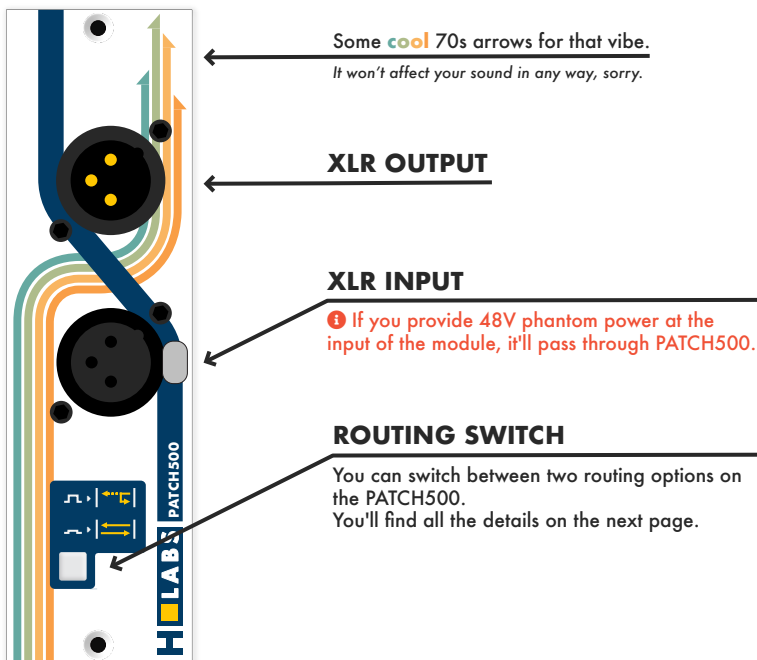


Plug an HLabs.

INTRODUCTION

The PATCH500 is a simple utility module that adds XLR input and output with routing options to the front panel of your 500-series lunchbox.

With its 100% relay-operated passive routing, the PATCH500 can be seamlessly integrated into your setup without being heard.



SPECIFICATIONS

- ▶ 100% relay-operated routing
- ▶ Compatible with analog and digital (AES/EBU) signals

Designed and assembled in our workshop in France.



MAINTENANCE

Thanks to their modular design using mainly old school THT components, our products are robust and will be easily serviced for decades. Feel free to contact us for any maintenance operation or spare parts, we will always be there to help.

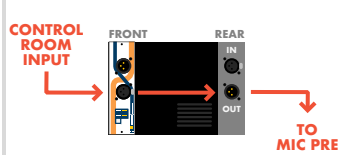
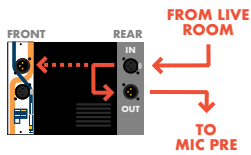
ROUTING EXAMPLES

i If your lunchbox has some linking options between the slots (like internal jumpers or external switches), you'll be able to integrate PATCH500 in many configurations without any rear cabling.



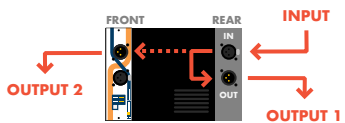
SWITCHABLE FRONT INPUT

Add a local input to your rack so you can mic up in the control room.



PASSIVE SPLITTER

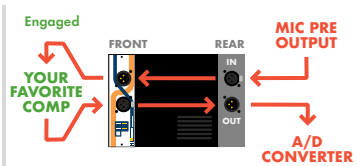
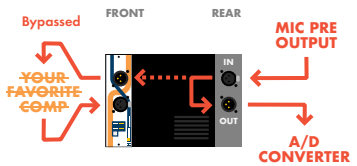
Split your input signal to 2 different outputs, to compare different mic preamps for example.



i Please note that this simple split means there's no decoupling between the two outputs, which changes the impedance and level of your signal.

SWITCHABLE INSERT

Easily insert analog hardware into your recording or mixing chain. The routing switch then acts as a true-bypass.



THANK YOU

for your purchase



For any question,
feel free to contact us at
support@hlab.audio

H  **LABS**
hlab.audio