

9301 WILSHIRE BOULEVARD

BEVERLY HILLS, CA 90210



\$2.00 PSF BROKER BONUS*

**9301 WILSHIRE IS OFFERING A LEASE SPECIAL!
CALL TO INQUIRE ABOUT OUR REDUCED FULL SERVICE RATES**

*LIMITED TIME OFFER: BROKER BONUS APPLIES TO NEW TENANT NEGOTIATIONS STARTED IN 2025 WITH A MINIMUM 3-YEAR LEASE TERM AND A FULLY EXECUTED LEASE PROPERLY SECURED BY TENANT BY SEPT. 30, 2025.



CAROL ROTH

PRINCIPAL

COMMERCIAL REALTY PARTNERS

310.285.0800

CROTH@COMMERCIALREALTYPARTNERS.COM

LICENSE #: 01344182

CINDY WHITE

PRINCIPAL

COMMERCIAL REALTY PARTNERS

310.285.0800

CWHITE@COMMERCIALREALTYPARTNERS.COM

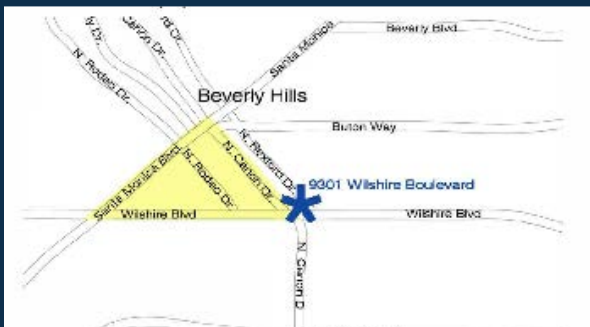
LICENSE #: 01106097



Although all information furnished regarding the property is from sources deemed reliable, such information has not been verified and no express representation is made nor is any to be implied as to the accuracy thereof and it is submitted subject to errors, omissions, change of price, rental or other conditions, or withdrawal without notice

A large, modern, multi-story office building with a white facade and extensive glass windows. Two tall palm trees stand in front of the building. The address '9301' is visible on the lower left and right corners of the building. A street lamp and a red banner are also visible in the foreground.

PARKING: 2.50/1000 – OFFICE
2.85/1000 – MEDICAL



LICENSE #: 01106097



Although all information furnished regarding the property is from sources deemed reliable, such information has not been verified and no express representation is made nor is any to be implied as to the accuracy thereof and it is submitted subject to errors, omissions, change of price, rental or other conditions, or withdrawal without notice



FEATURES

- CLASS A OFFICE BUILDING LOCATED ADJACENT TO THE PRESTIGIOUS GOLDEN TRIANGLE
- WALKING DISTANCE TO SOME OF THE FINEST SHOPS, RESTAURANTS AND ENTERTAINMENT IN THE WORLD
- EASY ACCESS AND CLOSE PROXIMITY TO DOWNTOWN LOS ANGELES, WEST LOS ANGELES, AND HOLLYWOOD/BURBANK
- AMPLE MONTHLY AND VISITOR PARKING ONSITE
- EXCEPTIONAL VIEWS AND EFFICIENT FLOOR PLANS
- MOVE IN READY SUITES
- PROFESSIONAL ON-SITE MANAGEMENT



CAROL ROTH
PRINCIPAL
COMMERCIAL REALTY PARTNERS
310.285.0800
CROTH@COMMERCIALREALTYPARTNERS.COM
LICENSE #: 01344182

CINDY WHITE
PRINCIPAL
COMMERCIAL REALTY PARTNERS
310.285.0800
CWHITE@COMMERCIALREALTYPARTNERS.COM
LICENSE #: 01106097



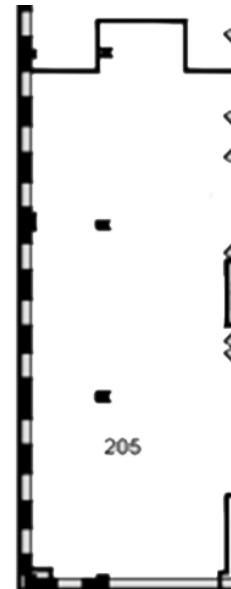
Although all information furnished regarding the property is from sources deemed reliable, such information has not been verified and no express representation is made nor is any to be implied as to the accuracy thereof and it is submitted subject to errors, omissions, change of price, rental or other conditions, or withdrawal without notice

9301 WILSHIRE

BEVERLY HILLS, CALIFORNIA

Suite 205

3,054 RSF



CAROL ROTH

PRINCIPAL

COMMERCIAL REALTY PARTNERS

310.285.0800

CROTH@COMMERCIALREALTYPARTNERS.COM

LICENSE #: 01344182

CINDY WHITE

PRINCIPAL

COMMERCIAL REALTY PARTNERS

310.285.0800

CWHITE@COMMERCIALREALTYPARTNERS.COM

LICENSE #: 01106097



Although all information furnished regarding the property is from sources deemed reliable, such information has not been verified and no express representation is made nor is any to be implied as to the accuracy thereof and it is submitted subject to errors, omissions, change of price, rental or other conditions, or withdrawal without notice

9301 WILSHIRE

BEVERLY HILLS, CALIFORNIA



Suite 208
3,367 RSF



CAROL ROTH
PRINCIPAL
COMMERCIAL REALTY PARTNERS
310.285.0800
CROTH@COMMERCIALREALTYPARTNERS.COM
LICENSE #: 01344182

CINDY WHITE
PRINCIPAL
COMMERCIAL REALTY PARTNERS
310.285.0800
CWHITE@COMMERCIALREALTYPARTNERS.COM
LICENSE #: 01106097



Although all information furnished regarding the property is from sources deemed reliable, such information has not been verified and no express representation is made nor is any to be implied as to the accuracy thereof and it is submitted subject to errors, omissions, change of price, rental or other conditions, or withdrawal without notice

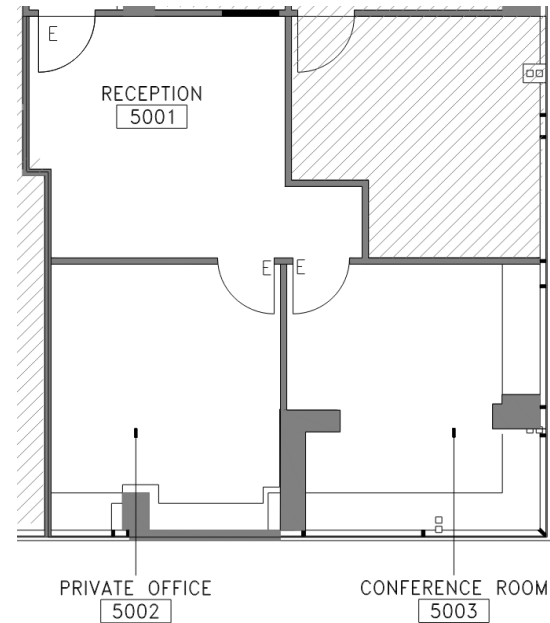
9301 WILSHIRE

BEVERLY HILLS, CALIFORNIA

Suite 500

711 RSF

(contiguous to suite 502)



CAROL ROTH

PRINCIPAL

COMMERCIAL REALTY PARTNERS

310.285.0800

CROTH@COMMERCIALREALTYPARTNERS.COM

LICENSE #: 01344182

CINDY WHITE

PRINCIPAL

COMMERCIAL REALTY PARTNERS

310.285.0800

CWHITE@COMMERCIALREALTYPARTNERS.COM

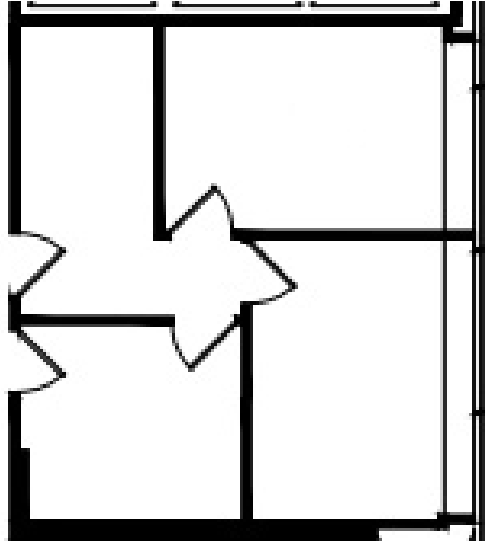
LICENSE #: 01106097



Although all information furnished regarding the property is from sources deemed reliable, such information has not been verified and no express representation is made nor is any to be implied as to the accuracy thereof and it is submitted subject to errors, omissions, change of price, rental or other conditions, or withdrawal without notice

9301 WILSHIRE

BEVERLY HILLS, CALIFORNIA



Suite 501
649 RSF



CAROL ROTH

PRINCIPAL

COMMERCIAL REALTY PARTNERS

310.285.0800

CROTH@COMMERCIALREALTYPARTNERS.COM

LICENSE #: 01344182

CINDY WHITE

PRINCIPAL

COMMERCIAL REALTY PARTNERS

310.285.0800

CWHITE@COMMERCIALREALTYPARTNERS.COM

LICENSE #: 01106097



Although all information furnished regarding the property is from sources deemed reliable, such information has not been verified and no express representation is made nor is any to be implied as to the accuracy thereof and it is submitted subject to errors, omissions, change of price, rental or other conditions, or withdrawal without notice

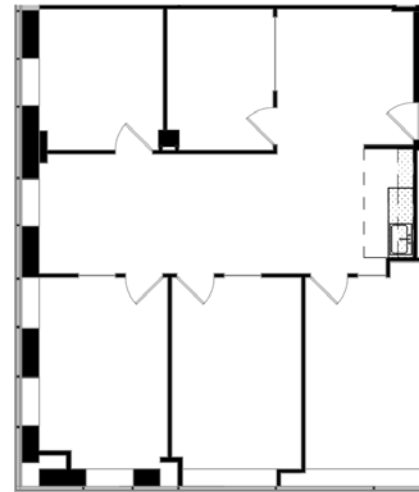
9301 WILSHIRE

BEVERLY HILLS, CALIFORNIA

Suite 502

1,576 RSF

(contiguous to suite 500)



CAROL ROTH

PRINCIPAL

COMMERCIAL REALTY PARTNERS

310.285.0800

CROTH@COMMERCIALREALTYPARTNERS.COM

LICENSE #: 01344182

CINDY WHITE

PRINCIPAL

COMMERCIAL REALTY PARTNERS

310.285.0800

CWHITE@COMMERCIALREALTYPARTNERS.COM

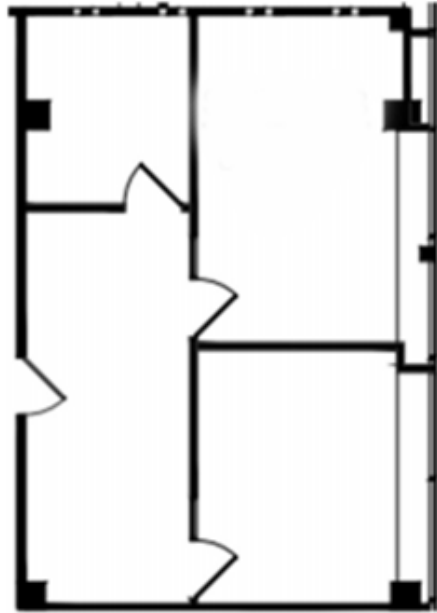
LICENSE #: 01106097



Although all information furnished regarding the property is from sources deemed reliable, such information has not been verified and no express representation is made nor is any to be implied as to the accuracy thereof and it is submitted subject to errors, omissions, change of price, rental or other conditions, or withdrawal without notice

9301 WILSHIRE

BEVERLY HILLS, CALIFORNIA



Suite 508

817 RSF



CAROL ROTH

PRINCIPAL

COMMERCIAL REALTY PARTNERS

310.285.0800

CROTH@COMMERCIALREALTYPARTNERS.COM

LICENSE #: 01344182

CINDY WHITE

PRINCIPAL

COMMERCIAL REALTY PARTNERS

310.285.0800

CWHITE@COMMERCIALREALTYPARTNERS.COM

LICENSE #: 01106097



Although all information furnished regarding the property is from sources deemed reliable, such information has not been verified and no express representation is made nor is any to be implied as to the accuracy thereof and it is submitted subject to errors, omissions, change of price, rental or other conditions, or withdrawal without notice

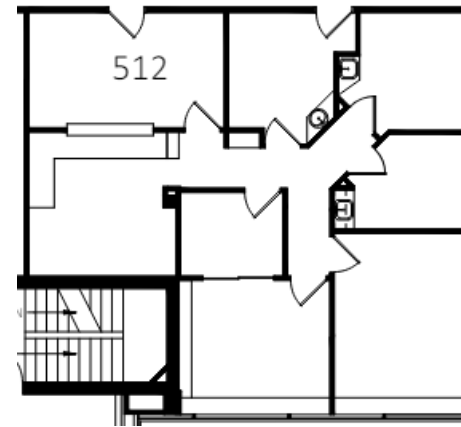
9301 WILSHIRE

BEVERLY HILLS, CALIFORNIA

Suite 512

1,377 RSF

(contiguous to suite 516)



CAROL ROTH

PRINCIPAL

COMMERCIAL REALTY PARTNERS

310.285.0800

CROTH@COMMERCIALREALTYPARTNERS.COM

LICENSE #: 01344182

CINDY WHITE

PRINCIPAL

COMMERCIAL REALTY PARTNERS

310.285.0800

CWHITE@COMMERCIALREALTYPARTNERS.COM

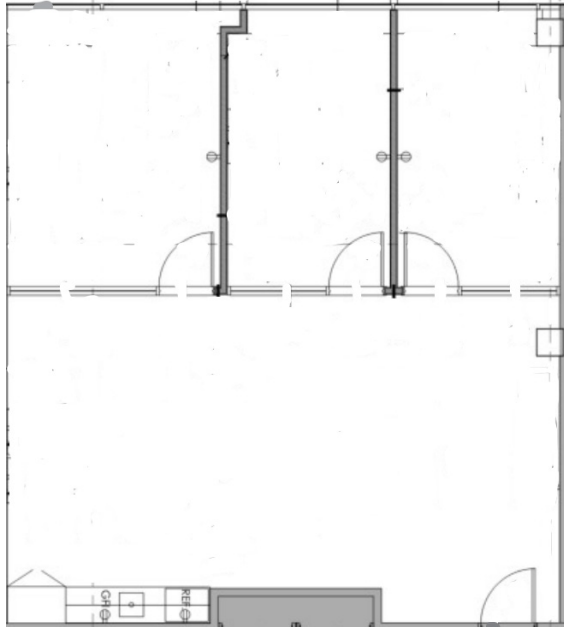
LICENSE #: 01106097



Although all information furnished regarding the property is from sources deemed reliable, such information has not been verified and no express representation is made nor is any to be implied as to the accuracy thereof and it is submitted subject to errors, omissions, change of price, rental or other conditions, or withdrawal without notice

9301 WILSHIRE

BEVERLY HILLS, CALIFORNIA



Suite 516

1,309 RSF

(contiguous to suite 512)



CAROL ROTH

PRINCIPAL

COMMERCIAL REALTY PARTNERS

310.285.0800

CROTH@COMMERCIALREALTYPARTNERS.COM

LICENSE #: 01344182

CINDY WHITE

PRINCIPAL

COMMERCIAL REALTY PARTNERS

310.285.0800

CWHITE@COMMERCIALREALTYPARTNERS.COM

LICENSE #: 01106097

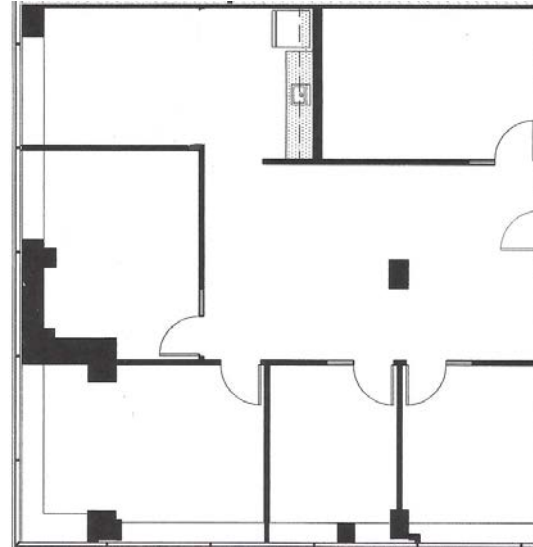


Although all information furnished regarding the property is from sources deemed reliable, such information has not been verified and no express representation is made nor is any to be implied as to the accuracy thereof and it is submitted subject to errors, omissions, change of price, rental or other conditions, or withdrawal without notice

9301 WILSHIRE

BEVERLY HILLS, CALIFORNIA

Suite 604
1,958 RSF



CAROL ROTH
PRINCIPAL
COMMERCIAL REALTY PARTNERS
310.285.0800
CROTH@COMMERCIALREALTYPARTNERS.COM
LICENSE #: 01344182

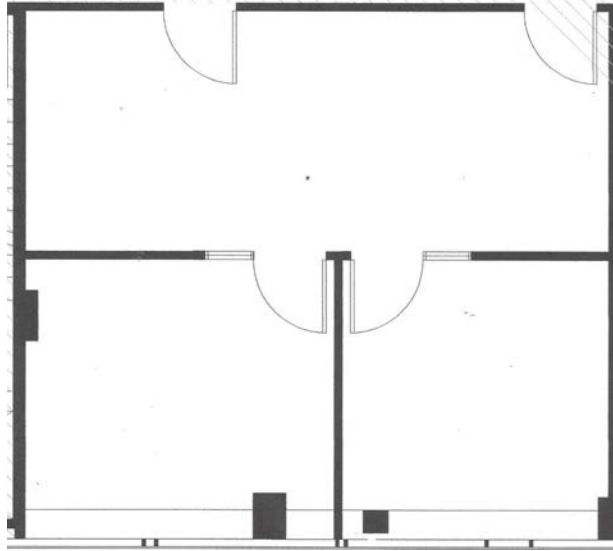
CINDY WHITE
PRINCIPAL
COMMERCIAL REALTY PARTNERS
310.285.0800
CWHITE@COMMERCIALREALTYPARTNERS.COM
LICENSE #: 01106097



Although all information furnished regarding the property is from sources deemed reliable, such information has not been verified and no express representation is made nor is any to be implied as to the accuracy thereof and it is submitted subject to errors, omissions, change of price, rental or other conditions, or withdrawal without notice

9301 WILSHIRE

BEVERLY HILLS, CALIFORNIA



Suite 605
649 RSF



CAROL ROTH
PRINCIPAL
COMMERCIAL REALTY PARTNERS
310.285.0800
CROTH@COMMERCIALREALTYPARTNERS.COM
LICENSE #: 01344182

CINDY WHITE
PRINCIPAL
COMMERCIAL REALTY PARTNERS
310.285.0800
CWHITE@COMMERCIALREALTYPARTNERS.COM
LICENSE #: 01106097



Although all information furnished regarding the property is from sources deemed reliable, such information has not been verified and no express representation is made nor is any to be implied as to the accuracy thereof and it is submitted subject to errors, omissions, change of price, rental or other conditions, or withdrawal without notice