



# YOUR CHILD, YOUR CHOICE: CHOOSING A PRE-K PROGRAM

## 1. START YOUR SEARCH BY THINKING ABOUT YOUR PRIORITIES

### Logistics

- When do you want to start care?
- What hours of care do you need?
- What is the best location for you? Near your home, work, or your child(ren)'s school?



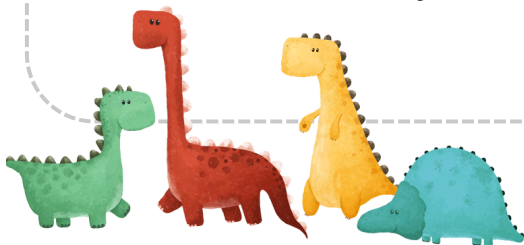
### Your Child's Needs

- Does your child still need to nap?
- Can your child go to the bathroom on their own?
- Does your child have any special needs?



### Personal Preferences

- What language(s) would you like your child care provider to speak?
- Would you be open to coordinating full-day care across more than one location?
- Do you want your child to be with lots of children or just a few?



### Budget

- How much you can afford to pay for Pre-K?
- Do you know if you qualify for child care payment assistance?



## 2. CALL OR MESSAGE THE PROGRAM TO LEARN ABOUT IT

Some sample questions could be:

Logistics

- Do you have space for my child?
- What are your hours of operation?
- Do you provide meals?
- What do you charge? Are there discounts or scholarships available?

Program  
structure

- What does a typical day look like for the kids? Is there a daily schedule I can see?
- Does my child need to be fully potty trained? How will they be supported if they aren't?
- What are rules about keeping children home when they are sick?
- How will teachers share updates with me about my child ?
- How do you share news and announcements?
- Are there ways for parents to be involved in the program?

Safety &  
Health

- Do all adults complete background checks before spending time with the children?
- Who is certified in child CPR and first aid?

Provider & Child  
Interaction

- What staff will be in my child's class?
- What type of experience does each staff member have?
- What discipline methods do you use?
- What do you do if a child has a tantrum? If a child hits or bites?

## 3. GO ON A TOUR TO SEE FOR YOURSELF

Things to observe:

- Do there seem to be enough adults for the number of children?
- Are the surroundings clean and safe?
- Are children children free to play and explore for a significant part of their day?
- Do any activities happen outdoors?
- Do you see discipline and guidance methods that match your preferences?

Selecting a Pre-K program can feel overwhelming at times. Trust your gut and know that your Child Care Resource and Referral agency is available to help. Find your closest one at:

[ccala.net/connect](https://ccala.net/connect)

