

Map of Bush Fire Prone Areas

Instructions for Use

Table of Contents

Opening the Map of Bush Fire Prone Areas	2
Key features of the Map of Bush Fire Prone Areas	2
Searching the Map of Bush Fire Prone Areas	2
Querying the Map	4
Printing the Map of Bush Fire Prone Areas	4
Downloading the dataset for use in GIS	4
Troubleshooting	4
Pop-up box has numbers in brackets, for example (1 of 2)	4
Areas of the Map are not loading.....	6
A new property can't be found using the search function.....	6
More information	6



Opening the Map of Bush Fire Prone Areas

The Map is available via the Department of Fire and Emergency Services website at: www.dfes.wa.gov.au/bushfire/bushfireproneareas.

It can also be accessed directly at: <https://maps.slip.wa.gov.au/landgate/bushfireprone>

You may need to refresh your browser to access the latest version of the Map.

Key features of the Map of Bush Fire Prone Areas

The Map appears as shown in Figure 1. At the top of the screen, you can access links to the Instructions for Use, Frequently Asked Questions and the Feedback Survey. The search field and zoom buttons are available at the top left of the screen.

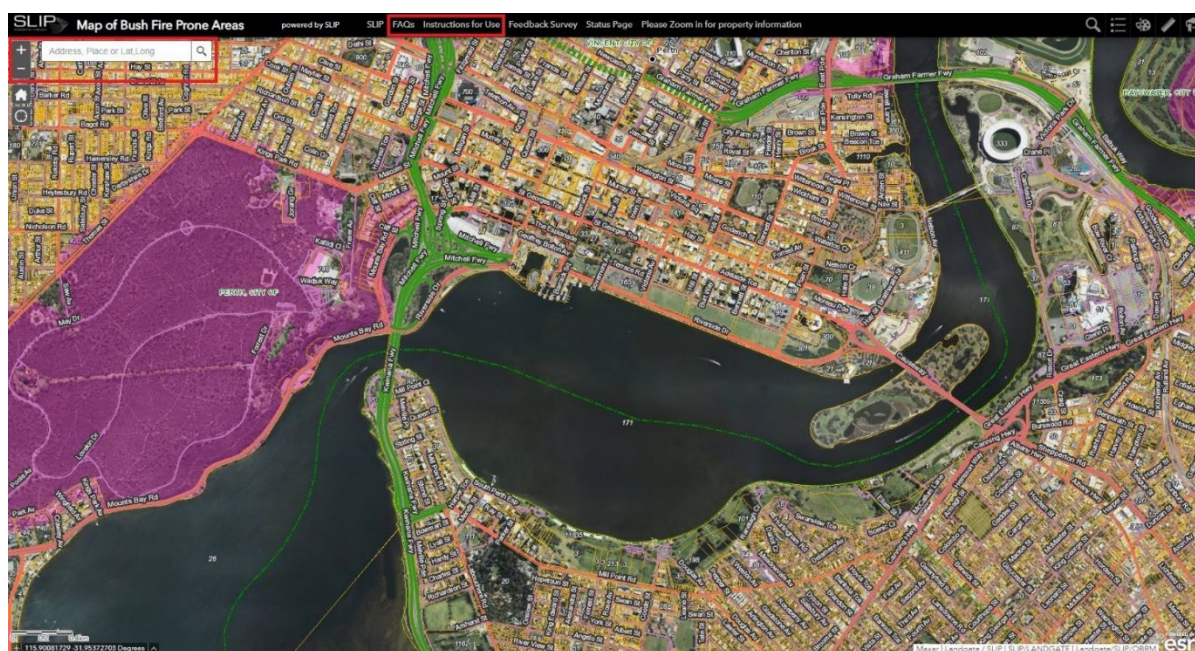


Figure 1

Searching the Map of Bush Fire Prone Areas

To search by place or address, type your location of interest into the search field in the top left of screen.

You may also search using GPS coordinates using a latitude, longitude format (for example, -31.976,115.765). Note there is no space after the comma between the coordinates. You can also drag, zoom and scroll to explore the Map using your mouse.

The search feature also allows you to find new or proposed addresses. The Proposed Roads search is accessed by selecting the magnifying glass at the top right of the screen (Figure 2).

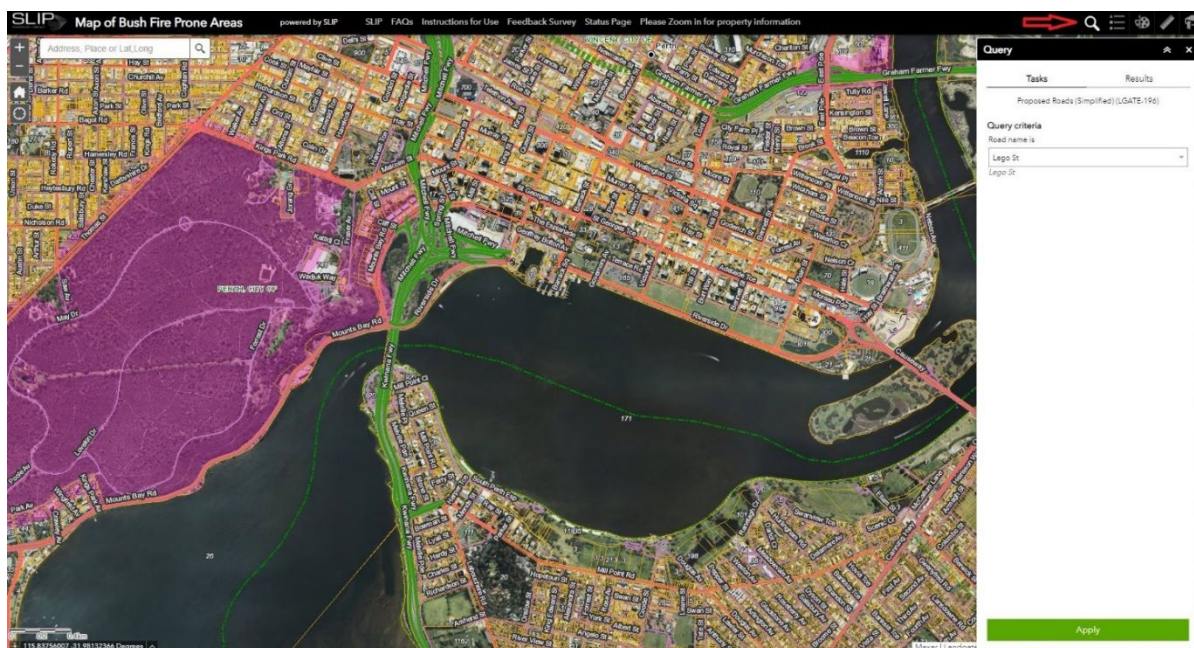


Figure 2

Type the name of the road of interest in the 'Road Name is...' field or click on the dropdown arrow next to this field to scroll through the full list of proposed roads for Western Australia (Figure 3).

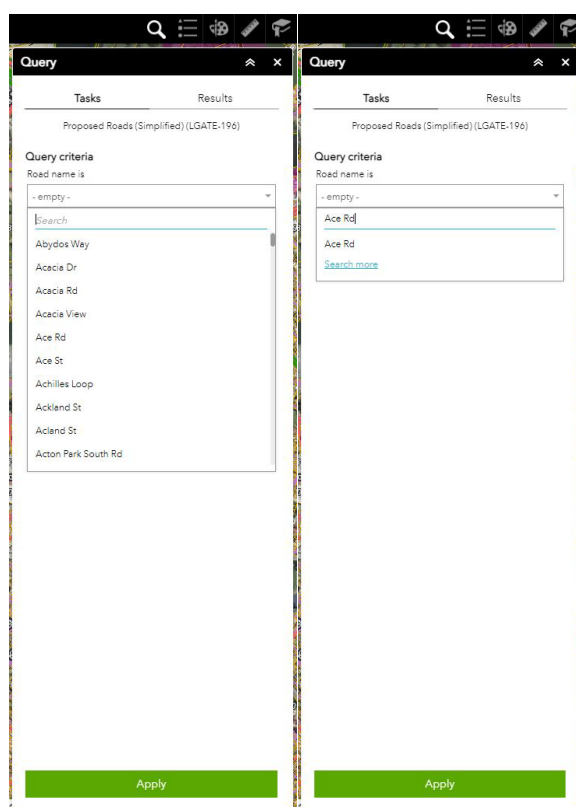


Figure 3

Click 'Apply' and the Map will zoom to the road of interest. The proposed road will be displayed in green on the Map.

Querying the Map

Bushfire Prone Areas are coloured blue or pink on the Map. Those shown in blue are newly designated and subject to the 4 month transition period included in the *Planning and Development (Local Planning Schemes) Regulations 2015* and the *Building Regulations 2012*. Those shown in pink have been designated as bushfire prone for longer than four months. The Map now also includes a region of lesser landscape scale bushfire risk, called Area 1. Bushfire Prone Areas within Area 1 have a blue or pink hatching, depending on whether they are newly designated.

The orange-yellow lines on the Map are property boundaries. These become more detailed as you zoom into the Map. Clicking within the boundaries of a property will generate a pop-up box containing information about the property's bushfire prone status. The border of the selected property will change to bright blue so it is easy to identify which property the information relates to.

The pop-up box contains:

- The designation of the site:
 - Bushfire Prone Area 1
 - Bushfire prone Area 2; or
 - Not Applicable.
- The designation date for bush fire prone area and the date it was first designated. For example '01/06/19 (since 08/12/15)'.
- The local government area the property is in.
- Comments about the designation for the property.
- An overview paragraph explaining the Map.
- Links for additional information.

Properties that are not bushfire prone have the text "Not Applicable" after the 'Designation' heading.

For properties that are within a Bushfire Prone Area, the 'Designation' field will also state whether the four month transition period is in effect.

Printing the Map of Bush Fire Prone Areas

You can print directly from the Map by right-clicking on the Map and selecting 'Print' from the list that appears.

Downloading the dataset for use in GIS

The Bush Fire Prone Areas dataset is publicly available to download from the data.wa.gov.au website and the [Shared Location Information Platform \(SLIP\)](#) as a Shapefile, Web Mapping Service (WMS) and Web Feature Service (WFS). Previous versions of the Map are also available to download.

Troubleshooting

Pop-up box has numbers in brackets, for example (1 of 2)

Numbers in brackets, for example (1 of 2), may appear in the blue heading of the pop-up box (Figure 4) if it is unclear which property you have clicked on. This most commonly occurs when you are zoomed out, as you may have clicked in the vicinity of multiple properties. Zooming in before selecting your property of interest will resolve this. You can confirm which property the information relates to by ensuring that the bright blue border is appearing around your property of interest.



Figure 4

Alternatively, clicking on the white arrow in the heading of the pop-up box will cycle through the properties that have been selected (Figure 5).

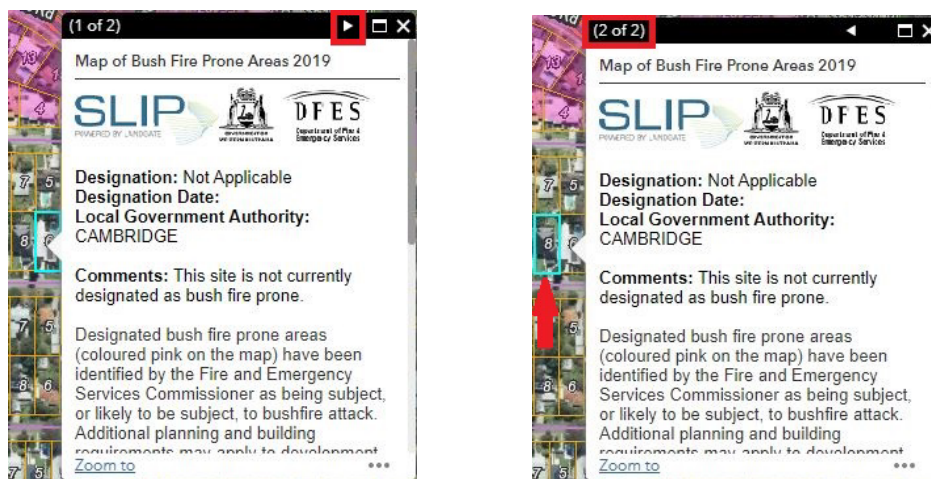


Figure 5

Areas of the Map are not loading

The Map may not draw (load) new areas properly when it has been left idle for a long time. Refresh the Map by clicking reset view or by pressing the 'F5' button.

A new property can't be found using the search function

There is a time lag between properties being created and the property street address database being updated. To find a newly created property, you could:

- Use the 'Proposed Roads' search function.
- Navigate to the location manually
- Search using GPS coordinates

More information

Further information about planning and building requirements for bush fire prone areas can be sourced from the:

- [Map of Bush Fire Prone Areas](#) website or contact bushfiremap@dfes.wa.gov.au or (08) 9395 9709.
- [Department of Planning, Lands and Heritage](#) website or contact the Bushfire Policy Officer at bushfire@dplh.wa.gov.au or (08) 6551 9000.
- [Department of Local Government, Industry Regulation and Safety](#) – Building Commission website or contact be.info@lgirs.wa.gov.au or 1300 489 099.
- Planning or building section of your local government.