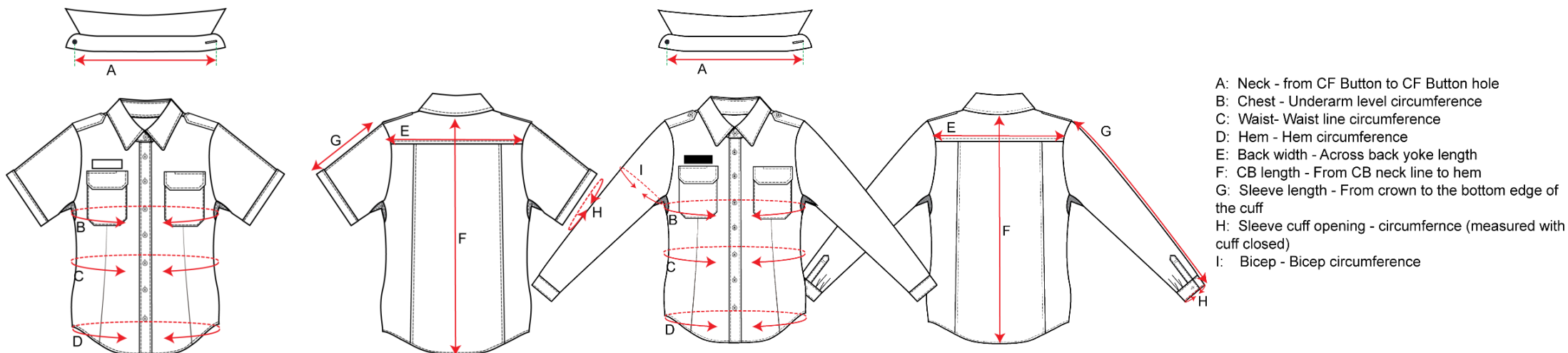


Dress of the Day Size Chart - DFES

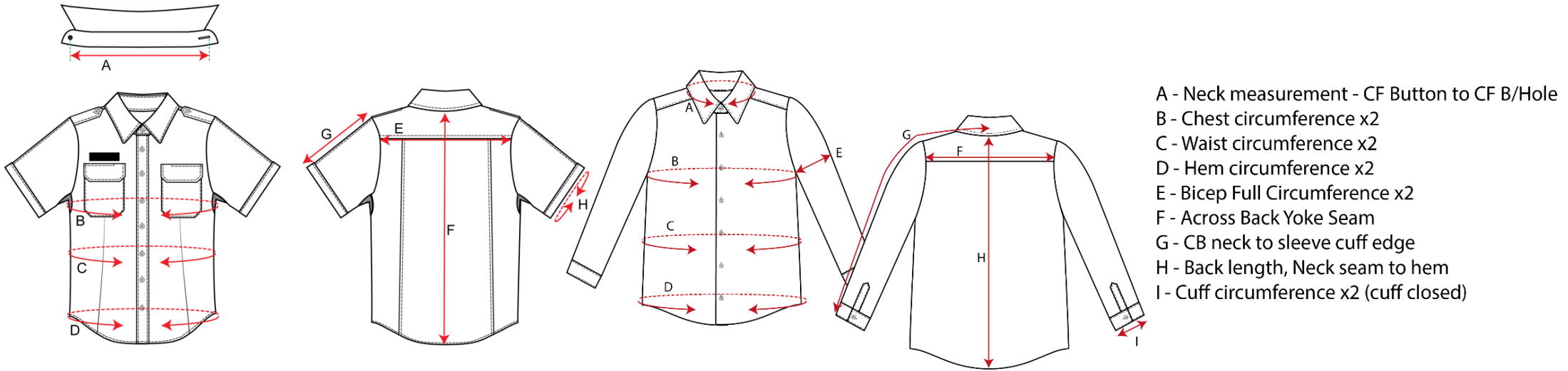
D1653 SS // D1654 LS: Female Shirts



	6	8	10	12	14	16	18	20
Neck circumference	35	36	37	38	39	40	41	42
Chest	101	106	111	116	121	126	131	136
Waist	86	91	96	101	106	111	116	121
Hem	108	113	118	123	128	133	138	143
CB length	71	72	73	74	75	76	77	78
Upper sleeve Short Sleeve	20	21	22	23	24	25	26	27
Upper Sleeve Long Sleeve	63	63.6	64.2	64.8	65.4	66	66.6	67.2

All Measurements are Finished Garment Measurements and in CM

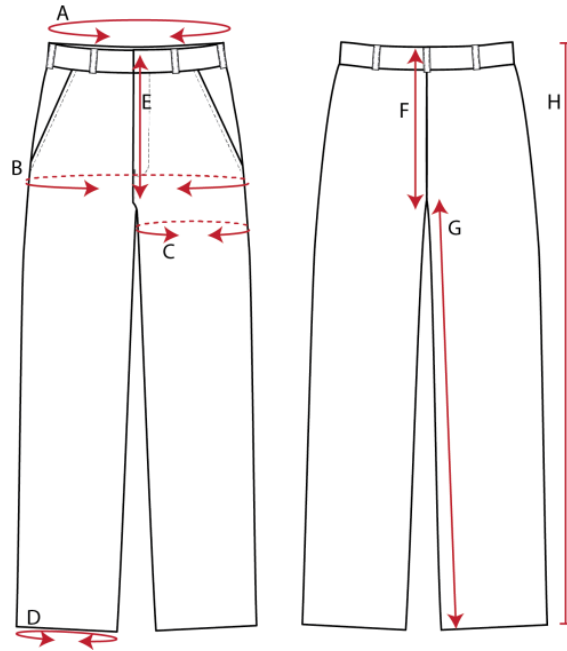
D1651 SS // D1652 LS: Male Shirts



	TOL+/-	XS	S	M	L	XL	2XL	3XL	4XL	5XL (SS ONLY)	6XL (SS ONLY)
Neck circumference	1	39	40	41	42	43	44	45	46	47	48
Chest	1	105	110	115	120	125	130	135	140	145	150
Waist	1	97	102	107	112	117	122	127	132	137	142
Hem	1	100	105	110	115	120	125	130	135	140	145
CB length	1	79	80	81	82	83	84	85	86	87	88
Upper Sleeve Short Sleeve	1	26	26.5	27	27.5	28	28.5	29	29.5	30	30.5
Upper Sleeve Long Sleeve	1	85.5	88.5	90.5	93.5	93.5	95.5	98.5	100.5		

All Measurements are Finished Garment Measurements and in CM

T830: Female Cargos

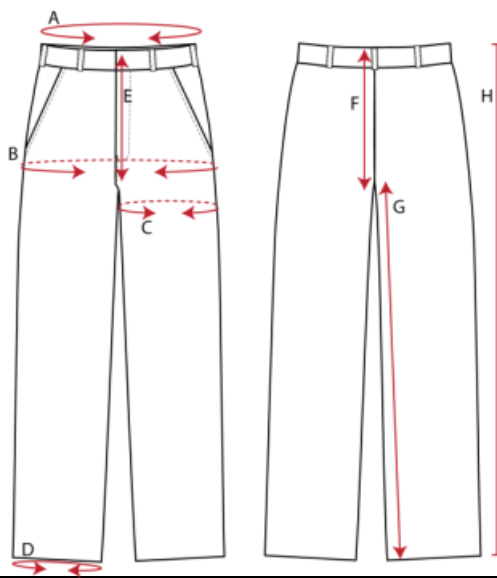


- A: Relaxed Waist** - Around waist band
- B: Seat** - 22cm below top of waist band
- C: Thigh** - At crotch level circumference
- D: Hem** - Circumference
- E: Front rise** - from Front crotch/gusset seam intersection to top of CF waist band
- F: Back rise** - From back crotch/gusset seam intersection to top of CB Waist band
- G: Inleg** - from crotch seam intersection to the hem at the inleg
- H: Out leg** - from hem to the top of the waist band at the out leg seam

Size	8	10	12	14	16	18	20	22	24
Waist	75	80	85	90	95	100	105	110	115
Seat	100	105	110	115	120	125	130	135	140
Outleg	106	106.5	109	109.5	110	110.5	112	112.5	113
Thigh	65.1	67.9	70.7	73.5	76.3	79.1	81.9	84.7	87.5

All Measurements are Finished Garment Measurements and in CM

T831: Male Cargos



- A: Relaxed Waist** - Around waist band
- B: Seat** - 20cm below waist band circumference
- C: Thigh** - At crotch level circumference
- D: Hem** - Circumference
- E: Front rise** - from crotch seam inetrsection to top of front waist band
- F: Back rise** - Front crotch seam intersection to top of back waist band
- G: inleg** - from crotch seam intersection to the hem at the inleg
- H: Out leg** - from hem to the top of the waist band at the out leg seam

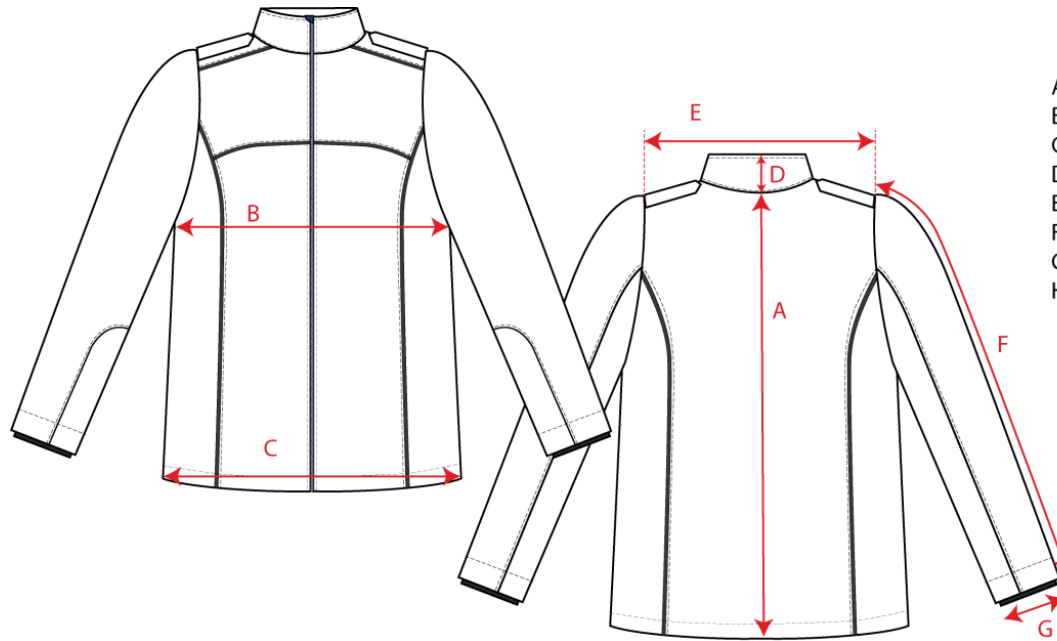
REGULAR	TOL-/+	72R	77R	82R	87R	92R	97R	102R	107R	112R	117R
Waist	2	74	79	84	89	94	99	104	109	114	119
Seat	2	96	101	106	111	116	121	126	131	136	141
Outleg	1	103	104.5	106	107.5	109	110.5	112	113.5	115	116.5
Thigh	1	60.3	63.1	65.9	68.7	71.5	74.3	77.1	79.9	82.7	85.5

SHORT	TOL-/+		77S	82S	87S	92S	97S	102S	107S	112S	117S	122S	127S	132S
Waist	2		79	84	89	94	99	104	109	114	119	124	129	134
Seat	2		101	106	111	116	121	126	131	136	141	146	151	156
Outleg	1		98.5	100	101.5	103	104.5	106	107.5	109	110.5	112	113.5	115
Thigh	1		62.9	65.7	68.5	71.3	74.1	76.9	79.7	82.5	85.3	88.1	90.9	93.7

LONG	TOL-/+	74L	79L	84L	89L	94L	99L
Waist	2	76	81	86	91	96	101
Seat	2	98	103	108	113	118	123
Outleg	1	112	113.5	115	116.5	118	119.5
Thigh	1	60.5	63.5	66.5	69.5	72.5	75.5

All Measurements are Finished Garment Measurements and in CM

J703-NVY-DFES: Soft Shell Jacket



- A) back length – from CB neck seam to hem edge
- B) Chest width – at underarm
- C) Bottom width – corner of hem to hem
- D) Collar height – at CB
- E) Shoulder width – from sleeve seam to seam
- F) Sleeve length – sleeve seam to sleeve outer hem
- G) Sleeve opening – outer sleeve opening
- H) Front pocket height – pocket opening of the side pocket

Size	2XS	XS	S	M	L	XL	2XL	3XL	4XL	5XL
Centre Back length	70	71	72	74	76	78	80	82	84	86
Chest	110	116	121	126	131	136	141	146	151	156
Bottom Hem	101	106	111	116	121	126	131	136	141	146
Shoulder to shoulder	47	48	49	50	51	52	53	54	55	56
Sleeve length including cuff	61	62	63	64	65	66	67	68	69	70

All Measurements are Finished Garment Measurements and in CM

POLO's

D1410

Sizing

LADIES	8	10	12	14	16	18	20	22	24
BUST	43.5	46	48.5	51	53.5	56	58.5	61	63.5
SP LENGTH	62	64	66	68	70	72	73	74	75



D1351

Sizing

ADULTS	2XS	XS	S	M	L	XL	2XL	3XL	4XL	5XL	6/7XL
CHEST	48.5	51	53.5	56	58.5	61	63.5	66.5	70	73.5	80.5
SP LENGTH	65	67.5	70	72.5	75	77.5	80	81	82	83	87



All Measurements are Finished Garment Measurements and in CM