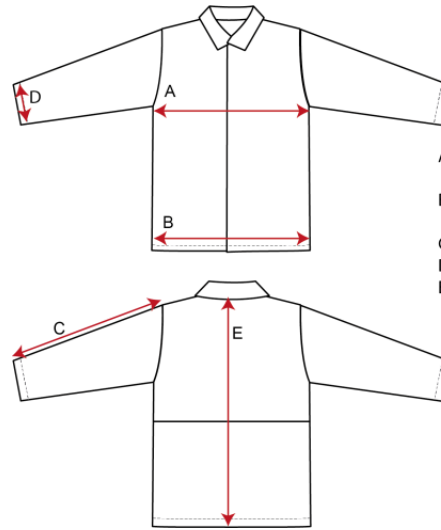


# PPC Level 1 Size Chart - WILDLANDS

## J922 : Wildland Jacket



- A: Chest - Flat measurement . x2 for full measurement.
- B: Hem- Flat measurement . x2 for full measurement.
- C: Upper sleeve - From sleeve crown to end
- D: Cuff: - Flat measure x2
- E: Back length - From CB neck line to hem

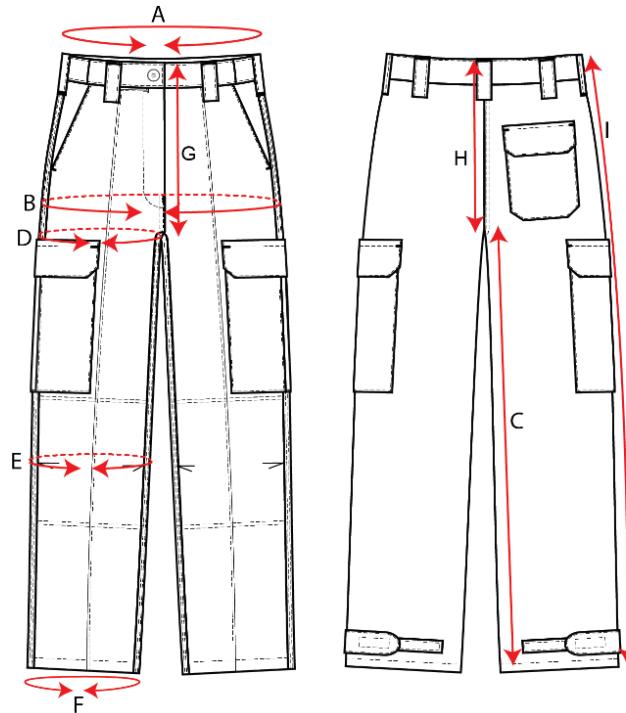
Regular	Tol +/-	3XS	2XS	XS	S	M	L	XL	2XL	3XL	4XL
Chest	2	105	110	115	120	125	130	135	140	145	150
Hem	2	115	120	125	130	135	140	145	150	155	160
Back length	1	83	84	85	86	87	87	88	88	88	88
Upper sleeve	1	60	61	62	63	64.5	66	67.5	69	70	71

Short	Tol +/-	3XS-SHORT	2XS-SHORT	XS-SHORT	S-SHORT	M-SHORT	L-SHORT	XL-SHORT	2XL-SHORT	3XL-SHORT	4XL-SHORT
Chest	2	105	110	115	120	125	130	135	140	145	150
Hem	2	115	120	125	130	135	140	145	150	155	160
Back length	1	78	79	80	81	82	82	83	83	83	83
Upper sleeve	1	55	56	57	58	59.5	61	62.5	64	65	66

Long	Tol +/-				S-LONG	M-LONG	L-LONG	XL-LONG	2XL-LONG	3XL-LONG	4XL-LONG
Chest	2				120	125	130	135	140	145	150
Hem	2				130	135	140	145	150	155	160
Back length	1				91	92	92	93.5	93.5	93.5	93.5
Upper sleeve	1				68	69.5	71	72.5	74	75	76

All Measurements are Finished Garment Measurements and in CM

**T806: Female Cargos**



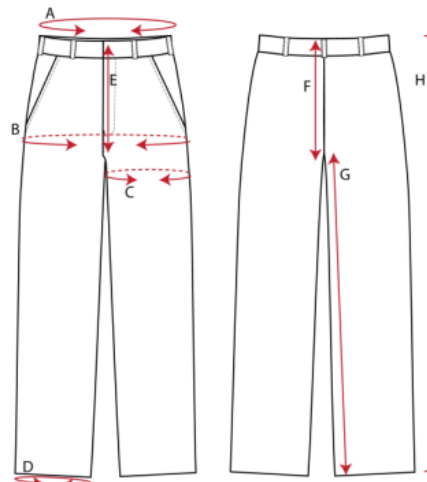
- A: Waist** - Around waist band
- B: Seat** - Hip circumference (At the base of fly)
- C: Inleg** - From crotch to hem inside the leg
- D: Thigh** - Fullest part of upper leg circumference
- E: Knee** - Halfway from crotch to hem
- F: Hem circumference**
- G: Front rise** - Top of WB to front crotch seam
- H: Back rise** - Top of WB to back crotch seam
- I: Outleg** - Top of WB to hem along outleg seam

Regular	Tol +/-	6	8	10	12	14	16	18	20	22	24	26	28	30
<b>Waist</b>	2	70	75	80	85	90	95	100	105	110	115	120	125	130
<b>Seat</b>	2	94.5	99.5	104.5	109.5	114.5	119.5	124.5	129.5	134.5	139.5	144.5	149.5	154.5
<b>Thigh</b>	1	57	59.5	62	64.5	67	69.5	72	74.5	77	79.5	82	84.5	87
<b>Outleg</b>	1	105.5	107	107.5	109	110	112	113	115	116	117	118	119	120

Short	Tol +/-	6S	8S	10S	12S	14S	16S	18S	20S	22S	24S	26S	28S	30S
<b>Waist</b>	2	70	75	80	85	90	95	100	105	110	115	120	125	130
<b>Seat</b>	2	94.5	99.5	104.5	109.5	114.5	119.5	124.5	129.5	134.5	139.5	144.5	149.5	154.5
<b>Thigh</b>	1	57	59.5	62	64.5	67	69.5	72	74.5	77	79.5	82	84.5	87
<b>Outleg</b>	1	101.5	103	103.5	105	106	108	109	111	112	113	114	115	116

All Measurements are Finished Garment Measurements and in CM

**T243-PB1-PRT: Male Cargo**



- A: Relaxed Waist** - Around waist band
- B: Seat** - 20cm below waist band circumference
- C: Thigh** - At crotch level circumference
- D: Hem** - Circumference
- E: Front rise** - from crotch seam intersection to top of front waist band
- F: Back rise** - from front crotch seam intersection to top of back waist band
- G: inleg** - from crotch seam intersection to the hem at the inleg
- H: Out leg** - from hem to the top of the waist band at the out leg seam

Regular	72R	77R	82R	87R	92R	97R	102R	107R	112R	117R
Waist	72	77	82	87	92	97	102	107	112	117
Seat	102	102	108	115	120	123	127	131	136	141
Outleg	101	103	107	109	112	115	117	118	119	120
Thigh at Crotch	60.0	62.0	65.5	69.5	72.5	75.5	78.5	81.5	84.5	87.5

Short		77S	82S	87S	92S	97S	102S	107S	112S	117S	122S	S127	S132
Waist		77	82	87	92	97	102	107	112	117	122	127	132
Seat		96	104	108	114	120	122	126	130	134	138	142	146
Outleg		100	100	100	102	106	108	110	112	114	116	118	120
Thigh at Crotch		60.0	64.0	67.0	70.5	73.5	76.0	79.0	82.0	85.0	88.0	91.0	94.0

Long		79L	84L	89L	94L
Waist		79	84	89	94
Seat		104	110	112	117
Outleg		110	113	115	119
Thigh at Crotch		61.5	64.5	67.5	71.0

All Measurements are Finished Garment Measurements and in CM