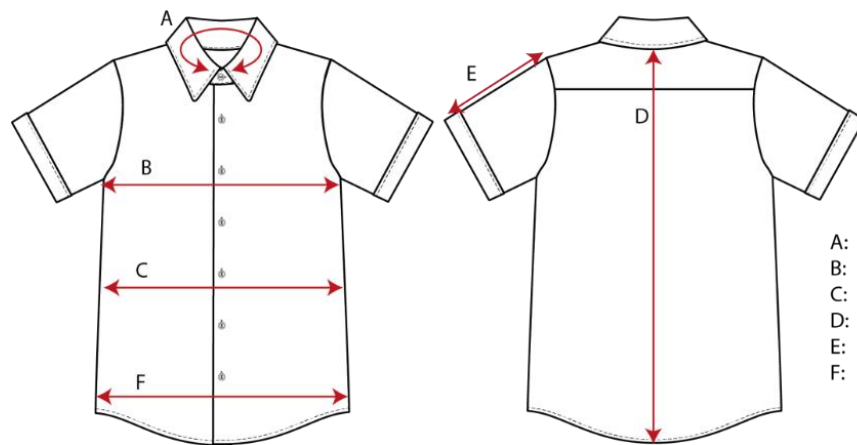


Dress of the Day Size Chart - CFRS

D1298 Maternity Shirt

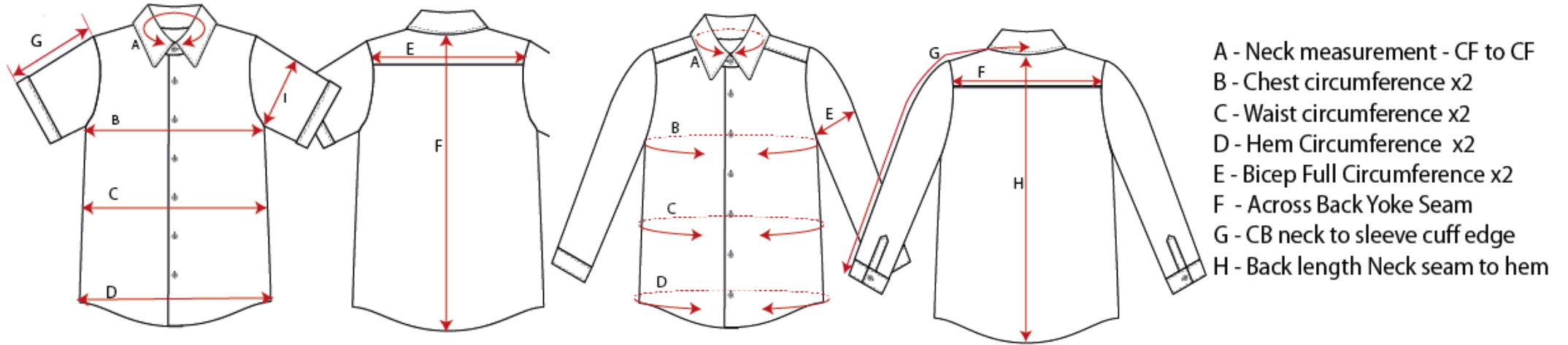


- A: Neck - from CF to CF along the seam line.
- B: Chest - Flat measurement . x2
- C: Waist- Flat measure at waist line. X 2
- D: Back length - From CB neck line to hem.
- E: Sleeve length - from crown to the cuff edge
- F: Hem - Flat measure at hem. X2

Size	6	8	10	12	14	16
Chest	98	103	108	113	118	123
Waist	91	96	101	106	111	116
Hem	111	116	121	126	131	136
CB Length	67.2	67.8	68.4	69	69.6	70.2
Upper Sleeve	19.7	20.3	20.9	21.5	22.1	22.7

All Measurements are Finished Garment Measurements and in CM

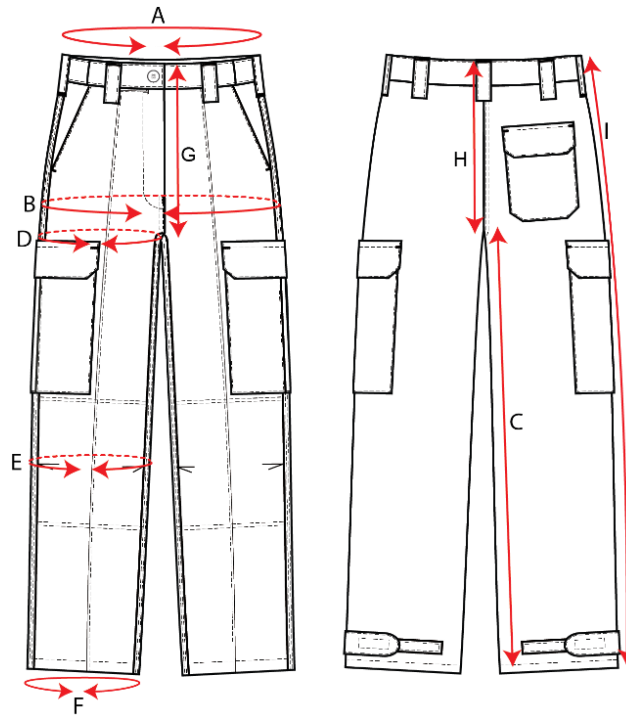
D430 SS // D431 LS Operational shirt



Size	32/33	34/35	36/37	38/39	41/42	43/44	45/46	47/48	49/50	51/52
Neck	33	35	37	39	42	44	46	48	50	52
Chest	103	109	115	121	127	133	141	149	157	165
Waist	97	103	109	115	121	127	135	143	151	159
Hem	102	108	114	120	126	132	140	148	156	164
Back Length	83.5	83.5	83.5	83.5	85.5	87.5	89.5	89.5	92	92
Sleeve Upper Short Sleeve	24	24.5	25	25.5	26	26.5	27	27.5	28	28.5
Sleeve Upper Long Sleeve	79	81	84	86	89	89	91	94	96	96
Bicep	43	45	47	49	51	53	55	57	59	61

All Measurements are Finished Garment Measurements and in CM

T806: Female Cargos



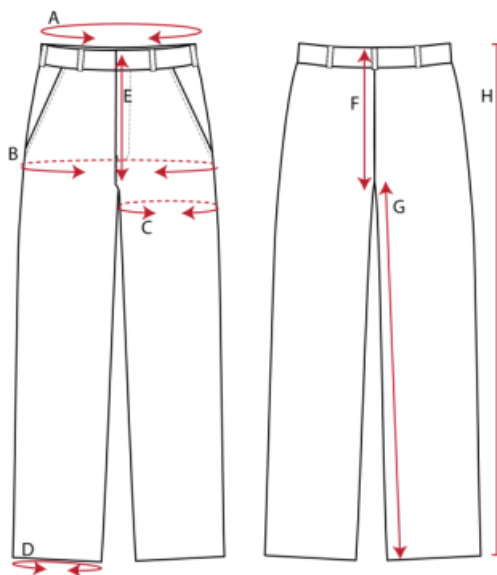
- A: **Waist** - Around waist band
- B: **Seat** - Hip circumference (At the base of fly)
- C: **Inleg** - From crotch to hem inside the leg
- D: **Thigh** - Fullest part of upper leg circumference
- E: **Knee** - Halfway from crotch to hem
- F: **Hem circumference**
- G: **Front rise** - Top of WB to front crotch seam
- H: **Back rise** - Top of WB to back crotch seam
- I: **Outleg** - Top of WB to hem along outleg seam

Regular	Tol +/-	6	8	10	12	14	16	18	20	22	24	26	28	30
Waist	2	70	75	80	85	90	95	100	105	110	115	120	125	130
Seat	2	94.5	99.5	104.5	109.5	114.5	119.5	124.5	129.5	134.5	139.5	144.5	149.5	154.5
Thigh	1	57	59.5	62	64.5	67	69.5	72	74.5	77	79.5	82	84.5	87
Outleg	1	105.5	107	107.5	109	110	112	113	115	116	117	118	119	120

Short	Tol +/-	6S	8S	10S	12S	14S	16S	18S	20S	22S	24S	26S	28S	30S
Waist	2	70	75	80	85	90	95	100	105	110	115	120	125	130
Seat	2	94.5	99.5	104.5	109.5	114.5	119.5	124.5	129.5	134.5	139.5	144.5	149.5	154.5
Thigh	1	57	59.5	62	64.5	67	69.5	72	74.5	77	79.5	82	84.5	87
Outleg	1	101.5	103	103.5	105	106	108	109	111	112	113	114	115	116

All Measurements are Finished Garment Measurements and in CM

T243-PB1-PRT: Male Cargos



- A: Relaxed Waist** - Around waist band
- B: Seat** - 20cm below waist band circumference
- C: Thigh** - At crotch level circumference
- D: Hem** - Circumference
- E: Front rise** - from crotch seam inetrsection to top of front waist band
- F: Back rise** - Front crotch seam intersection to top of back waist band
- G: inleg** - from crotch seam intersection to the hem at the inleg
- H: Out leg** - from hem to the top of the waist band at the out leg seam

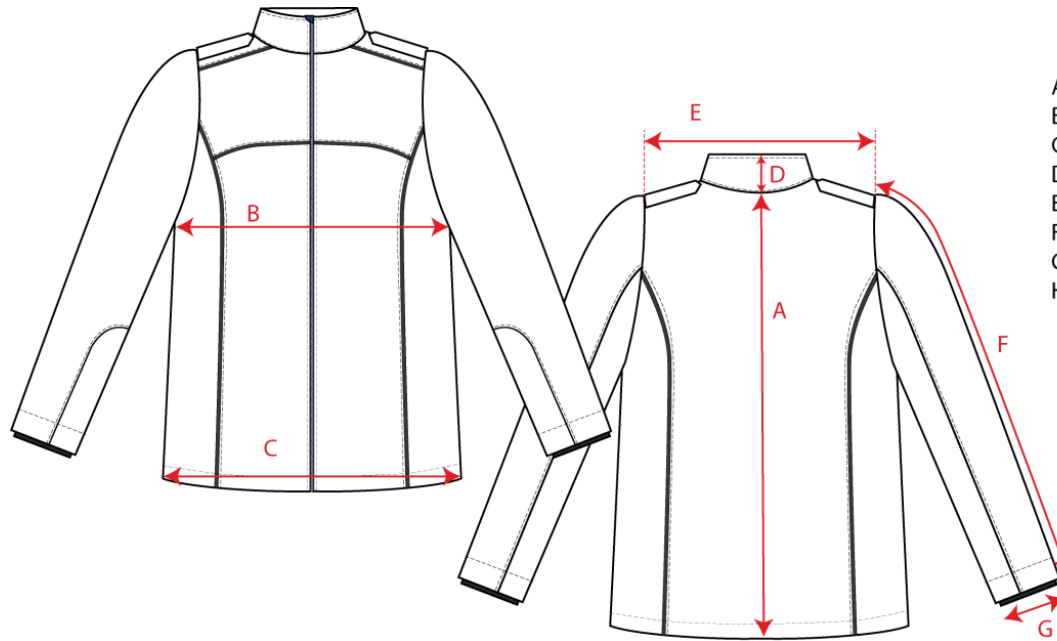
Regular	72R	77R	82R	87R	92R	97R	102R	107R	112R	117R
Waist	72	77	82	87	92	97	102	107	112	117
Seat	102	102	108	115	120	123	127	131	136	141
Outleg	101	103	107	109	112	115	117	118	119	120
Thigh at Crotch	60.0	62.0	65.5	69.5	72.5	75.5	78.5	81.5	84.5	87.5

Short		77S	82S	87S	92S	97S	102S	107S	112S	117S	122S	S127	S132
Waist		77	82	87	92	97	102	107	112	117	122	127	132
Seat		96	104	108	114	120	122	126	130	134	138	142	146
Outleg		100	100	100	102	106	108	110	112	114	116	118	120
Thigh at Crotch		60.0	64.0	67.0	70.5	73.5	76.0	79.0	82.0	85.0	88.0	91.0	94.0

Long		79L	84L	89L	94L
Waist		79	84	89	94
Seat		104	110	112	117
Outleg		110	113	115	119
Thigh at Crotch		61.5	64.5	67.5	71.0

All Measurements are Finished Garment Measurements and in CM

J703-NVY-CFRS: Soft Shell Jacket

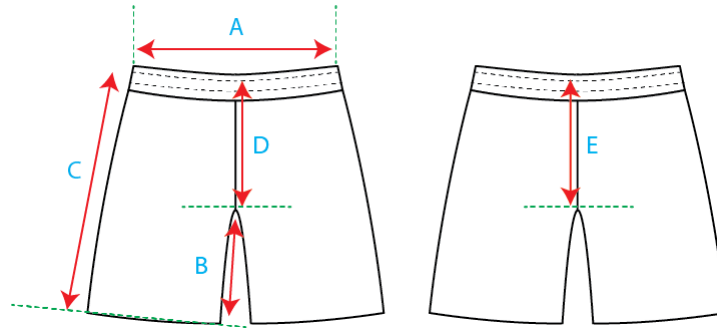


- A) back length – from CB neck seam to hem edge
- B) Chest width – at underarm
- C) Bottom width – corner of hem to hem
- D) Collar height – at CB
- E) Shoulder width – from sleeve seam to seam
- F) Sleeve length – sleeve seam to sleeve outer hem
- G) Sleeve opening – outer sleeve opening
- H) Front pocket height – pocket opening of the side pocket

Size	2XS	XS	S	M	L	XL	2XL	3XL	4XL	5XL
Centre Back length	70	71	72	74	76	78	80	82	84	86
Chest	110	116	121	126	131	136	141	146	151	156
Bottom Hem	101	106	111	116	121	126	131	136	141	146
Shoulder to shoulder	47	48	49	50	51	52	53	54	55	56
Sleeve length including cuff	61	62	63	64	65	66	67	68	69	70

All Measurements are Finished Garment Measurements and in CM

S218-PB1: Modesty Short, Long with Pockets

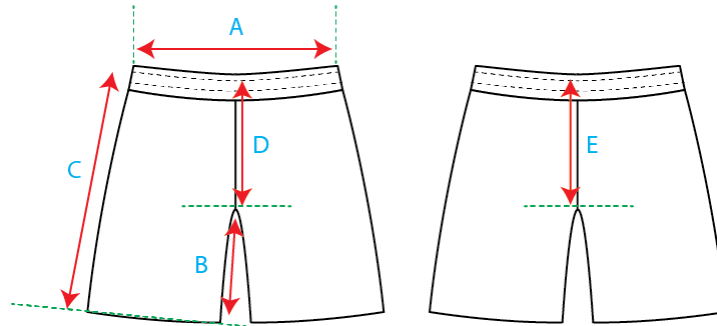


- A) **Waist Band** – Relaxed and Flat lay (2x for circumference)
- B) **In Leg** – From crotch seam intersection to the hem at the in leg.
- C) **Out Leg** – From the hem to the top of the waist band on the out-leg seam.
- D) **Front Rise** – From crotch seam intersection to Top of front waist band.
- E) **Back Rise** – From Crotch seam intersection to Top of back waist band.

SIZE	2XS	XS	S	M	L	XL	2XL	3XL
		8	10	12	14	16	18	20
Waistband (relaxed)	58	62	66	70	74	78	82	86
Inleg	18	19	20	21	22	23	24	25
Outleg	44	45.5	47	48.5	50	51.5	53	54.5
Front Rise	29.5	30	30.5	31	31.5	32	32.5	33
Back Rise	33.5	34	34.5	35	35.5	36	36.5	37

All Measurements are Finished Garment Measurements and in CM

S219-PB1: Modesty Short, Short Slim Fit (No Pockets)

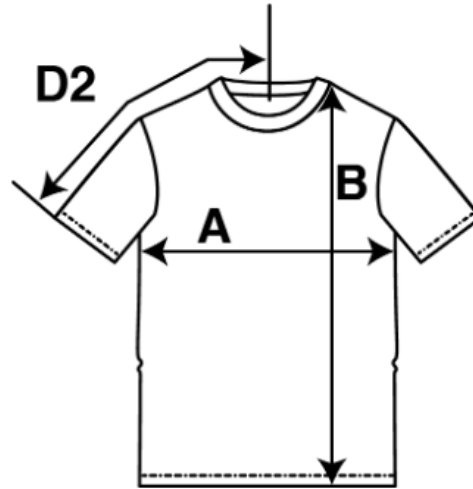


- A) **Waist Band** – Relaxed and Flat lay (2x for circumference)
- B) **In Leg** – From crotch seam intersection to the hem at the in leg.
- C) **Out Leg** – From the hem to the top of the waist band on the out-leg seam.
- D) **Front Rise** – From crotch seam intersection to Top of front waist band.
- E) **Back Rise** – From Crotch seam intersection to Top of back waist band.

SIZE	2XS	XS	S	M	L	XL	2XL	3XL
	8	10	12	14	16	18	20	22
Waistband (relaxed)	58	62	66	70	74	78	82	86
Inleg	12	13	14	15	16	17	18	19
Outleg	37.5	39	40.5	42	43.5	45	46.5	48
Front Rise	29.5	30	30.5	31	31.5	32	32.5	33
Back Rise	33.5	34	34.5	35	35.5	36	36.5	37

All Measurements are Finished Garment Measurements and in CM

D1563-FRS1: Female Soft Style T Shirts

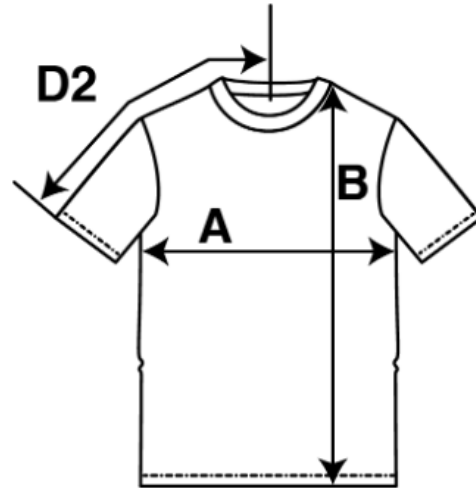


- A) **Chest** – Flat Lay (2x for circumference)
- B) **Length** – Top of shirt collar to bottom hem
- D2) **Upper Sleeve length** – From CB neck to top of sleeve hem

Size	S	M	L	XL	2XL	3XL
Chest	43	46	50	52	58	62
Length	64	66	69	70	71	72
Upper Sleeve length	29	30	32	34	36	38

All Measurements are Finished Garment Measurements and in CM

D1551-FRS1: Male Soft Style T Shirts

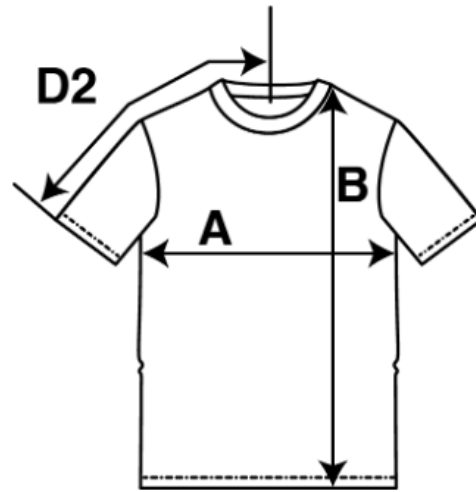


- A) **Chest** – Flat Lay (2x for circumference)
- B) **Length** – Top of shirt collar to bottom hem
- D2) **Upper Sleeve length** – From CB neck to top of sleeve hem

Size	XS	S	M	L	XL	2XL	3XL	4XL	5XL
Chest	41	46	51	56	61	66	71	76	81
Length	67	71	74	77	79	83	85	86	89
Upper Sleeve length	41	44	46	50	53	55	58	61	64

All Measurements are Finished Garment Measurements and in CM

D441-FRS: Male T Shirts



- C) **Chest** – Flat Lay (2x for circumference)
- D) **Length** – Top of shirt collar to bottom hem

D2) **Upper Sleeve length** – From CB neck to top of sleeve hem

Size	S	M	L	XL	2XL	3XL	4XL	5XL
Chest	46	51	56	61	66	71	76	81
Length	71	74	76	79	81	84	86	89
Upper Sleeve length	40	43	47	51	55	58	62	64

All Measurements are Finished Garment Measurements and in CM