

[View this email in your browser](#)



June Garden Tasks



1. Planting & Transplanting (Warm Season)

- **Finalize Transplants:** It is the ideal time to finish planting tender annuals, herbs, and vegetables like tomatoes, peppers, eggplants, cucumbers, and zucchini.

- **Direct Seeding:** Soil is fully warm, allowing direct sowing of bush beans, pole beans, carrots, beets, corn, and summer squash.
- **Succession Planting:** Replant areas where spring greens (lettuce, spinach, radishes) have already been harvested to maintain a continuous supply!



2. Garden Maintenance & Care

- **Mulching:** Apply 2 inches of mulch around new transplants to conserve moisture, regulate soil temperature, and suppress weeds.
- **Watering:** Water early in the morning to reduce evaporation. Focus on deep, infrequent watering to encourage strong root systems rather than daily shallow watering.
- **Staking & Trellising:** Install tomato cages, trellises for cucumbers, and stakes for tall perennials like

delphiniums to prevent damage from June storms.

- **Deadheading:** Remove faded blooms on spring-flowering perennials and shrubs to encourage a second flush of flowers.



3. Pest & Disease Watch

- **Cutworms & Aphids:** Scout daily for early-season pests, particularly aphids on new foliage and cutworms at the base of seedlings.
- **Slugs:** Watch for slug damage in damp, shady areas.
- **Invasive Species:** Monitor for Box tree moth and moth caterpillars.
- **Disease Management:** Ensure proper airflow to prevent powdery mildew on vine crops and phlox.



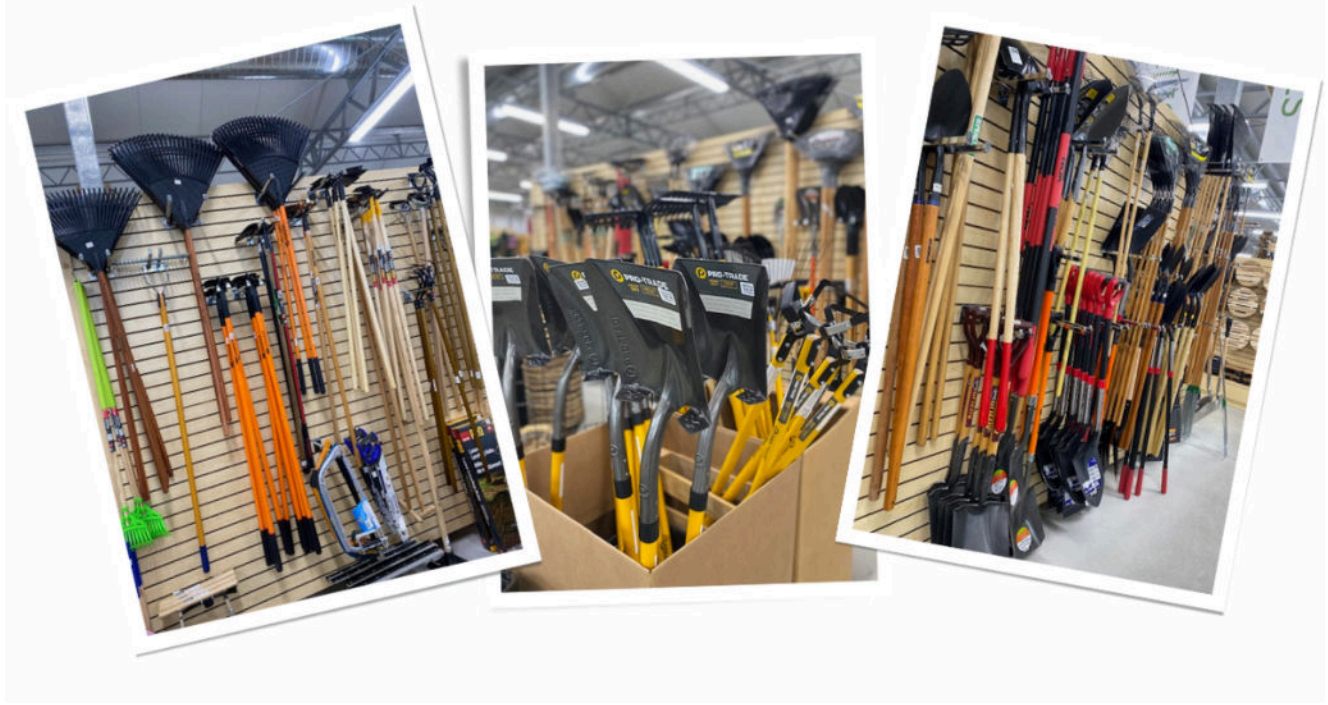
4. Southwest Ontario Focus - Zone 6B

- **Herb Harvest:** Early herbs like cilantro and parsley are ready for regular harvesting to prevent bolting.
- **Shrub Pruning:** Prune spring-blooming shrubs (lilac, forsythia) immediately *after* they finish flowering.
- **Lawn Care:** Raise the lawnmower blade to prevent burning and leave clippings as "green" fertilizer.



From Tools to Irrigation Supplies, We've Got Everything You Need!

We carry specialized tools you won't find at big box stores—and we're here to help you know exactly what you need and how to use it.



New Hours

OPEN Monday to Saturday 8am-6pm



Copyright (C) 2026 Sipkens Nurseries Ltd. All rights reserved.

Our mailing address is:

3261 London Line, Wyoming, Ontario, N0N 1T0

Want to change how you receive these emails?
You can [update your preferences](#) or [unsubscribe](#)