

YOUNIGHT
HOSPITALITY

Company brochure

Investing in exceptional moments.



Summary

- 01. Manifesto Page 03
- 02. Values Page 04
- 03. Key figures Page 05
- 04. Achievements Page 06



Maisons du Monde Hôtel & Suites La Rochelle



MANIFESTO

Younight Hospitality

Like the jeweller who creates one-of-a-kind pieces, we shape each hotel project like a craftsman. From the hotel concept to the arrival of the first guest, from the decoration to the choice of the local master baker, we modernise hotel standards to breathe new life into the sector. No two hotels are the same, but there's one thing they all have in common: inspiration. The richness of a hotel lies in its ability to inspire, to make people dream, to tell a story and to embody it.

Our story is never written in advance. Every hotel is different, every project unique. Our expertise, our know-how and the tools we deploy enable us to provide tailor-made support and an innovative, attractive and exclusive offering. Our approach is constantly evolving to meet the expectations of an increasingly demanding clientele and offer them a personalised, digital and connected, sustainable and responsible experience.

Our history is in tune with the times. The environmental, social and technological aspects are strong markers of our identity. We believe in the unlimited potential of artificial intelligence. We put these powerful tools at the service of our partners to optimise the customer experience and improve efficiency and effectiveness. AI is an excellent complement, but it will never replace the human touch.

Our history has grown out of an unshakeable conviction: putting people at the heart of everything we do. In an age of hyper-digitalisation and a constantly changing environment, this is the point at which we focus all our values. It's people who make the difference. It's the attention to detail, the personalised welcome, the proactive listening, the sincerity of a smile, the relevance of the right word at the right time, it's authenticity, empathy and kindness, the right proximity and sense of service to make everyone feel like an exceptional guest.

Our history is an ecosystem of committed business experts. Together, we do more than bring a hotel to life: we bring it to life, we help it to evolve, and we help it to shine, just like the regions we highlight.

Values

Create Invent Surprise

At Younight Hospitality, we innovate to breathe new life into hotel standards. A unique identity, an atypical experience, singular details: we tailor-make your hotel project.

Precision Rigour, Commitment

We love details: in the design of visionary projects and in the day-to-day running of a hotel. This management is underlined and accompanied by technologies adapted to our hotels and our teams. Our approach is constantly evolving to meet the expectations of an increasingly demanding clientele and offer them a personalised, digital and connected experience that is sustainable and responsible.

Reveal the soul of the place, and take care of the little details

We awaken the art of hospitality. We energise your vision of hospitality. What your guests will say about your hotel: 'Here, I live a unique moment, an unforgettable experience'.



Key figures

20 Hotels from 2 to 5 stars

45 Apartments with hotel services

12 Geographical locations

+20 Head office staff at your service

+400k Customers welcomed in 2023



Maisons du Monde Hôtel & Suites Marsette

4 establishments

- Balthazar Hôtel & Spa *****
- Nemours Hôtel & Appartements ***
- Campanile Rennes Centre Gare ***
- Hôtel Lanjuinais **



Balthazar Hôtel & Spa ****

Located in the heart of Rennes, the Balthazar Hôtel & Spa boasts a prime location just a stone's throw from the former Parliament of Brittany.

The hotel is housed in two beautiful city centre buildings that have been transformed into an elegant hotel full of character. La Table de Balthazar will immerse you in an exceptional gastronomic experience where creative cuisine meets exquisite flavours.

Brand :

MGallery Hôtel Collection

Features:

- 56 rooms including 16 twins | Categories: Classic, Superior, Deluxe, Junior Suite with terrace overlooking the city.
- 7 suites-apartments
- Nuxe Spa
- Bar
- Gourmet restaurant
- Meeting rooms

Room sizes:

From 12 to 20 m² | Up to 2 people

Suites-apartments sizes:

From 40 to 95m² | Up to 4 people

Meeting rooms:

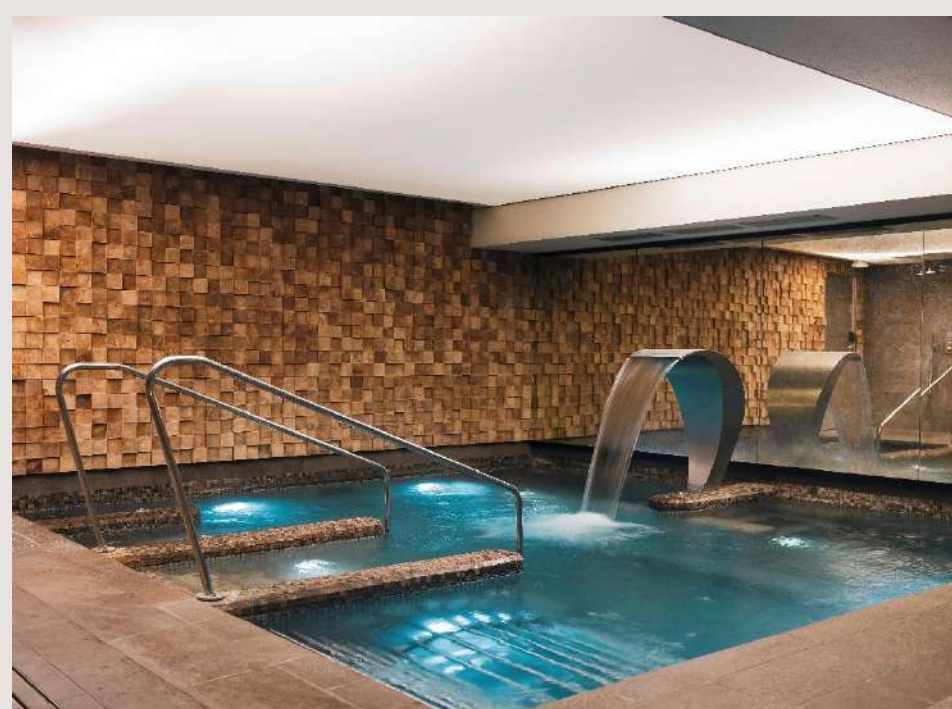
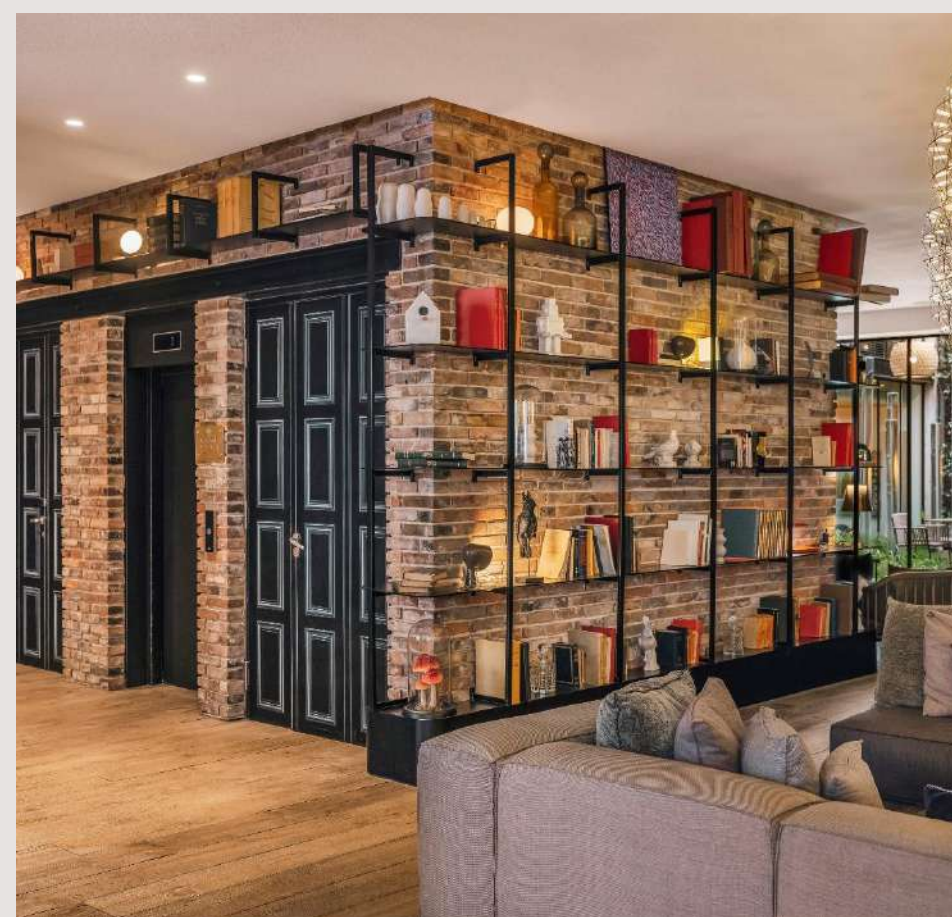
- Salon Gaspard: 60m² and 45 people
- Salon Balthazar: 30m² and 20 people

Accessibility:

- Rennes Saint-Jacques airport: 15 min by car
- Rennes TGV station: 15 min walk, 8 min drive

WEBSITE

RENNES



Nemours Hôtel & Appartements***

Located in the historic center of Rennes, the fully renovated Nemours Hôtel & Appartements offers 41 rooms and 10 flats. With its personalised welcome and tasteful decor, you'll feel right at home! Ideally located in the center of Rennes, the Nemours Hôtel & Appartements welcomes both business travellers and tourists.

Brand:

Independent hotel

Features:

- 41 rooms including 15 twins | Categories : Cosy, Comfort, Privilege, Family
- 10 apartments

Room sizes:

From 12 to 20 m² | Up to 2 people

Apartment sizes:

From 25 to 45m² | Up to 4 people

Accessibility:

- Rennes Saint-Jacques airport: 15 min by car
- Rennes TGV station: 15 min walk, 5 min drive

WEBSITE

RENNES



Campanile Rennes Centre Gare***

Right next to the train and bus stations, the Campanile Rennes Centre Gare is perfectly located. Everything is within walking distance of the hotel: the city center, the 'Le Liberté' theatre and the Champs Libres cultural center. After a day of sightseeing, the bar area is the perfect place to relax.

Brand:

Campanile, Louvre Hôtel Group

Features:

64 rooms including 25 twins | Category: Standard

- Bar
- Meeting room

Room sizes:

18m² | Up to 3 people

Meeting room:

49m² | Up to 45 people

Accessibility:

- Rennes Saint-Jacques airport: 15 min by car
- Rennes TGV station: 2 minutes' walk



Hôtel Lanjuinais**

An independent boutique hotel, Hôtel Lanjuinais offers comfortable, quiet rooms. Just a 10-minute walk from the station, 200 metres from the metro and a short walk from the majestic Place de la République, the Hôtel Lanjuinais offers a car-free stay.

Brand:

Independent hotel

Features:

- 38 bedrooms including 5 twins | Categories : Cosy, Comfort, Privilege, Family
- 1 apartment

Room sizes:

From 10 to 28 m² | Up to 4 people

Apartment size:

60 m² | Up to 4 people

Accessibility:

- Rennes Saint-Jacques airport: 15 min by car
- Rennes TGV station: 17 min on foot, 5 min by car

WEBSITE

RENNES



2 establishments

- Solly Hôtel Paris ****
- Niepce Paris Hôtel ****



Solly Hôtel Paris****

The Solly Hotel Paris is a hybrid between a guest house and a Parisian hotel. It pays homage to the great traveler and architect Salomon de Caus, who infused the entire house with an inquisitive, creative and open-minded spirit.

Brand:

Independent Hotel

Features:

51 rooms including 7 twins | Categories : Comfort, Comfort park view, Comfort park view with balcony, Comfort with terrace, Cosy Eiffel Tower view, Cosy Eiffel Tower view with balcony, Junior Suite park view with balcony, Suite.
- Meeting room

Room sizes:

From 14 to 35.5m² | Up to 4 people

Meeting room:

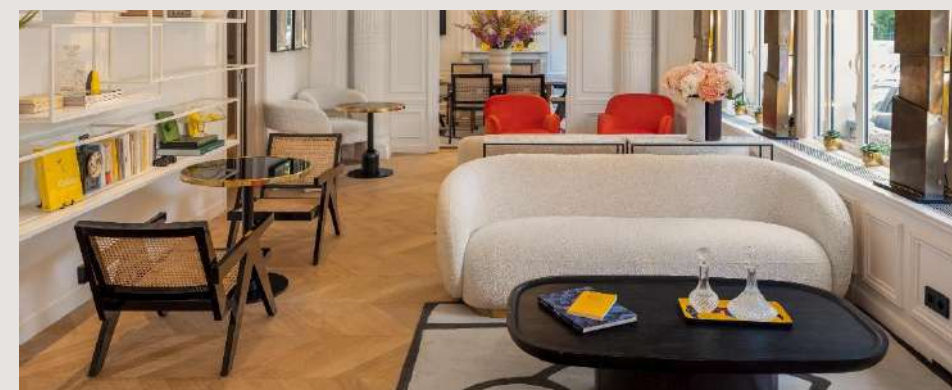
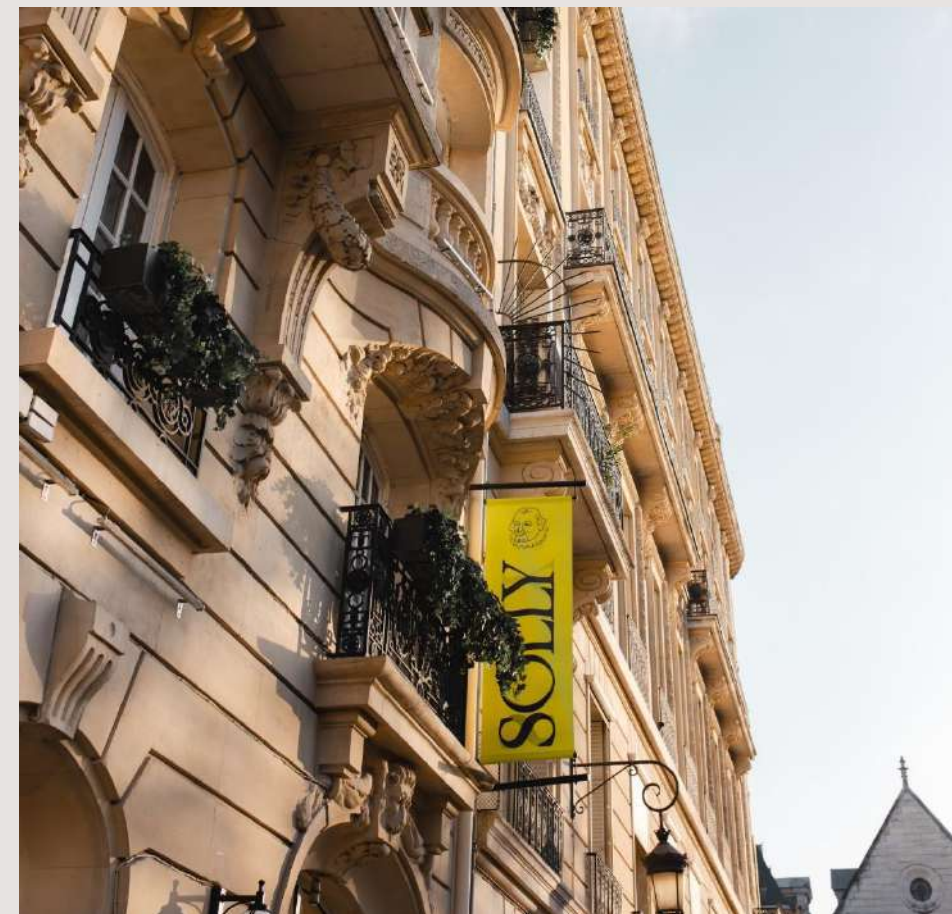
12m² | 8 people

Accessibility:

- Nearest metro station: Réaumur Sébastopol - 1 min away
- CDG airport: RER B to Gare du Nord + line 4 to Réaumur Sébastopol - 45 min
- Orly airport: Orly bus to Denfert Rochereau + line 4 to Réaumur Sébastopol - 60 min

WEBSITE

PARIS



Niepce Paris Hôtel****

Located in the heart of the Montparnasse district in the 14th arrondissement of Paris, the Hotel Niepce Paris Curio Collection by Hilton has 52 rooms and suites. It reflects the French art of living and is in keeping with the artistic continuity of the district. The décor, freely inspired by photographic works, pays particular attention to portraits of women. The La Verrière Paris restaurant is set in a refined contemporary décor bathed in natural light, inviting guests on a culinary journey through reinvented flavours.

Brand :

Curio Collection by Hilton

Features :

52 rooms | Categories : Standard, Privilège, Junior suite, Suite duplex
- Meeting room
- La Verrière lounge bar
- La Verrière restaurant

Room sizes :

De 15 à 69m² | Jusqu'à 4 personnes

Meeting room :

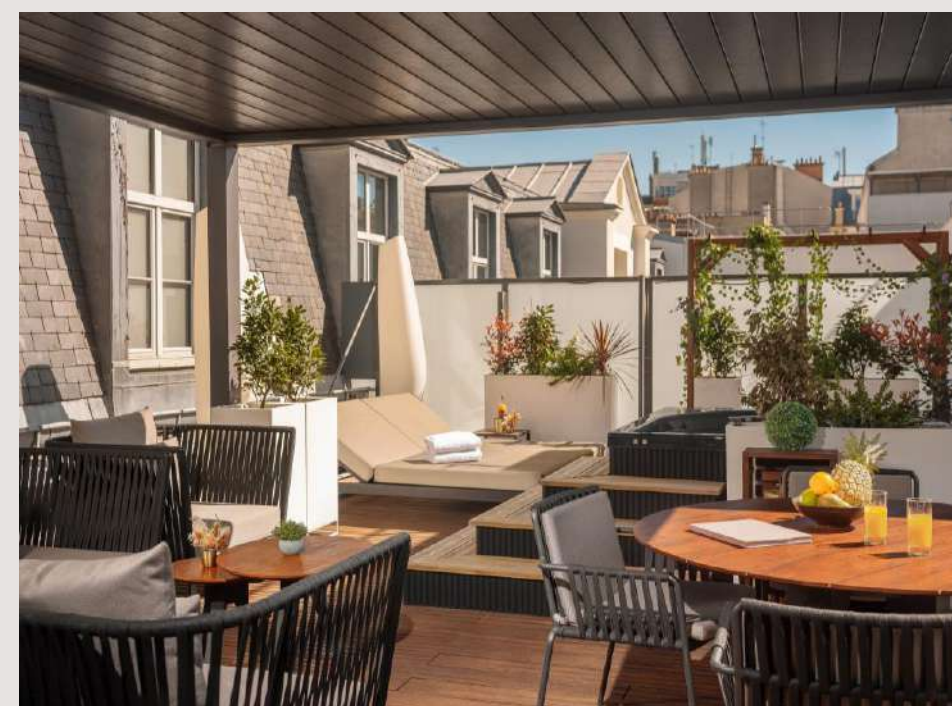
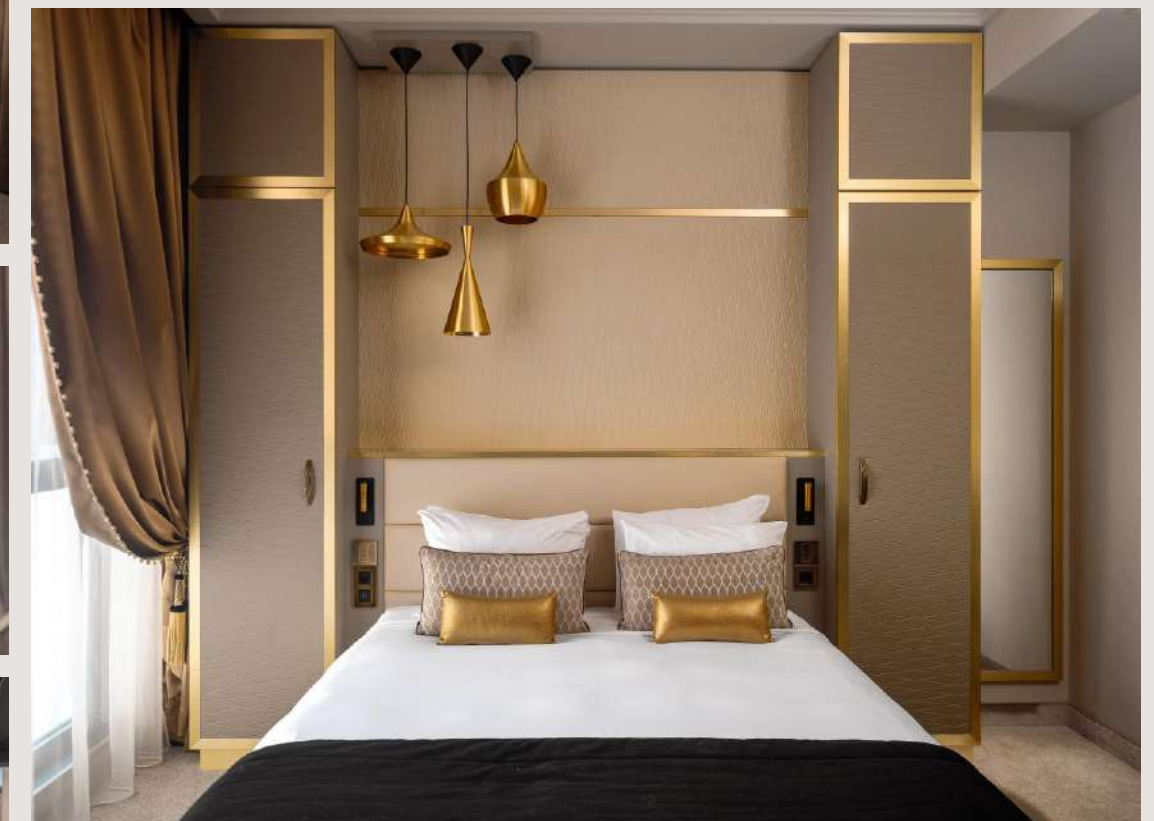
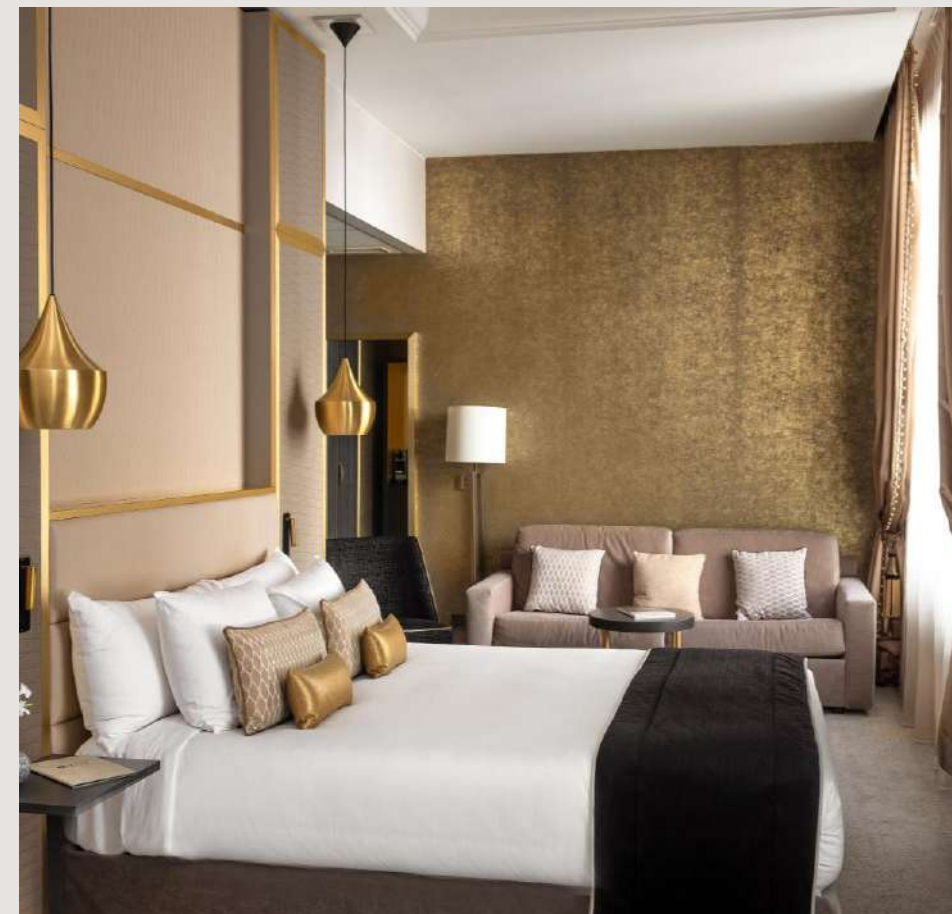
- Salon Montparnasse: 40m² and 16 people
- Restaurant La Verrière: 180m² - 80 people seated and 150 for cocktails

Accessibility :

- Nearest metro station: PernetyMontparnasse station: 900 m - 10 min walk
- Orly airport: Line 14 to Saint-Lazare + line 13 to Pernety - 52 minutes
- Charles de Gaulle (CDG) airport: RoissyBus line to Opéra + line 8 to Les Invalides + line 13 to Pernety - 1h30

WEBSITE

PARIS



3 establishments

- Maisons du Monde Hôtel & Suites Nantes ****
- Billie Hôtel ***
- Chachacha Hôtel ***



Maisons du Monde Hôtel & Suites Nantes****

Immerse yourself in the enchanting world of Maisons du Monde Hôtel & Suites Nantes, where every stay becomes an artistic escapade. Inspired by design and cultural diversity, our establishment offers elegant and unique rooms, furnished with an attention to detail that evokes the eclectic spirit of Maisons du Monde.

Brand:

Maisons du Monde Hôtel & Suites

Features:

- 47 rooms including 11 twins | Categories : Cosy, Comfort, Deluxe
- 11 suites-apartments

Room sizes:

From 14 to 18m² | For up to 4 people

Suites-apartments sizes:

From 30 to 65m² | Up to 6 people

Accessibility:

- Nantes Atlantique airport: 25 min by car
- SNCF station: 25 min on foot, 7 min by car

WEBSITE

NANTES



Billie Hôtel***

In the beating heart of Nantes, you have an appointment in the home of an exceptional host. Discover Billie. Secret and flamboyant, it is the image of a timeless hotel.

As part of the Voyage à Nantes 'Artists Rooms' initiative, Japanese artist Makiko Furuichi has taken over room 435 at the Billie and turned it into a real work of art, called Dream Jungle.

Brand:

Independent hotel

Features:

49 rooms including 8 twins | Categories: Cosy, Comfort, Comfort Triple, Family Comfort
- Meeting room

Room sizes:

From 13 to 23m² | Up to 4 people

Meeting room:

28m² | 15 people

Accessibility:

- Nantes Atlantique airport: 20 min by car
- SNCF station: 29 min on foot, 12 min by car

WEBSITE

NANTES



Chachacha Hôtel***

Ideally located just a stone's throw from the station, Le Chachacha is the perfect base from which to explore the city, stroll through the historic centre or vibrate to the cultural rhythms of Nantes. Like a chase into the unknown, it invites you to see travel differently, to marvel and reinvent your view of the world.

Brand :

Independent hotel

Features :

60 rooms

Room sizes :

From 12 to 17m²

Accessibility :

- Nantes Atlantique airport: 20 min by car
- SNCF train station: 2 min walk

WEBSITE

NANTES



1 establishment

- Maisons du Monde Hôtel & Suites Marseille ****



Maisons du Monde Hôtel & Suites Marseille****

Maisons du Monde Hôtel & Suites Marseille combines friendliness, service and elegance. The atmosphere and styles are varied. The hotel is ideally located on the Old Port and is the starting point for a host of escapades.

Brand:

Maisons du Monde Hotel & Suites

Features:

- 63 rooms including 14 twins | Categories: Cosy, Comfort, Deluxe, Deluxe Vieux-Port, Junior Suite, Junior
- 16 suites-apartments

Room sizes:

From 15 to 40m² | Up to 4 people

Suites-apartments sizes:

From 37 to 75m² | Up to 6 people

Accessibility:

- Nearest metro station: Vieux-Port
- Marseille Provence airport: 30 min by car
- Marseille Saint-Charles train station: 10 min by car, 20 min on foot

WEBSITE

MARSEILLE



2 establishments

- Maisons du Monde Hôtel & Suites La Rochelle ****
- Les Brises Hotel ***



Maisons du Monde Hôtel & Suites La Rochelle****

Nestling in the heart of La Rochelle's Old Port, this Maisons du Monde Hôtel & Suites offers a refined and elegant setting for an unforgettable stay. The decor, inspired by the Maisons du Monde collections, creates a warm, cocooning atmosphere right from the entrance.

Brand:

Maisons du Monde Hôtel & Suites

Features:

63 rooms including 10 twins | Categories : Cosy, Comfort, Deluxe City view, Deluxe Old Port view, Junior Suite, Junior Suite Old Port view with terrace, Family room

Room sizes:

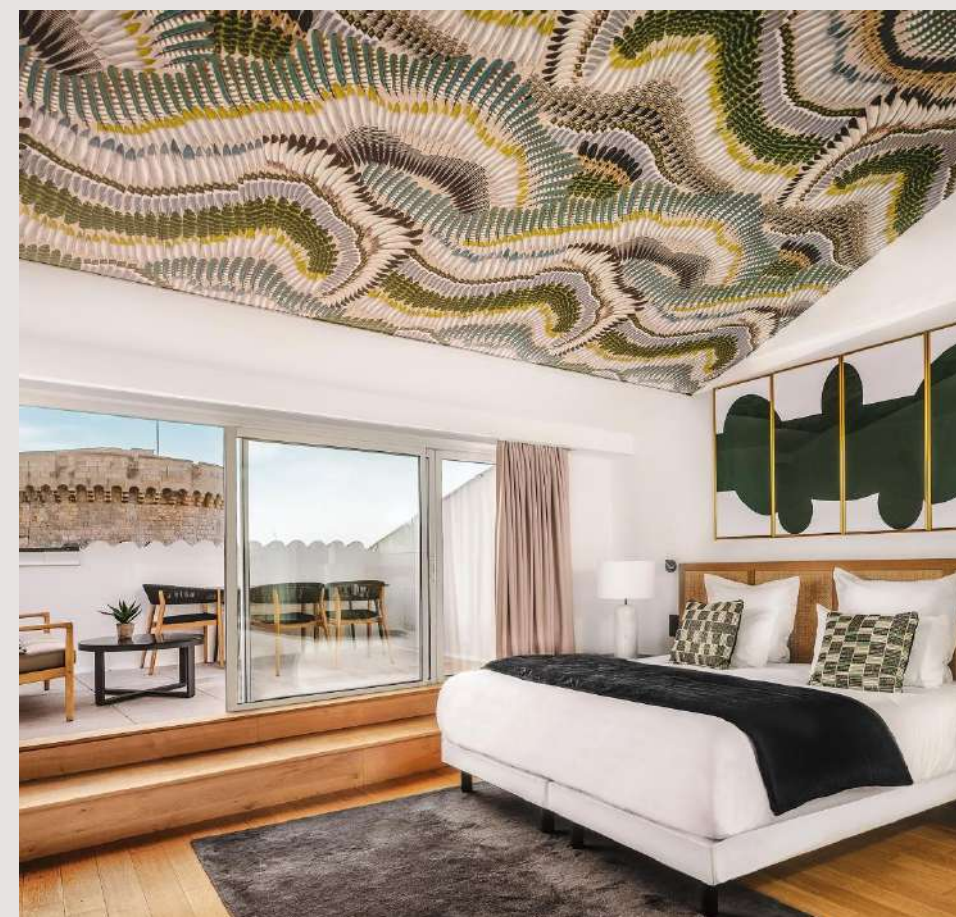
From 10 to 47m² | Up to 4 people

Accessibility:

- La Rochelle airport: 15 min by car
- La Rochelle railway station: 15 min by car, 15 min on foot

WEBSITE

LA ROCHELLE



OPENING SPRING 2026

LA ROCHELLE

Les Brises Hôtel***

Les Brises – Oceanfront Hotel offers a simple and authentic experience facing the sea. A renovated 3-star hotel with 50 light-filled rooms, most with ocean views, and a warm seaside atmosphere where a sincere welcome is the order of the day.

Brand:

Independant

Features:

50 rooms | Categories: Cosy balcony with courtyard view, Comfort with courtyard view, Comfort with balcony and courtyard view, Comfort with partial sea view, Comfort with balcony and sea view, Comfort triple with courtyard view, Comfort quadruple with balcony and sea view

Room sizes:

From 12 to 34m² | Up to 4 people

Accessibility:

- La Rochelle airport: 10 min by car
- La Rochelle railway station: 17 min by car, 26 min by public transportation



1 establishment

- Marty Hôtel Bordeaux ****



Marty Hôtel Bordeaux****

Nestling in the heart of the modernist architecture of the Mériadeck district, the Marty is a welcoming hotel where the emerging creative scene is revealed. It's a lively, unique place where art invites itself in and encourages exchanges and encounters.

Brand:

Tapestry Collection by Hilton

Features:

61 rooms including 7 twins | Categories: Queen Guest Room, King Deluxe Room, Twin Deluxe Room, King Deluxe Room with balcony, King Deluxe Room with terrace, King Accessible Deluxe Room with terrace

- Bar
- Meeting room

Room sizes:

From 16 to 26m² | Up to 2 people

Meeting room:

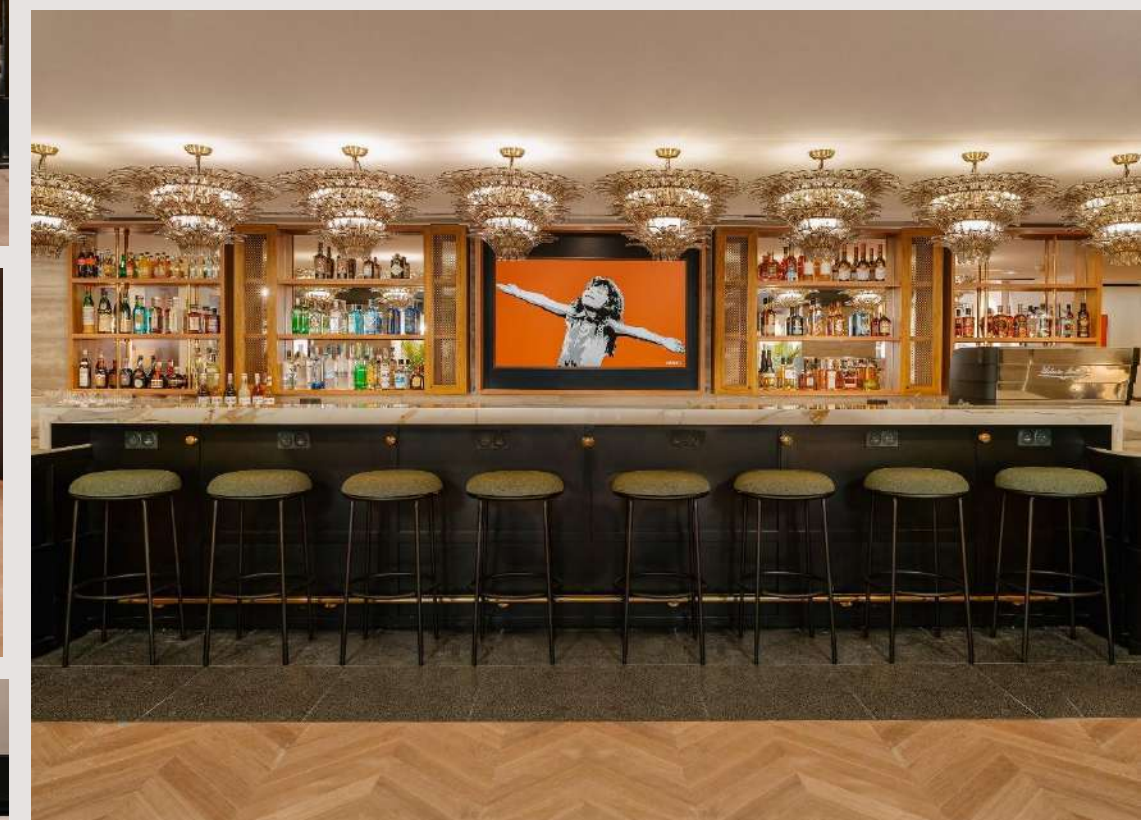
22m² | Up to 12 people

Accessibility:

- Bordeaux Saint-Jean train station: 17 min by car
- Bordeaux-Mérignac airport: 35 min by car
- Nearest tram stop: Saint-Bruno

WEBSITE

BORDEAUX



1 establishment

- Ibis Styles Laval Centre Gare ***



Ibis Styles Laval Centre Gare***

Discover modern comfort and conviviality at the Ibis Styles Laval Centre Gare, a haven of relaxation in the heart of the city. The carefully decorated hotel is ideally located in Laval city centre, 5 minutes from the train station.

Brand:

Ibis Styles, Accor Group

Features:

50 standard rooms including 2 twins | Category : Standard

- Bar
- Meeting room

Room sizes:

From 12 to 15m² | Up to 3 people

Meeting room:

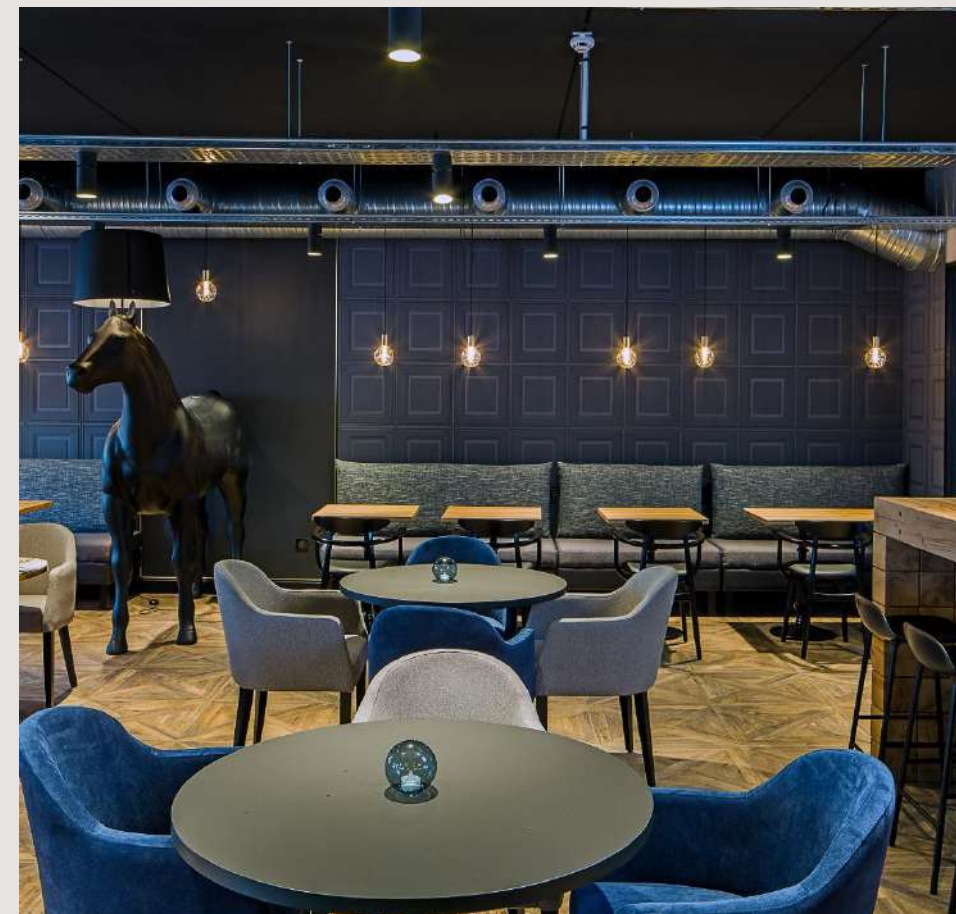
35m² | Up to 20 people

Accessibility:

- SNCF station: 8 min on foot, 4 min by car
- Nearest bus stop: Buron

WEBSITE

LAVAL



1 establishment

- Suzane Hôtel & Café ***



Suzane Hôtel & Café***

Located right across from Angers train station, the Hôtel Suzane is a charming, discreet establishment. Decorated with care, the hotel offers cosy comfort and a peaceful atmosphere.

A bar and terrace are available to relax and enjoy a moment of conviviality.

Brand:

Independent hotel

Features:

45 rooms including 11 twins | Categories : Cosy, Comfort, Single, Family Comfort
- Coffee Shop

Room sizes:

From 10 to 22m² | Up to 4 people

Accessibility:

- Angers airport: 25 min by car
- SNCF train station: 2 min walk
- Nearest bus stops: Gare Papin or Les Gares

WEBSITE

ANGERS



1 establishment

▪ Vertime ****



Vertime****

Facing the ocean, Vertime lives to the rhythm of the waves, chance encounters and big meals. We eat, we laugh, we enjoy love and simplicity.

Brand:

Independent Hotel

Features:

105 rooms including 16 twins | Categories: Comfort, Comfort Family, Comfort Port view, Comfort Port view with balcony, Junior Suite, Junior Suite Port view, Junior Suite Port view with balcony, Suite.

- Restaurant
- Rooftop & swimming pool
- Meeting room

Room sizes:

From 15 to 49 m² | Up to 4 people

Meeting room:

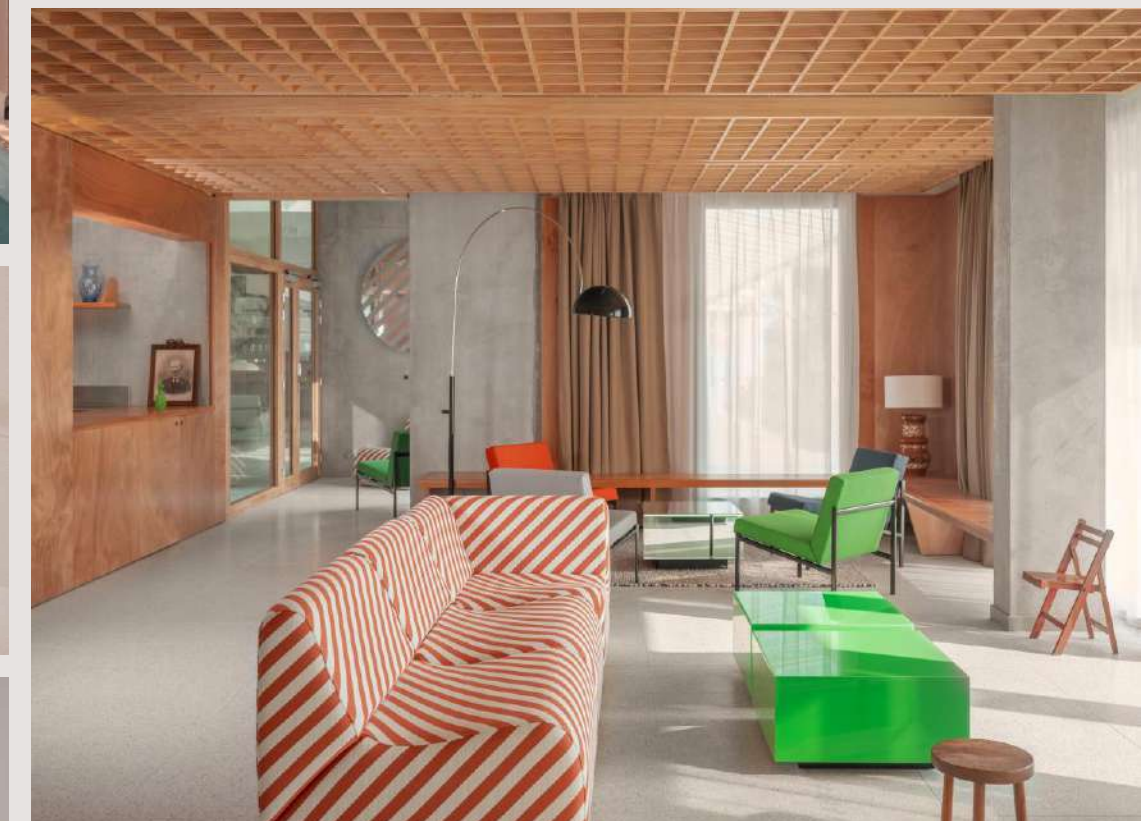
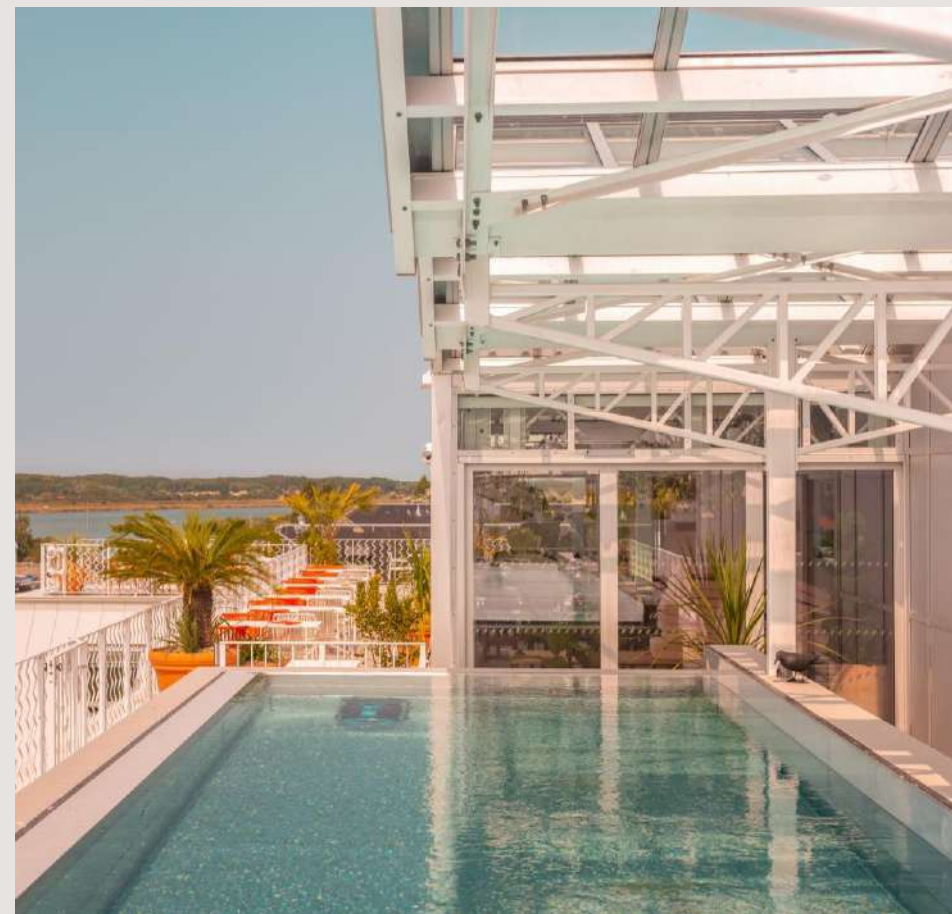
70m² | Up to 70 personnes

Accessibility:

- SNCF train station: 3 min by car, 14 min on foot
- Nantes airport: 1h15 by car

WEBSITE

LES SABLES-D'OLONNE



1 establishment

▪ Atlas Hotel ***



Atlas Hôtel ***

The Hôtel Atlas welcomes you to Brussels near the Grand Place, in the heart of one of the capital's most popular districts, the Dansaert district.

Brand:

Independent Hotel

Features:

88 rooms including 39 twins | Categories: Single room, Double room, Twin room.
- Meeting room

Rooms:

Up to 2 people

Meeting room:

30 people

Accessibility:

- Brussels Central station: 13 min on foot
- Brussels South Station: 30 min on foot
- Brussels Airport : 30 min by car





1 establishment

- Les Cimes Bleues ****

Les Cimes Bleues****

Les Cimes Bleues is a new 4-star hotel in La Baule, designed as a place of escape between land and sea, where sporty chic elegance and seaside lifestyle come together in every space. Decorated by Dorothée Delaye, the project combines noble materials and inspiration from La Baule to offer a warm, refined, and decidedly unique experience to its visitors.

Brand:

Independant hotel

Features:

100 rooms including 11 twins | Categories : Cosy, Standard, Deluxe, Suites

- Meeting rooms
- Restaurant
- Spa
- Bar

Room sizes:

From 18 to 75m² | Up to 4 people

Meeting rooms:

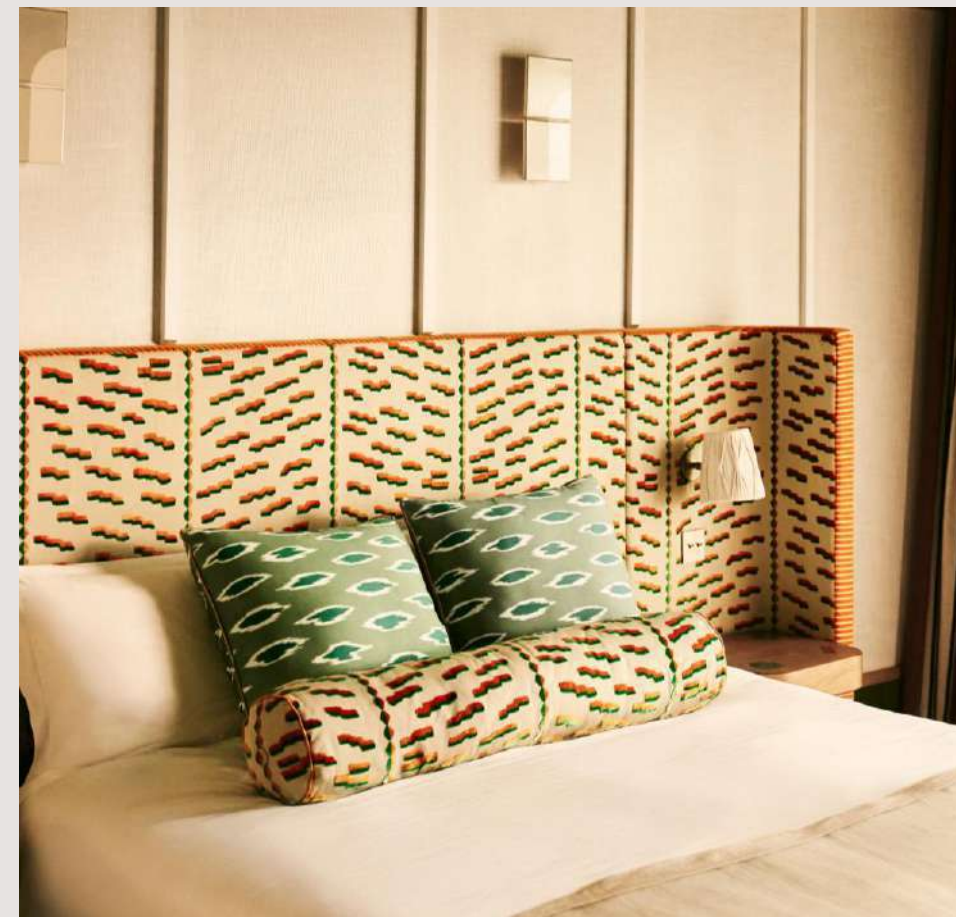
3 meeting rooms, from 40 to 115m² | Up to 100 people

Accessibility :

- La Baule TGV station: 5 min by car, 20 min on foot

OPENING SUMMER 2026

LA BAULE ESCOUBLAC



1 establishment

▪ Maison Nô ****



Maison Nô****

Located in the heart of the Presqu'île district, Maison Nô is an intimate 4-star hotel with 45 bright rooms, nestled in a renovated former bank. Its rooftop terrace with views of Fourvière and its central location, just a stone's throw from Terreaux, make it the ideal place to discover Lyon in a different way.

Brand:

Indépendant hotel

Features:

45 rooms including 10 twins | Categories : Atrium cinema, Club standard, Masterpiece, Nô

- Bar rooftop
- Meeting rooms
- Well-being area

Room sizes:

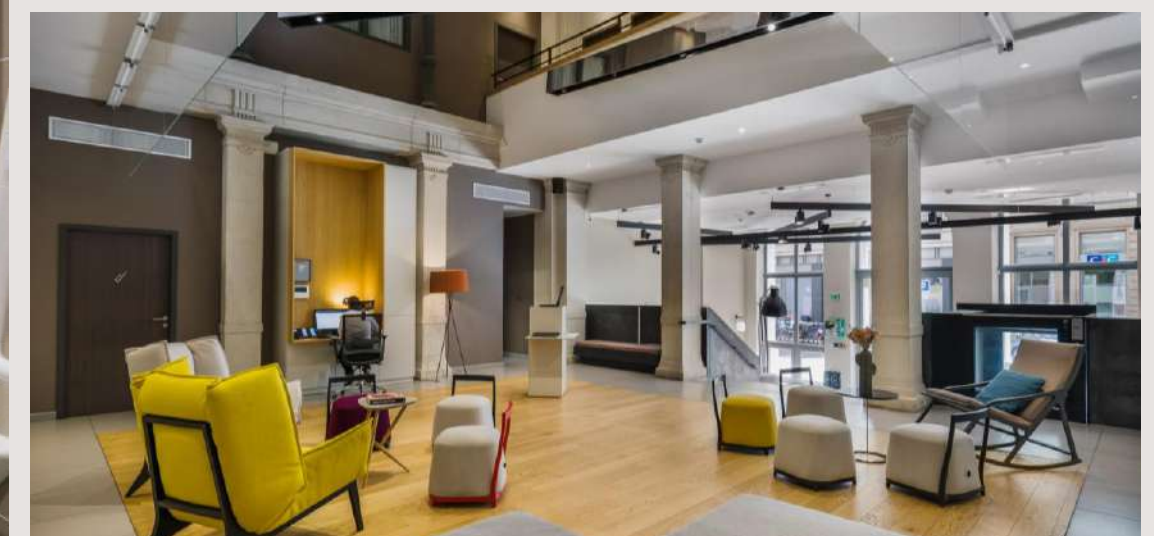
From 20 to 25m² | Up to 2 people

Meeting rooms:

2 meeting rooms, from 25 to 75m² | Up to 50 people

Accessibility :

- Lyon Part Dieu train station: 20 min by car and public transportation
- Lyon Perrache train station: 15 min by car and 8 min by public transportation
- Airport : 35 min by car and 45 by public transportation





YOUNIGHT HOSPITALITY

[Contact us](#) | [Our website](#) | [Linkedin](#) | [Instagram](#)

Younight Hospitality
35 Boulevard de la Liberté | 35000 Rennes
82 Avenue du Maine | 75014 Paris