



SMC

South Midlands Communications

www.smc-comms.com

Specification:

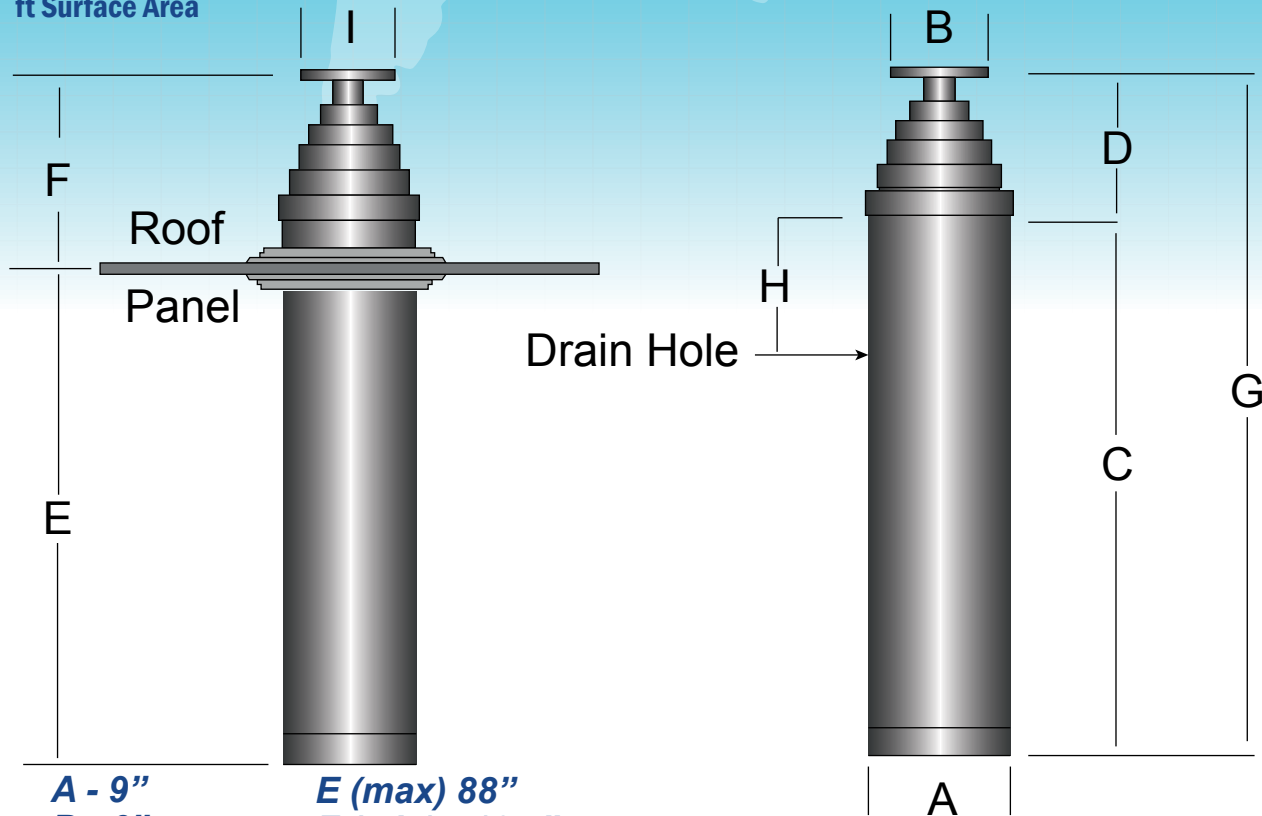
- 48' Extended Height
- 8.83' Retracted Height
- 8 Sections
- 4" Diameter Top Section
- 200 lbs Vertical Head Load
- Basic Mast Weight of 282lbs
- Base Diameter of 9"
- Anodized Finish
- Drain Holes
- Quick Release Pinned Top Spigot
- Complete with Roof Bearing & Mag Switch
- 56mph Unguyed Wind Speed with 12sq ft Surface Area

Benefits & Advantages:

- No Metal-to-Metal Contact, Reduces Wear & Failure Rate
- Drawn Pneumatic Quality Tube, Extends Seal Life
- Interchangeable With Competitors Products
- Split Roof Bearing Design, for Ease Of Fitting
- USA Service Centers Offer Local Support
- Regular Delivery from Stock
- One Piece Molded Seal for Improved Performance
- Reduced Frequency and Low Cost of Service & Maintenance

BROADCAST MASTS

BR48 Spec Sheet

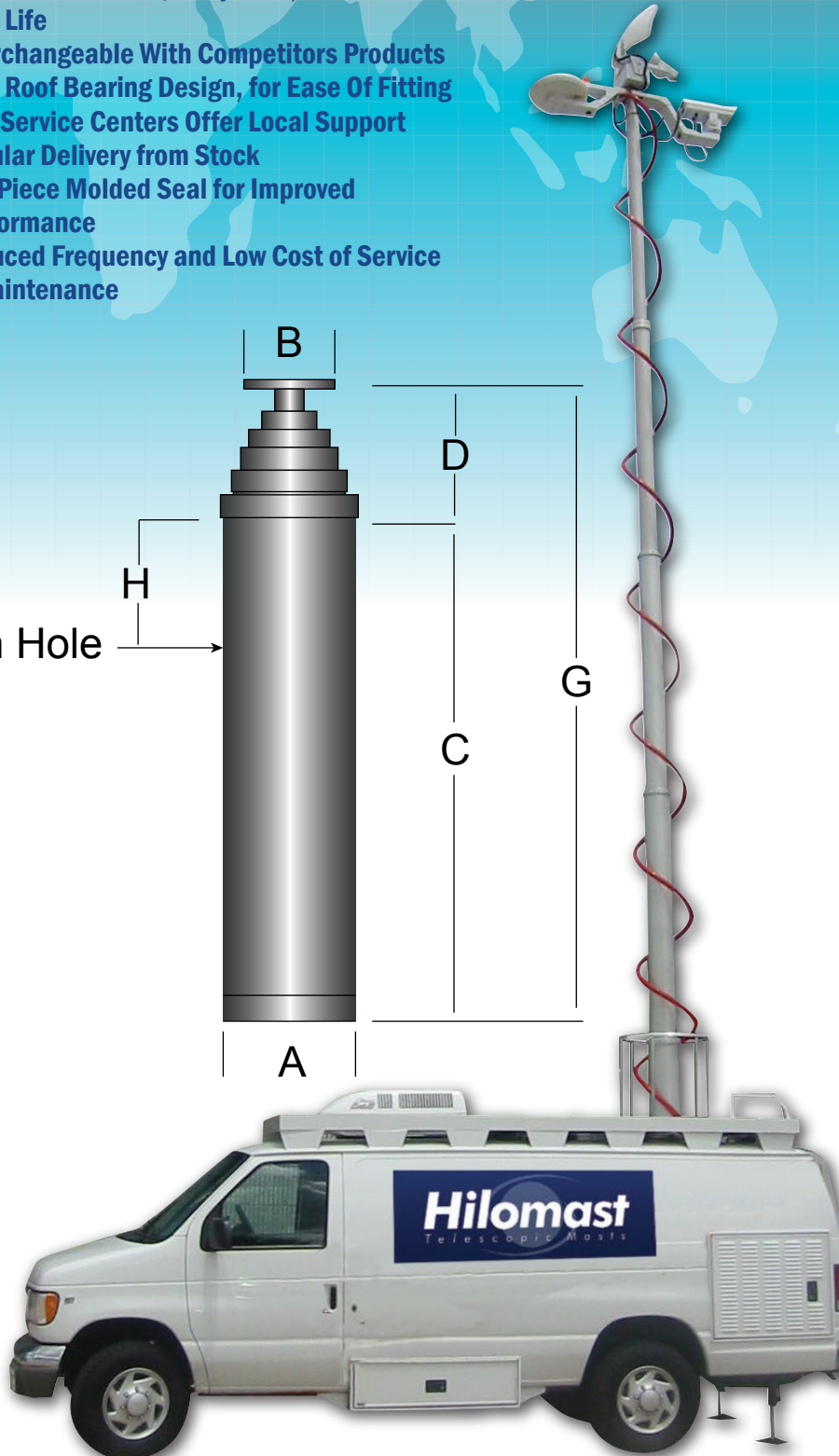


A - 9"
B - 6"
C - 90"
D - 16.5"
E (min) - 61"
E (max) 88"
F (min) - 16.7"
G - 106.5"
H - 21.2"
I - 5.5"

All dimensions are approximate.



South Midlands Communications Ltd
 SM House, School Close, Chandlers Ford
 Industrial Estate, Eastleigh, Hampshire
 SO53 4BY, ENGLAND



WWW.SMC-COMMS.COM

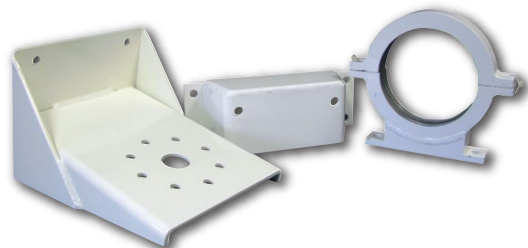


SMC

South Midlands Communications
www.smc-comms.com

BROADCAST MASTS **Mast Mounting Options & Accessories**

Optional Internal Cable



Plug-N-Go Compressors

Available in either 12V/24V DC or 115V/220V AC, this simple to operate compressor includes a regulator, oiler, pressure cut-off switch, electronic dump valve and psi gauge. The design and size of the compressor offers easy operation and portability making it ideal for on the road use (i.e. broadcast vehicles). An electronic quick dump safety valve offers fast but safe mast retraction. Comes standard with a painted aluminium finish, removable carrying handle and shock mounts. All electrical connections are made within a weatherproof box for easy access and safety. A remote control is included with optional operation lengths of wiring.



WWW.SMC-COMMS.COM

South Midlands Communications Ltd
SM House, School Close, Chandlers Ford
Industrial Estate, Eastleigh, Hampshire
SO53 4BY, ENGLAND