

**CIVIL, MECHANICAL & ELECTRICAL ENGINEERING**



**EXAREX SDA BHD**  
**(652650-P)**

**B4-3, BLOCK B, JALAN RADIUS 1/1B,  
JALAN RADIUS BUSINESS PARK,  
63000, CYBERJAYA**

**TEL: 03-8800 8377**

Exarex is a multifaceted organization that established to undertake both, building, civil, mechanical and electrical engineering works especially in telecommunication industry.

Having started as civil constructions, we are expanded rapidly into project management and turnkey construction.

Strongly holding on our philosophy “Customer Ultimate Satisfactory”, we provide our customers a highest quality of works, safety assurance and on time delivery.

We strongly believe that our reputation derives from the perfect blend between company values together with expertise key personnel and experienced.

The skills and capabilities of its people have given strength to Exarex to confidently pursue more challenging projects in future.

**Name of Company** : Exarex Sdn Bhd

**Company No.** : 652650-P

**Date of Incorporation** : 17<sup>th</sup> May 2004

**Board of Directors** :

1. Datuk Wira Mohd Faiz bin Mokhtar

**Paid-up Capital** : RM 500,000.00

**Authorised Capital** : RM 500,000.00

**Business Address** : B4-3, Radius Business Park  
Jalan Radius 1/1B,  
Radius Business Park,  
63000, Cyberjaya,  
Malaysia.

**Telephone No.** : +603 8800 8377

**E-Mail** : hello@exarex.com.my

**Registration** :

1. Lembaga Pembangunan Industri Pembinaan Malaysia  
(CIDB)  
Registration No : 0120050104-PP101086  
Status: G5

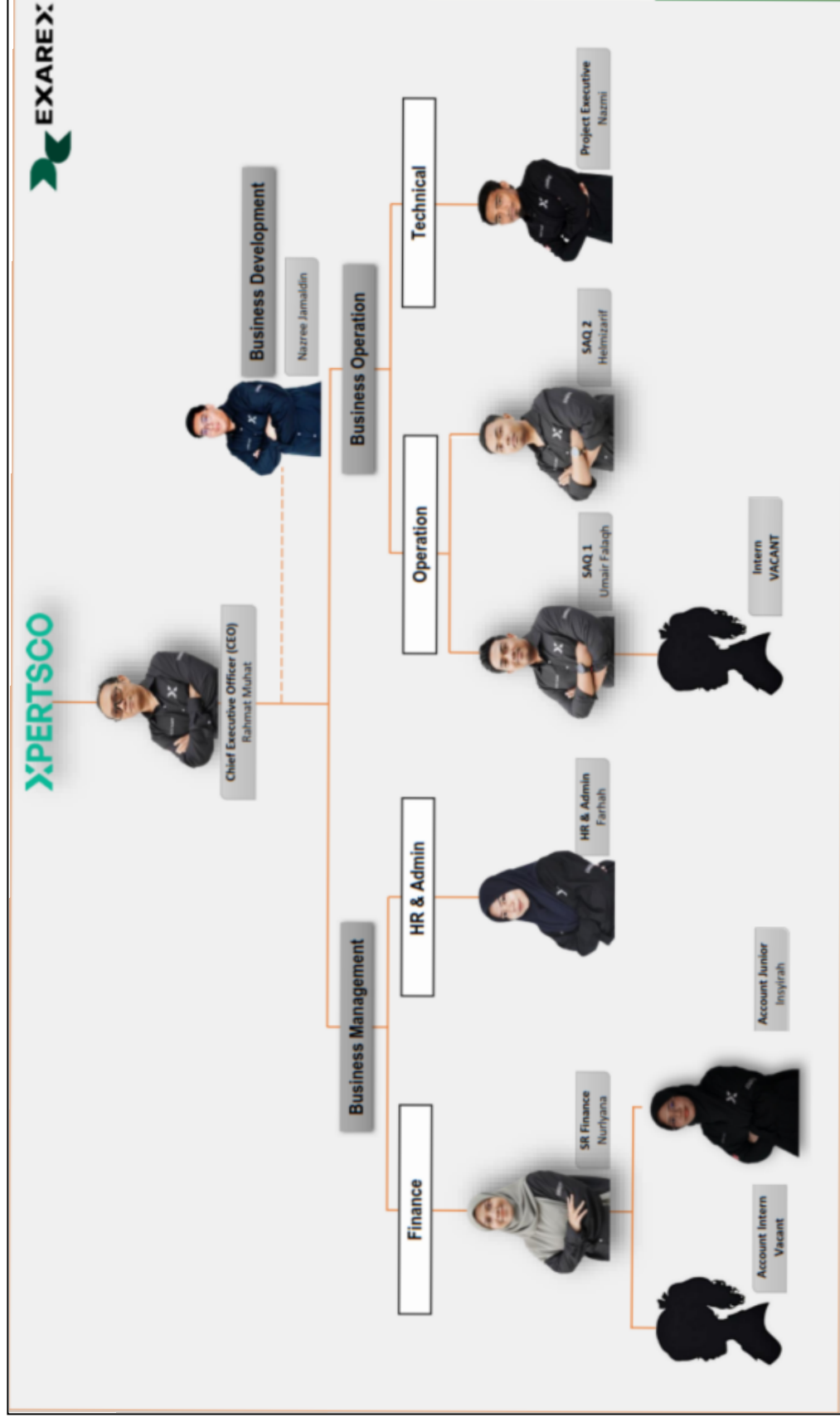
2. Kementerian Kewangan Malaysia (MOF)  
Registration No : 357-02051023

3. Telekom Malaysia  
Registration No : TA01-05-101066
4. Celcom Networks Sdn Bhd  
Registration No : 25359
5. Fiberail Sdn Bhd  
Registration No : (12) FSB/LA/05/PDN
6. Penang Development Corporation – Telecommunication Services (PDCTS)
7. Sapura Research Sdn Bhd
8. Edotco Malaysia Sdn Bhd

**Company Secretary: Tan & Tan Management Services (PG) Sdn Bhd**

**Banker : Public Bank Berhad, Bandar Bayan Baru Branch**

# CORPORATE STRUCTURE



## **Exarex Business Sectors:**

- **Building & Infrastructure**
  - **Telecommunication**
    - **Supply of Telecommunication Structure**
    - **Telecommunication Infrastructure**
- 

## **Project Management**

*Our project management team provides extensive field and project management services with years of experience overseeing all types of building and civil projects.*

## **Complete Site Construction / Civil Construction**

*We provide you the site design and engineering as well as site and civil construction. Our construction teams are well trained and jobs carried by them are closely monitored by our site supervisor.*

## **Tower & PU Cabin Installation**

*With the vast experiences, we provide you the tower erection services for the telecommunication tower and transmission tower as well. Our crews are well equipped with top of the line safety and rigging equipment. They received extensive training and certified by all relevant bodies.*

## **Telecommunication Equipment Installation, Testing & Commissioning**

*The services cover the antenna, feeder and equipment installation, testing and commissioning for the microwave and BTS.*

# LIST OF PRODUCTS



## 4-LEGGED TOWER



## 3-LEGGED TOWER

- Tubular Type
  - Normal Tubular
  - Narrow Base Tubular
- Angular Type



## MONOPOLE

- Standard Monopole
- Monopole with Mast



## PU CABIN



## ROOF TOP STRUCTURE



## CONCEALMENT PRODUCTS

- Monopole Tree
- Monopole with Dome
- Lamp Pole
- RF Transparent Panel



## OTHER STRUCTURES

- Billboard
- Rapid Mobile Structure



## NEW PRODUCTS

- Indoor & Outdoor LED Screen

# 4-LEGGED TOWER



*4-Legged Self Supporting Towers are generally constructed with various sizes of angles for heights ranging from 45m to 106m. The structures are engineered and fabricated to accommodate heavy duty loading imposed from the attachment of microwave dishes and mounting of sector antennas. Besides, the towers are formulated to house a variety of accessories which include platforms, antenna bracket, lighting system, Climbing Ladder, Safety Cage, Cable Ladder, Utility Mounted Poles and etc. The recommended height of this structure is 45m, 60m, 91m and 106 meters and suitable for single/multiple operator usage as a Trunk Site.*

## **Pre-Engineered 4-Legged Tower**

### **Design Criteria:**

- *BS Standards*
- *Wind Speed – 120km/h*
- *Wind load, lateral sway at the top of tower is less than 0.5 degree*

# 3-LEGGED TOWER



3-Legged Tower  
(Tubular Type)



3-Legged Tower  
(Narrow Based Tubular)



3-Legged Tower  
(Angular Type)

## 3-Legged Tubular

3-Legged Tubular Towers are mainly fabricated with circular hollow sections which are specially designed to reduce the number of individual members. We strongly believe that less number of tower members means less fabrication time, less handling and storing problem, less erection time, less chances of misplacing, more efficient in term of man hour per tower, higher productivity with a very cost effective solution. The recommend height of this structure is 30m, 45m, 60m and 76m and suitable for either 1~3 operator usage.

## 3-Legged Narrow Based Tubular Tower

3-Legged Narrow Based Tubular Towers are mainly fabricated with circular hollow sections which are specially designed to reduce the number of individual members and also for space limitation/congested vacant land site. The recommend height of this structure is 30 meters, 45 meters and 60 meters and suitable for single operator usage.

## 3-Legged Angular

3-Legged Self Supporting Towers are generally constructed with various sizes of angles for heights ranging from 45m to 76m. The structures are engineered and fabricated to accommodate medium duty loading imposed from the attachment of microwave dishes and mounting of sector antennas. Besides, the towers are formulated to house a variety of accessories which include platforms, antenna bracket, lighting system, climbing ladder, cable ladder, utility mounted poles and etc. This design is suitable for 3 operators sharing for the normal end site.

## Pre-Engineered 3-Legged Tower

### ***Design Criteria:***

- BS Standards
- Wind Speed – 120km/h
- Wind load, lateral sway at the top of tower is less than 0.5 degree



Standard Monopole



Monopole Mast

## Standard Monopole

The Standard Monopole, a single legged tubular tapered structure specially designed to serve lower loading of mounting features. A slip joint system complete with double lock-in holding pins is adopted to all connections of panels to enhance firm and faster installation as well as to achieve necessary sight of alignment. Monopole is always the first preference whenever moderate tele-traffic volume needs to be on air. The recommend height of this structure is 18m, 24, 30m and suitable for single/multiple operator usage.

## Monopole Mast

Monopole Mast, is similar to Standard Monopole with an additional mast structure on the top of the monopole. The advantages for the mast are to provide maximum flexibility for the Antenna & microwave mounting in terms of height and direction. The recommend height for this structure is from 16m, 24m, 30m, 36m and 45m.

## Pre-Engineered Monopole

### ***Design Criteria:***

- BS Standards
- Wind Speed – 120km/h
- Wind load, lateral sway at the top of tower is less than 0.5 degree

## **POLYURETHANE (PU) CABIN**



Exarex provides complete services on supply and construction of telecommunication equipment cabin for all types of BTS sites. Our one-stop services which accompanied with broad workforce stratum have proven to cut down time and cost where the clients might have to spend for site coordination and communication works between their multiple subcontractors and of cause the associated problems. The PU cabin usually can be manufacture in various or custom size to customer requirement and specifications. The cabin comes with a unique Door Panel System for longer life span and better Air Seal solely under our own design.

# ROOF TOP STRUCTURE



Decorative Antenna & Microwave Tripod / Pole



Standard Antenna & Microwave Pole / Tripod / Boom



Rooftop Mast



Unipole



## Monopole Tree

A disguised monopole constructed by tapered steel section finished with synthetic skin, branches and leaves. The available height for this structure is from 16m, 24m, 30m, 36m and 45m.

# CONCEALMENT PRODUCTS



## Lamp Pole

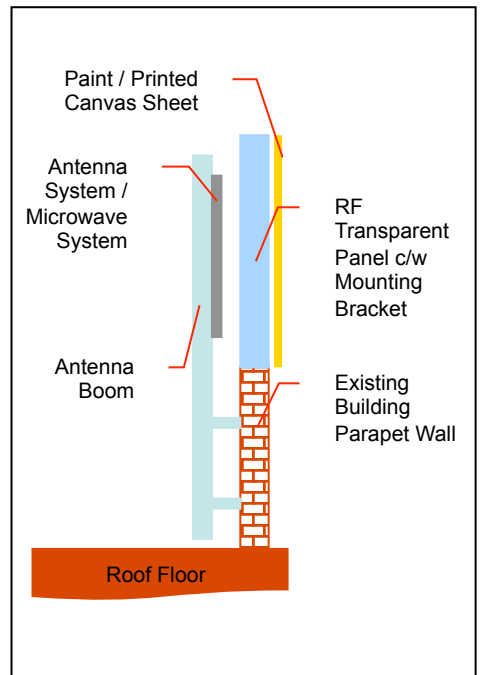
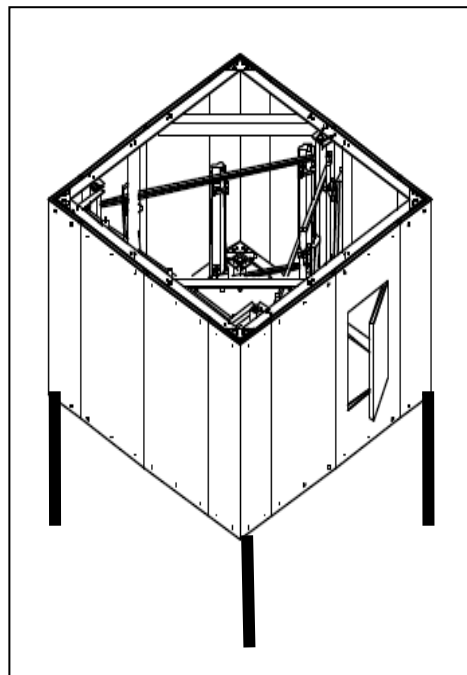
The design is available in a variety of lighting fixtures. Built to the height your specification requires these lamp poles offer another opinion for blending an antenna into the environment.



## Monopole with Dome

This design is suitable for the installation inside the mosque compound area. The color and design of the structure will naturally blend with the physical outlook of the surrounding area.

# CONCEALMENT PRODUCTS



## RF Transparent Panel

The material is made from special composition of fiberglass panel and finish by using paint or cover with printed advertisement canvas. The frame will be designed by using HDG steel frame. Antenna and microwave system will be covered behind the panel in order to maintain the surrounding architecture design and looks.

# OTHER PRODUCTS



Billboard Structure



Rapid Mobile Structure

**SAMPLE OF COMPLETED PRJECTS**

**PROJECT PHOTO**

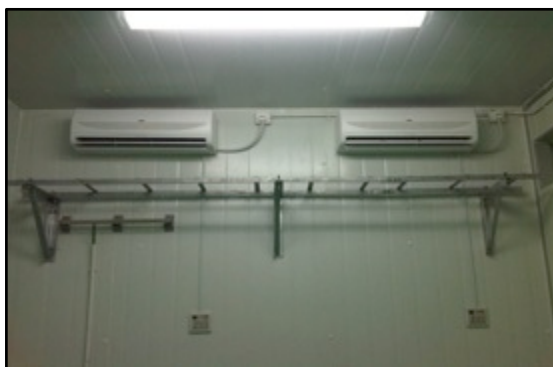
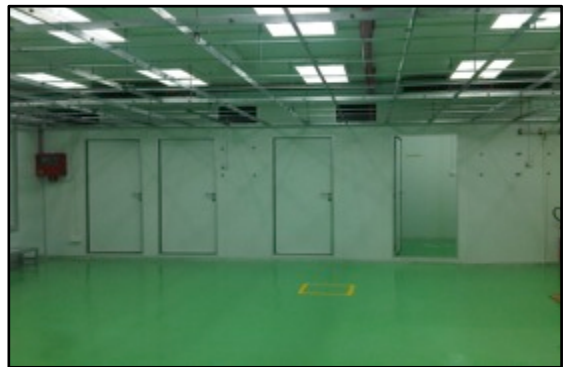
**COMPLETED INFRASTRUCTURE PROJECTS**

**PROPOSED CORRECTIVE MAINTENANCE PLAN FOR  
AERODROME CONTROL TRAINING SIMULATOR SYSTEM (ACTS)  
RMAF AT PENGKALAN UDARA KUANTAN, PAHANG DARUL  
MAKMUR UNTUK KEMENTERIAN PERTAHANAN MALAYSIA,  
MARKAS TENTERA UDARA**



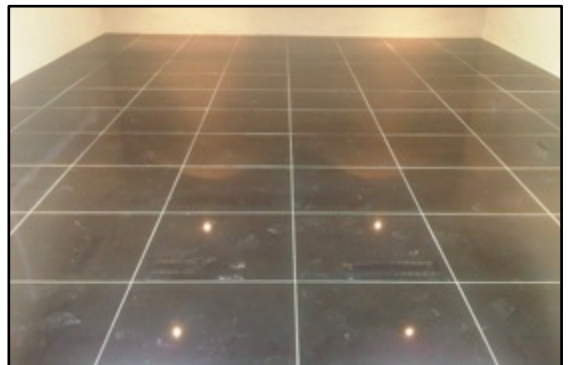
**COMPLETED INFRASTRUCTURE PROJECTS**

**PROPOSED CIVIL, MECHANICAL AND ELECTRICAL WORKS FOR UPGRADING EXCHANGE ( 1 STOREY BUILDING ) AT PLOT 112, MERGONG BARRAGE 2-B, BANDARAYA ALOR SETAR, KEDAH DARULAMAN FOR TETUAN CELCOM AXIATA BERHAD**



**COMPLETED INFRASTRUCTURE PROJECTS**

**RENOVATION WORKS AT EXISTING ACTS BUILDING, TUDM Kuantan for SAPURA DEFENCE SDN BHD**



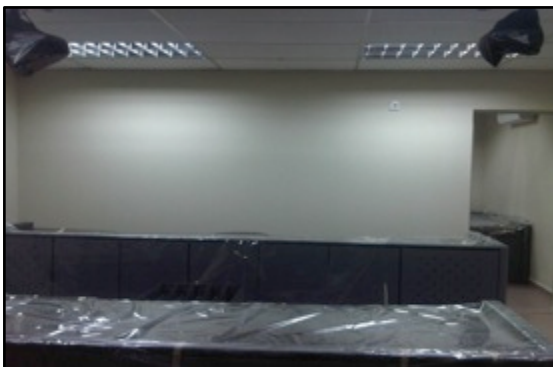
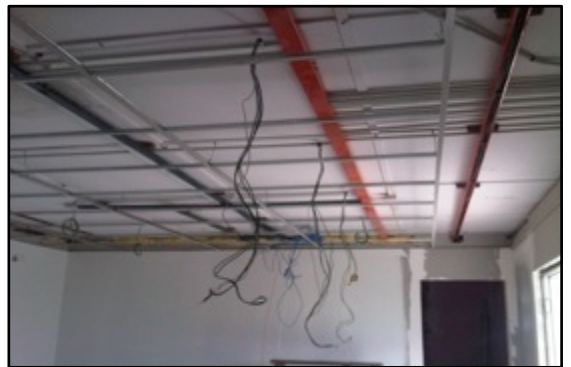
**COMPLETED INFRASTRUCTURE PROJECTS**

**DESIGN & BUILD OF SOILNAILS FOR THE FAILURE SLOPE AT TANJUNG BELUNGKUR FOR SAPURA RESEARCH SDN BHD UNDER SECURE DIGITAL GOVERNMENT INTEGRATED NETWORK**



**COMPLETED INFRASTRUCTURE PROJECTS**

**RENOVATION WORKS AT EXISTING BCCC BUILDING, TUDM Kuantan for SAPURA SECURED TECHNOLOGIES SDN BHD**



**SAMPLE OF COMPLETED PROJECTS**

**BRICK ROOM CONSTRUCTION WORKS**



**SAMPLE OF COMPLETED PROJECTS**

**TOWER INSTALLATION WORKS**



**SAMPLE OF COMPLETED PROJECTS**

**AESTHETIC TREE MONOPOLE C/W CME WORKS**



**SAMPLE OF COMPLETED PROJECTS**

**MONOPOLE INSTALLATION WORKS**



**SAMPLE OF COMPLETED PROJECTS**

**CABIN INSTALLATION WORKS**

