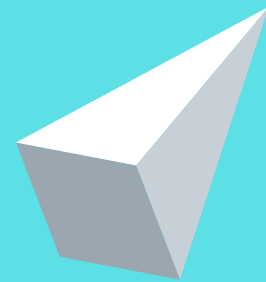
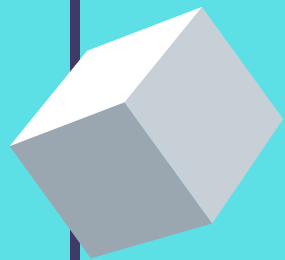




TELECOMMUNICATION INFRASTRUCTURE PROVIDER

A mode of transport for your
telecommunication needs

THE OUTLINE



CONTENTS

Business Details

Past, Current & Future Projects

NFP Development On Main Products

Management Team



The **new** recognized contractor
in the telecommunication
industry to end to end services.

ABOUT NIP GLOBAL LOGISTICS SDN BHD

Network Facilities Provider

COMPANY BACKGROUND

NIP Global Logistics Sdn Bhd (202729-W)

Network Facilities Provider: NFP/1/2000/427

Address: B3-1, Radius Business Park, Off Jalan Teknorat 2,
63000 Cyberjaya.

Tel : +603 8800 8377

Email : hello@nipgloballogistics.com

Inc. : 16th August 1990

Authorized Capital: RM 4,200,000.00

Paid-up Capital: RM 4,200,000.00

Banker : Malayan Banking Berhad

Secretary Agent: Ng Cheng Ling (MAICSA 7034891)



Network Facilities Provider

Our vision at NIP Global Logistics becomes **major installer** & dominating industry while helping mankind to be connected.



OUR
VISION

Network Facilities Provider

Our mission at NIP Global Logistics is participating as **full-fledged player** with energy, poise and boldness in the telecommunication industry.

OUR
MISSION



CORE BUSINESS

What We Offer



**PROJECT MANAGEMENT
OFFICE (PMO)**



**TECHNICAL SERVICES
AND SUPPORT**

PROJECT MANAGEMENT OFFICE (PMO)

Daily Coordination

NFP Registration

BOQ / Rental Rate Negotiation

SAQ - Site Acquisition

Local Council Submission

Tenancy Agreement (Private Land Owner)

LOO / LWO

TNB Online Application

Business Development



TECHNICAL SERVICES AND SUPPORT

Technical Drawing

Construction & Foundation

Poles Erection

TNB / Power Termination

Duo Bay Cabinet:

Installation, Test, & Commissioning

Dismantling Existing Streetlight

Electrical Works



5G REVOLUTION

Taking 5G To The Next Step

We could foresee that the 5G network to be widely use in Malaysia especially in the capital heart of Malaysia: Kuala Lumpur and Klang Valley in 2020.



NIP GLOBAL
LOGISTICS
SDN BHD





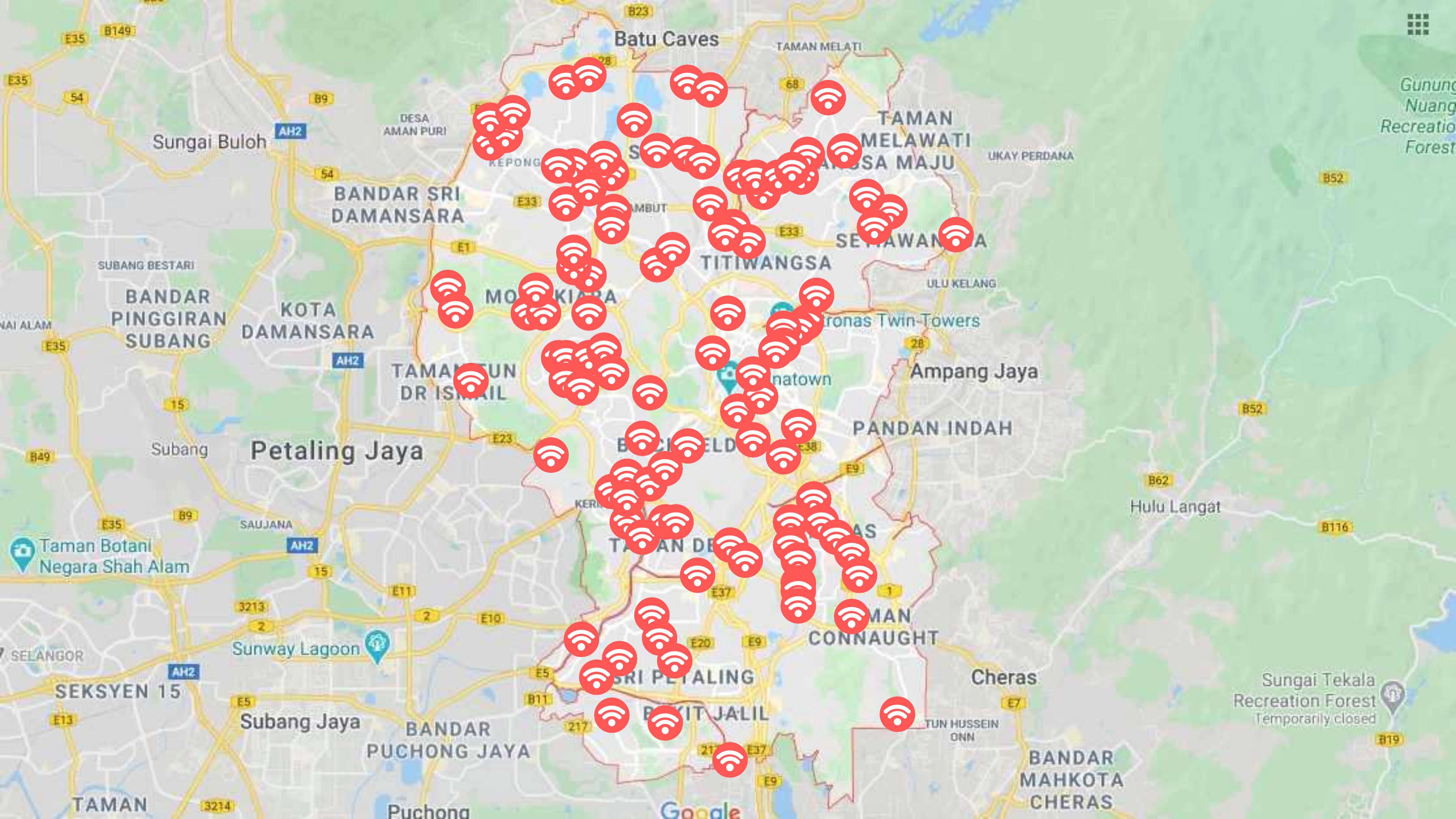
DBKL

SITE LOCATION

Dewan Bandaraya Kuala Lumpur



 DBKL - Private Land / Lampole Replacement



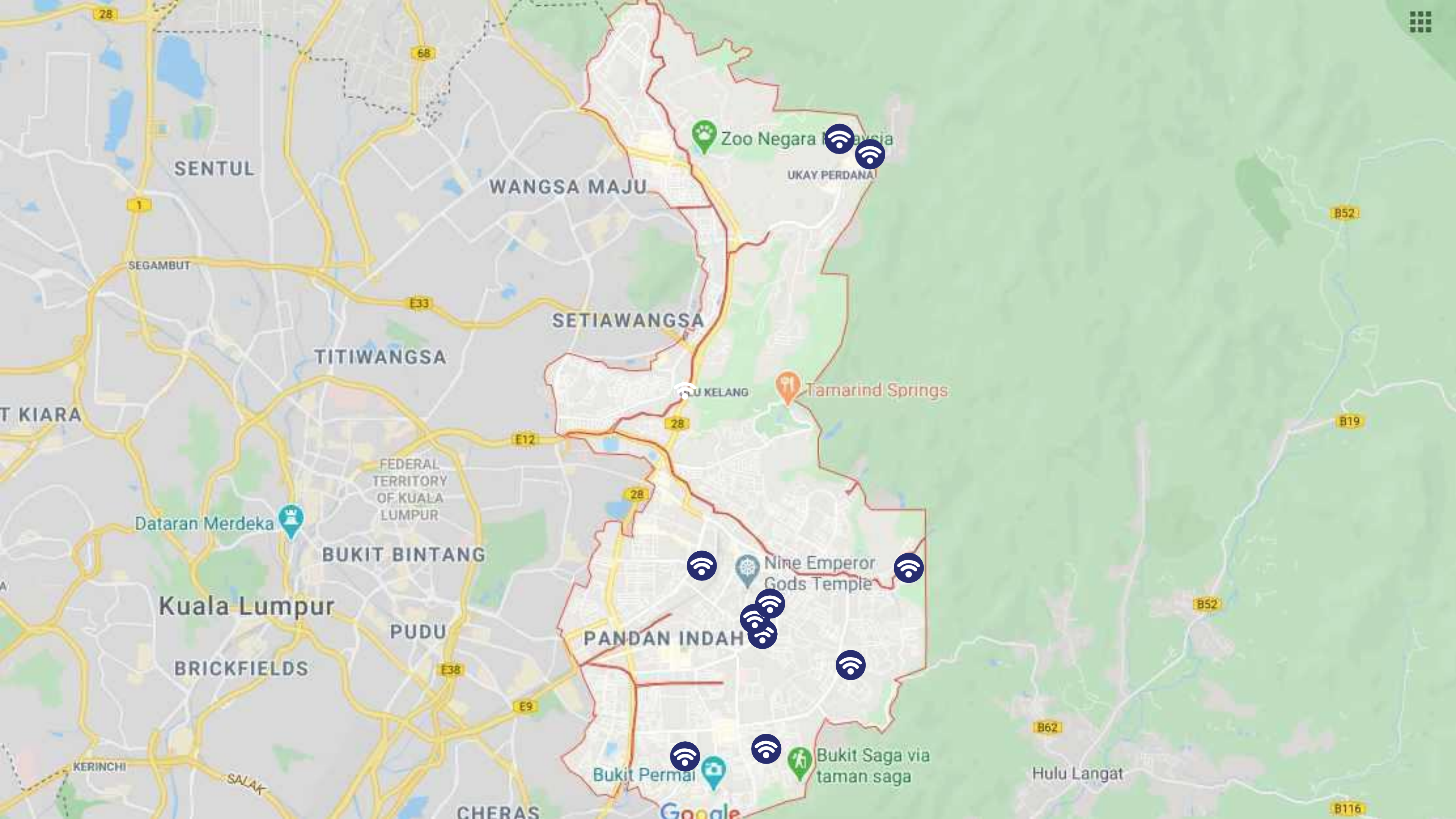
MPAJ

SITE LOCATION

Majlis Perbandaran Ampang Jaya



MPAJ - Private Land / Lampole Replacement



SENTUL

WANGSA MAJU

Zoo Negara Malaysia

UKAY PERDANA

SETIAWANGSA

TITIWANGSA

Tamarind Springs

BUKIT KELANG

BUKIT KIARA

FEDERAL TERRITORY OF KUALA LUMPUR

Dataran Merdeka

BUKIT BINTANG

Kuala Lumpur

Nine Emperor Gods Temple

PUDU

PANDAN INDAH

BRICKFIELDS

Bukit Permai

Bukit Saga via taman saga

Hulu Langat

Google

SITE LIST

	Telco	NFP
To certain Reserve Jalan 2/10, Taman Koperasi Polis, 68100 Batu Caves, Kuala Lumpur	MAXIS	NIP
To certain Reserve Jalan Johar Bukit Damansara 50490, Kuala Lumpur	DIGI	NIP
To certain Reserve Jalan Midah Besar, Taman Midah, 56000 Kuala Lumpur	MAXIS	NIP
To certain Reserve Jalan Langgak Tunku Taman Tunku, 50480 Kuala Lumpur	MAXIS	NIP
To certain Reserve Jalan Damanlela, Bukit Damansara, 50490 Kuala Lumpur	MAXIS	NIP
To certain Reserve Jalan No 187621, PT 181 Seksyen 7, Bandar Kajang, Selangor Darul Ehsan	DIGI	NIP
To certain Reserve Jalan 2/149b, Taman Sri Endah, 57000 Kuala Lumpur	DIGI	NIP
To certain Reserve Jalan Samudera Utama, Taman Samudra, 68100 Batu Caves, Selangor	DIGI	NIP
To certain Reserve Jalan Bunga Raya 3, Bukit Beruntung, 48300 Rawang, Selangor	DIGI	NIP
To certain Reserve Jalan 2/133, Taman Sri Sentosa, 58000 Kuala Lumpur	DIGI	NIP
To certain Reserve Jalan Penggawa, Bandar Mahkota Cheras, 43200 Cheras, Selangor	DIGI	NIP
To certain Reserve Jalan Masjid, Taman Suria Permai, 34850, Changkat Jering	WEBE	NIP
To certain Reserve Jalan Tasik Tambahan 1, Kampung Tasek Tambahan, 68000 Ampang, Selangor	MAXIS	NIP

SITE LIST

	Telco	NFP
To certain Reserve Jalan Bunga Mawar, Taman Lembah Maju, 56100 Kuala Lumpur	MAXIS	NIP
To certain Reserve Jalan Mewah 4, Taman Pandan Mewah, 68000 Ampang, Selangor	MAXIS	NIP
To certain Reserve Jalan Cheras Hartamas, Taman Bukit Segar, 43200 Cheras, Selangor	MAXIS	NIP
To certain Reserve Taman Seri Bukit Segambut, 51200 Kuala Lumpur	MAXIS	NIP
To certain Reserve Jalan Puchong, 58200 Kuala Lumpur	MAXIS	NIP
To certain Reserve Jalan Putra Prima Utama, Taman Putra Prima, 47100 Puchong, Selangor	MAXIS	NIP
To certain Reserve Persiaran Desa Saujana, Taman Putra Prima, 47100 Puchong, Selangor	DIGI	NIP
To certain Reserve Jalan 22/1, Seksyen 22, 40300 Shah Alam, Selangor	DIGI	NIP
To certain Reserve Jalan PJU 10/4C, Damansara Damai, 47830 Petaling Jaya, Selangor	DIGI	NIP
To certain Reserve Jalan Bunga Raya 1, Taman Bunga Raya, 43500 Semenyih, Selangor	DIGI	NIP
To certain Reserve Jalan Kajang Raya 2, Taman Kajang Raya 43000 Kajang, Selangor	DIGI	NIP
To certain Reserve Jalan Ilmu 3, Taman Ilmu, Nibong Tebal, Pulau Pinang	WEBE/MAXIS	NIP
To certain Reserve Lebuh Sultan Mohamed 1/KU16 Kawasan Perindustrian Bandar Sultan Suleiman 42000 Klang, Selangor	DIGI	NIP

SITE LIST

	Telco	NFP
To certain Reserve Jalan BS 9/10, Taman Perindustrian Bukit Serdang 43300 Seri Kembangan, Selangor	MAXIS	NIP
To certain Reserve Jalan Medan Saujana 8, Mukim Kamunting 34600 Perak Darul Ridzuan	MAXIS	NIP
To certain Reserve Jalan Selangat, Taman Bukit Ria, 56100 Kuala Lumpur	MAXIS	NIP
To certain Reserve Jalan Kuchai Maju 12, Kuchai Entrepreneurs Park, 58299 Kuala Lumpur	MAXIS	NIP
To certain Reserve Jalan Lebu Bercham Selatan, 31400 Ipoh, Perak	MAXIS	NIP
To certain Reserve Jalan Permatang Pauh, Mukim Butterworth, 13400 Pulau Pinang	MAXIS	NIP
To certain Reserve Lot 269, Sungai Jawi, Mukim 3, 14200 Pulau Pinang	MAXIS	NIP
To certain Reserve Jalan Seri Wangsa 1, Taman Sri Rampai, 53300 Kuala Lumpur	MAXIS	NIP
To certain Reserve Lot 873, Kampung Tasek, Mukim 1, 14120 , Simpang Ampat, Penang	MAXIS	NIP
To certain Reserve Lebu Kebun Nenas 1/ KS 7 Bandar Putera 42000 Klang Selangor	WEBE/MAXIS	NIP
To certain Reserve Jalan Putra Prima Tengah, Taman Putra Prima, 47100 Puchong, Selangor	WEBE	NIP
De Palma Apartment 6, Persiaran Setia Makmur, Seksyen U13 Setia Alam, 40170 Shah Alam, Selangor	WEBE	NIP

SITE LIST

	Telco	NFP
To certain Reserve Jalan Lorong CP 6/50, Cheras Perdana, 43200 Cheras, Selangor	WEBE	NIP
To certain Reserve Cyberjaya, 63000 Cyberjaya , Selangor	WEBE	NIP
To certain Reserve Jalan Kampung Pandan, Kelab Golf di Raja Selangor, 55100 Kuala Lumpur	WEBE	NIP
To certain Reserve Jalan Bandar Tasik Puteri, 48020 Rawang, Selangor	WEBE	NIP
To certain Reserve Ruang Bumbung Blok D, Jabatan Kimia, Fakulti Sains, Universiti Malaya, 50603 Kuala Lumpur	WEBE	NIP
To certain Reserve Kawasan Bumbung Chee Kheng Can Factory, 2627, Lorong Perusahaan 1 Kawasan Perusahaan Perai 13600 Perai, Penang	CELCOMDIGI	NIP



**NIP GLOBAL
LOGISTICS
SDN BHD**

**NFP DEVELOPMENT
ON MAIN PRODUCTS**





LANDED STRUCTURE WITH LED LIGHTS

LAMPOLE, MONOPOLE, MONOPOLE TREE

18 Meter 1W 1T (Lampole)

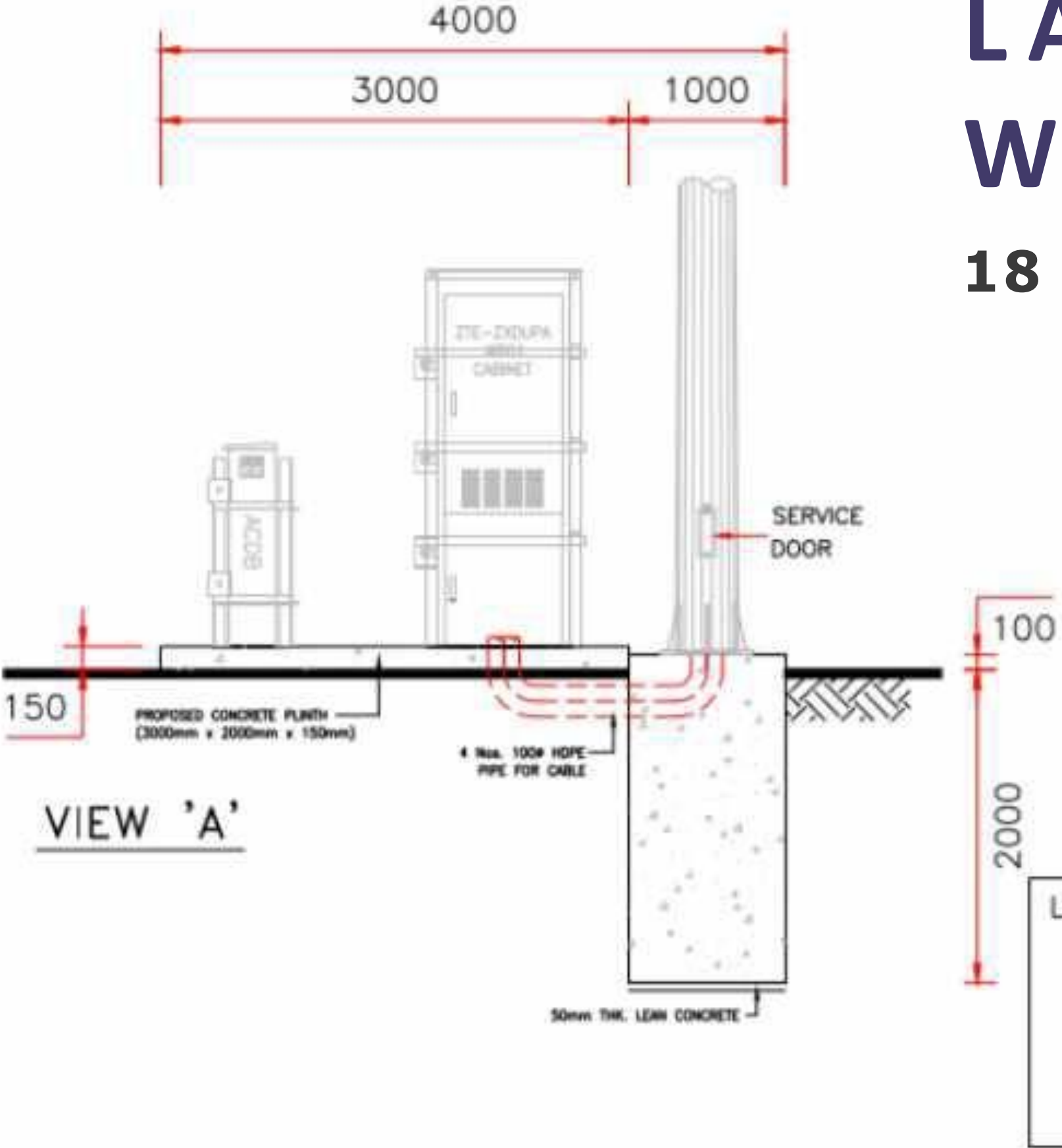
24 Meter 2W 2T (Lampole)

30 Meter 3W 3T (Lampole)

30 Meter 3W 3T (Monopole Tree)

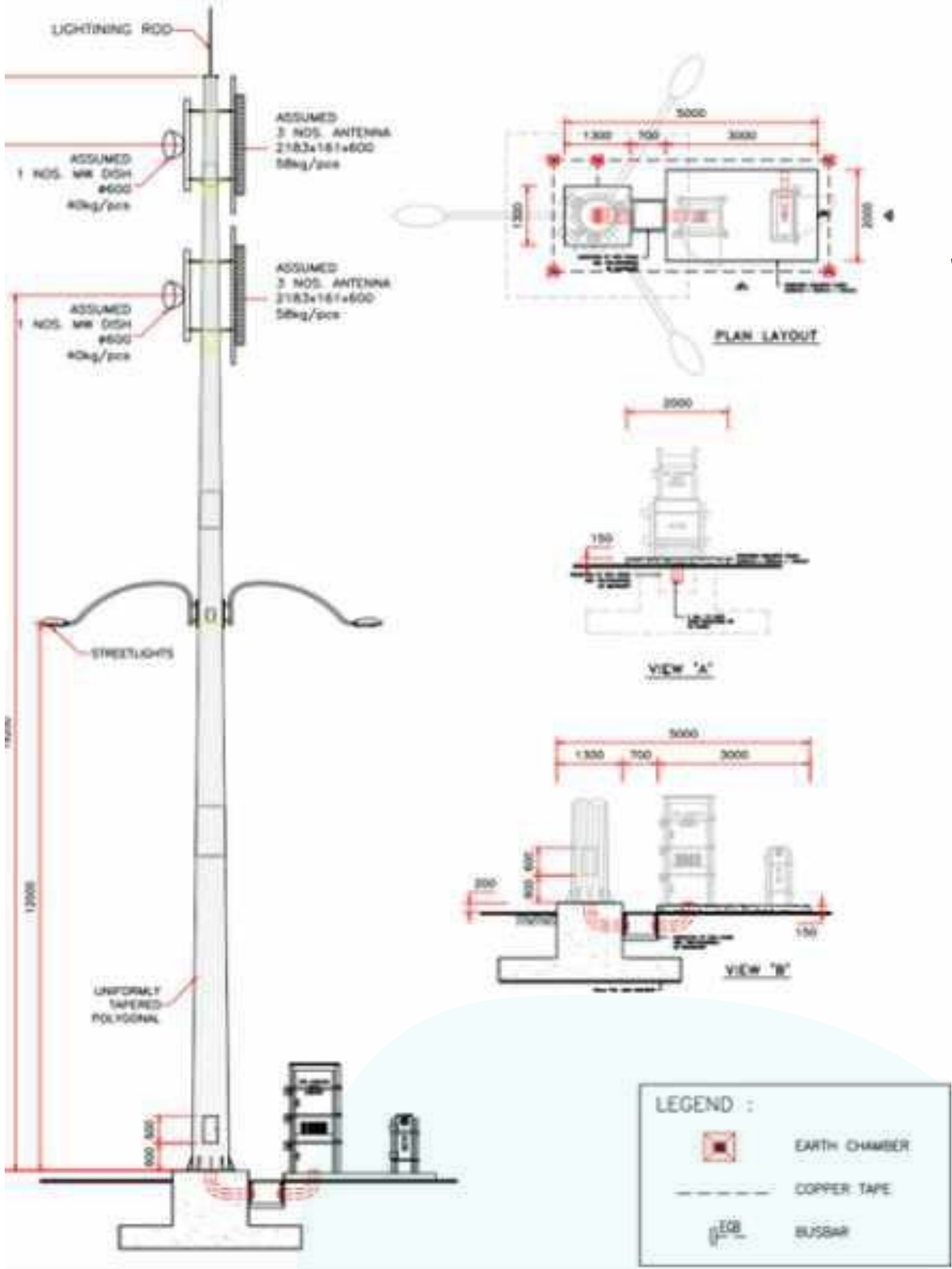
LANDED STRUCTURE WITH LED LIGHTS

18 METER LAMPOLE SITE LAYOUT



LANDED STRUCTURE WITH LED LIGHTS

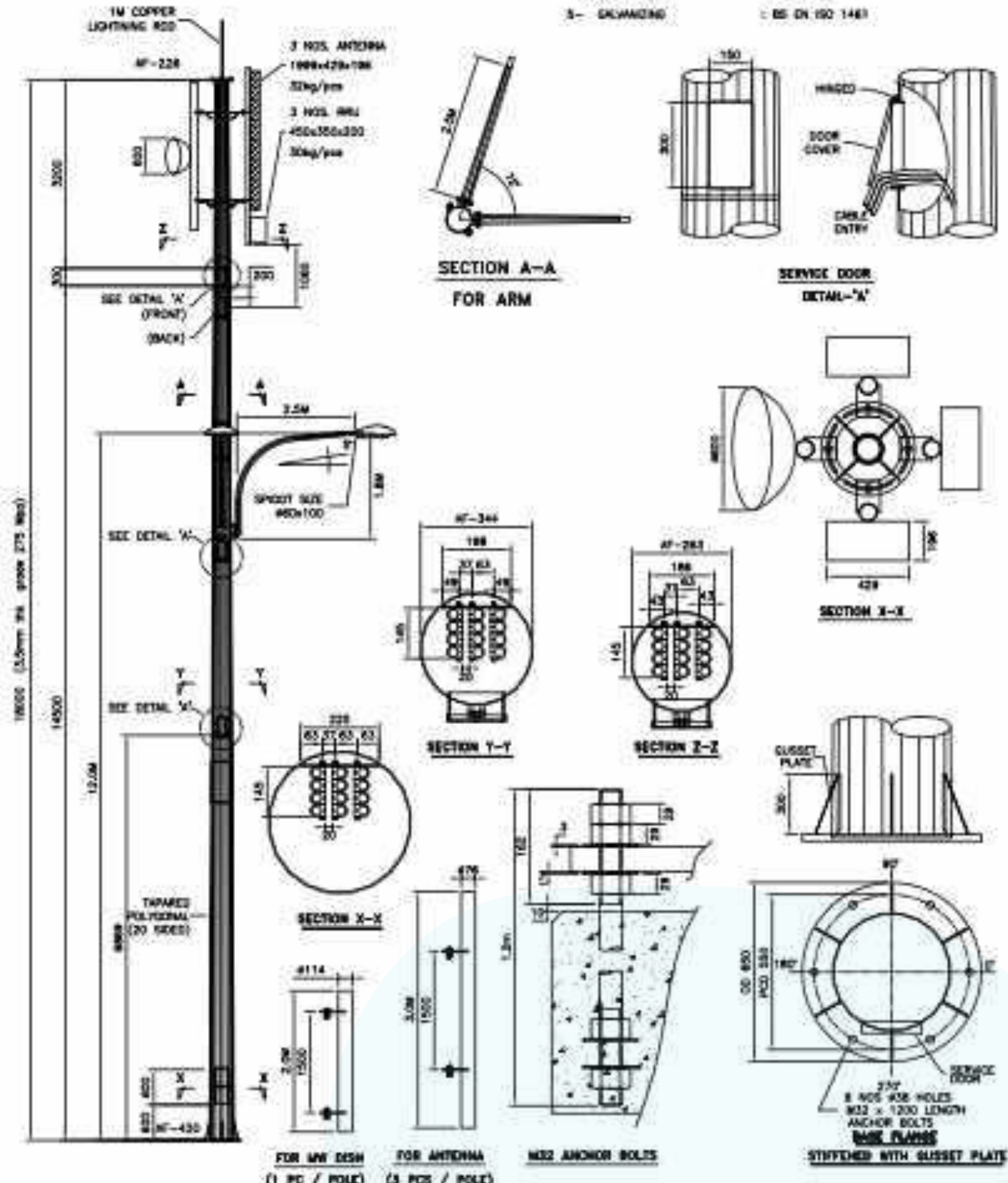
24 METER LAMPOLE SITE LAYOUT



LANDED STRUCTURE WITH LED LIGHTS

18 METER 1W 1T LAMPOLE

SPECIFICATION	
1- POLE DESIGN	1. ILE TRT
2- SURVIVAL WIND SPEED	33.3 m/s
3- SERVICEABILITY DEFLECTION ACCEPTANCE CRITERIA	1" MAX. SWAY AT POLE TOP
4- MATERIAL	
4.1) POLE	BS 4360 Gr. S50
4.2) STEP BOLTS	BS 23121 S5430
4.3) WELDING	BS 1011-1
5- GALVANIZING	BS EN 102 1461



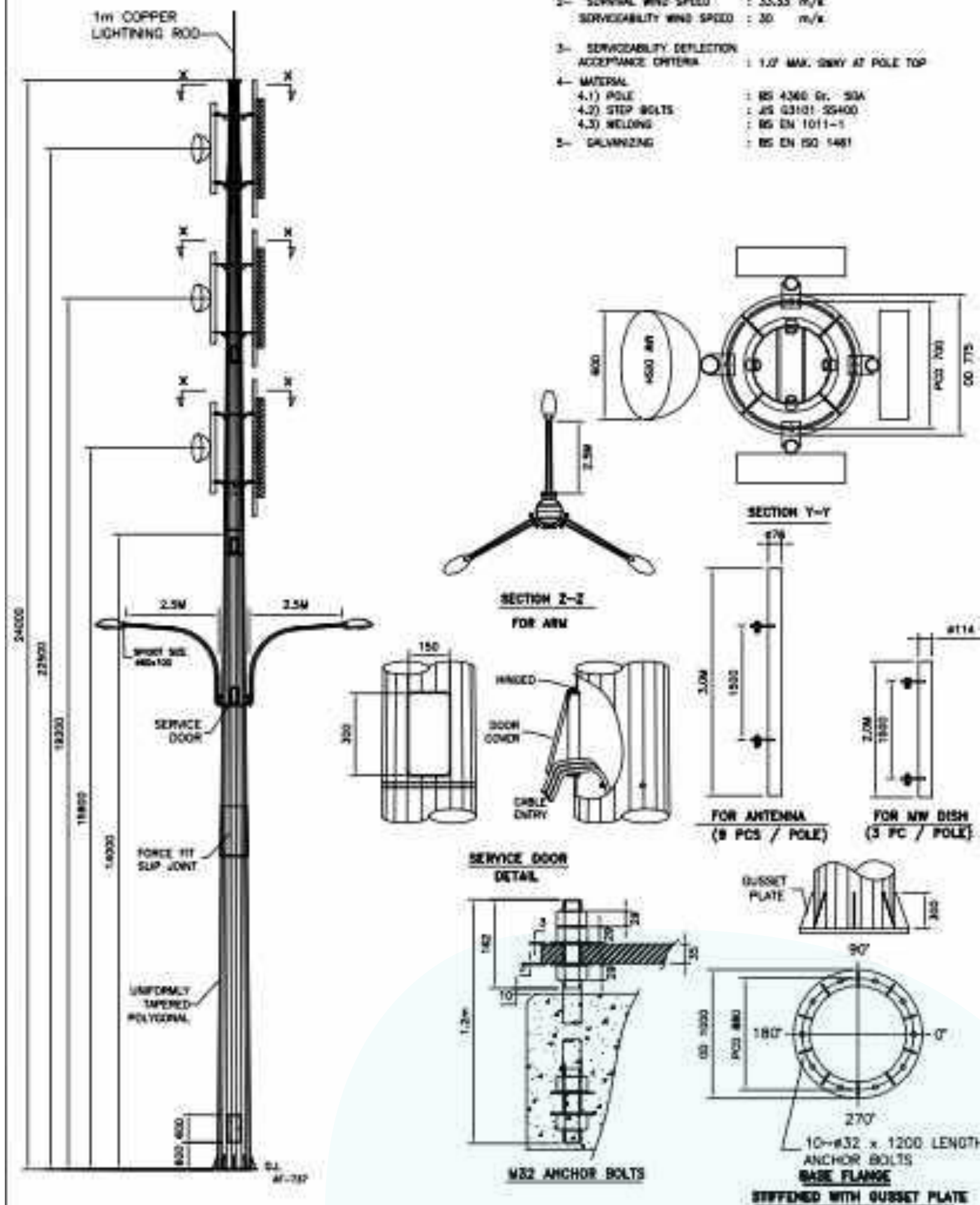
- Lower/Upper Service Door in between range of 14.8m
- 4 units 2 meter sub-boom
- Numbers of feedercabling via innerpole up to upper service door:
 - 1/2" – maximum to 16 runs
 - 7/8" – maximum to 6 runs
 - 1 5/8" – maximum to 3 runs
- Plan layout – 3.0 m x 1.30 m
- 3 units RRU on top of the Lampole

LANDED STRUCTURE WITH LED LIGHTS

24 METER 2W 2T LAMPOLE

- 2 Upper Service Door in between the sub-boom
- 4 units sub-boom for each Tier consists of:
 - 3 units of 3m sub-boom for RF Antenna
 - 1 unit of 2m sub-boom for Tx Antenna
- Numbers of feeder cabling via inner pole up to upper service door:
 - 1/2" – maximum to 24 runs
 - 7/8" – maximum to 9 runs
 - 1 5/8" – maximum to 6 runs
- Plan layout – 3.0 m x 1.30 m
- 6 RRU units on the top of Lampole

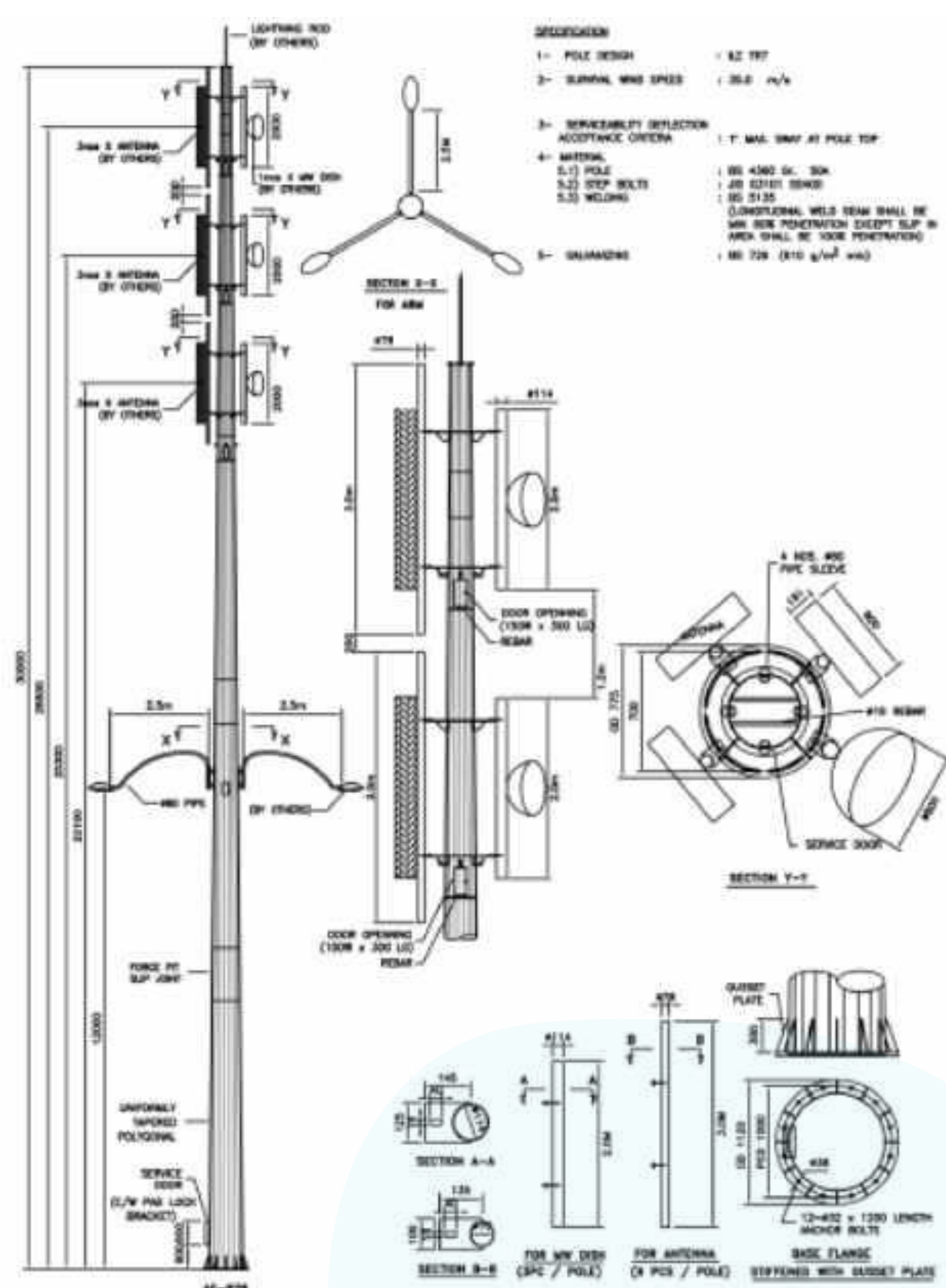
SPECIFICATION	
1- POLE DESIGN	: ILE 1W7
2- SURVIVAL WIND SPEED	: 33.33 m/s
SERVICABILITY WIND SPEED	: 30 m/s
3- SERVICABILITY DEFLECTION ACCEPTANCE CRITERIA	: 1.0% MAX. SWAY AT POLE TOP
4- MATERIAL	
4.1) POLE	: BS 4360 Gr. S3A
4.2) STEP BOLTS	: BS 43101-35400
4.3) WELDING	: BS EN 1011-1
5- GALVANIZING	: BS EN ISO 1461



LANDED STRUCTURE WITH LED LIGHTS

30 METER 3W 3T LAMPOLE

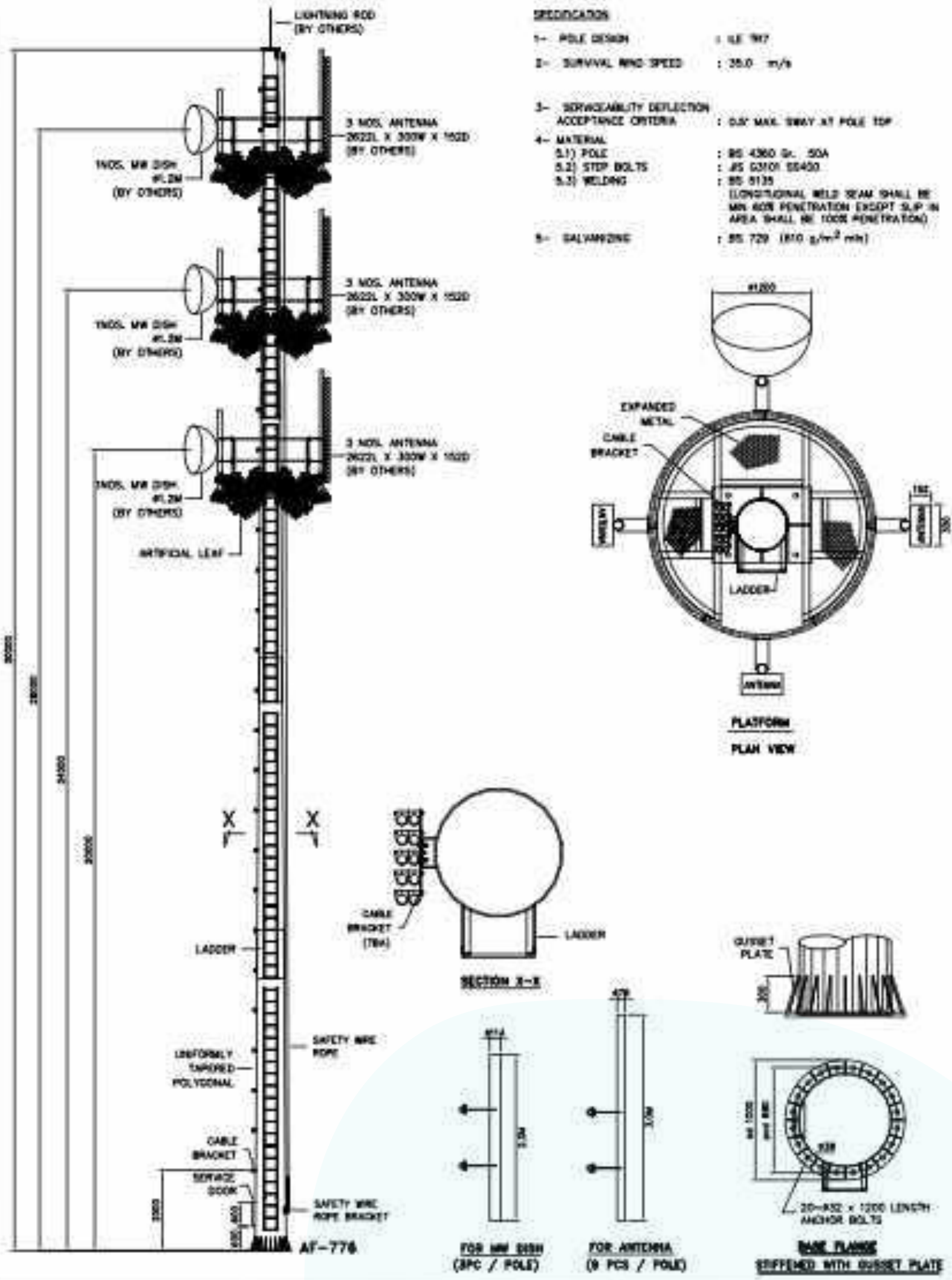
- 3 Upper Service Door in between the sub-boom
- 4 units sub-boom for each Tier consists of:
 - 3 units of 3 m sub-boom for RF Antenna
 - 1 unit of 2m sub-boom for Tx Antenna
- Numbers of feeder cabling via inner pole up to upper service door:
 - 1/2" – maximum to 36 runs
 - 7/8" – maximum to 12 runs
 - 1 5/8" – maximum to 9 runs
- Plan layout – 5.0 m x 1.30 m
- 9 RRU units on the top of Lampole



LANDED STRUCTURE WITH LED LIGHTS

30 METER MONOPOLE TREE

- Cabling routing via cableladder.
- 4 units sub-boom for each Tier consists of:
 - 3 units of 3 m sub-boom for RF Antenna
 - 1 unit of 2m sub-boom for Tx Antenna
- Numbers of feeder cabling via inner pole up to upper service door:
 - 1/2" – maximum to 18 runs
 - 7/8" – maximum to 12 runs
 - 1 5/8" – maximum to 6 runs
- Plan layout – 5.0 m x 1.30 m
- 9 RRU units on the top of Monopole





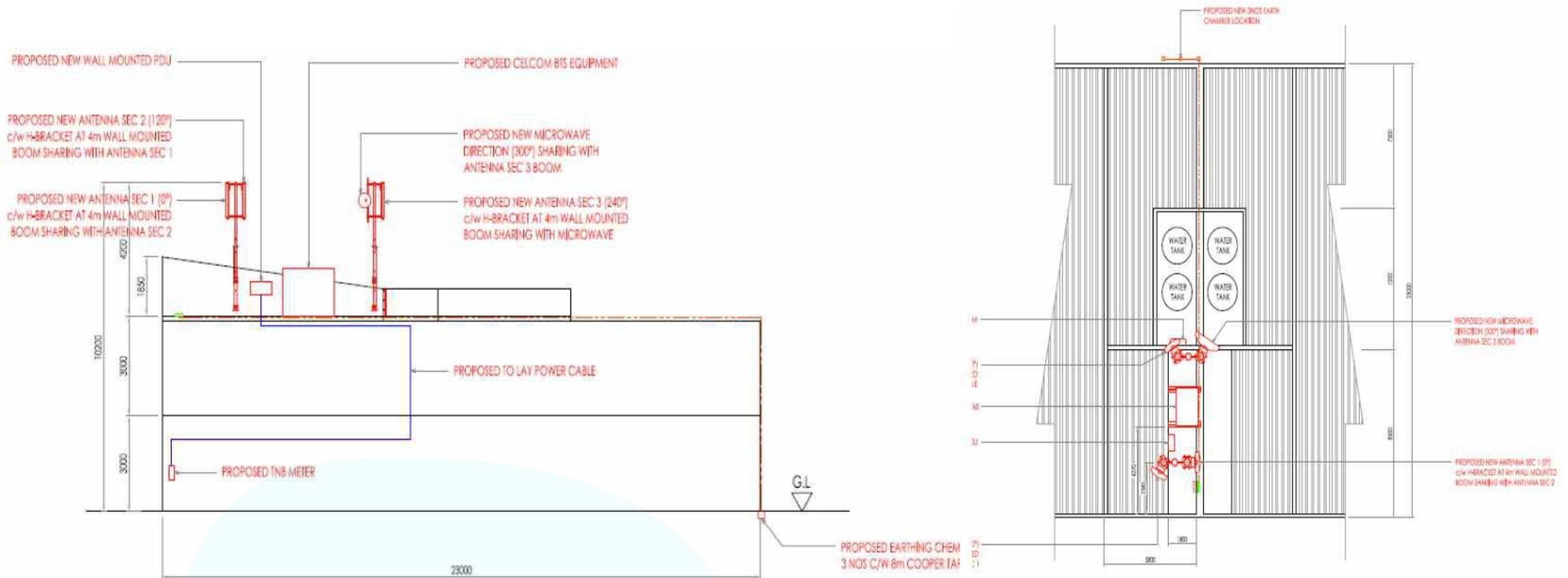
ROOFTOP STRUCTURE

**WALL-MOUNTED, 6M
TRIPOD, UNIPOLE &
CAMOUFLAGE SOLUTIONS**

Rooftop - >4M Boom

ROOFTOP STRUCTURE

ROOFTOP - >4M BOOM





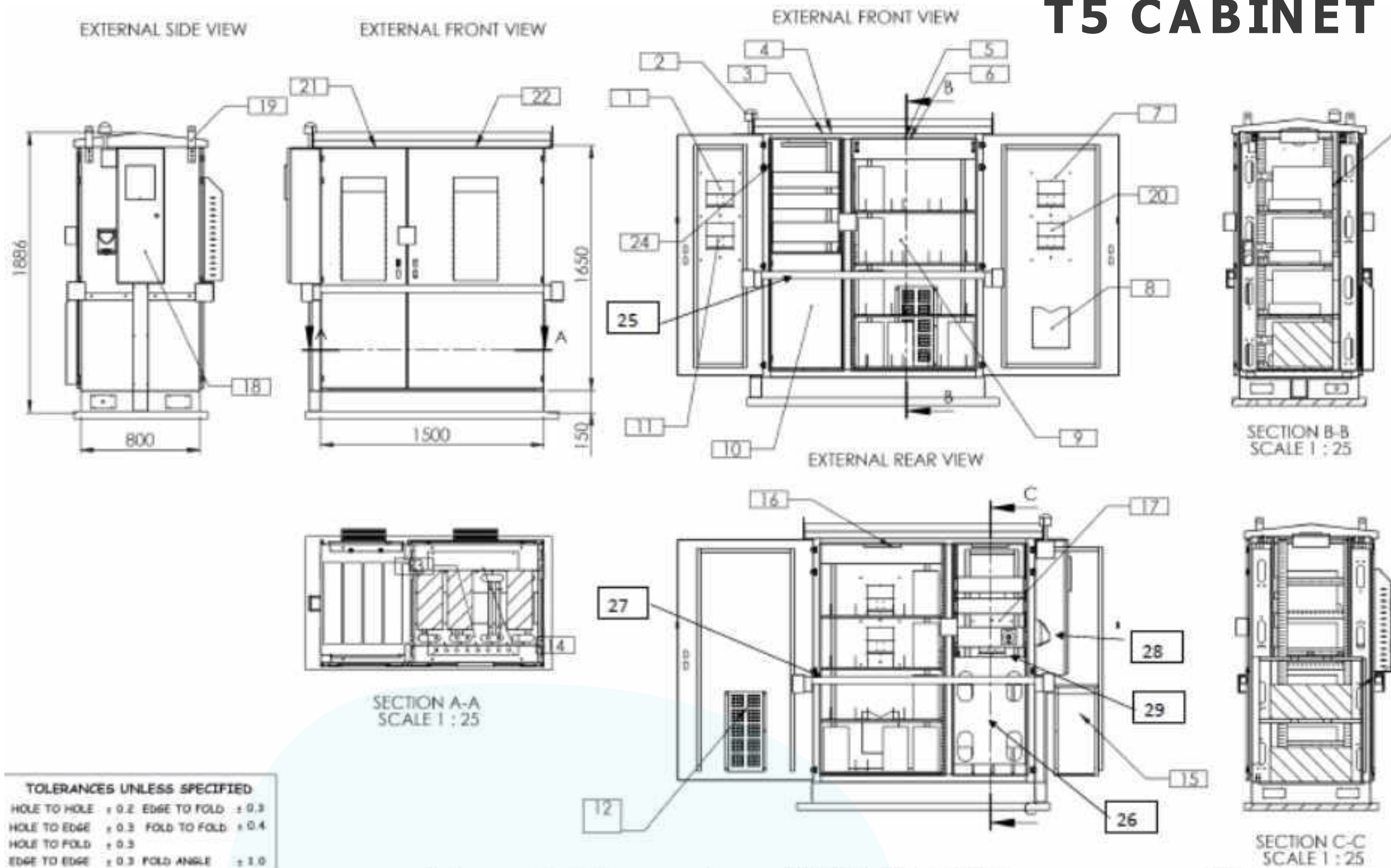
DUO BAY CABINET

**SOLUTIONS UP TO 12
RRUS/BELTING**

T5 Cabinet - 12 RRU Units

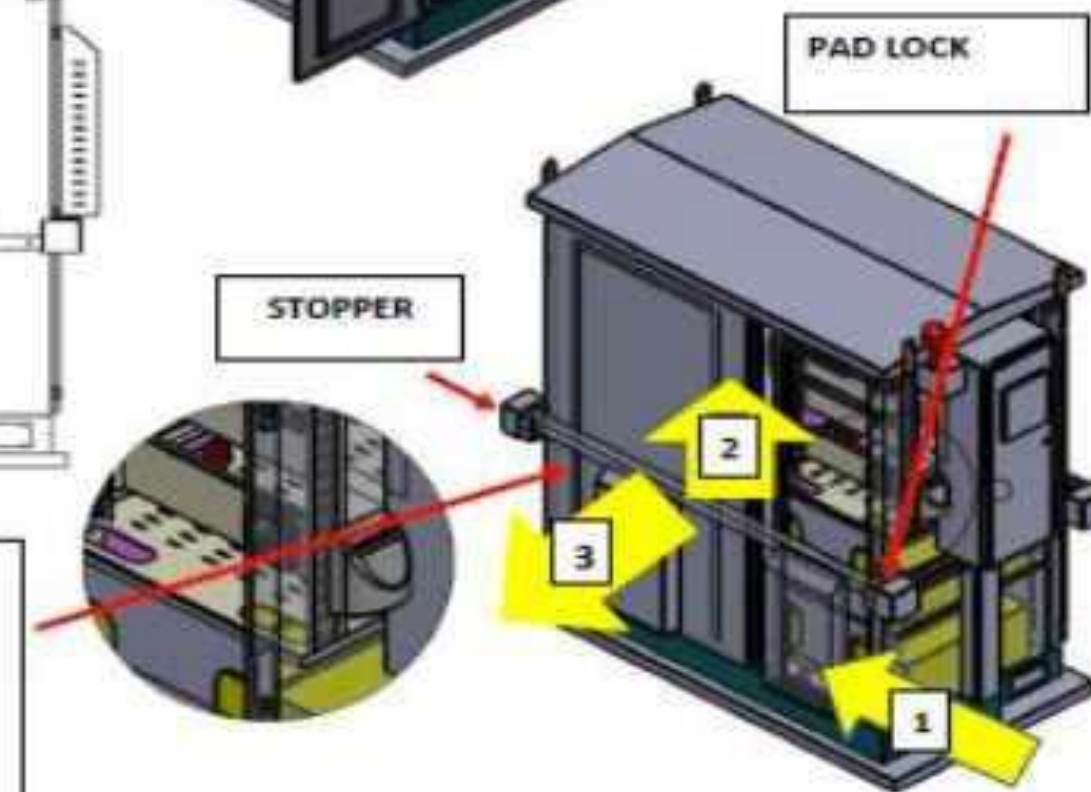
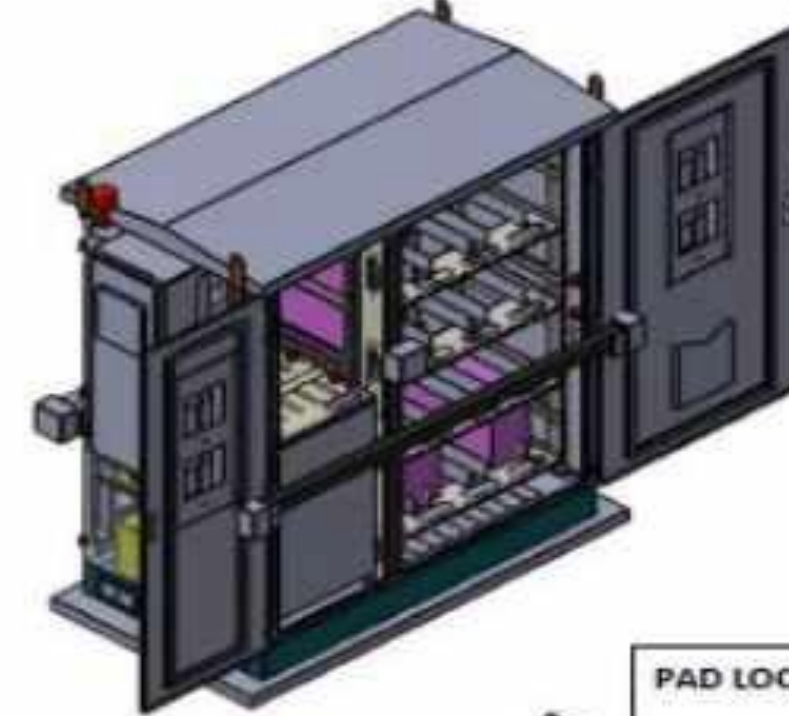
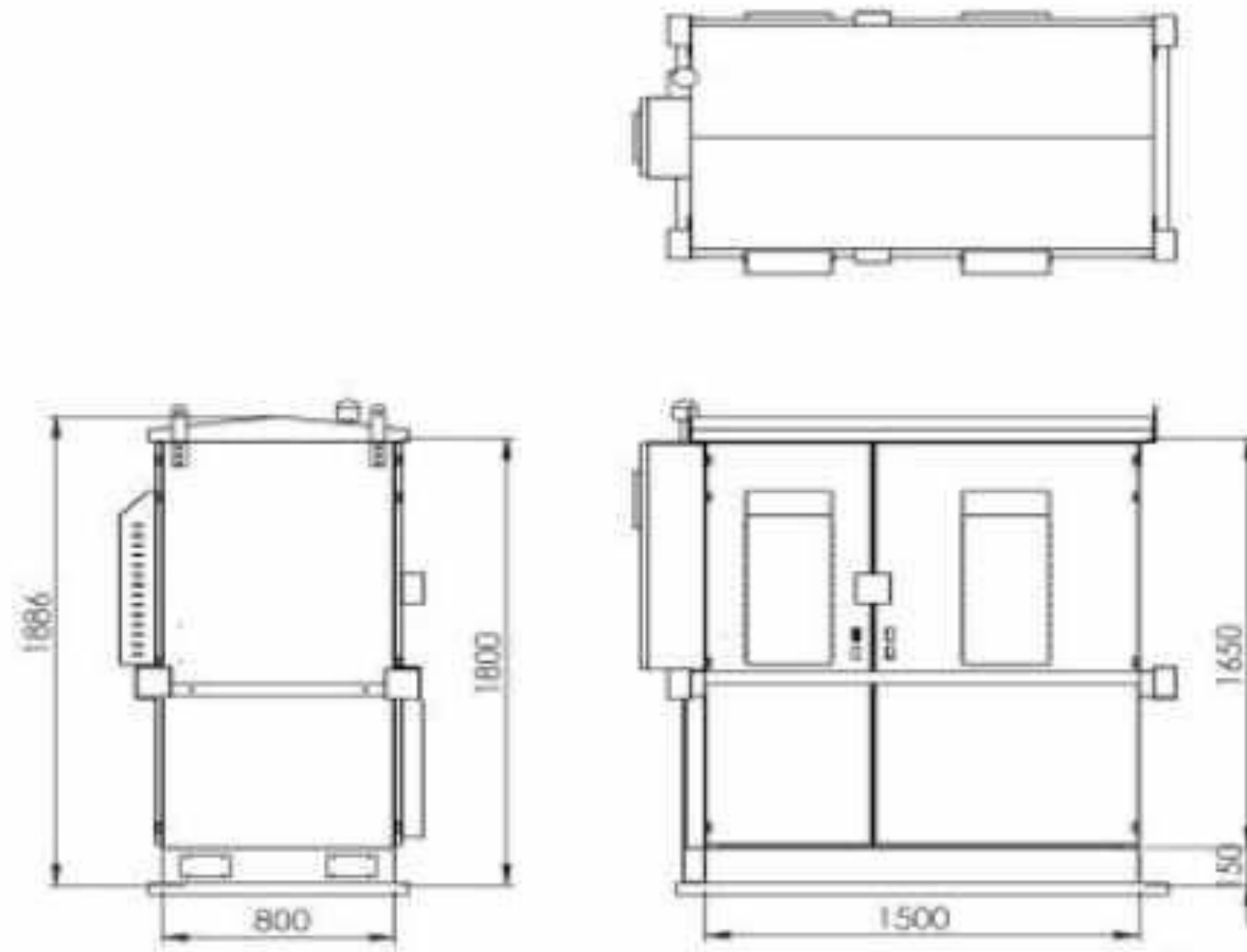
DUO BAY CABINET

T5 CABINET - 12 PRU UNITS



DUO BAY CABINET

T5 CABINET - SPECIFICATIONS



TO OPEN LOCK BAR
Unlock the Padlock Follow the Arrow
STEP 1 push the bar 4 to 5"
STEP 2 Lift Upward
STEP 3 Pull Outwards

DETAIL D
SCALE 2 : 25

TOLERANCES UNLESS SPECIFIED

HOLE TO HOLE	± 0.2	EDGE TO FOLD	± 0.3
HOLE TO EDGE	± 0.3	FOLD TO FOLD	± 0.4
HOLE TO FOLD	± 0.3		
EDGE TO EDGE	± 0.3	FOLD ANGLE	± 1.0



BILLBOARD TELE- COMMUNICATION STRUCTURE

**LAMP POLES INTEGRATED
WITH TELECOMMUNICATIONS
TRANSMISSION SYSTEM**

Byfunctional Lamp Poles

2030



The new concept to enhance the quality of living in the cities by year 2030.

SMART CITY