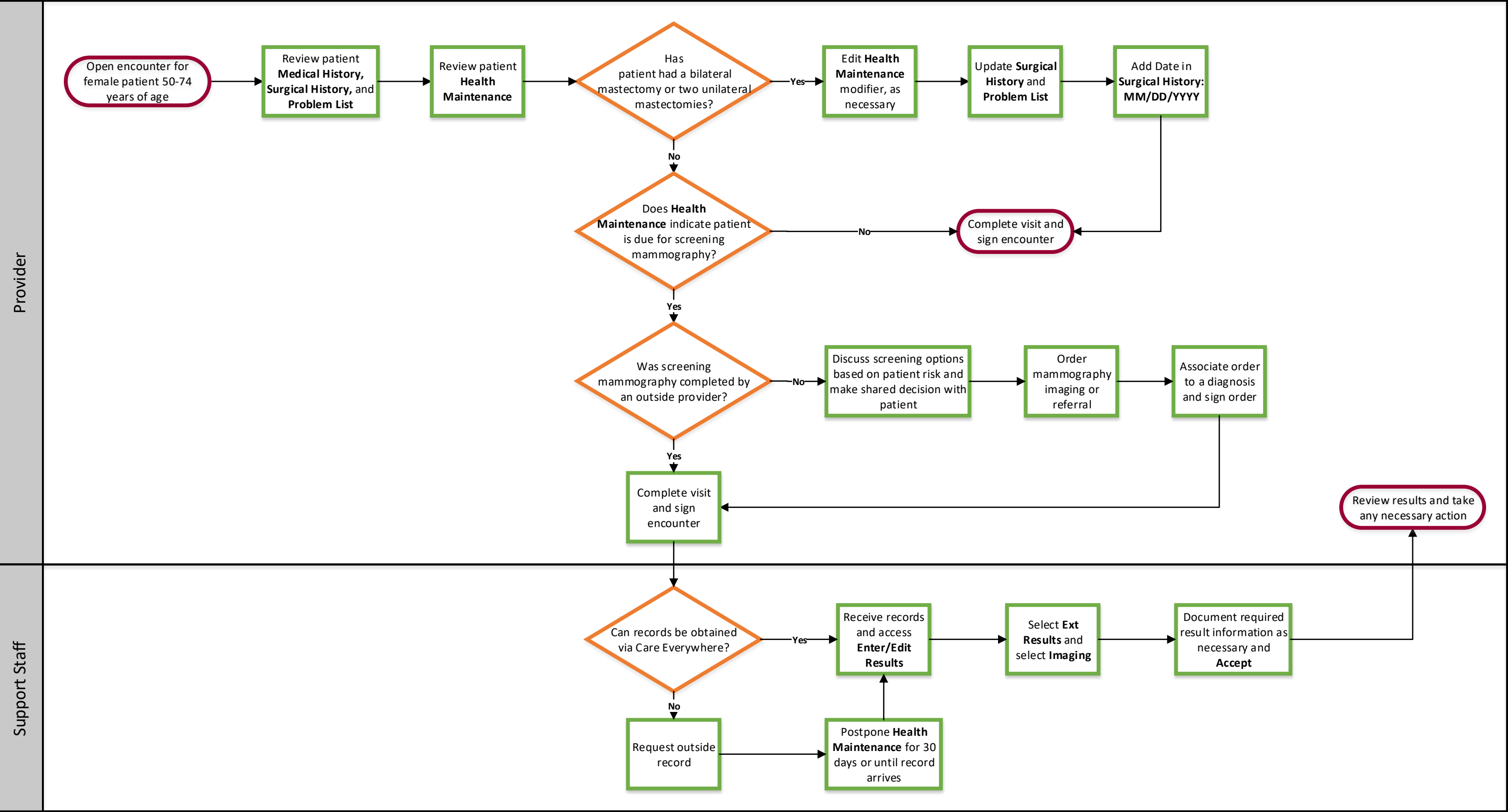


PI/MIPS/UDS: CMS125: Breast Cancer Screening – OCHIN Epic

CMS125v8 NQF 2372 - Percentage of women 50-74 years of age who had a mammogram to screen for breast cancer in the 27 months prior to the end of the Measurement Period.  
July 14, 2020



## **CMS125v5 NQF 2372 Breast Cancer Screening**

### **Description:**

Percentage of women 50-74 years of age who had a mammogram to screen for breast cancer.

### **Denominator:**

Women 51-74 years of age with a visit during the measurement period.

### **Numerator:**

Women with one or more mammograms during the measurement period or the 15 months prior to the measurement period.

### **Exclusions:**

Women who had a bilateral mastectomy or who have a history of a bilateral mastectomy or for whom there is evidence of a right and a left unilateral mastectomy.

For additional information on this measure refer to:  
OCHIN Meaningful Use (MU) Guidebook  
Version 2.0  
November 2017