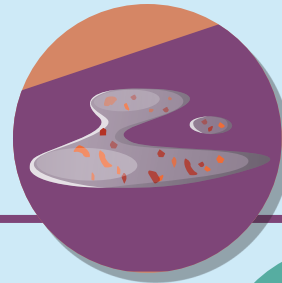


EVS Disinfecting Done Right: Killing Germs on Surfaces

Germs can live on healthcare surfaces for weeks to months, which is why disinfecting surfaces correctly is so important.

1

Check the surface to make sure it does not need to be cleaned first.



2

Read the label of the disinfectant to find out its contact time.

- When using disinfectant wipes, be sure to close the lid so they don't dry out.



3

Apply the disinfectant according to the label's contact time instructions.



4

Reapply if needed to make sure the surface remains wet for the full contact time.



Once the entire contact time has passed, the disinfectant has done its job!

Learn More

Dry Surfaces Infographic: <https://bit.ly/3NsoUtV>
How to Read a Disinfectant Label: <https://bit.ly/4bxqVy7>