



The Composer: Bruce Trinkley

Bruce Trinkley is Associate Professor of Music at Penn State where he teaches composition, orchestration and opera literature, and conducts the Penn State Glee Club. His compositions include incidental music, songs and choruses for theatre and dance productions, and more than two hundred arrangements of folk songs, spirituals and popular songs.

Performance Notes

This piece should be performed in a very lyrical and expressive manner. The optional bell part may be performed on orchestra bells, glockenspiel or celesta.

The Poem: by Sarah Chaffee

Out through the backdoor of my dark house; I let the screen door slam.
Out into the warm summer night I go.

Down the stone steps into the garden, the smell of low tide mixes with the smell of thyme
and mint.

Down around the yellow snapdragons glowing in the backdoor light, I step lightly.

Over the grass cool with dew, I walk far.

Over the flagstone path my bare feet soak in the warmth from the day's sun.

Into the field I make my way, the long grasses brushing my skin.

Into the world of the fireflies, their lights blinking on and off, I travel.

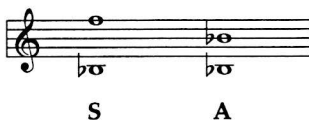
I lie down among the tender grasses.

I watch the stars go silently by, wishing to join their peaceful path.

This poem by Sarah Chaffee was the winner of the annual Sweet Briar College Poetry Contest in 1993. Sarah was a student at the Virginia college at that time. The choral setting was commissioned by the Sweet Briar College Choir.

Permission is granted to print this text in a program along with the following statement: "This poem remains the property of the author."

Range



Commissioned by and Dedicated to
The Sweet Briar Concert Choir,
Jesse Parker, Director, Kevin Hampton, Pianist

Paths

Sarah Chaffee

Bruce Trinkley

Andante con moto ♩=104

opt. Bells

Piano

mp

mp espressivo

5

dolce

mp

unison Out through the back - door of my dark house; _____

con pedale

9

I let the screen door slam. _____

sffz >

sffz >

18

22

22 *cresc.* *f*

smell of thyme and mint.

cresc. *f*

smell of thyme and mint.

f *mf*

f *sonore* *mf*

Sub

26

mf dolce
Down-a-round the yel-low snap - drag-ons glow-ing in the back - door light, —

pp
div. Ah

mp

30

I step light - - - ly. *poco rit.*

light - - - ly. *poco rit.*

mf *dim.*

mf *poco rit.*

35

mf a tempo
O - ver the grass cool with dew, I walk far. —

mf a tempo
O - ver the grass cool with dew, I walk far.

mf a tempo

39

f

I walk far. My feet soak in the

O - ver the flag - stone path my bare feet soak in the

f

rit. e dim. *mf*

warmth from the day's sun. In -

warmth from the day's sun.

f *rit. e dim.*

sonore *rit. e dim.*

47

a tempo

to the field I make my way, the long grass - es brush my skin. In -

p

Oo

a tempo

51

to the world of the fire-flies, their lights blink - ing on and off, I

poco rit.

poco rit.

58 *luminous* *mp* *Meno mosso, espressivo*

trav - el. _____ I lie down _____ a-mong the

luminous *mp*

trav - el. _____ I lie down _____ a-mong the

mf

mf *luminous* *mp*

8vb

63

poco rit. *p* *a tempo*

ten - der grass - es. I watch the stars go

poco rit. *p* *a tempo*

ten - der grass - es. I watch the stars go

dim. *poco rit.* *p* *a tempo*

67

si - lent-ly by, wish - ing to join their peace - ful

pp *ritard*

pp *ritard*

pp *ritard*

Detailed description: This block contains the first system of a musical score, measures 67 through 71. It features three staves. The top two staves are vocal parts with lyrics. The bottom staff is a piano accompaniment. The key signature has two flats (B-flat and E-flat). The tempo/mood markings include *pp* (pianissimo) and *ritard* (ritardando). The lyrics are 'si - lent-ly by, wish - ing to join their peace - ful'.

path. *morendo*

path. *morendo*

p

morendo *espressivo*

Detailed description: This block contains the second system of the musical score, measures 72 through 76. It features four staves. The top two staves are vocal parts with lyrics 'path.' and a *morendo* marking. The bottom two staves are piano accompaniment. The key signature has two flats. The tempo/mood markings include *p* (piano), *morendo*, and *espressivo*. The lyrics are 'path.'.