



INTELLIGENT MONITORING SOLUTIONS

REAL TIME SMART MONITORING FOR EVERY ENVIRONMENT

We are committed to quality, integrity, and customer satisfaction is evident in every aspect of our operations.



TURNKEY
TECHNOLOGIES LIMITED

Tel: +852-2690-4118

Email: info@turnkeytech.com.hk

www.turnkeytech.com.hk



About Us

Cowin is headquartered in Shanghai, with 10 branches across China and wholly-owned subsidiaries in Hong Kong and Malaysia. From our Mont Kiara office in Malaysia, we support fast-growing international operations—delivering over 10,000 completed engineering projects across Southeast Asia, the Middle East, and Africa.

We provide 7x24 technical support with localized rapid response, and our software/hardware work in Chinese, English, and Bahasa Melayu.

Our Journey as a brand



A forward-thinking technology company, Cowin specializes in smart surveillance and IoT-driven monitoring solutions. Our systems help businesses and integrators manage data centres, buildings, and industrial facilities with greater accuracy and efficiency.

Built for reliability and scalability, our end-to-end technologies give organisations clearer insight into their operations while driving better performance and sustainability. By working closely with our clients, we aim to shape safer, greener, and more intelligent environments for the future.

Honourable Clients

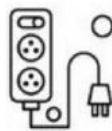
For many years, Cowin Technologies has partnered with leading corporations across diverse sectors including manufacturing facilities, universities, commercial offices, hospitals, and more, to deliver advanced intelligent monitoring systems that enhance safety, strengthen operational reliability, and support seamless digital management. With a proven track record in providing robust, integrated solutions tailored to complex environments, Cowin continues to empower organizations with the technology they need to operate securely, efficiently, and intelligently in an increasingly connected world.



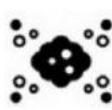
and many more...

COWIN MONITORING SCOPE

We provide intergrated monitoring for :



1. Energy consumption
2. Uninterruptible power supply (UPS)
3. Battery monitoring system (BMS)
4. Generator
5. Important switch statuses
6. Intelligent busbar
7. Lightning arrester
8. Power distribution unit (PDU)



9. Air conditioner & PAC
10. Temperature and humidity
11. Fresh air unit (FAU)
12. CO₂/CO concentration
13. Hydrogen concentration
14. Dust particles
15. Dehumidifier monitoring
16. Water leak



...

17. Smoke detection
 18. Fire detection
 19. Light control
 20. Noise detection
 21. Access control
 22. CCTV
 23. U-slot asset management
- ...



Data Centre Infrastructure Management

DCIM

Problems

- Temperature hotspots and inconsistent cooling that can lead to malfunctions
- Power cuts and voltage instability that put data at risk
- Unauthorised entry and potential intrusions
- Dust buildup may reduce hardware performances and lifespan

Solutions

We provide IDC-level DCIM and smart environmental monitoring for your server rooms with a centralised management of power, environment, security, and asset tracking.

There will also be a clear and intuitive 2D/3D visual layout for quick insight into all infrastructure data

Micro Data Centre Monitoring System

DC BMS

Problems

- Overheating at the cabinet level and inconsistent cooling
- Humidity-related issues that can lead to short circuits and static damage
- Power failures at individual racks that go undetected
- Inefficient capacity planning resulting in limited cabinet space

Solutions

We deliver customized monitoring and management solutions for micro data centres, offering precise rack-level visibility. Our system provides real-time insights into temperature, power, and equipment conditions while helping optimise cabinet space. It supports various rack brands and is designed for quick, hassle-free deployment.



Facilities Monitoring System

FMS

Problems

- Operational blind spots caused by systems that don't communicate
- Slow incident handling due to the lack of centralized alerts
- Uneven safety management across fire protection and security systems
- Unnecessary resource usage driving up operational expenses

Solutions

A Facilities Monitoring System (FMS) unifies real-time monitoring across all facility systems, delivers instant alerts for any irregularities or risks, and consolidates data into one platform to enhance efficiency, strengthen safety, and reduce operating costs.

Environmental Monitoring System

EMS

Problems

- Hidden inefficiencies leading to rising energy expenses
- Human errors and delayed issue detection from manual monitoring
- Unstable energy conditions and compliance-related risks

Solutions

An Environmental Monitoring System (EMS) continuously observes key environmental factors such as temperature, humidity, and air quality, sends automatic alerts on any unsafe conditions, maintains compliance through complete data logging, and replaces manual checks to protect equipment, staff, products, and overall operations.



Power Monitoring System

PMS

Problems

- Undetected electrical irregularities that can harm equipment
- Slow response to failures, increasing downtime and risk of data loss
- High energy spending due to poor load distribution
- Limited visibility that makes capacity planning difficult

Solutions

Our Power Monitoring System (PMS) monitors essential power parameters—including voltage, current, consumption, and quality—alerts instantly on abnormalities to prevent damage, identifies usage trends to reduce energy costs, and centralizes compliance data to support proactive, efficient power management.

IoT Monitoring System

IOT

Problems

- Disconnected devices with weak interoperability
- No centralized control for widely distributed equipment
- Delayed fault detection leading to longer downtime

Solutions

Our system connects all devices into one unified ecosystem for smooth interoperability, centralizes data for better visibility, enables centralized control of distributed assets, and provides real-time alerts plus scalable architecture—improving efficiency, reducing costs, and boosting overall agility.



COWIN PRODUCTS

SCADA Software

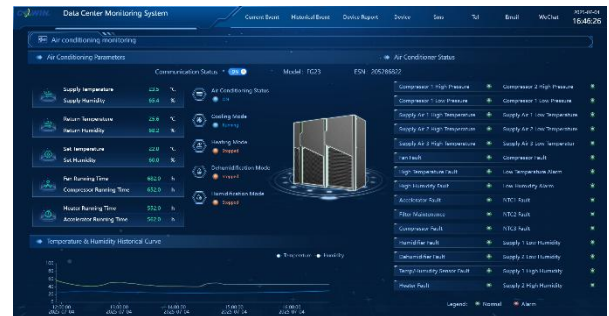


COWIN SCADA Software Homepage

Our in-house **Supervisory Control and Data Acquisition SCADA** system is a professional monitoring system which complies with industry standards

Offering **all-in-one** monitoring with **zero downtime**, rapid remote deployment, an open ecosystem that grows with you, and cost savings compared to tier-1 brands.

System Interface Display



Core Logic:

multi- source data collection → centralized visual monitoring → remote linkage control → historical data scheduling and analysis

Compatibility :

Our system supports both **x86** and **ARM hardware** and is compatible with **Linux/Windows**. It also supports cross-system expansion

Application :



Data Centre
Manufacturing Process
Telecommunication
Fire and Security
Energy Efficient & Power Environment M&E
...





COWIN PRODUCTS

SCADA Software (Linux vs Windows)

Linux		Windows
10.1" HMI Touch Panel PC	Monitor Host	Cowin-RTU / Hosts of other brands
Linux	Operating System	Windows XP/7/10/11/...
Web Pages Mobile Apps HMI Touch Panel PC	View On	Web Pages Mobile Apps Executable File
Simple Projects	Applicable Scenarios	Complex Projects

Brief comparison between Linux and Windows Monitoring Management Software

Monitoring Management software Illustrations



These images are just for illustration, real display may vary across devices

An illustration of how our system may be displayed across devices





COWIN PRODUCTS

Intelligent Monitoring Server



Cowin – RTU (1U)

- **High Reliability:** Dual-partition protection and lossless data compression ensure data integrity, powered by an industrial ARM processor and dual AC220V redundant power for stable operation.
- **Power Failure Alert:** Instantly sends alerts the moment power is lost, allowing immediate response to abnormalities.
- **Strong Adaptability:** Supports TCP, JSON, Modbus, SNMP, MQTT, IEC 104, and IEC 61850 for seamless platform integration.
- **Diversified Alerts:** Delivers notifications via phone call, SMS, email, WeChat, and mobile app.
- **Rich Connectivity:** Offers RS232, RS485, DI, DO, and SNMP interfaces to connect peripherals directly and reduce project costs.

Intelligent Monitoring Server

10.1” HMI Touch Panel PC



- **Integrated Design:** Combines data collection, touch control, display, and alarms into one unified HMI device.
- **Core Architecture:** Built on embedded ARM + Linux for stable and versatile intelligent monitoring.
- **Rich Connectivity:** Provides 4 isolated RS485 ports, 1 isolated RS232 port, Ethernet, and 4 USB ports for secure and flexible device integration.
- **Comprehensive Monitoring:** Supports real-time oversight of power, UPS, PAC, water leakage, temperature/humidity, fire systems, intrusion, CCTV, and access control.
- **Reliability & Management:** Includes a hardware watchdog for auto-recovery, plus strong permission control and log tracking.
- **Data Forwarding & Alerts:** Sends data via SNMP, HTTP, Modbus TCP and issues alerts through email, SMS, WeChat, calls, sound/light, and more.





COWIN PRODUCTS

Intelligent Monitoring Server



Product Features

- Runs on an embedded Linux OS for low power usage, stability, and reliable operation performances.
- B/S architecture with a built-in web server which also allows client to remotely access via mobile devices.
- Equipped with a hardware watchdog for automatic fault recovery.
- Includes full permission controls and detailed log recording.
- Offers multiple data acquisition interfaces for real-time monitoring of on-site infrastructure.

Product Features

- Low-power design with a standard 1U rack form factor for easy installation and space saving.
- Utilizes an embedded real-time operating system for consistent, reliable performance.
- Provides multiple operating modes to quickly network serial devices.
- Supports TCP Real Port/TTY drivers for seamless compatibility with existing systems.
- Transparent transmission options such as TCP Server, TCP Client, and UDP.

Gateway



- B/S architecture with embedded web server for mobile access
- Embedded Linux OS for low power, stable, and reliable performance
- Authority management and detailed log recording
- Supports Modbus, SNMP, MQTT, and other protocols via RS485/TCP/IP
- Easy to install, high-performance, and reliable

Control Module and Sensors

Water Leakage Sensor



Temp-humidity Sensor



SMS Alarm Module



Wireless Temp-humidity Sensor



Lighting Control Module

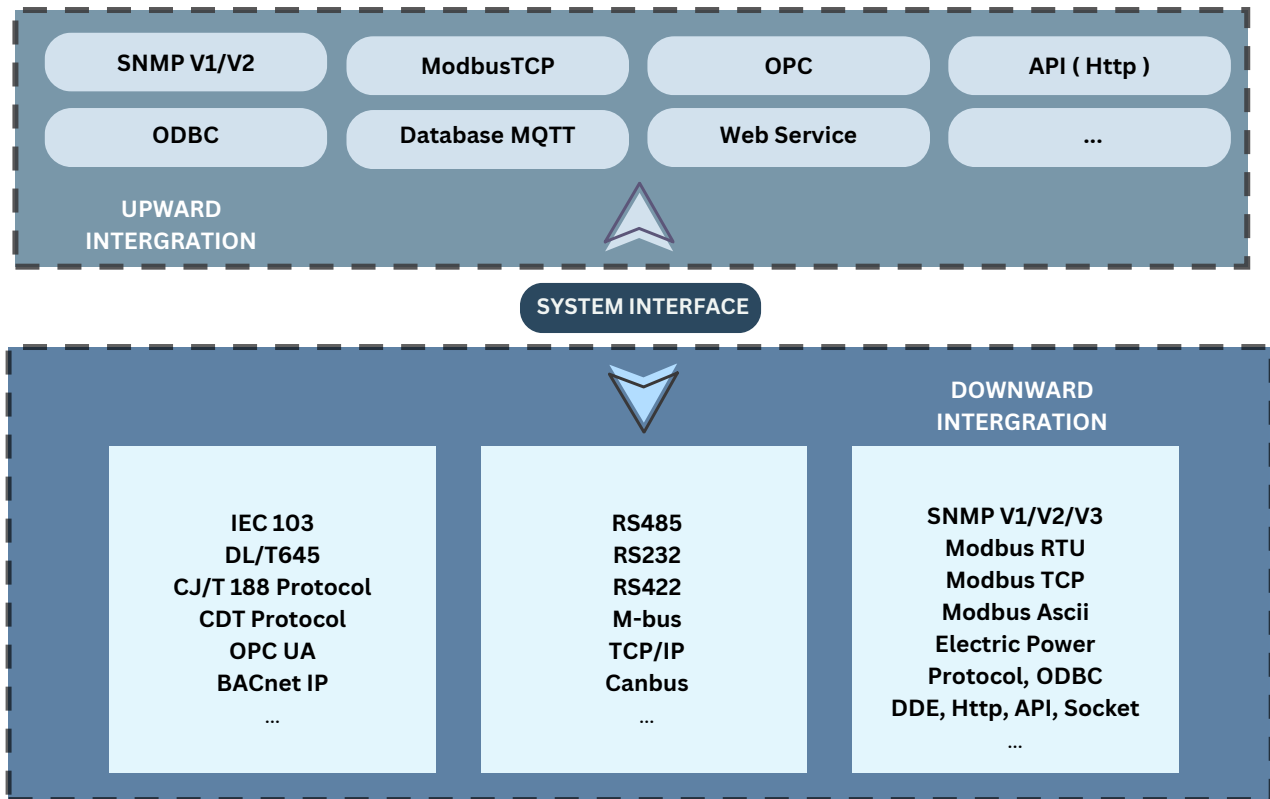


Control Module





System Interface Diagram



Multi-protocol support enables seamless integration and unified monitoring of diverse industrial and security devices, simplifying management and speeding up issue resolution.

Why you should choose us ?

Reliability

- Alarm responses stay under 5 seconds even at full load.
- ARM + embedded Linux delivers efficient, high-performance edge computing.
- Supports Modbus, SNMP, and OPC to avoid vendor lock-in.

Flexibility

- Multi-channel alerts (Voice, SMS, Email, WeChat, WhatsApp, etc.) keep admins informed.
- Customizable monitoring views and backend pages for targeted visibility.
- Multi-language support for smooth global deployment.

Services

- On-site surveys and expert consultation ensure tailored solutions.
- Remote guidance enables fast, seamless deployment.
- Dedicated after-sales and long-term technical support maintain peak performance.



COWIN GALLERY

Our Recent projects

