

# Christ Church Upper Armley CofE Primary School **Newsletter**

## Abbey Trust Primary 100 Words

### Oracy will:

Value your voice

Improve your vocabulary

Develop your language and expression

### WEEK 3

Sequence | Significant | Society



Our Award Winners this week are:

### Headteachers Award

Reception - Alessia and Konito

Year 1 - Ciara and Priscilla

Year 2 - Blessed and Elizabeth

Year 3 - Rume and Trish

Year 4 - Kelvin and Zaynab

Year 5 - Noah and Rebecca

Year 6 - Eesa and Charlie-Joe

### Attendance Prize Winners

Reception - Hannah and Elora

Year 1 - Lara and Sydney

Year 2 - Rose and Iyra

Year 3 - Georgia and Trish

Year 4 - Anny and Tyler

Year 5 - Amin and Arianna

Year 6 - Noah and Damilotun

**Well done everyone!**

### Attendance Matters

We are increasingly noticing a rise in children being collected early from school due to parents/carers having appointments. While we understand that occasionally this may be unavoidable, we are asking for your support in ensuring that children remain in school for the full day wherever possible.

Every part of the school day is important. Lessons continue right up until the end of the day, and leaving early can mean that children miss key learning, instructions for the following day, or important social time with their peers.

*We learn with head heart and hand*

### Year 5 News

Last week, Year 5 enjoyed an exciting and memorable trip to Lineham Farm. During their visit, the children took part in a range of adventurous activities, including bushcraft and climbing. They represented the school's values brilliantly, showing resilience, respect, and resourcefulness throughout all of the activities.



# News from Diocese of Leeds



We are pleased to share that our school is featured in the latest News from the Church of England Diocese of Leeds, following our recent Statutory Inspection of Anglican and Methodist Schools (SIAMS). Our school has been praised as “an oasis of calm, care and love within the community” following its recent SIAMS inspection. Inspectors highlighted the strong Christian values, inclusive ethos and warm relationships at Christ Church Upper Armley CE Primary School, commending pupils for their kindness, compassion and behaviour. The report recognises the school as a nurturing environment where values are not only taught, but lived every day.  
Find out more [here](#)

## Inclusion News - Parental Workshops

We would like to share information about a range of supportive workshops available to parents and carers, covering Behaviour Support, Sleep Support, and Emotionally Based School Avoidance. Please see the following information for details of current workshops and booking information. Places can be booked directly with the providers [here](#). For any queries relating to Special Educational Needs and Disabilities (SEND), please contact us via the school SEND email address [ccua-send@ccuaprimary.co.uk](mailto:ccua-send@ccuaprimary.co.uk).

### Emotionally Based School Avoidance

West Cluster

Please join us for two  
2-hour EBSA workshops on:

Part 1: Wednesday 17<sup>th</sup> June  
Part 2: Wednesday 24<sup>th</sup> June 2026  
(you must attend Part 1 to attend Part 2)

9.15-11.30am  
(arrival 9.15-9.30am)

Christ Church Primary School  
LS12 3NU



Inner West Cluster

Topics discussed include-

Introduction to EBSA.

Understanding safety & Safety behaviours.

How to support your child through co-regulation

Communication & Language

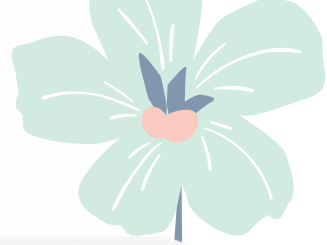
Working together

The 3 R'S

Goal setting & relapse planning.

Please note – these workshops are open to parents/carers from all schools across the Cluster. To book a place please visit our website: [www.bramleycluster.com](http://www.bramleycluster.com)





# Behaviour Support

West Cluster

Please join us for two 2-hour workshops on:

Part 1 – Tuesday 10<sup>th</sup> June  
Part 2 – Tuesday 17<sup>th</sup> June 2026  
(you must attend Part 1 to attend Part 2)

9.15-11.30am  
(arrival 9.15-9.30am)

Park Spring Primary School  
LS13 4QT



Inner West Cluster  
Working together with children, families & schools

Topics discussed include –

Let's Talk Behaviour, what are you seeing?

Identifying Triggers

Emotional Regulation

Teen behaviours

Parenting Styles

Communication and Connections

Strategies to help

Please note – these workshops are open to parents/carers from all schools across the Cluster. To book a place please visit our website: [www.bramleycluster.com](http://www.bramleycluster.com)



# Sleep Support

West Cluster

Please join us for two 2-hour sleep workshops on:

Part 1 – Tuesday 2<sup>nd</sup> June 2026  
Part 2 – Tuesday 9<sup>th</sup> June 2026  
(you must attend Part 1 to attend Part 2)

9.15-11.15am  
(arrival 9.15-9.30am)

Valley View Primary School,  
Coal Hill Drive, LS13 1DD



Inner West Cluster  
Working together with children, families & schools

Topics discussed include –

Importance of sleep

Sleepy foods & sleep diaries

Sleep cycles & recommended sleep

Self-settling & gradual withdrawal

Night wakings, night terrors & reducing naps

Creating positive sleep associations

Developing routines & using visuals to support

Adjusting bedtime timings

Other information & support

Please note – these workshops are open to parents/carers from all schools across the Cluster. To book a place please visit our website: [www.bramleycluster.com](http://www.bramleycluster.com)



## REMINDERS



### Our School Day

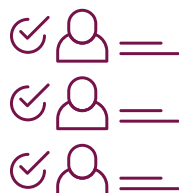
**7:30am** - Breakfast Club (application only)

**8:00am** - Free Breakfast Club (application only)

**8:30am** - School gates open

Children arriving after the gates close, at 8:50am, should come to the office with an adult to ensure they are signed in to get their attendance mark and give their lunch choice.

**3:05pm** - School gates open



### Attendance (absences and appointments)

If your child is going to be absent from school, for any reason, please report this before 9am. We ask that you provide letters/texts about appointments. There are two ways you can report absences and appointments:

by email - [ccua-attendance@ccuaprimarary.co.uk](mailto:ccua-attendance@ccuaprimarary.co.uk) (please do not use any other email to report absences)

by telephone - 0113 2638606 (messages may be left on this number)



### Uniform and Clothing

Please ensure your child's name is in clothing they wear to school so lost clothing may be returned to the correct child.

Our school uniform is available from My Clothing - [www.myclothing.com](http://www.myclothing.com)



### Contact details

Please remember to let us know of any changes for your child's address, telephone numbers, or medical information so that your child's records can be updated.



### Parking

Please help us to keep all our children safe by parking carefully, away from street corners, zigzags and yellow line markings at the beginning and end of the school day. Everyone should be able to see clearly to cross the roads safely.



### School Office

The school office is open from 8am-3:30pm.