

Since 1987



STAINLESS STEEL SPECIALISTS



**MWS
MARCONI**

INNOVATION IN THE HISTOLOGICAL FIELD

MWS MARCONI

Histological table with patented IVD-R certified system

Remote Assistance 4.0

Enables remote diagnostics and software intervention to promptly identify and correct any operational anomalies or issues.

Order management

Handles bidirectional communication with the MES system: the machine receives production orders, processes them, and sends back the actual production data to the MES.

Centralization of instruments

Integrates and coordinates the operation of the instruments connected to the microtome, centralizing their management and reducing manual operator intervention.

Centralization of alarms

Collects all operational alarms within a single interface, allowing immediate supervision and timely action in case of errors or anomalies.

Cold plate

Teflon-coated cold plate with controlled temperature ($-16^{\circ}/-18^{\circ}\text{C}$), used to maintain and cool the histological sample in prismatic form before microtome sectioning (microtome not supplied with the workstation), ensuring stability and cutting precision.

External monitor

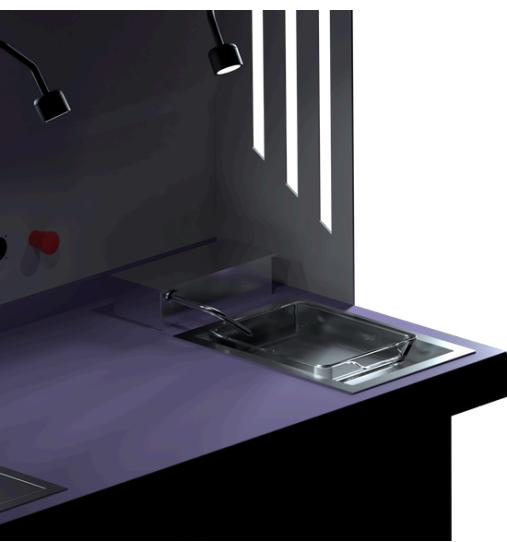
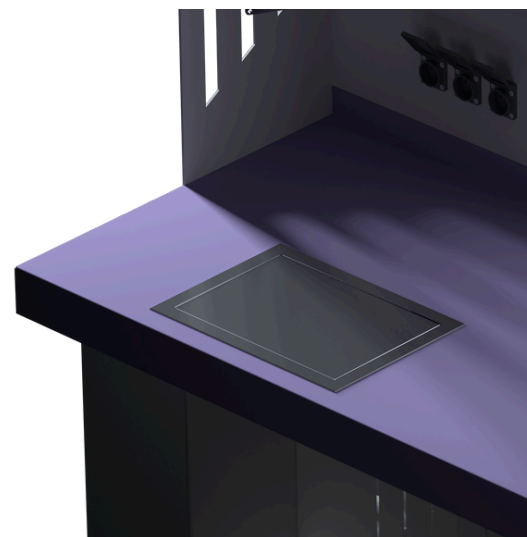
External interface that provides real-time visualization of all process information; it allows parameterization of utilities, monitoring of their operational status, and supervision of system alarms and warnings.

Waste suction

Extracts solid paraffin residues to prevent melting and potential damage to components; the filter is positioned away from heat sources to protect the suction system.

Industrial controller

Next-generation process controller managing machine process automation and data processing through the most advanced industrial protocols available on the market.



Hot Plate & Water Bath

Integrated system consisting of a spreading bath ($42^{\circ}/43^{\circ}\text{C}$) and a drying hot plate ($39^{\circ}/40^{\circ}\text{C}$), used to stretch and fix histological sections after cutting, ensuring uniform evaporation of excess water.

Technical specifications

Height	164 cm
Width	161 cm
Depth	79 cm
Weight	200 kg



Designed and Made in Italy



Via Stradello Morello, 174 - 41019 Soliera (MO) - Italy
Tel. e WhatsApp: 059 561094
mail: info@icaminox.it

