

# WOMEN IN LEADERSHIP NAVIGATING CHALLENGES OBSTACLES &



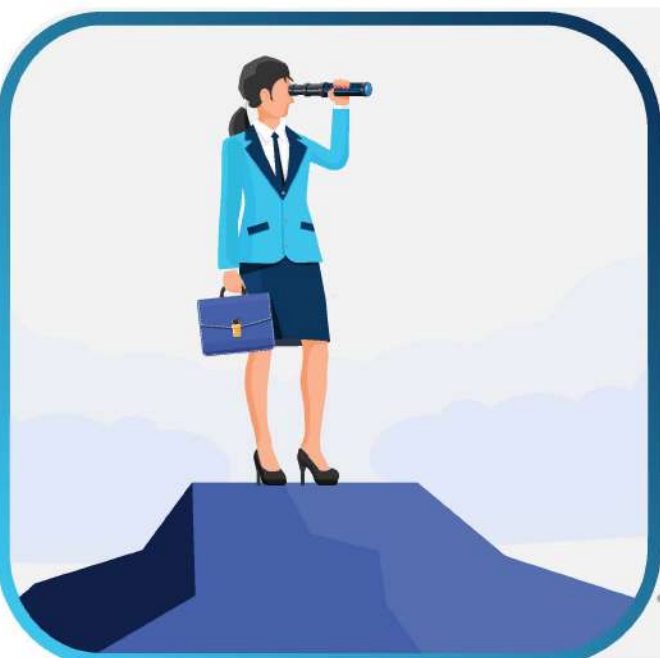
There is a disproportionate number of men in leadership positions compared to women.



Societal biases and sexist workplace cultures perpetuate the gap between men and women in leadership roles, with women often having to work harder for recognition and advancement.



Mentorship and networking are important for women to overcome barriers and gain visibility and opportunities in their careers.



There is a glass cliff where women in leadership positions are more likely to be appointed during crises, meaning they face more precarious conditions than their male counterparts.



In order for organisations to support women in leadership, they must adopt strategies that include creating equitable and inclusive cultures, establishing mentorship programmes, and actively challenging biases.