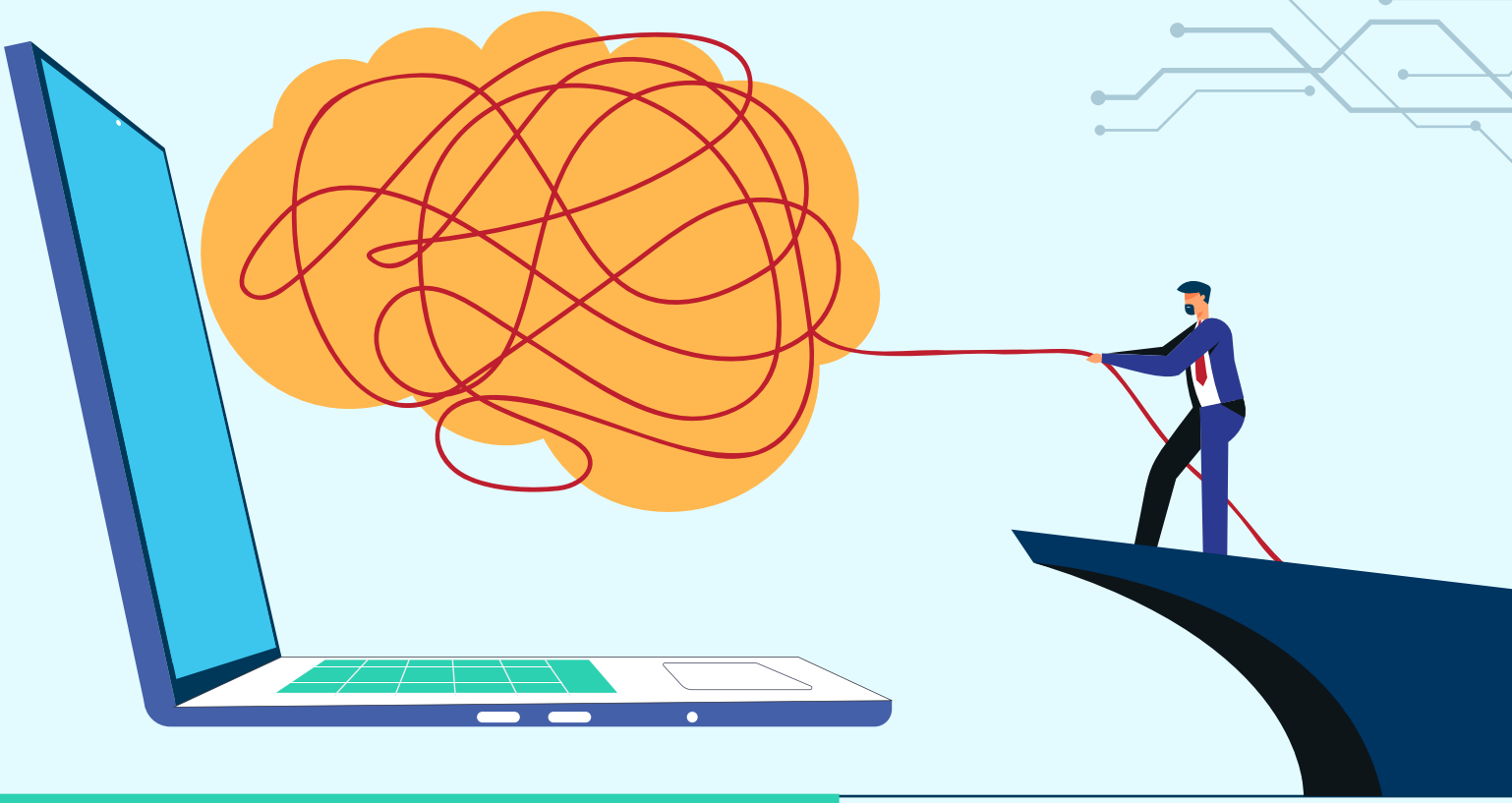


# AI Challenges We Should All Know About



Always cross-check AI-generated content, especially in high-stakes situations, to ensure accuracy and avoid potential errors.

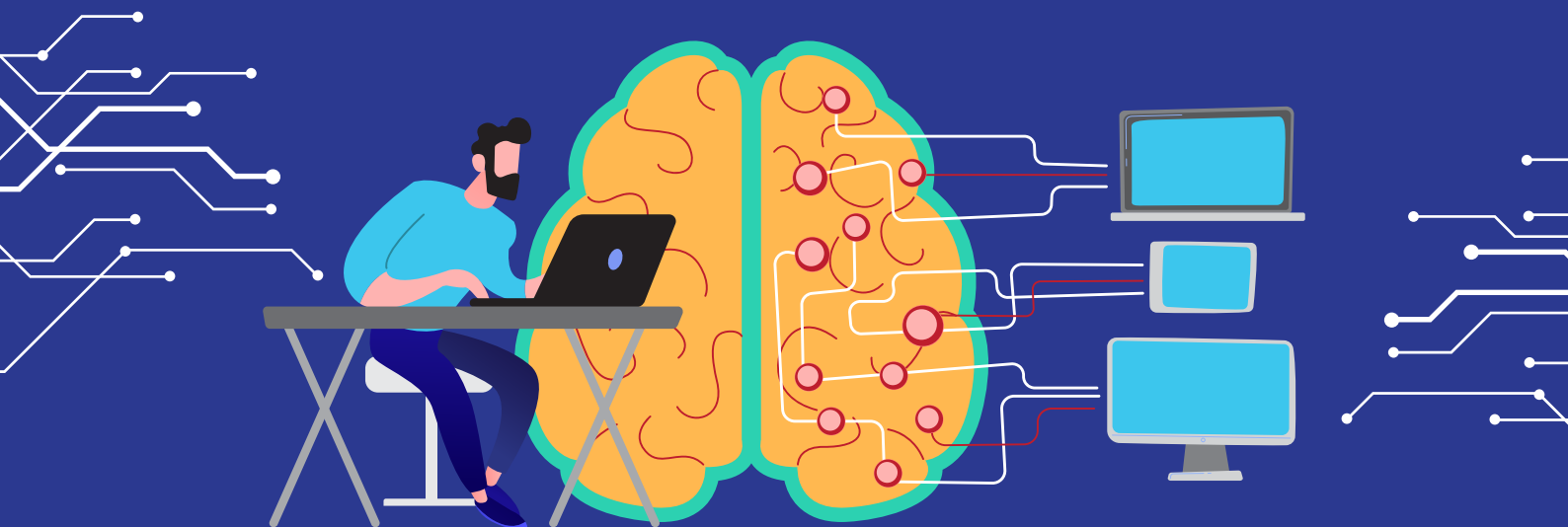


The quality of AI outputs depends heavily on how you structure your prompts. Be clear, specific, and detailed to get the best results.

Don't unquestioningly trust AI. Treat it as a tool that requires your judgement to ensure the outputs are relevant and contextually appropriate.



AI can inadvertently perpetuate biases present in its training data. Review outputs regularly for any signs of bias and adjust as needed.



Break down complex tasks into smaller, manageable prompts. Refine as you go to guide AI towards more accurate and useful results.

