



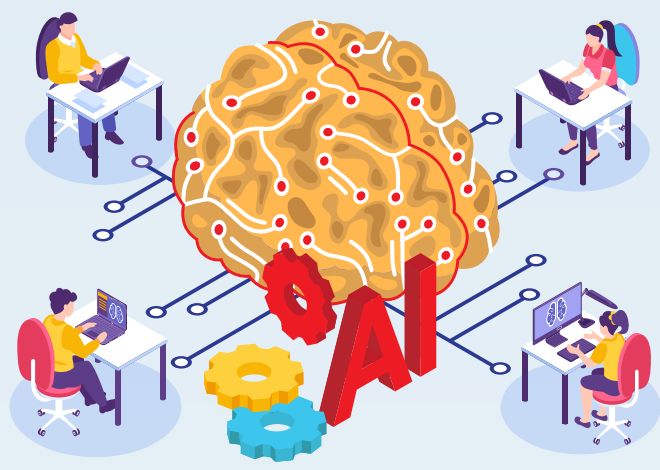
# ANSWERING THE MOST COMMON QUESTIONS ABOUT AI

AI simulates human intelligence through processes like learning and reasoning.



AI learns through algorithms, which are essentially sets of rules or instructions given to a computer to help it perform a task.

The more data the AI is exposed to, the better it can learn and make accurate predictions

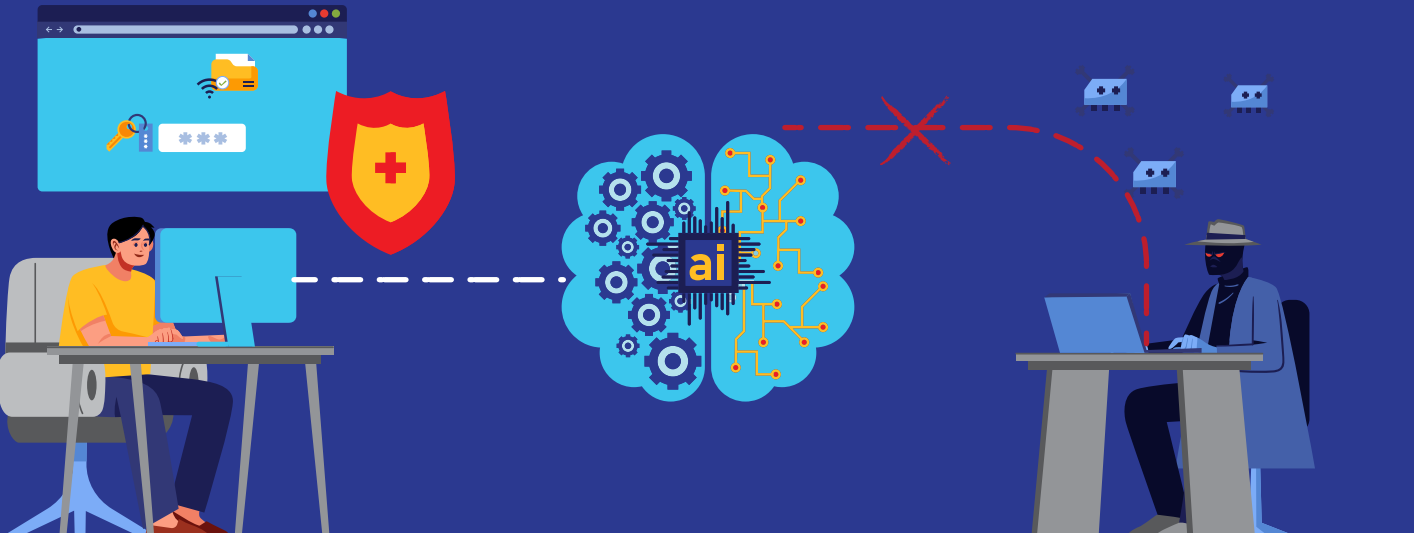


AI can handle repetitive and mundane tasks, freeing up humans to focus on more complex and creative aspects of their work.

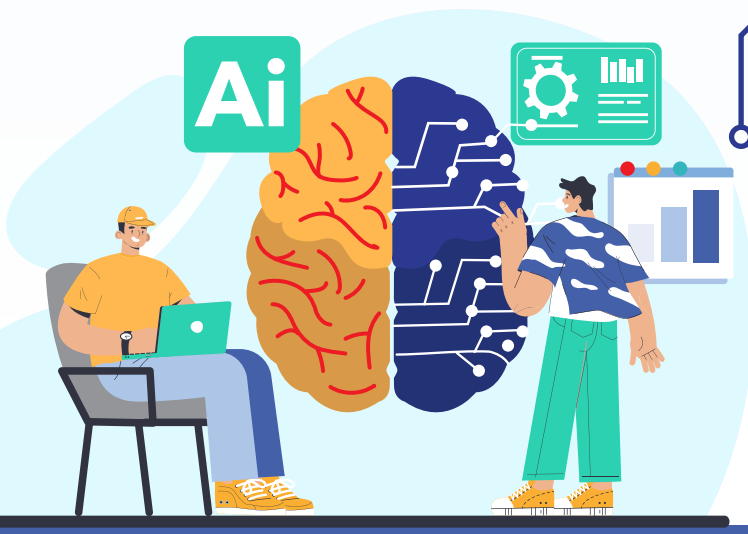
Risks lie in the misuse of AI, such as in creating biased algorithms or deploying AI in ways that harm privacy or security. Responsible use of AI, including transparency, fairness, and accountability, is key to mitigating these risks.



AI can enhance security by identifying and responding to threats faster than humans. Equally, it can pose significant privacy risks if not managed correctly.



A misconception is that AI can do anything. In reality, it's highly specialised and excels in the specific tasks it's trained for.



Before replacing human labour with AI, evaluate whether the AI system aligns with your values, consider the potential impacts, and ensure there's a plan for retraining individuals.