

13.2.26
Issue 21

Lightcliffe C of E Primary School Newsletter

This term's Christian Value is:

Perseverance

"Let us not become weary in doing good,
for at the proper time we will reap a
harvest if we do not give up." Galatians 6:9

Attendance

Attendance this week: 96.3%
6 classes this week have had 97+% attendance
Whole school attendance to date: 96.6 %
This academic year our target is 97%



Lightcliffe 100 – this week's words have been: **Negotiation Objective Odd**

Children's Mental Health Week Danceathon!

Today, our Kindness Ambassadors along with Mrs Gillespie, completed a Danceathon throughout the school day to raise awareness for Children's Mental Health Week and to support the incredible charity 52 Lives. Donations can still be made using the link below, and any additional sponsorship for our Danceathon is very gratefully received. Well done to Mrs Gillespie and the Kindness Ambassadors and thank you so much for your support!

[Gemma Gillespie is fundraising for 52 Lives](#)



Chinese New Year

Tue, 17 Feb 2026 – Tue, 3 Mar 2026



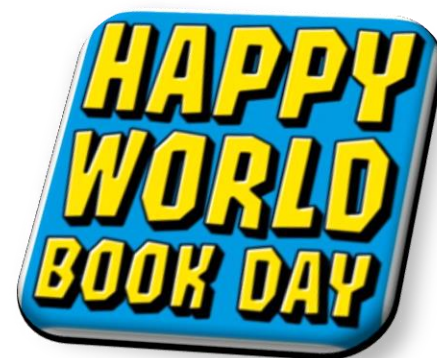
Oliver and Reuben's Chinese New Year Fundraiser for Hove Edge Scout Group

Well done to Oliver and Reuben for their fundraising efforts and we wish them the very best as they continue their fundraising in support of Hove Edge Scout Group.

World Book Day is on its way!

Thursday 5th March.

Check out Class Dojo where Mrs Ball has all the
information for another amazing
World Book Day.



Mrs Dunkley



Mrs Hustler

Upcoming Events

Fri 13 th February	PFSA Tuck Shop
Fri 13 th February	Non-uniform day/Danceathon
Fri 13 th February	School closes for half-term
Mon 23 rd February	School re-opens
Tues 3 rd March	West Yorkshire Cross Country Finals
Thurs 5 th March	World Book day

Inspiring and flourishing together

Upcoming Events

West Yorkshire Cross Country Finals – 3rd March
 Scholastic Book Fair in school – from 11th March
 Rotakids Art Exhibition – 13th & 14 March
 Y5 residential visit to Robinwood – 16th March
 Y2 visit to Yorkshire Air Museum – 19th March
 Annual Music Concert – 20th March
 'Hand to Mouth' Visitors in School – RE day – 23rd March
 Y3 visit to Magna – 24th March
 Y6 Yorkshire Water Visitors in school – 26th March

Looks like a busy half term with lots of enrichment opportunities!

Internet Safety Day - Tuesday 10th February

During Internet Safety day, pupils have learned about how to be safe online in different situations. We do need to remind parents and pupils of the age restrictions of some popular sites, as we are often put in the position of solving problems for pupils following misuse of social media sites at home. The NSPCC website gives further details and support for parents about Internet Safety as well as other issues.



[Keep Children Safe Online: Information, advice, support - Internet Matters](#)
[Keeping children safe online | NSPCC](#)



[Healthy Holidays Calderdale | Calderdale Council](#)

In school holidays, children and young people can access holiday clubs through our Healthy Holidays Calderdale programme. Please see: [Who is eligible?](#). This is provided as part of the Government's Holiday Activities and Food (HAF) programme. The free places are funded by the Department for Education (DfE).



Shrove Tuesday – 17th February
 Ash Wednesday – 18th February

Wishing all our Lightcliffe Community, a peaceful half-term break

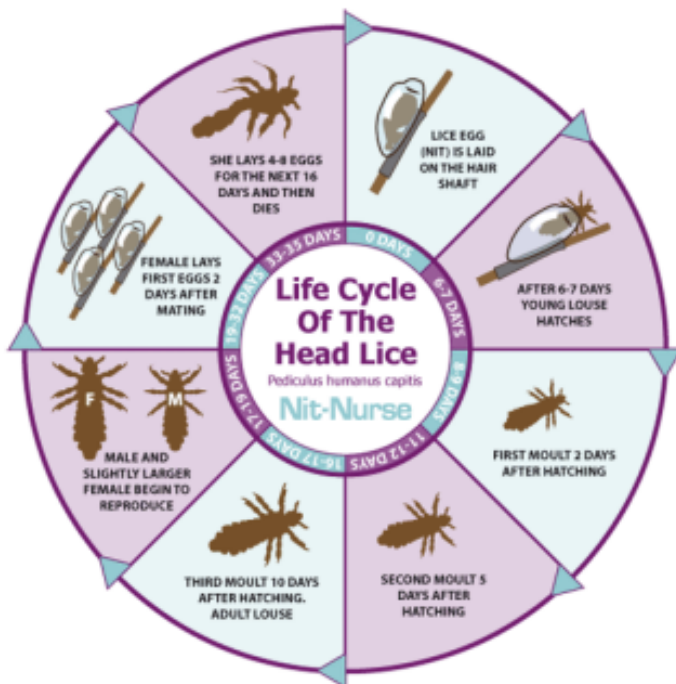
Information for parents following recent outbreaks:

Facts of Lice

- Head lice are tiny, six-legged blood sucking parasites.
- Head lice are able to adapt to their environments and take on the colour of the hair they infest.
- Head lice are primarily spread from head to head contact.
- Head lice do NOT jump, fly, or burrow. Their anatomy makes this impossible.
- A mature female louse lays eggs twice a day and can lay up to five eggs at a time.
- Nits (eggs) are small yellowish-white to dark brown, oval-shaped eggs that are "glued" to the hair shaft at an angle.
- Head Lice have to feed on human blood for survival.
- Head lice do not carry or transmit diseases
- Pets cannot transmit lice.
- Lice leave a scent in the hair that attracts other lice telling them you are a good food source.
- Head lice prefer clean hair, but can infest anyone regardless of personal hygiene.

Recent studies prove that head lice are becoming increasingly resistant to the chemicals and pesticides (which potentially contain neurological toxins) commonly found in over the counter and prescription treatments. Not only are some of these treatments being proven ineffective, they also do not kill the nits. Life Cycle of a Louse

- Head lice will die 24-48 hours after being separated from their human host.
- Head lice will not infest your home the way fleas or bed bugs do.
- The life span for a louse is 30 – 33 days.
- The itching caused by head lice is an allergic reaction to their saliva; 50% of individuals are not allergic and will NOT itch.
- There are an estimated 6-12 million cases of head lice per year.
- A mother with one affected child has a 54% chance of contracting head lice. If she has two children affected by head lice at the same time her chances increase to 87%.



Wet combing

Wet combing is one of the most effective head lice treatments. It can be used without medicated lotions, but needs to be done regularly and can take a long time to do thoroughly.

- Wash the hair with ordinary shampoo. Use plenty of conditioner, (it won't drown the lice but makes them easier to remove).
- Use a wide-toothed comb to detangle the hair.
- Once the comb moves freely, switch to the detection comb. Start at the front of the scalp and comb the hair from the roots to the very end.
- After each stroke, examine the teeth of the comb for lice. Remove lice by wiping or rinsing the comb.
- Work methodically through the hair, section by section, so that the whole head of hair is combed through.
- Rinse out the conditioner and repeat the combing procedure in the wet hair.
- Repeat the procedure on days 5, 9 and 13, so that you clear young lice as they hatch, before they have time to reach maturity.

ADVENTURE DAY CAMP

9AM - 3:30PM



Mon 16th & Tue 17th February

£25

1 Day

£45

2 Days

*SIBLING DISCOUNT & EARLY (8:15AM) DROP OFF
AVAILABLE*

LIGHTCLIFFE PRIMARY SCHOOL
HX3 8SH

TO BOOK, PLEASE TEXT OT WHATSAPP 0794 959 7032 (JOE)
OR 0786 864 0602 (LUKE)

WHAT TO BRING

- ✓ Suitable sports clothing for indoor and outdoor activities
- ✓ Trainers
- ✓ Football boots (optional)
- ✓ Water bottle
- ✓ Packed lunch (**nothing containing nuts**)
- ✓ Healthy snacks (**nothing containing nuts**)
- ✓ Medication if required

WHEN BOOKING

PLEASE SEND THE FOLLOWING DETAILS

- ✓ Child's name
- ✓ The camp they are attending
- ✓ Dates attending
- ✓ Medical Information
- ✓ Emergency Contact
- ✓ If you are requesting early drop-off/late pick-up

Thanks for your continued support - we look forward to welcoming everyone to a week of sport, fun, and unforgettable memories.