



19<sup>th</sup> December 2025

# Newsletter

Congratulations to those children who received this terms Peace Awards

Suki, Lulu, Zak, Sophia, Mary, Rosie and Isaac

I think it's fair to say it's been a bumper couple of weeks with so much going on as you can probably tell from the photographs! We have had nativities, carol concerts, Santas grotto and as you can see some end of unit science activities including making soup and windmills. It's no wonder we are all exhausted.

Wednesday saw Christmas dinner day which was a huge success; thank you for our caterers for being able to accommodate the last-minute requests for a Christmas dinner. Children were very excited when they noticed a special guest who helped serve the dinner 😊.

Thanks also to FOSC for organising our Winter Warmer last Friday and for supporting in school today in the grotto when we were surprised by another special guest. I wonder if you know who that might have been?



This year during advent, we have been developing our links with local communities and charities and it has been heart-warming to see how our children respond to these opportunities. We have taken children to St.Chad's Lunch Club, the Manor Care Home and Alexandra Court Care Home to sing and share festive cheer. As you know our children took part in an Elf Run to support Simon on the Streets. They have also made cards and gifts for Home Instead a fabulous company that works within our community to provide care and companionship to seniors who are lonely, especially at this time of year. Children showed such care and thought in their messages to the recipients of the cards and gifts.

As the term comes to an end, on behalf of all the staff we wanted to say a huge thank you for your continued support. Wishing you all a wonderful and safe Christmas. See you all next year!

*Guia Marsland*



## Cancellation of St. Chad's Church Service

My sincere apologies for having to cancel the service. This has not happened before in my time at St.Chad's either

since I returned in January 2023 or when I worked here before. I am sure the most frustrating aspect was the 'last minute' cancellation. We thought we had been lucky as the weather had been kind to us all morning, and the heavy rain started as we were getting ready to leave. We had to consider the risk of children and adults falling on the journey as we go through a 'wooded' area to get to Church amongst a number of other factors.

We will of course reflect on the cancellation (and the timing of this), and what steps we can take next year to be more prepared for a 'plan B' option. Hopefully, we will not need a Church Service Option 1 and Church Service Option 2 reserve date as we use for sports day!

I have written to all the children who had practised hard and were looking forward to reading in Church.

Thank you for your understanding.

# St Chad's CofE Primary School **Newsletter**



The school choir have been very busy spreading Christmas cheer. We have visited St Chad's lunch club, singing before their Christmas lunch. We also travelled to Horsforth Manor care home to sing for the residents there and our children then took their time to speak to the residents and wish them a Merry Christmas.





# St Chad's CofE Primary School **Newsletter**



On Tuesday 16th December, everyone across school took part in the 'Elf Run'. With their iconic red and green hats adorned, children (and staff!) jogged, walked and ran laps of the playground in aid of Simon on the Streets. If you would like to donate or find out more about this charity, please follow the link at the foot of this page.



**OUR VISION**



**PROVIDING HOPE FOR  
THOSE WITHOUT A VOICE**

We offer unlimited emotional and practical support for homeless and vulnerable people to enable them to achieve their goals.

[https://www.justgiving.com/page/stchadscofepprimaryschool-simononthestreets?utm\\_medium=FR&utm\\_source=CL](https://www.justgiving.com/page/stchadscofepprimaryschool-simononthestreets?utm_medium=FR&utm_source=CL)





Our Reception children were inspired by the 'Elf Run', so we decided to keep our hats on for a little bit longer! The children enjoyed a "hilarious" Christmas story, according to some of the Reception boys, in the forest. They also took part in some fun 'elfersize' after the run, exploring lunging, stretching and star jumps.





# St Chad's CofE Primary School **Newsletter**



Year 2, Year 3 and Year 4 visited Alexandra Court this week to spread Christmas joy and cheer. We sang lots of carols and Christmas songs for the residents and gifted them cards to show them how much we care.

Thank you to all the parent volunteers who supported during this trip – we appreciate you!



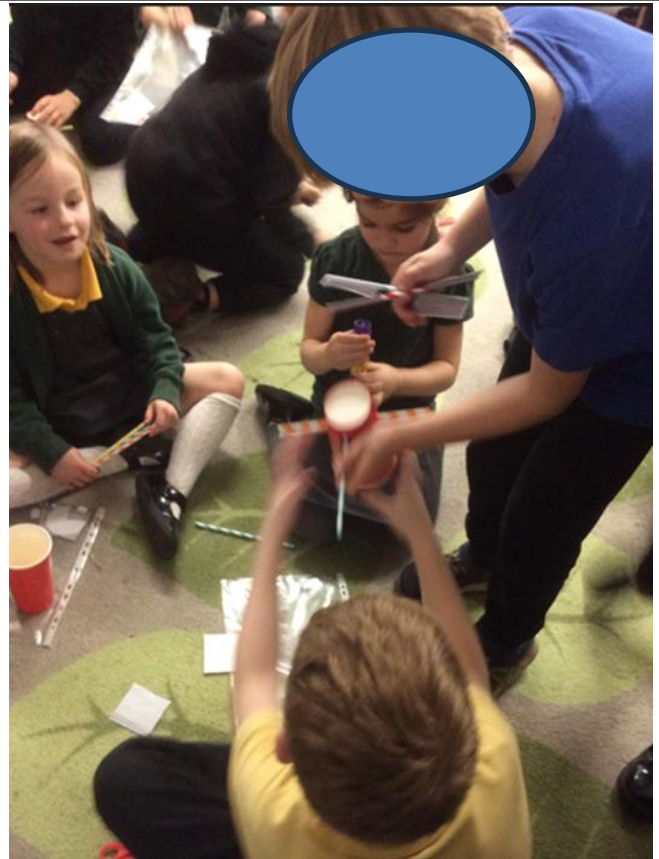
"We went to sing Christmas carols at the care home because it's a **kind** and **thoughtful** way to share joy. Some of the people who live there might not have many visitors and hearing us sing might make their day feel **special**. Our songs can help them feel included in the holiday spirit and it reminds them that people **care** about them. By singing for the residents, we are spreading God's love and light,. Our songs can remind them of **hope, kindness, and the true meaning of Christmas.**"



# St Chad's CofE Primary School **Newsletter**

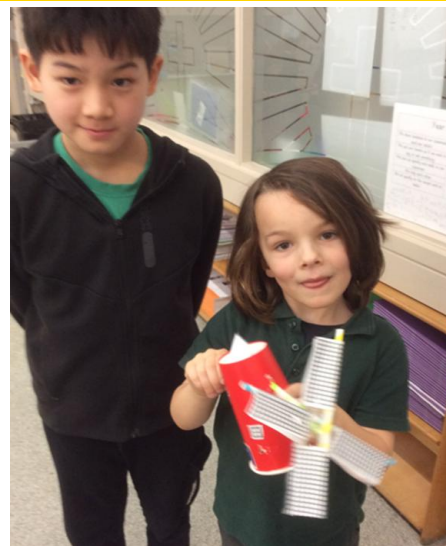
In Years 1 and 5 this week, we collaborated on the Year 1 Design and Technology unit of work, "Windmills".

The fabulous Year 5s were super kind and helped the Year 1s to assemble their windmills into working models. The children were a delight to spend time with, watching lovely compromising, sharing and turn taking skills. Well done to all the children! Mrs Nicholls and Mrs Rhodes were so impressed that the children worked so well – you made us proud to teach at St Chad's!





# St Chad's CofE Primary School **Newsletter**





# St Chad's CofE Primary School **Newsletter**



To conclude Reception's exploration of their senses, the children worked together to design, prepare, make, and taste their very own vegetable soup! The children washed, peeled, and chopped all of the vegetables; they did amazingly. After tasting it themselves, we decided to share it with other members of staff around the school and even our families.





Thank you to families who signed up for our after-school clubs.

We are pleased to confirm that a number of clubs will be running next half term. Unfortunately, a small number of clubs did not receive enough sign-ups to run and will not be going ahead next half term. These clubs may be reviewed again in future terms.

For **external clubs**, facilitators will contact families directly to confirm arrangements. For **internal clubs**, the school office will be in touch shortly with further details.

If you have any questions, please contact the school office or a member of SLT. Thank you for your support!



## Online Safety Alert: Risks of JustTalk App

**ONLINE SAFETY ALERT:**

 **JUSTALK  
APP RISKS**

We want to make parents aware of growing concerns around the JusTalk app.



- Free messaging and video-calling platform
- Risks of harmful content and contact with strangers
- Profile details can be easily shared

**Check if your child is using JusTalk and make sure they stay safe online.**



As we approach the holidays, we want to remind parents about the importance of monitoring children's online activity. Apps like JustTalk may seem harmless, but they can expose young users to risks such as contact with strangers, inappropriate content, and sharing personal information.

Please check your child's app usage regularly, ensure privacy settings are enabled, and talk to them about staying safe online. For more guidance, visit [How safe is the JusTalk App? - Safer Schools NI](#). At school, we will continue to educate and talk to children about staying safe online.

## Supporting Maths Reasoning at Home

To help children build strong problem-solving and reasoning skills, we've gathered a selection of free, high-quality online maths resources that you can use at home. These sites offer games, challenges, and reasoning activities suitable for all primary ages. **This is not instead of homework but in case parents would like extra maths activities.** We hope you find them helpful for practising key skills in a fun and engaging way!

[Home](#) | [NRICH](#)

[Fun maths games and activities - Oxford Owl for Home](#)

[Maths Games for KS2: designed by a teacher for teachers - Mathsframe](#)



[www.leedslocaloffer.org.uk](http://www.leedslocaloffer.org.uk)



[@Leeds Local Offer](https://www.facebook.com/LeedsLocalOffer)



[LLO@leeds.gov.uk](mailto:LLO@leeds.gov.uk)

## SEND PARENT CARER INFORMATION DROP IN

Date	Time	Venue
Wed 14 <sup>th</sup> January	10.30 till 12.30	Swarcliffe Community Hub, Leeds, LS14 5LS

### Services in attendance:

- Leeds Local Offer
- SENDIASS
- Carers Leeds
- Child Health and Disability Team (CHAD)
- Leeds Parent Carer Forum
- Speech and Language Therapy Service
- SEND Coordinators, Family Hubs

**Let us know if you will be  
attending the drop in**

<https://surveys.leeds.gov.uk/s/InfoDropIn/>



**If you would like more information about the drop in sessions email  
[LLO@leeds.gov.uk](mailto:LLO@leeds.gov.uk)**





## What you might want to speak to each service about



- How to find out about SEND services in Leeds
- The Leeds Local Offer website and events
- Signposting to SEND services



- SEND support in mainstream schools
- Preparing for SEND meetings
- Education, Health and Care (EHC) needs assessments and plans
- Mediation and SEND tribunal appeals
- Specialist schools, settings and provisions
- Preparing for adulthood
- Preparing for educational transitions
- SEND funding
- School transport



- How to have your voice heard in Leeds.
- How we represent the voices of parents and carers.
- Events and sessions for families.



- Benefits advice and support (DLA and PIP)
- Emotional support around parent caring role



- What support do CHAD offer?
- How can children access specialist care packages?
- What is the threshold for CHAD social worker involvement?
- General questions or queries about social care?
- How to make a referral?



Our family hubs provide a welcoming space where families with children and young people (0 to 19 years, or up to 25 years for young people with special educational needs and disabilities) can access support, advice, and services in one convenient location.



- Support with communication
- Support with eating, drinking and swallowing

## **Swarcliffe Community Hub**

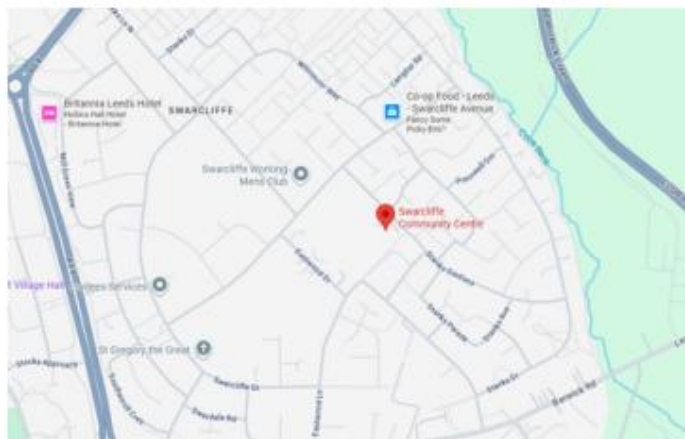
65 Stanks Gardens, Leeds LS14 5LS



### **Travelling by bus**

Take the number 56 bus which will take you to Stanks Lane North. Swarcliffe Community Hub is a 4 minute walk from the bus stop.

The Swarcliffe Community Hub is situated at Swarcliffe Community Centre. When you enter through the main entrance you will be shown to the drop in.



### **Travelling by car**

Swarcliffe Community hub is situation at Swarcliffe Community Centre.

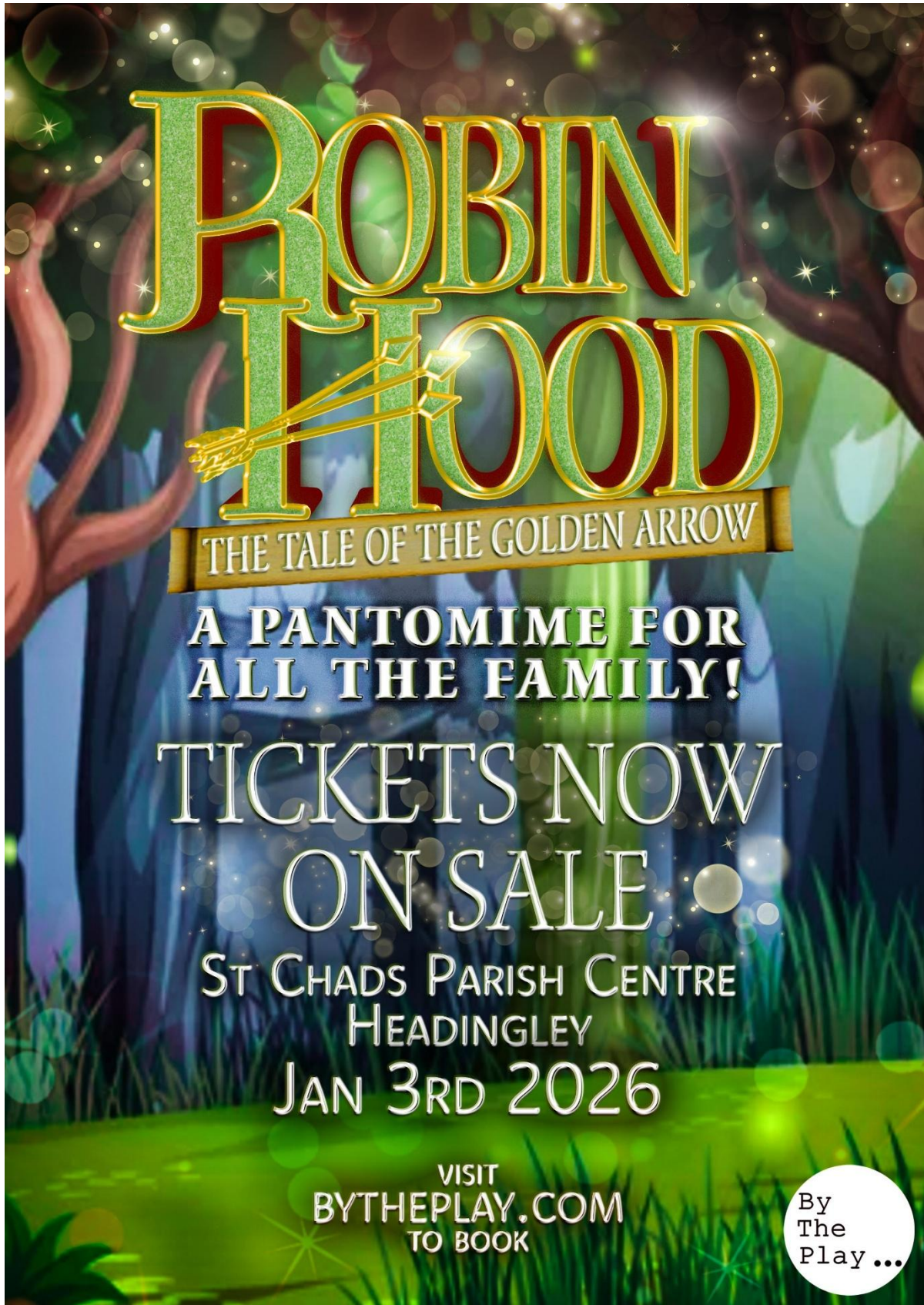
Swarcliffe Community Centre is located just off Stanks Gardens, and is an 16 minute drive from Leeds City Centre. There is a car park available.

Use the venue post code in your navigation system (LS14 5LS)



St Chad's Parish Centre

St Chad's Parish Centre are having a fundraising pantomime on Saturday 3rd January 2026. There are two performances at 1pm and 5pm and ticket prices are £12 adults and £9 children - a bargain and a great family activity to do before heading back to school after the Christmas break



## SCHOOL MEALS

Orders must be placed on [www.parentpay.com](http://www.parentpay.com) by 3.30pm on a Friday for the following week. If meals are not ordered a packed lunch must be provided. Thank you for all your support with this – it really makes a difference.

## LOST PROPERTY

Any named lost property found has been returned to classes. I hope that you were re-united with some uniform which was out on display during the recent parent consultations.

Lost property will continue to be stored in the boxes outside of school.

We have some stocks of spare uniform so please do let school know if you need any uniform and will from time to time put this on display and please take what you need.

## PE KIT REMINDERS

Unfortunately, children are still not adhering to the PE kit uniform. We continue to see an array of coloured tops, shorts and many branded t-shirts and sweatshirts. The uniform is as follows:

- Black PE shorts/jogging bottoms
- Plain round necked t-shirt in team colours
- Plain sweatshirt in team colour, bottle green or black (no branded items).



We are still seeing colourful and branded sweatshirts. Please support with this.





## Great News!

In partnership with our cluster of schools and PE Partner, there are 7 fantastic activity clubs a day running at venues across the city on December 22nd and 23rd. The clubs will be a great mix of fun games; sports; music; crafts; dance; play; wild activities and exciting adventures with qualified and DBS certified coaches and are simply a brilliant way to keep children entertained and active during the school holidays.

### WINTER HEALTHY HOLIDAYS ACTIVITY CLUBS Dec 22nd & 23rd.

22/12/25 - Activity club	23/12/25 - Activity Club
Host school	Host school
Holy Rosary and St Annes (LS7 4AW)	Holy Rosary and St Annes (LS7 4AW)
Chapel Allerton Primary School (LS7 3PD)	Chapel Allerton Primary School (LS7 3PD)
Morley Victoria (LS27 9NW)	Birchfield (LS27 7HU)
Hunslet St Marys (LS10 2QY)	Hunslet St Marys (LS10 2QY)
The BEAT building (LS5 3PX)	The BEAT building (LS5 3PX)
Coop Academy Nightingale (LS9 7AX)	Coop Academy Nightingale (LS9 7AX)
Oulton Primary School (LS26 8NT)	Oulton Primary School (LS26 8NT)
<b>All clubs run 9.00am to 3.30pm and are for children aged between 5 and 11 years old.</b>	

How to book:

Children who are eligible for **income related free school meals** will get **100% funding support** to attend and will have lunch provided. If that applies to your child, all you need to do is register for a place here:

<https://healthyholidays.leeds.gov.uk/> If you are already registered, please go to the website to book.

If you have any issues with setting up your account, adding your children, or booking sessions, please get in touch with the Healthy Holidays team by emailing [HHBooking@leeds.gov.uk](mailto:HHBooking@leeds.gov.uk)

If your child is not eligible for income related free school meals, the cost is £20 per day per place (if booked before Monday 15th December, when prices go up to £22 per day) and places can be booked with PE Partner directly at [www.pepartner.co.uk](http://www.pepartner.co.uk) or by calling 01133226115

Places are limited and available on a first come first served basis.

**SEND** - If your child would require 1to1 support to attend, please call us on 01133226115 as we do have a limited amount of staff and need to plan this accordingly so that all the children can have a positive experience.

**TRIPS** - We will also be running 12 bus trips over the Christmas period. Information about the trips will be sent out in the coming days.



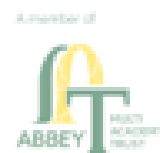
Healthy Holidays is our local name for the Department for Education's (DfE) Holiday Activity and Food Programme.

# St Chad's CofE Primary School **Newsletter**



St. Chad's Parent Calendar 2025 - 2026\_version 16

**NOTE: Changes since previously issued shown in red.**



## AUTUMN TERM

### September 2025

Tuesday 2 <sup>nd</sup> September	8.45am school opens to Nursery, Year 1 to Year 6
Tuesday 2 <sup>nd</sup> September	3.15pm Year 1 Welcome Meeting
Wednesday 3 <sup>rd</sup> September	Phased start for new Reception pupils
Thursday 4 <sup>th</sup> September	3.15pm Year 2 Welcome Meeting
Friday 5 <sup>th</sup> September	3.15pm Year 4 Welcome Meeting
Monday 8 <sup>th</sup> September	3.15pm Year 5 Welcome Meeting
Tuesday 9 <sup>th</sup> September	Year 4 swimming starts (pm)
Tuesday 9 <sup>th</sup> September	3.15pm Year 3 Welcome Meeting
Tuesday 9 <sup>th</sup> September	FOSC Meeting No1 - approx. 7pm in the school hall
Wednesday 10 <sup>th</sup> September	Year 6 Trip (The Royal Armouries)
Wednesday 10 <sup>th</sup> September	8.45am all Reception children start full time
Thursday 11 <sup>th</sup> September	9 - 10am Coffee Morning New Reception Parents
Friday 12 <sup>th</sup> September	9 - 10am Coffee Morning New Reception Parents
Friday 12 <sup>th</sup> September	No Family Worship
Monday 15 <sup>th</sup> September	3.15pm Reception Welcome Meeting
Tuesday 16 <sup>th</sup> September	Praying Parents Meeting 9-10am
Thursday 18 <sup>th</sup> September	Nursing Team (school immunisations) in school
Monday 22 <sup>nd</sup> September	Year 6 Robin Wood Trip
Tuesday 23 <sup>rd</sup> September	Year 6 Robin Wood Trip
Wednesday 24 <sup>th</sup> September	Year 6 Robin Wood Trip
Thursday 25 <sup>th</sup> September	9.15am - 10.45am New Reception 2026 entry and Nursery Open Event
Friday 26 <sup>th</sup> September	Parent Consultation - Booking goes live at 6.30pm
Tuesday 30 <sup>th</sup> September	Fire Brigade Talk to Year 5/Year 6 (provisional)

### October 2025

Friday 3 <sup>rd</sup> October	FOSC 'Wine Night'
Wednesday 8 <sup>th</sup> October	Year 2/Year 3 City of Leeds Diving Club Session
Wednesday 8 <sup>th</sup> October	Rev Hannah meeting year 1 links to RE Unit
Monday 13 <sup>th</sup> October	Year 1 only Parents Consultation Event 1 3.30 - 6.30pm
Tuesday 14 <sup>th</sup> October	Nursery, Reception, Year 2 - Year 6 Parent Consultation Event 1 3.30 - 6.30pm



# St Chad's CofE Primary School **Newsletter**



St. Chad's Parent Calendar 2025 - 2026\_version 16

**NOTE: Changes since previously issued shown in red.**



October 2025	
Wednesday 15 <sup>th</sup> October	Praying Parents Meeting 9-10am
Wednesday 15 <sup>th</sup> October	1.45pm Harvest Service @St . Chad's Church
Thursday 16 <sup>th</sup> October	3.30pm - 5.30pm Parent Consultations Nursery to Year 6 (Event 2)
Friday 17 <sup>th</sup> October	pm Year 3 Stone Age Den Building (provisional)
Wednesday 22 <sup>nd</sup> October	9.15 - 10.45am New Reception 2026 entry and Nursery Open Event
Thursday 23 <sup>rd</sup> October	Whole School Individual Photos
Friday 24 <sup>th</sup> October	3.15pm school closes for half term
November 2025	
Monday 3 <sup>rd</sup> November	Training Day - School Closed
Tuesday 4 <sup>th</sup> November	8.45am school opens for nursery to year 6
Wednesday 5 <sup>th</sup> November	Year 1 Trip to St. Chad's Church
Thursday 6 <sup>th</sup> November	FOSC Coffee Morning after <u>drop</u> off
Thursday 6 <sup>th</sup> November	Year 5 Trip to St. Chad's Church
Friday 7 <sup>th</sup> November	FOSC Coffee and Catch Up from 2.30pm
Saturday 8 <sup>th</sup> November	Cardinal Heenan Cross Country Event - First Race 10am
Friday 14 <sup>th</sup> November	FOSC Family Beetle Drive <del>{may need to change - TBC}</del>
Friday 14 <sup>th</sup> November	Children In Need
Wednesday 19 <sup>th</sup> November	1.30 -2.45pm New Reception 2026 entry and Nursery Open Event
Friday 21 <sup>st</sup> November	Year2 @Great Fire of London immersive experience (Temple Newsam)
Saturday 29 <sup>th</sup> November	Woodhouse Grove Cross Country Event - First Race 9.30am
December 2025	
Thursday 4 <sup>th</sup> December	10am Nursery Nativity
Friday 5 <sup>th</sup> December	No Family Worship
Tuesday 9 <sup>th</sup> December	Year 5 Trip to Temple Newsam
Tuesday 9 <sup>th</sup> December	Year 4 Rewind to Christmas - details to follow
Wednesday 10 <sup>th</sup> December	am Year 6 Trip to RERF
Wednesday 10 <sup>th</sup> December	12pm Choir @ St Chad's Lunch Club

# St Chad's CofE Primary School **Newsletter**



St. Chad's Parent Calendar 2025 - 2026 \_version 16

**NOTE: Changes since previously issued shown in red.**



December 2025 (continued)	
Thursday 11 <sup>th</sup> December	National Christmas Jumper Day
Thursday 11 <sup>th</sup> December	10am Reception and KS1 Nativity
Thursday 11 <sup>th</sup> December	Year 3 Trip to Leeds Library (The Elves and the Storyteller) - provisional
Thursday 11 <sup>th</sup> December	2.15pm Reception and KS1 Nativity
Friday 12 <sup>th</sup> December	FOSC Winter Warmer
Monday 15 <sup>th</sup> December	Year 3 carol singing at Alexandra Court Care Home (am)
Monday 15 <sup>th</sup> December	Year 2 carol singing at Alexandra Court Care Home (pm)
Monday 15 <sup>th</sup> December	Choir singing at Manor Care Home (Horsforth)
Tuesday 16 <sup>th</sup> December	No Year 4 Swimming
Tuesday 16 <sup>th</sup> December	Praying Parents Meeting 9-10am
Tuesday 16 <sup>th</sup> December	Christmas Elf Run (Simon on The Streets)
Wednesday 17 <sup>th</sup> December	9.30am KS2 Carol Concert/Christmas Celebration
Wednesday 17 <sup>th</sup> December	2.15pm KS2 Carol Concert/Christmas Celebration - Note time change
Wednesday 17 <sup>th</sup> December	Christmas Dinner Day
Thursday 18 <sup>th</sup> December	<del>Year 4 carol singing at Alexandra Court Care Home (am)</del>
Thursday 18 <sup>th</sup> December	1.45pm Christmas Service at St. Chad's Church
Thursday 18 <sup>th</sup> December	Choir Carol Singing in the Playground
Friday 19 <sup>th</sup> December	No Family Worship
Friday 19 <sup>th</sup> December	FOSC Christmas Celebration (in school) including Santas Grotto
Friday 19 <sup>th</sup> December	3.15pm School closes for Christmas Holidays
Sunday 21 <sup>st</sup> December	Choir to sing at Carols by Candlelight at St Chads Church 6.30pm
SPRING TERM	
January 2026	
Monday 5 <sup>th</sup> January	8.45am School Re-Opens Nursery to Year 6
Monday 5 <sup>th</sup> January	Leeds United Healthy Schools working with year 1 and year 4
Tuesday 6 <sup>th</sup> January	1.30 -2.45pm New Reception 2026 and Nursery Open Event
Tuesday 6 <sup>th</sup> January	No Year 4 Swimming
w/c Monday 12 <sup>th</sup> January	Year 1 - Year 6 Assessment Week 1



# St Chad's CofE Primary School Newsletter



St. Chad's Parent Calendar 2025 - 2026\_version 16

NOTE: Changes since previously issued shown in red.



January 2026	
Monday 12 <sup>th</sup> January	Leeds United Healthy Schools working with year 1 and year 4
Tuesday 13 <sup>th</sup> January	Year 4 Swimming restarts
Wednesday 14 <sup>th</sup> January	Praying Parents Meeting 9-10am
Saturday 17 <sup>th</sup> January	Prince Henry's Cross Country Event – First Race 10am
Monday 19 <sup>th</sup> January	Leeds United Healthy Schools working with year 1 and year 4
w/c 19 <sup>th</sup> January	Year 1 – Year 6 Assessment Week 2
Monday 26 <sup>th</sup> January	Leeds United Healthy Schools working with year 1 and year 4
Friday 30 <sup>th</sup> January	Training Day (school closed to pupils)
February 2026	
Monday 2 <sup>nd</sup> February	Leeds United Healthy Schools working with year 1 and year 4
Friday 6 <sup>th</sup> February	NCMP and Vision Screening- Reception and Year 6 Children
<b>Friday 6<sup>th</sup> February</b>	<del>FOSC Curry and Quiz Night</del> <b>FOSC Family Bingo Night</b>
Mon 9 <sup>th</sup> – Weds 11 <sup>th</sup> February	Year 5 <del>Bikeability</del>
Thursday 12 <sup>th</sup> February	Praying Parents Meeting 9-10am
Friday 13 <sup>th</sup> February	3.15pm School Closes for Half Term
Wednesday 18 <sup>th</sup> February	Lent Starts
Monday 23 <sup>rd</sup> February	8.45m School Re-Opens
w/c 23 <sup>rd</sup> February	Whole school Lent Appeal begins
Saturday 28 <sup>th</sup> February	Middleton Park Cross Country Event – First Race 10am
March 2026	
Thursday 5 <sup>th</sup> March	World Book Day
Thursday 12 <sup>th</sup> March	Year 1 Trip to Skelton Grange
<b>Friday 13<sup>th</sup> March</b>	<del>FOSC Family Bingo Event</del> <b>FOSC Quiz Night</b>
Tuesday 17 <sup>th</sup> March	Praying Parents Meeting 9-10am
Wednesday 18 <sup>th</sup> March	Year 3 Trip to Royal Armouries
Thursday 19 <sup>th</sup> March	Year 1 – Year 6 Reports Issued
Thursday 26 <sup>th</sup> March	3.30 – 6.30pm Parents Evening Nursery to Year 6 (Event 1)
Wednesday 1 <sup>st</sup> April	3.30 – 5.30pm Parents Evening Nursery to Year 6 (Event 2)

# St Chad's CofE Primary School **Newsletter**



St. Chad's Parent Calendar 2025 - 2026 \_version 16

**NOTE: Changes since previously issued shown in red.**



<b>SUMMER TERM</b>	
<b>April 2026</b>	
Wednesday 1 <sup>st</sup> April	Easter Service @St. Chad's Church
Thursday 2 <sup>nd</sup> April	3.15pm School Closes for Easter Holidays
Monday 20 <sup>th</sup> April	8.45am School Opens
Wednesday 22 <sup>nd</sup> April	Praying Parents Meeting 9-10am
<b>May 2026</b>	
Monday 4 <sup>th</sup> May	Bank Holiday Monday
Monday 11 <sup>th</sup> May	KS2 SATS Tests
Tuesday 12 <sup>th</sup> May	KS2 SATS Tests
Wednesday 13 <sup>th</sup> May	KS2 SATS Test
Thursday 14 <sup>th</sup> May	KS2 SATS Tests
Friday 15 <sup>th</sup> May	FOSC Spring Fling
Friday 15 <sup>th</sup> May	Year 6 Pyjama Day (or similar!)
Thursday 21 <sup>st</sup> May	Praying Parents Meeting 9-10am
Friday 22 <sup>nd</sup> May	3.15pm School Closes for Half Term Holidays
<b>June 2026</b>	
Monday 1 <sup>st</sup> June	8.45am School Opens
Monday 1 <sup>st</sup> June	Multiplication Times Tables Check opens
Monday 8 <sup>th</sup> June	Year 1 Phonics Screening Check opens
w/c 8 <sup>th</sup> June	Year 1 - Year 6 Assessment Week 1
w/c 15 <sup>th</sup> June	Year 1 - Year 6 Assessment Week 2
Tuesday 16 <sup>th</sup> June	Praying Parents Meeting 9-10am
Wednesday 17 <sup>th</sup> June	Year 6 Trip to Saltburn
Thursday 18 <sup>th</sup> June	Whole School Culture Day (provisional pending Abbey Grange)
Friday 19 <sup>th</sup> June	Whole School Culture Day (provisional pending Abbey Grange)
Saturday 20 <sup>th</sup> June	FOSC Summer Fair (provisional) - option 1
Monday 22 <sup>nd</sup> June	Year 4 Nell Bank Residential
Tuesday 23 <sup>rd</sup> June	Year 4 Nell Bank Residential
Wednesday 24 <sup>th</sup> June	Year 4 Nell Bank Residential
Thursday 25 <sup>th</sup> June	Nursery Sports Day (afternoon)
Friday 26 <sup>th</sup> June	Year 1 Trip to Armley Mills (provisional)



# St Chad's CofE Primary School **Newsletter**



St. Chad's Parent Calendar 2025 - 2026\_version 16

**NOTE: Changes since previously issued shown in red.**



## June 2026 (continued)

Saturday 27<sup>th</sup> June

FOSC Summer Fair (provisional) – option 2

## July 2026

Wednesday 1<sup>st</sup> July

Lawnswood Transition Day (year 6 pupils if attending in September)

Wednesday 1<sup>st</sup> July

pm Whole School transition afternoon

Thursday 2<sup>nd</sup> July

Nursery Sports Day (afternoon – reserve date)

Thursday 2<sup>nd</sup> July

am Whole School transition morning

Thursday 2<sup>nd</sup> July

Abbey Grange Transition Day (year 6 pupils if attending in September)

Friday 3<sup>rd</sup> July

Reception to Year 6 Sports Day (afternoon)

Wednesday 8<sup>th</sup> July

5pm Year 6 Production

Thursday 9<sup>th</sup> July

10 – 2pm Year 6 Meanwood Park

Monday 13<sup>th</sup> July

School Reports issued

Friday 10<sup>th</sup> July

Reception to Year 6 Sports Day (afternoon – reserve date)

Tuesday 14<sup>th</sup> July

Nursery End of Year Celebration (pm)

Wednesday 15<sup>th</sup> July

Reception End of Year Celebration (pm)

Wednesday 15<sup>th</sup> July

Praying Parents Meeting 9-10am

Thursday 16<sup>th</sup> July

1.45pm Leavers Service @St. Chad's Church

Friday 17<sup>th</sup> July

2.15pm Year 6 Leavers Assembly

Friday 17<sup>th</sup> July

School closes

Monday 20<sup>th</sup> July

Training Day (school closed to pupils)

Tuesday 21<sup>st</sup> July

Training Day (school closed to pupils)