



Where  
**GREAT**  
futures begin

INDEPENDENT EDUCATION  
NURSERY- YEAR 2

**GREAT**  
**BALLARD**  
**PRE-PREP**



PREP

SENIOR

## Contents

A Warm Welcome	3
Eyes on the Future	4
School Structure	5
Explorers: Nursery & Reception	6
Discoverers: Years 1 & 2	8
Next Steps	10
Explore our World	12-15

# The Adventure Starts Here...

# A warm welcome

“Kindness and community are at the heart of everything we do. We believe it's what makes us great.”

So many people who visit our Pre-Prep know instinctively that it is a perfect place to begin. Set here in the heart of our beautiful school, with its warm and welcoming staff and stunning woods and gardens, the step can feel a small one, a safe one and a happy one. And while we know that little step will lead to great things, it's the journey itself that matters most.

GB is a school that cares; a school built completely around its students, a school with a heart. We take education beyond the classroom, making the most of our wonderful location and prioritising creativity, character and wellbeing. You will know already that at Great Ballard we believe the best lessons engage the Head, Hand, Heart and Health of every student. Our commitment to this holistic principle is written in bold on the very first page of every child's story.

But above all else, GB is a special community and we hope from your very first contact with us, you'll feel our inclusivity and warmth. In our school, everyone matters and no one is invisible, and we look forward to welcoming you into our family.

Matt King, Head

“  
**And suddenly  
you know... it's  
time to start  
something new  
and trust the  
magic of  
beginnings.**

”



# Head in the stars, Hands in the soil...



## Eyes on the future

At Great Ballard, we understand the importance of being little, and believe that the earliest years of education should be filled with wonder, discovery and joy. Every day at Pre-Prep is an adventure - indoors and out - where creativity is celebrated, deep thinking is made visible and play is respected as the important work of busy minds. Tucked into our quiet corner of the South Downs and nestled amongst the magic of nature, young children are adventurers, gardeners, designers, foragers, engineers, artists, scientists, writers, readers and dreamers.



Our rich, future-focused curriculum is brought to life by expert teachers and exceptional whole-school facilities. With small class sizes and inspiring, hands-on teaching, each child receives the care, support, and challenge they need to flourish - whether they're around the campfire, in the design studio or deep in imaginative play. From Nursery onwards, children are encouraged to ask questions, explore ideas and grow in confidence through hands-on, collaborative learning.



From building bridges in a STEAM challenge to investigating the seasons in our Treetops classroom or working together on a project sparked by their own curiosity, our pupils are active participants in their learning journey. Our strong sense of community ensures a space in which children feel safe to take risks and try new things, developing skills for lifelong resilience. It also nurtures kind hearts, with every day rooted in empathy and respect for one another and the world around us. We'd love to welcome you to come and see us in action.

*Katie Morgan, Head of Pre-Prep*

# School structure

## Our Learning Environment

Our Nursery and Pre-Prep at Great Ballard enjoy their own enclosed playground and gardens in the heart of the school. Every classroom opens out onto this bespoke area, providing endless opportunities for engaging play and outdoor learning. Our youngest pupils are still very much part of the whole school, enjoying access to our idyllic rural grounds and woodlands, including our magical Forest School area, cookery room, performance hall, science labs, art room and sports pitches. They also use the main school dining room every day to enjoy a hot, home-cooked meal, prepared by our fantastic in-house catering team.

provide another layer of pastoral care and experience, to support the teaching team and our families.

## OUR JUNIOR SCHOOL

Year 6	PREPARE
Year 5	
Year 4	
Year 3	DISCOVER
Year 2	
Year 1	EXPLORE
Reception	
Upper Nursery	
Lower Nursery	

## The Great Ballard Family

Our small class sizes allow us to take time to get to know every family and every child and to map individual progress. We welcome parents, grandparents and friends to school events and our team are always available to discuss your child's learning journey. We firmly believe that happiness is the foundation for learning and we are always keen to work in partnership with parents to ensure the best outcomes. As well as your child's key worker or class teacher, we are lucky enough to have a Head of Early Years and a Head of Pre-Prep to

## Inspiring Learning

Our imaginative curriculum is built around a strong core of literacy and numeracy, with Heads of Department from the Senior School working collaboratively with the Pre-Prep and Nursery team on the planning and delivery of core subjects. Learning is further enhanced from Reception onwards by specialist teaching in music, P.E., languages and outdoor education.

“High levels of wellbeing and engagement create a high level of attainment and enjoyment. In other words, happy children are learning children!”



# Explorers

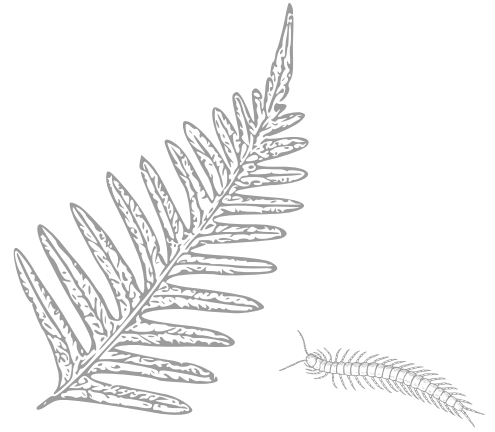


“  
The facts may change, but  
that enthusiasm for  
exploring the world will  
remain with them the rest  
of their lives.



- Seymour Simon

# Nursery & Reception



## The Magic of Childhood

Nursery and Reception children enjoy their own bespoke learning spaces within the Early Years Hub, which open out onto the beautiful playground. Our youngest students also take every opportunity to get out and explore our idyllic grounds. From planting in the school gardens to tracking dinosaurs in the woods, we know children learn best when they have the freedom and space to investigate and discover the world around them. Curiosity is a gift that deserves exploration.

## Little People, Big Futures

Our Early Years classes are proudly small but enjoy the benefits of being part of a bigger school. Children appreciate the grounds and facilities, but they love their role models even more. They look up to the senior students who read and play with them and are inspired by the teachers whose experiments, languages and instruments transport them towards wider worlds and more exciting futures.

GB children don't just play, they puzzle, propose, invent and solve.

## Grown-up Adventures

From the earliest age, children learn through projects which

encourage them to pursue their curiosity and to explore. They find inspiration in the world around them, but also in stories, songs and technology. Hands-on learning grows confidence and self-reliance, giving our pupils a head start for the move into Reception.

In the Reception class, the daily focus on literacy and numeracy increases, building the strongest foundations for future learning. The project-based approach continues, ensuring the value of collaboration, creativity and discussion is never underestimated. An emphasis on the STEAM framework delivers hands-on experiences, which strengthen and scaffold educational development.

## Beyond the School Day

We offer flexible, wraparound care, and accommodate full or half-day sessions in nursery, with or without lunch. We aim to build our offering around you and your child and not the other way round.

From Reception onwards, pupils can take advantage of after school clubs, which run from 3.30-4.30pm and are led by staff from all areas of the school. These clubs change every term and range from Rugby Tots and multi-activities to Greek myths and Weird Science in the school labs.

Our Explorers grow their confidence by partaking in many annual events, including performances, enterprise fairs, charity days and Sports Day. Families are always welcome to attend and we regularly invite parents and guardians into school for coffee mornings and events such as our Great Little Talks. Just like your children, we want you to feel part of the wider family, forming friendships that will last throughout your time at GB and beyond.

## Part of the Family

Our experienced Early Years staff will work in partnership with you to provide the best start, with teachers always available to talk about your child and their progress. We share magic moments and learning goals through an online platform called Tapestry, helping you to feel involved in every step of your child's journey.

At Great Ballard we want to enjoy out every ounce of the magic of childhood, while ensuring children are entirely ready for the big steps that lie beyond...



# Discoverers



# Years 1 & 2



## Bright Sparks

In Years 1 and 2, teachers continue to build on our STEAM curriculum, strengthening core skills and nurturing confidence through real-world application, ensuring a relevant and rounded education in line with the school's 4H approach. There are even more opportunities to get off-site, to learn outdoors and to broaden horizons.

The spotlight on daily literacy and numeracy gets brighter, and levels of challenge rise. Small class sizes allow freedom and diversity within learning and more differentiation. Children learn more about the Humanities, Sciences and technology and opportunities in the creative arts increase. Year 1 and 2 classrooms fizz with wonder and excitement, as groups of young Discoverers are encouraged to solve problems and develop creativity through well planned but open activities and projects. There is even more specialist teaching and more clubs providing breadth and stretch in music, modern foreign languages, PE, swimming, science and outdoor education.

Importantly, pupils take an active role in designing their curriculum, leading their own learning, pursuing passions and fostering greater independence and resilience.

## Making Strides

Our teachers are readily

available to discuss your child's progress. Parents and guardians receive more regular written reports and feedback and are invited to attend formal information evenings, explaining curriculum, providing support and highlighting attainment. As well as teacher assessments, we use regular cognitive ability testing to benchmark children's learning and ensure their educational pathway is tailored to stretch and support them. We recognise that attainment in the classroom is just one strand of education, which is why we also place such emphasis on wellbeing and social skills and give our pupils the opportunity to achieve in a range of areas.

## Community Matters

Families will continue to share their children's journey through sports days, outdoor learning days and music and drama performances. Students across the school are encouraged to take part in charity and enterprise events; to plan and run stalls, to design products, to advertise, to present and to perform. Through each new event they grow in confidence, recognising the difference they can make, both in the world and in their school, as determined agents for change. We also want parents to feel actively involved in life at GB, sharing their own experience with our students, attending Great Little Talks (on subjects like mental health and technology) and attending

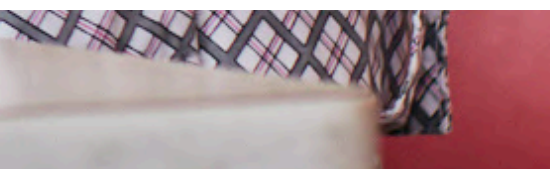
coffee mornings and get-togethers. And, as the next step approaches, there will be a rising focus on preparing parents and children for the small, but significant, step into Year 3. Children will already be used to the house system, assemblies and whole school events and will become more familiar with staff and students in older years as each term passes.

Pre-Prep is an inspiring start to your child's learning journey but it is also a launch pad to something even greater.

“  
The art of teaching is  
the art of assisting  
discovery.

”

- Mark Van Doren





# Next steps



## Would you like to find out more?

The best way to get a sense of what we are all about is to arrange a visit. Our dedicated Admissions Team would be very happy to arrange a personal tour or book you in to one of our regular Open Mornings. When you visit in person we highly recommend a pair of wellies so that you can explore our beautiful site, but we will make sure there's also time for a cup of tea and a chance to meet both staff and pupils!

## Taster Days

Prospective pupils are invited to taster sessions, the length and number of which will depend on your child's age and what will make them feel most comfortable. Children currently in Reception to Year 2 will be invited to join us for "New Friends" days, during which your child would be informally assessed whilst experiencing a normal day with their peer group.

As long as we have spaces available and both you and our staff feel this is the right school for your child, then we are able to welcome pupils at any time during the school year, even mid-term.

## What kind of families and children join the Senior School at Great Ballard?

There is no typical Great Ballard family or child. While some students join us from other independent schools, an equal amount are starting independent education for the first time. Our ambition is always to be inclusive and tailor our approach to meet our students' needs. We want them to be the very best versions of themselves and not pale imitations of someone else.

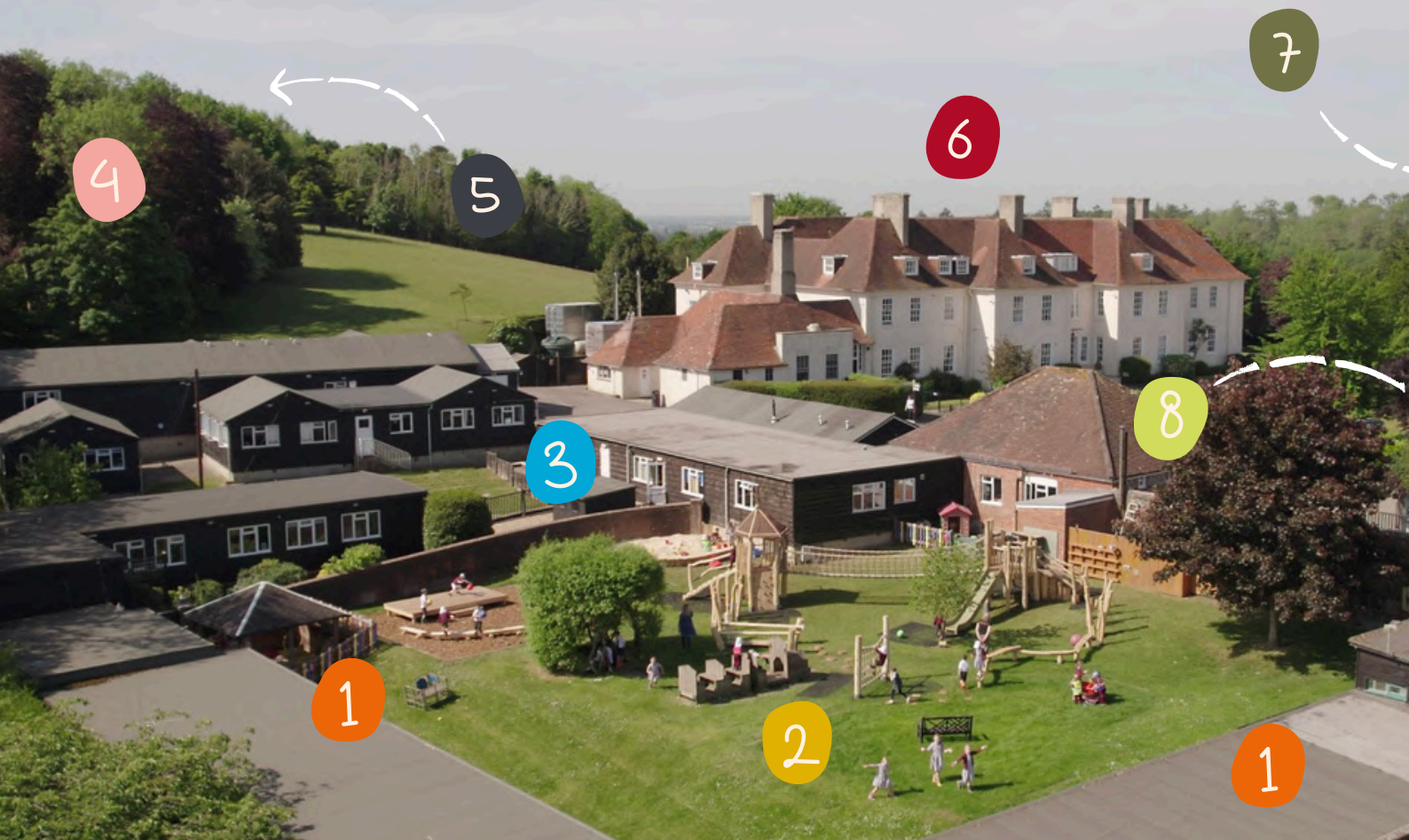
“  
**There is no typical Great Ballard family or child. Our ambition is to always be inclusive.**  
”

We would love to talk to you about our Pre-Prep. If you have any questions or would like to find out more, please contact us:

 [office@greatballard.co.uk](mailto:office@greatballard.co.uk)

 +44 (0)1243 814236

# Explore our world



1. Pre-Prep learning spaces open out onto a shared central garden and playground, with plenty of space for children to play, grow and learn together.
2. Fully re-designed in 2022, our adventure playground equipment sparks imaginations and encourages active play. It also features a performance zone and construction space.
3. Pre-Prep pupils enjoy the benefits of the whole-school facilities, including the Music Department, school hall, science labs and computer suite.
4. Hidden among the beautiful trees of our woodland you will find our magical Tree Tops classroom. Here children learn about nature, as well as crafts and practical skills as part of our Outdoor Education curriculum.





Entrance to the school swimming pool.



Robot building in the computer suite.



5. At the top of our campus are our huge sports fields with spectacular views across the Solent. Pre-Prep children benefit from specialist coaching across a range of sports in their weekly PE lessons.

6. Each day, pupils make their way to our main dining hall for delicious home-made lunches, including salad bar options and pudding too!

7. Hidden away in our lovely walled garden is the swimming pool. From Reception upwards, children attend weekly swimming lessons.

8. Another favourite amongst pupils is our vegetable patch and school garden where pupils of all ages grow their own produce. We are also lucky enough to have our own friendly chickens that everyone enjoys visiting.





1

Learning in our Reception classroom.



2

New in 2022, Pre-Prep's exciting adventure playground.



3

Making some noise in the music room.



4

Outdoor Education



5

Sports field



6

Dining room



8

Vegetable garden



2



Pre-Prep playground



Getting creative in the Art Centre.

Great Ballard Pre-Prep Nursery to Year 2



5

Pre-Prep pupils have full use of our sports facilities.

1



Pre-Prep classroom

3



Pre-Prep pupils have specialist lessons built into their curriculum.

# GREAT BALLARD



## PRE-PREP

### Find out more

We would love to talk to you about our Pre-Prep.

If you have any questions, would like to find out more,  
or to arrange a visit, please contact us:

**Email:**

[office@greatballard.co.uk](mailto:office@greatballard.co.uk)

**Call:**

01243 814236



Keen to see us in  
action? Check out  
our social media  
accounts for a sneak  
peek at all the fun!



EARTHAM, CHICHESTER, WEST SUSSEX

[www.greatballard.co.uk](http://www.greatballard.co.uk)

