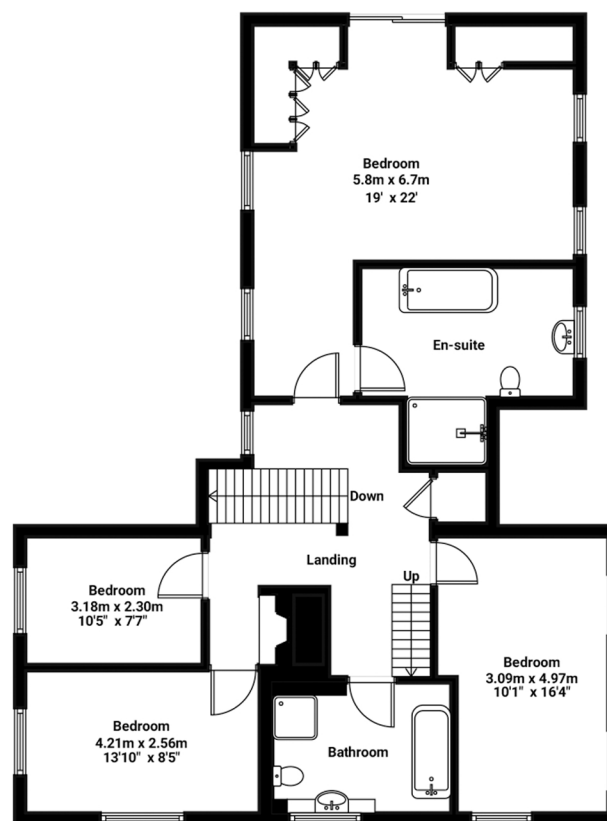
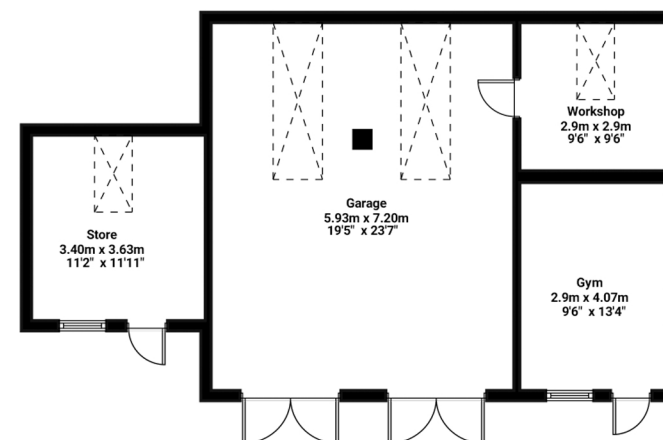


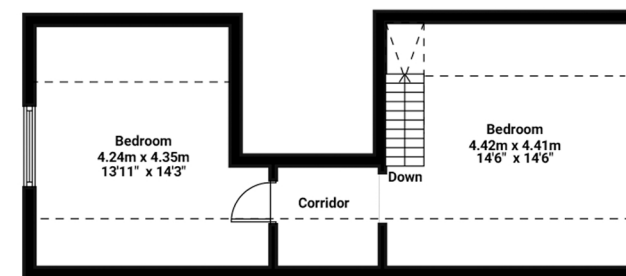
Ground Floor



First Floor



Outbuilding



Second Floor

## Goldingtons Manor, Colne Engaine

Internal area: 2700 sq.ft / 251 sq.mt

Excluded areas: Outbuilding 811 sq.ft / 75 sq.mt; Boiler Room 22 sq.ft / 2 sq.mt

Illustration for identification purposes only. Measurements are approximate and not to scale.



North