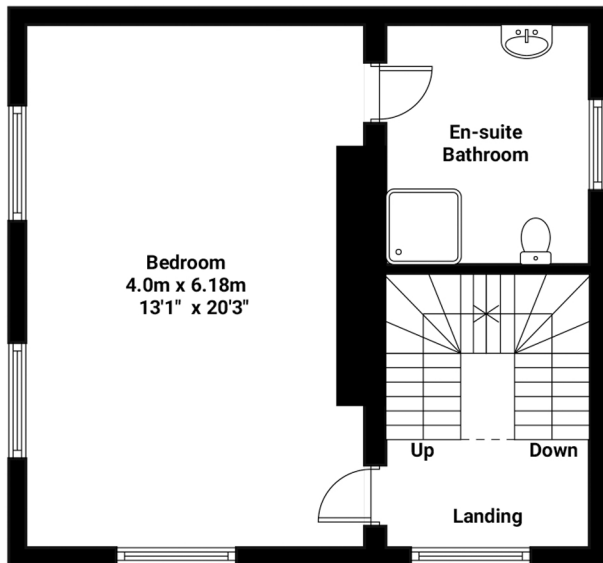
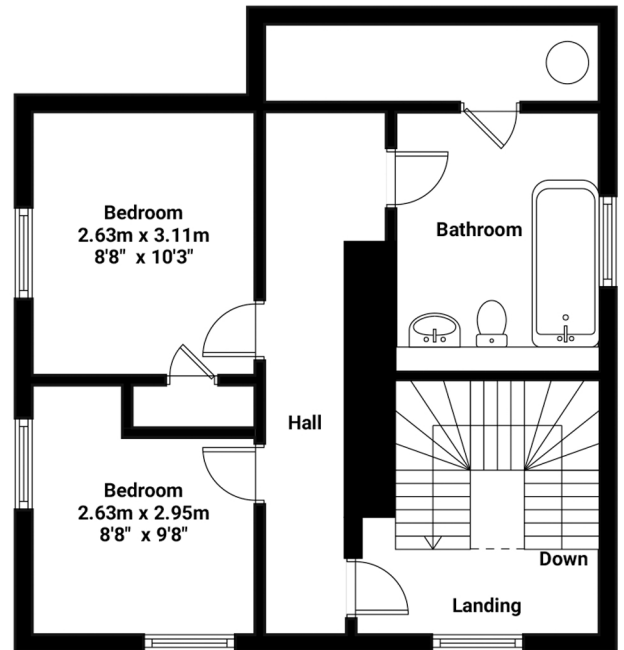


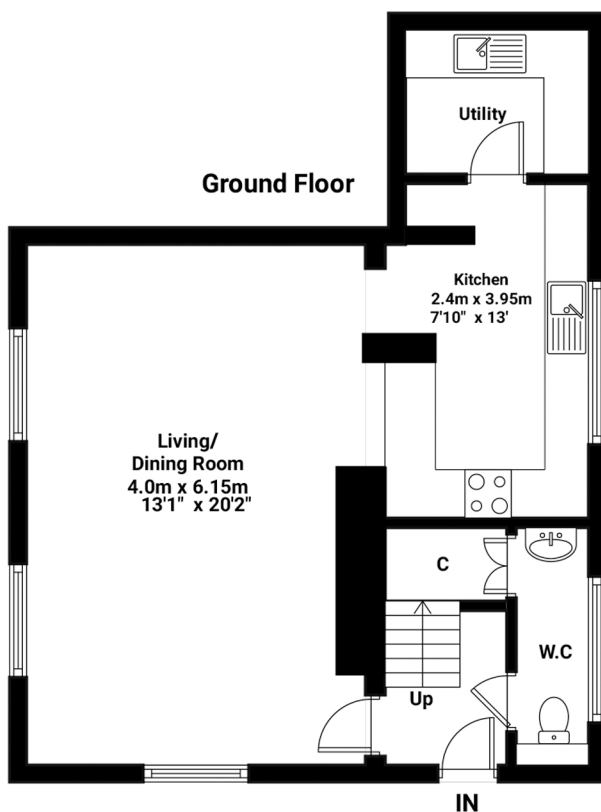
**First Floor**



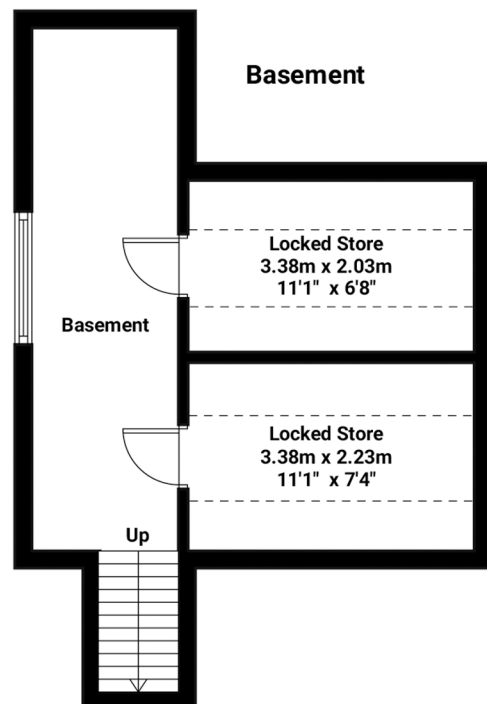
**Second Floor**



**Ground Floor**



**Basement**



**TOTAL APPROXIMATE FLOOR AREA :**  
 1644.1 sq ft (152.74 sq mt)  
 House : 1375.1 sq ft (127.67 sq mt)  
 Basement : 269 sq ft (25.07 sq mt)

**Wakes Hall Park, Wakes Colne**



**NP** NICHOLAS  
PERCIVAL

Illustration for identification purposes only. Measurements are approximate and not to scale.