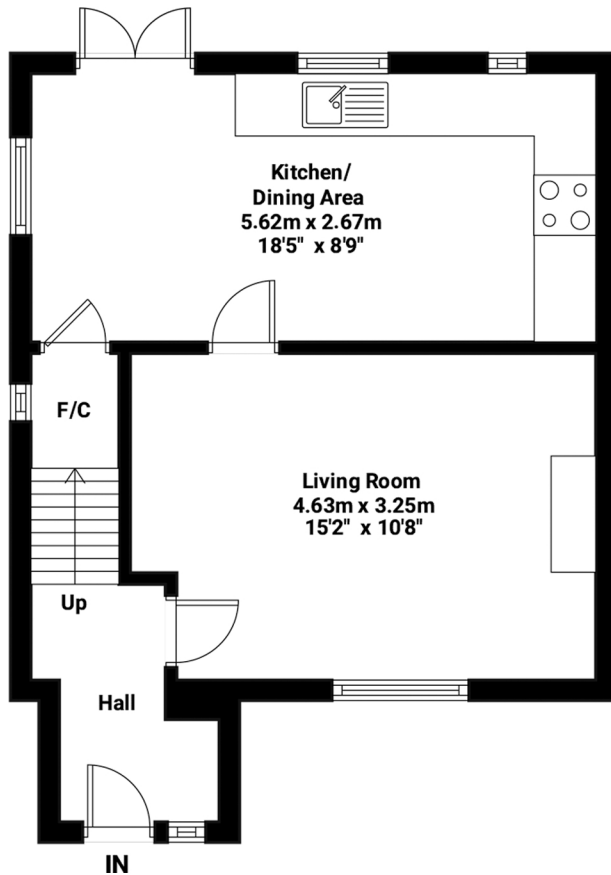
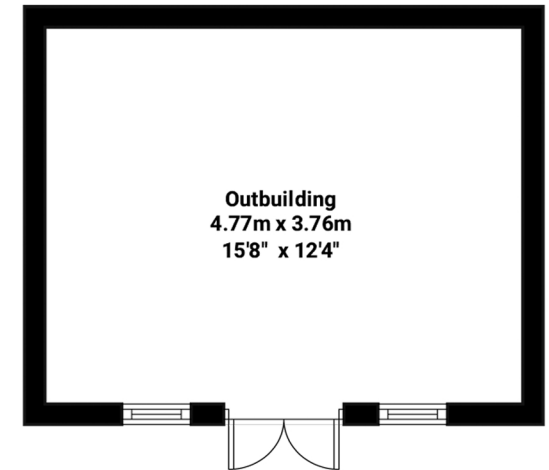
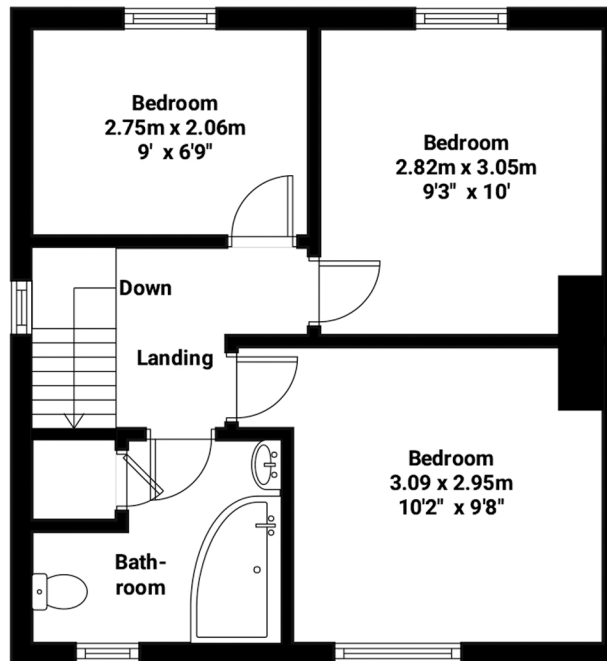


Ground



First



TOTAL APPROXIMATE FLOOR AREA :
 922 sq ft (85.66 sq mt)
 House : 728.9 sq ft (67.72 sq mt)
 Outbuilding : 193.1 sq ft (17.94 sq mt)

St Mary's Road, Kelvedon

Illustration for identification purposes only. Measurements are approximate and not to scale.

