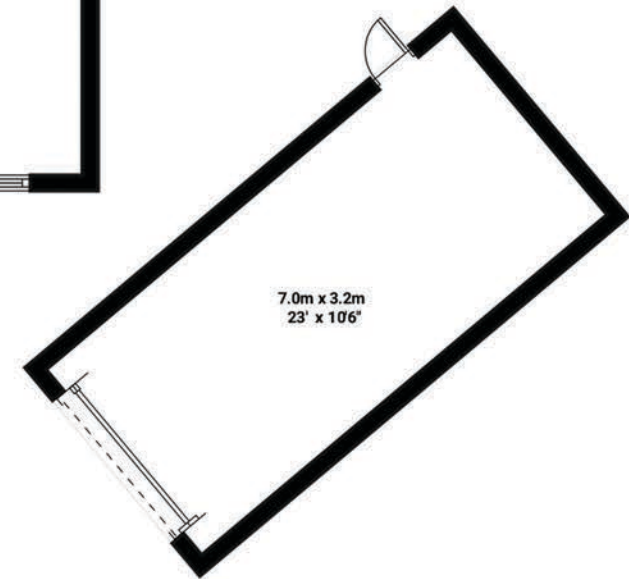


TOTAL APPROXIMATE FLOOR AREA :
2071.4 sq ft (192.44 sq mt)
House : 1830.3 sq ft (170.04 sq mt)
Garage : 241.1 sq ft (22.4 sq mt)



Bones Yard, Colne Engine

Illustration for identification purposes only. Measurements are approximate and not to scale.



NP NICHOLAS
PERCIVAL