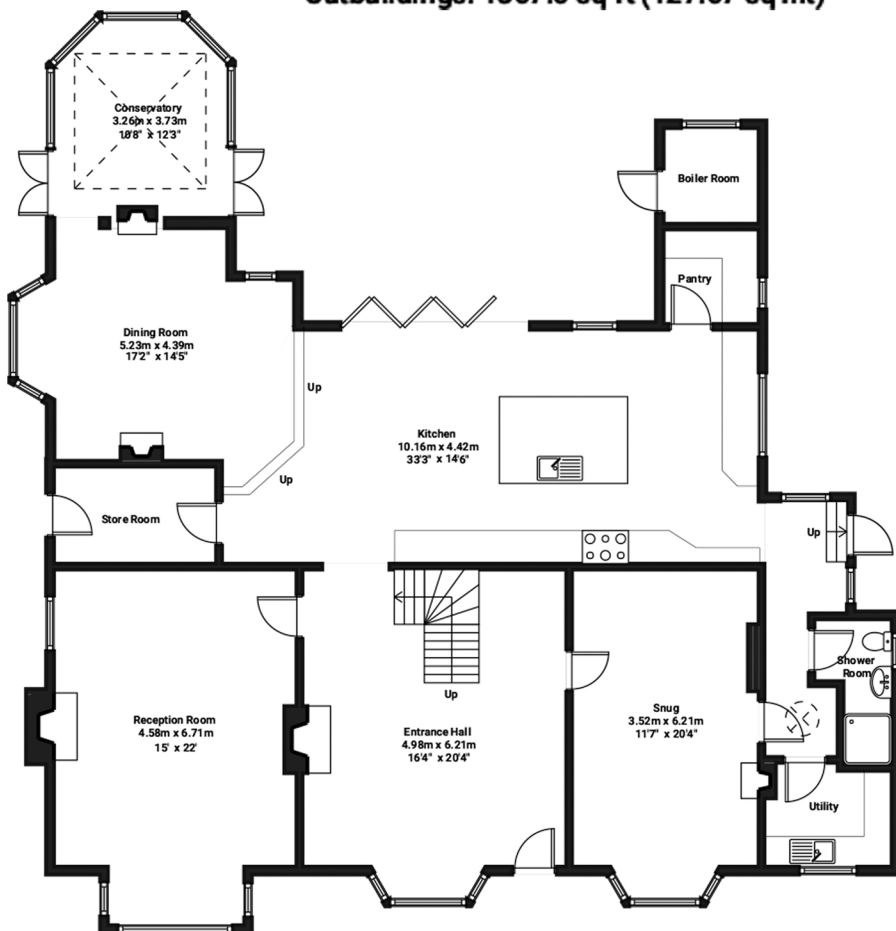
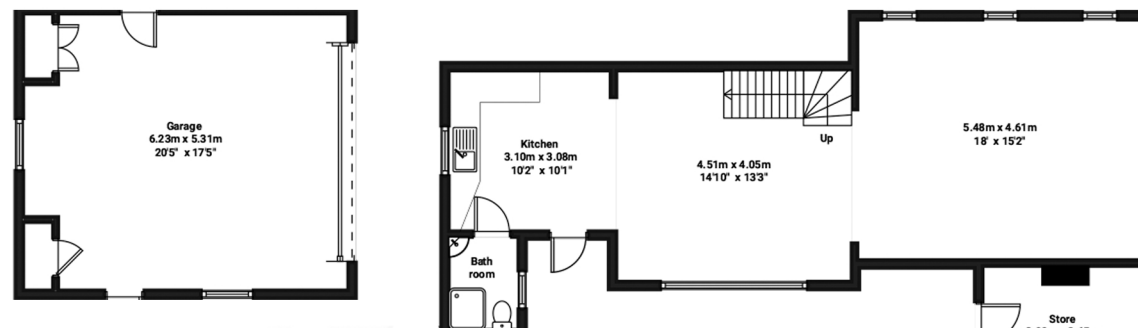


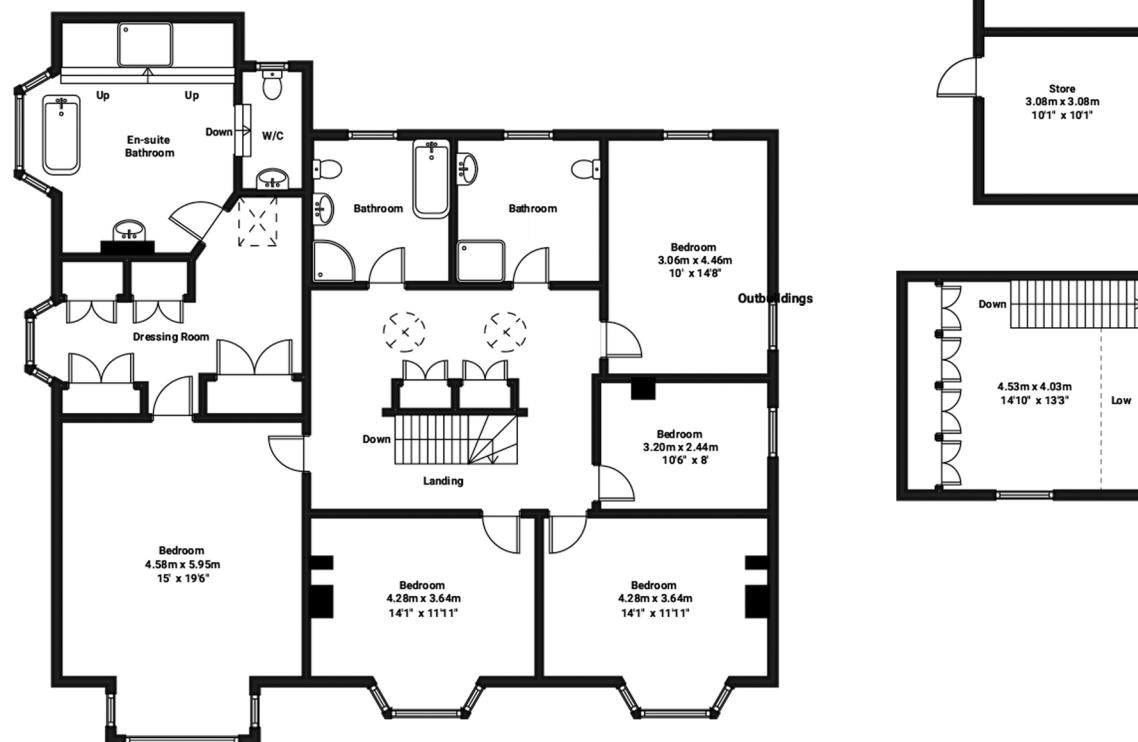
TOTAL APPROXIMATE FLOOR AREA:
4807.6 sq ft (446.64 sq mt)
House : 3433 sq ft (318.97 sq mt)
Outbuildings: 1367.5 sq ft (127.67 sq mt)



Ground Floor



Outbuildings



First Floor

Stockwell House, Little Burstead

Illustration for identification purposes only. Measurements are approximate and not to scale.

