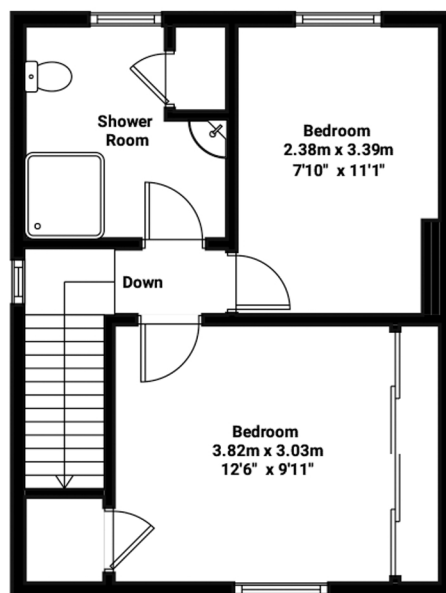
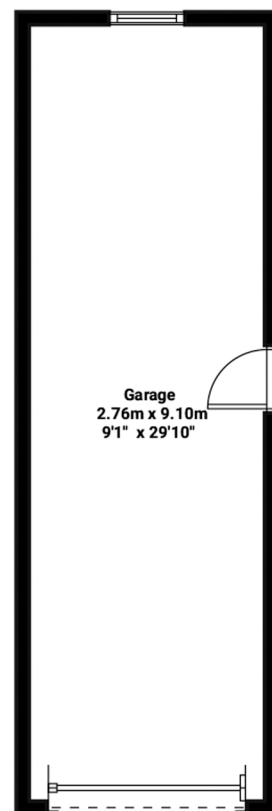


Ground Floor



First Floor



TOTAL APPROXIMATE FLOOR AREA:
1441 sq ft (133.87 sq mt)
House : 1170.7 sq ft (108.76 sq mt)
Garage: 270.3 sq ft (25.12 sq mt)

Coggeshall Road, Marks Tey



NP NICHOLAS PERCIVAL

Illustration for identification purposes only. Measurements are approximate and not to scale.