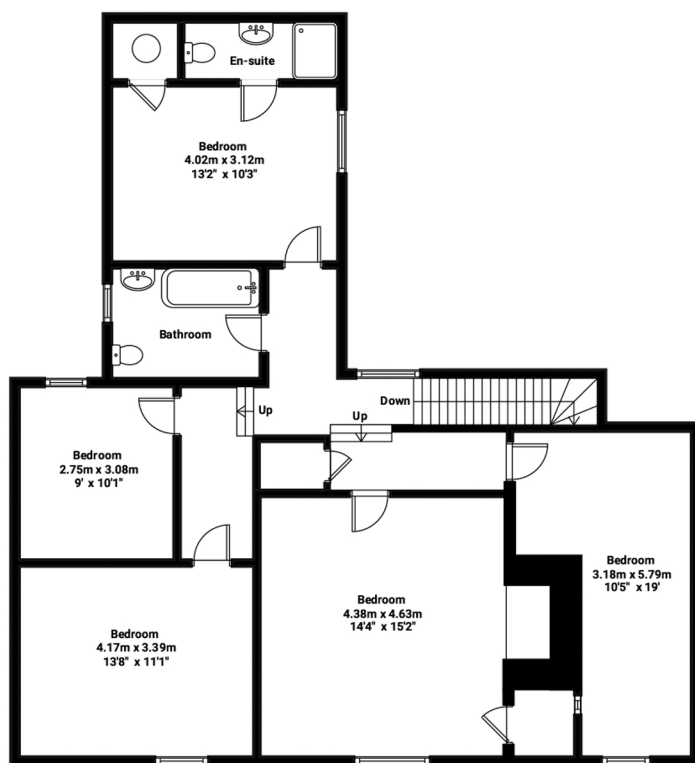


Ground Floor

TOTAL APPROXIMATE FLOOR AREA:
2783.6 sq mt (258.61 sq mt)
House : 2588.7 sq ft (240.5 sq mt)
Car Port : 195 sq ft (18.11 sq mt)



First Floor

Howchins, High Street, Earls Colne

Illustration for identification purposes only. Measurements are approximate and not to scale.



NP NICHOLAS
PERCIVAL