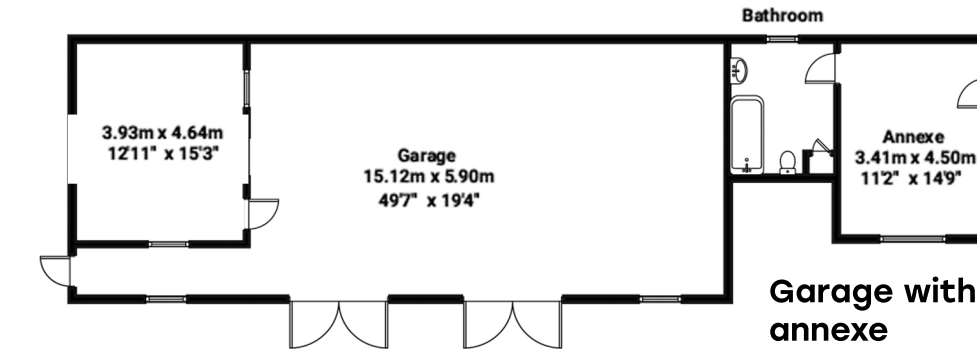
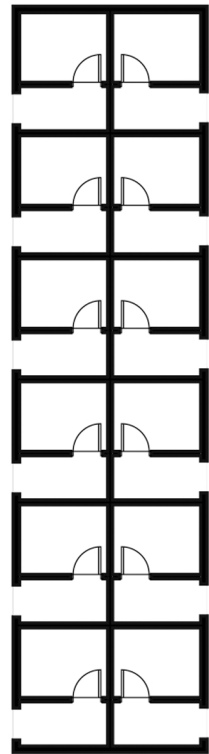


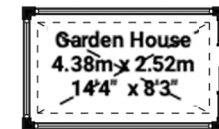
Garage

TOTAL APPROXIMATE FLOOR AREA:
 5667.9 sq ft (526.57 sq mt)
 Garage : 2432.9 sq ft (226.02 sq mt)
 Barn : 1282.1 sq ft (120.04 sq mt)
 Kennels : 1495.7 sq ft (138.95 sq mt)
 Annexe : 246.1 sq ft (22.86 sq mt)
 Summer House: 93.4 sq ft (8.67 sq mt)
 Garden House: 118.8 sq ft (11.03 sq mt)

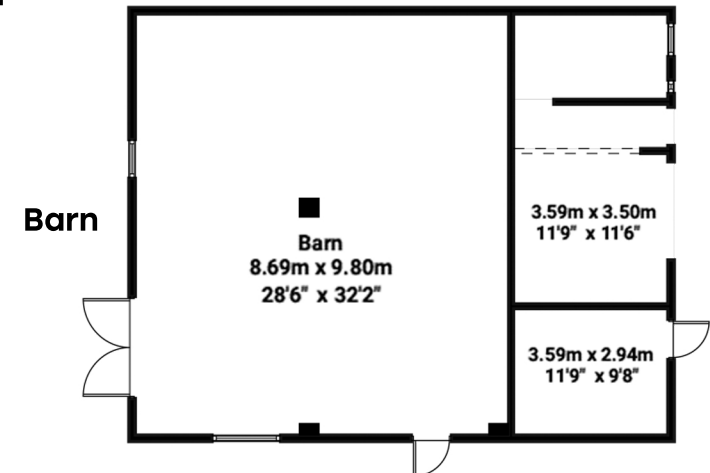
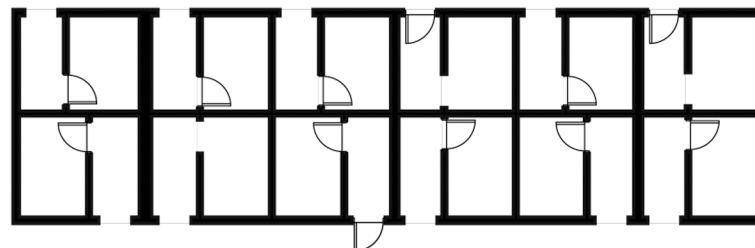


Garage with annexe

Summer House
 2.80m x 3.10m
 9'2" x 10'2"



Kennels



Barn

Outbuildings, Rowses Farm, Great Wigborough

Illustration for identification purposes only. Measurements are approximate and not to scale.



NP NICHOLAS
PERCIVAL