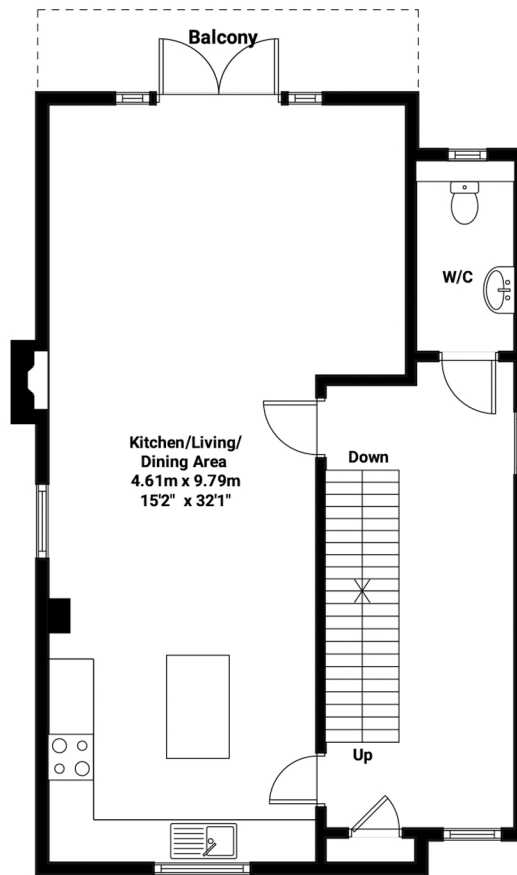
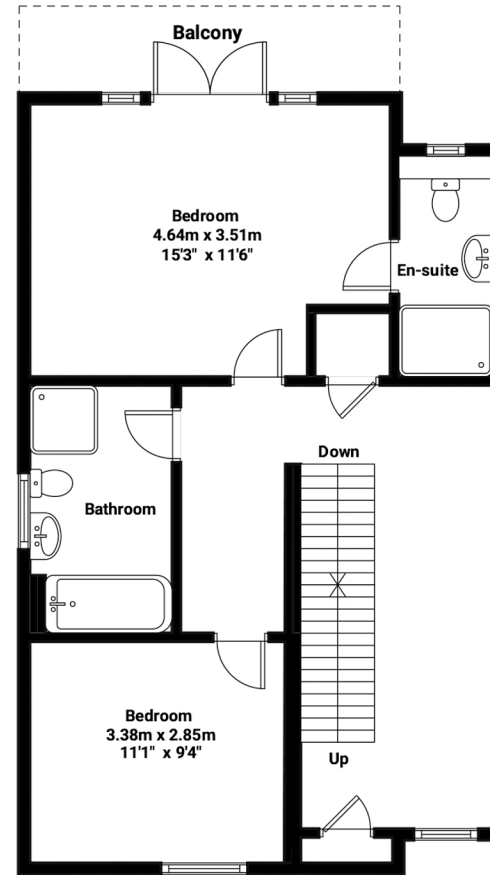


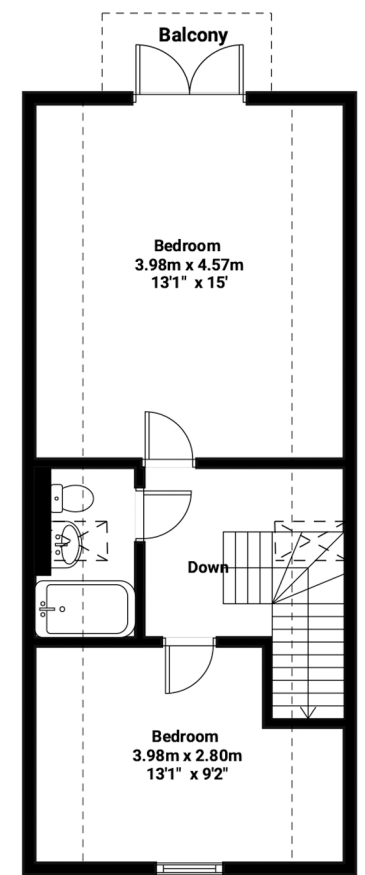
Ground Floor



First Floor



Second Floor



Third Floor

TOTAL APPROXIMATE FLOOR AREA:
2184.5 sq ft (202.95 sq mt)
House : 1949.8 sq ft (181.15 sq mt)
Garage: 234.7 sq ft (21.8 sq mt)

Willowbank, Melton, Woodbridge

Illustration for identification purposes only. Measurements are approximate and not to scale.



NP NICHOLAS
PERCIVAL