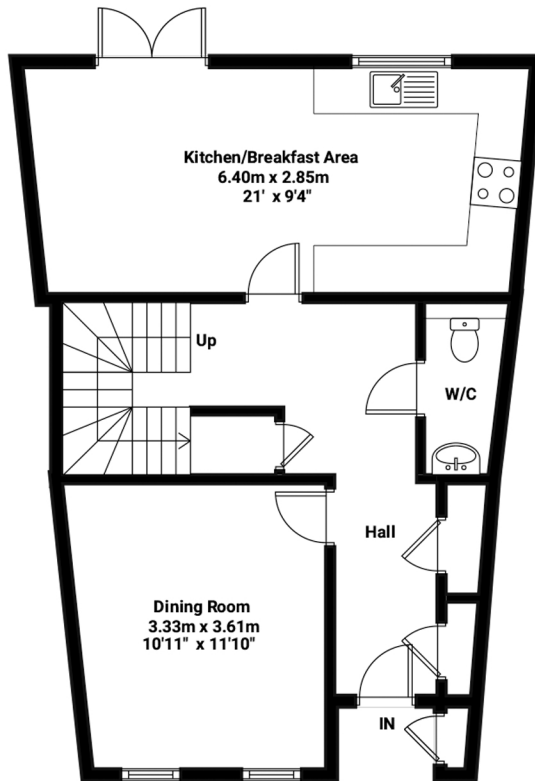
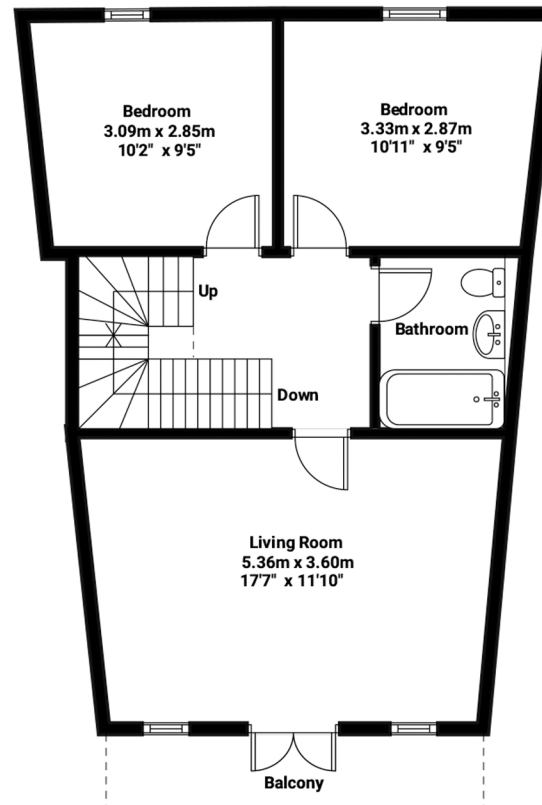


TOTAL APPROXIMATE FLOOR AREA:
1707.8 sq ft (158.66 sq mt)
House : 1503.4 sq ft (139.67 sq mt)
Outbuilding : 204.4 sq ft (18.99 sq mt)

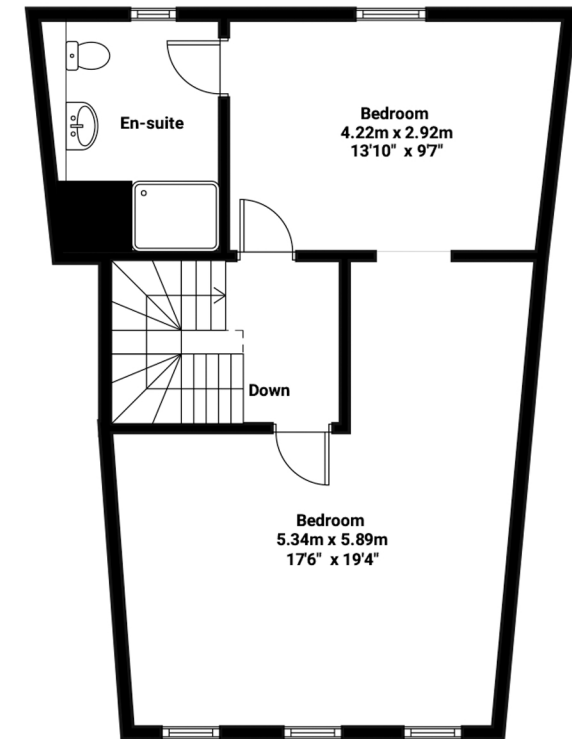
Ground Floor



First Floor



Second Floor



School Avenue, Basildon

Illustration for identification purposes only. Measurements are approximate and not to scale.



Luke Readings
 Partnered with
Happi