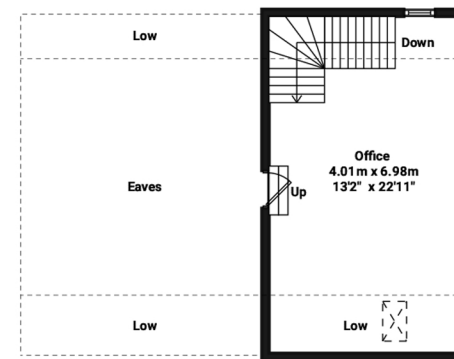


TOTAL APPROXIMATE FLOOR AREA:
1310.7 sq ft (121.76 sq mt)
Garage : 705.1 sq ft (65.5 sq mt)
Office : 432.5 sq ft (40.18 sq mt)
Workshop : 173.1 sq ft (16.08 sq mt)



**First Floor
over Garage**

Outbuildings, Peartree Farm, Coggeshall Road, Earls Colne

Illustration for identification purposes only. Measurements are approximate and not to scale.



NP NICHOLAS
PERCIVAL