

dado Lighting Plank Series

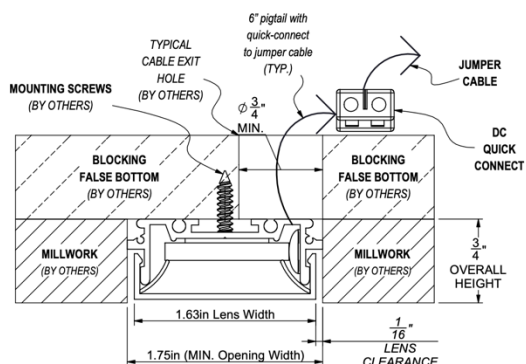
Luminous bars for use in wood plank and slat ceilings and walls

Evenly lit lens with no pixel or diode images

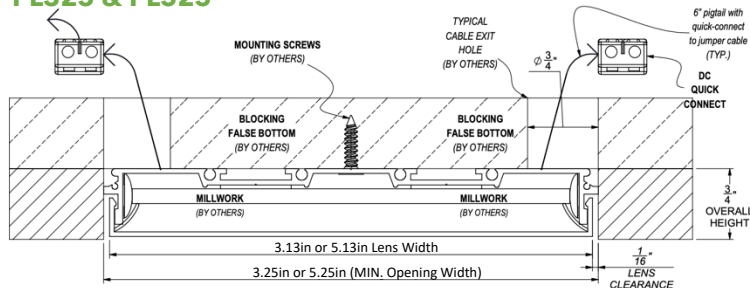
1.75", 3.25" and 5.25" coordinates with various plank and slat sizes and spacings



PL175



PL325 & PL525



CROSS SECTION

LED

Low wattage LEDs produce even distribution with no shadows or hot spots. Blending and overlapping optics of LED keep color uniform. LED board is fully encapsulated IP65 rated.

Optics

Light guide diffuses multiple LED sources. Standard units ship with 10ft (3.05m) class 2 jumper cable with DC quick connect at panel. See options for 35ft plenum rated cable. Snap in high transmission Acrylic lens provides a matte white finish for a dimensionless appearance.

Ordering

Series	PL175	<input type="checkbox"/>	Plank 1.75" width
	PL325	<input type="checkbox"/>	Plank 3.25" width
	PL525	<input type="checkbox"/>	Plank 5.25" width (avail. Fall 2022)
Lamping	3RE	<input type="checkbox"/>	115Lu/ft. 3.0w/ft
	3RE/3RE	<input type="checkbox"/>	230Lu/ft. 6.0w/ft (req'd with PL525)
	7RE	<input type="checkbox"/>	225Lu/ft. 6.4w/ft
	7RE/7RE	<input type="checkbox"/>	450Lu/ft. 12.8w/ft (req'd with PL525)
Color	279	<input type="checkbox"/>	2700K, 90+CRI
	309	<input type="checkbox"/>	3000K, 90+CRI
	359	<input type="checkbox"/>	3500K, 90+CRI
Length	xx	<input type="checkbox"/>	Up to 120" with one-piece lens; Longer lengths require multiple lenses
	PAT	<input type="checkbox"/>	For mitered ends or patterns
Finish	NA	<input type="checkbox"/>	Natural Anodized
	BK	<input type="checkbox"/>	Black
Units	mm	<input type="checkbox"/>	mm
	in	<input type="checkbox"/>	inches
Options	CL2P35	<input type="checkbox"/>	35ft Plenum rated jumper cable (replaces 10' standard cable)
	EC	<input type="checkbox"/>	End Caps on lens for surface mounting

Environmental Data

Operating ambient -20C (-4F) to 30C (86F)
No Mercury, No UV
Warranty: 5 Years
ETL Listed per UL 2108 & compliant with NEC Article 410.16(A)
(1) & (C)(5) for use in closet storage areas



Plank Series

R-FLV Driver

Forward phase low voltage remote mounted power supply with 24Vdc Constant Voltage output for simple class 2 installation. 20W, 40W, 60W or 96W; 120V 60Hz input. Minimum 50% watt load required; e.g. 10W on ELV20
Dims to 20% with forward phase 2-wire magnetic low voltage dimmer. Short circuit and overload protected.
Non-IC installations.
Listed for 90 C conductors with 1/2" trade size knock outs.
NEMA 3R enclosure.

R-xxx-UNV Drivers

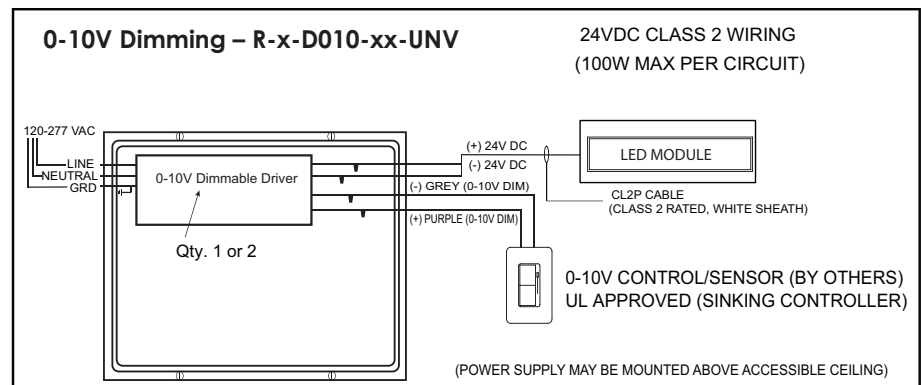
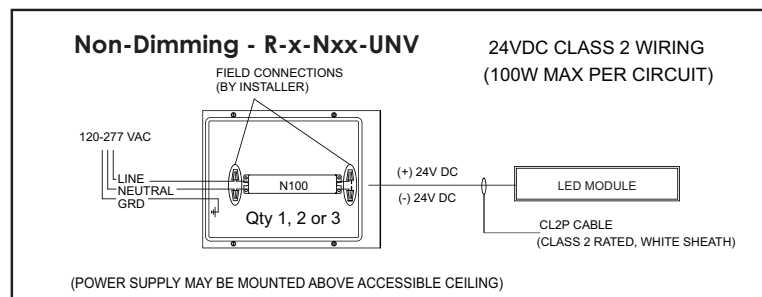
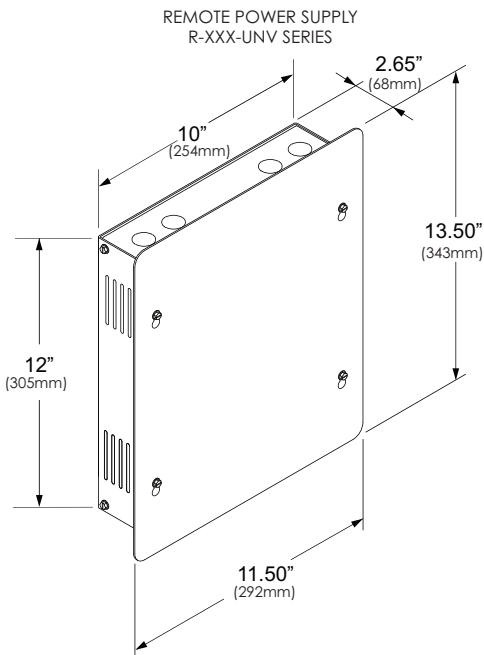
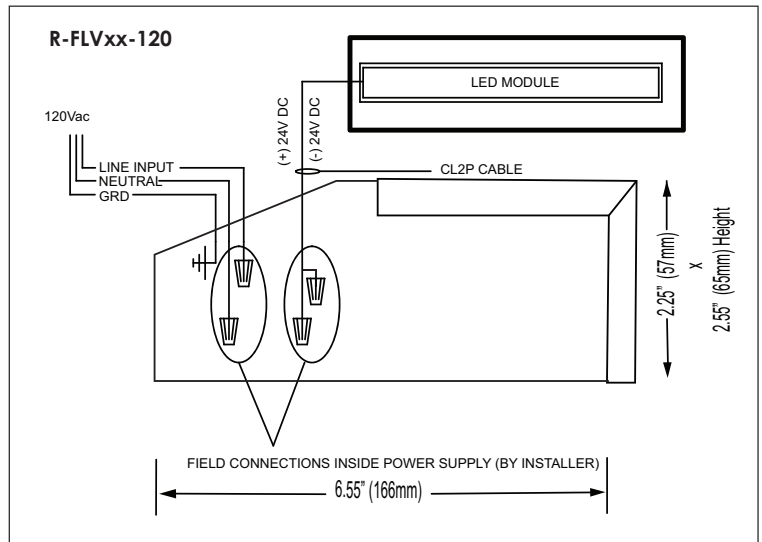
Remotely located power supply with 24Vdc Constant Voltage, or Constant Current, output for simple class 2 installation.
Electronic Drivers 50/60 Hz, 120 thru 277 input.
Choice of 0-10V dimming or switched on/off. Dimmable drivers with 3KL, 1ML, or 2ML may flicker below 10%. Use Constant Current version to dim to 1%.
Nxx requires 8W and D010 requires 20W minimum load
Type A Sound Rating,
Non IC installations standard; consult factory for IC installation.
May be surface mounted or recessed in 2x4 walls or above accessible ceilings.
Housing is die formed 16ga CRS with White painted after fabrication finish.
Listed for 90°C conductors with 1/2" trade size Knock Outs.

Driver*	R	<input type="checkbox"/> Remote
Drive Qty Per	-	<input type="checkbox"/> Blank for FLV
Power Supply	X	<input type="checkbox"/> Factory determined with N100 or D010 type
Type	FLVxx	<input type="checkbox"/> Forward phase low voltage, 20, 40, 60 or 96W
	Nxx	<input type="checkbox"/> Non-dim 100W max.
	D010	<input type="checkbox"/> Dimming via 0-10Vdc
	D010-CC	<input type="checkbox"/> **Constant Current (2.0-8.0w/ft)

Voltage	UNV	<input type="checkbox"/> Universal 120-277V for N100 or D010 type
	120	<input type="checkbox"/> 120 only for FLV type
	CP	<input type="checkbox"/> Chicago Plenum rated enclosure

*Constant factor for DALi, DMX & Lutron driver options.

**Constant Current requires a factory programmed driver for each LED panel.





Plank Series

Photometric Data



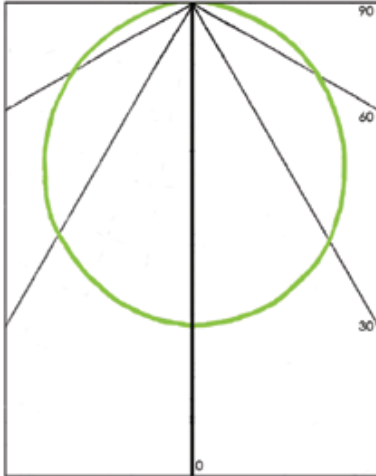
Lighting Sciences

Independent Test No. 27940 (prorated)

LED cat number: PL325-7RE-359-24-in
Advance Driver: LED-1HTA-OO12V50-FO operating at 120v
Total Lumen: 901

This is an absolute test.
Luminous Length: 24"
Width: 3.25"

Candlepower Distribution (cd)



Angle	Along	45°	Across
0°	130	130	130
5°	129	129	129
10°	128	127	127
15°	124	125	124
20°	120	121	120
25°	115	116	115
30°	109	110	109
35°	102	103	102
40°	94	95	94
45°	85	87	86
50°	76	77	76
55°	66	68	67
60°	56	58	57
65°	46	47	47
70°	36	37	36
75°	26	27	26
80°	16	17	16
85°	7	8	7
90°	0	0	0

Preliminary Data

Zonal Lumen Summary

Zone	Lumen	% Luminaire
0-30°	100	27.26
0-40°	163	44.52
0-60°	288	78.37
0-90°	367	100
40-90°	204	55.48
60-90°	79	21.63
90-180°	0	0
0-180°	367	100

Luminance Data (cd/m2)

Angle	Along	45°	Across
45°	3349	3434	3402
55°	3206	3292	3260
65°	3032	3137	3086
75°	2799	2913	2767
85°	2238	2483	2266