



# Company Brochure 2025

**blyth** civils

Big enough to deliver,  
small enough to care.



# About Blyth Civils

Blyth Civils is a trusted groundworks and civil engineering contractor, delivering high-quality infrastructure solutions across residential, commercial, and public sector developments.



## // About Blyth Civils

**As part of The Blyth Group, founded in 1986, we combine the strength and operational experience of an established construction group with the specialist capability and agility of a dedicated civils contractor.**

Our expertise covers the full range of civil engineering works — from site preparation and enabling works through to complex infrastructure delivery. We operate with a focus on quality, safety, and efficiency, ensuring that every project meets the highest standards of construction and compliance.

Blyth Civils partners with developers, main contractors, and local authorities to deliver reliable, cost-effective solutions that support the successful delivery of major developments. Our reputation is built on technical competence, operational excellence, and a collaborative approach that places our clients' objectives at the centre of every scheme.





# Our Services

Blyth Civils delivers a comprehensive range of groundworks and civil engineering services, supporting clients from initial site preparation through to final external works. Our teams bring technical expertise, disciplined site management, and a collaborative approach to every stage of delivery.



## // Our Services

---

### Enabling Works

Site clearance, bulk excavation, earthworks, and preparation of development platforms to programme and specification.

---



### Foundations & Substructures

Installation of traditional and engineered foundation systems, floor slabs, and associated substructures.

---



### Drainage & Sewerage Installations

Comprehensive installation of foul and surface water drainage systems, adoptable sewers, and associated infrastructure in compliance with regulatory standards.

---



### Roads & Infrastructure

Delivery of highways, drives, utilities, and service connections, ensuring fully integrated and coordinated infrastructure for each site.





## // Our Services

---

### External Works

Construction of drives, footpaths, car parks, and hard landscaping to create functional and durable external environments.



### Retaining Features

Design and engineering of a range of retaining structures including masonry, king post, sheet piling, gabion baskets, tobermore & Huesker.



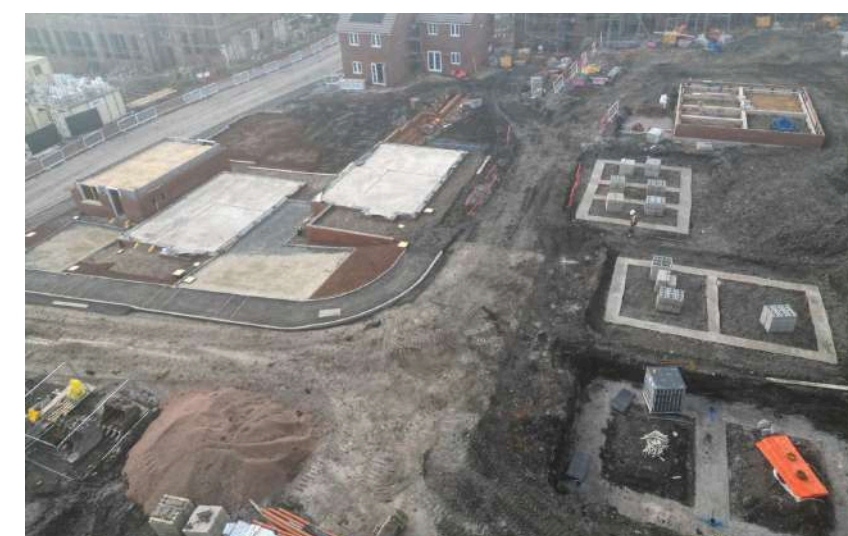
### Section 278's & 184's

Offsite works carried out to the highest of standards working coincide with councils and clerk of works.



### Full Civil Engineering Packages

End-to-end civils delivery across multi-plot residential schemes, commercial developments, and public sector infrastructure.





# Our Projects

Blyth Civils has a proven track record of delivering groundworks and civil engineering packages across a range of residential and mixed-use developments. Working collaboratively with clients, design teams, and statutory authorities, we ensure each project is executed to the highest standards of quality, safety, and compliance.

Our approach is rooted in early engagement, clear communication, and disciplined delivery — ensuring that infrastructure and groundworks are completed on time, within budget, and to specification.



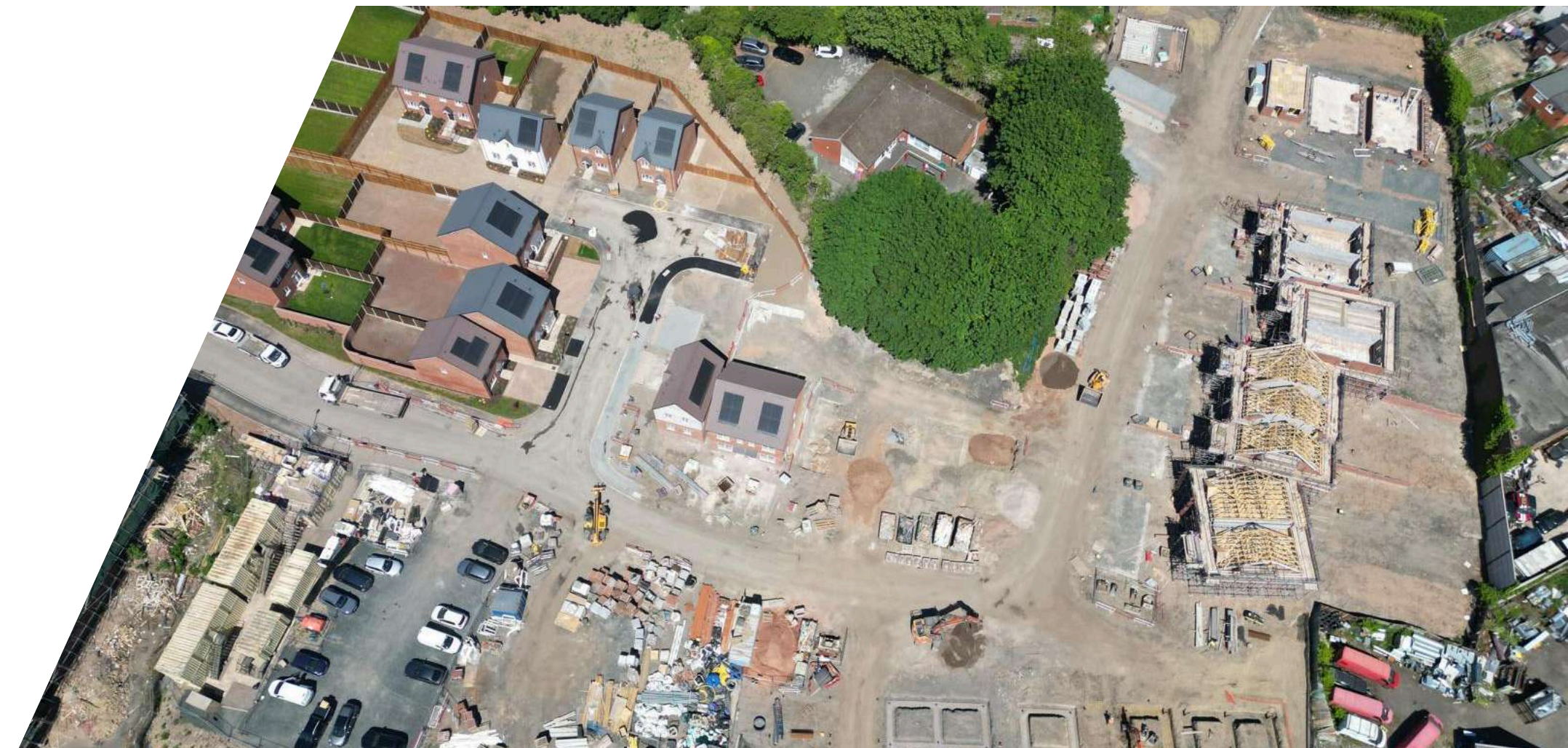
# Blowers Green

Client:  
**Halo Living**

Scope:  
**Full Groundworks & Civil Engineering Package**

**Blyth Civils was appointed to deliver the complete groundworks and infrastructure package for this major residential development.**

Our works included site preparation, foundations, drainage, and service installations, as well as external works to support the construction of high-quality homes. As a sister company of The Blyth Group, our integrated delivery model provided the client with a seamless interface between infrastructure and construction, ensuring technical accuracy, programme certainty, and operational efficiency throughout the build.





# Monmouth Road

Client:  
**Private Developer**

Scope:  
**Full Groundworks Package**

**Blyth Civils has recently secured the groundworks contract for a new residential development in Birmingham.**

Our remit includes enabling works, foundations, drainage installations, and associated infrastructure. This project represents the beginning of a new client partnership, and we look forward to delivering the scheme to our exacting standards.





# Why Blyth Civils?

Blyth Civils is built on a foundation of technical excellence, operational discipline, and long-standing industry experience. As part of The Blyth Group — established in 1986 — we combine the strength and resources of a well-established construction group with the specialist focus of a dedicated civil engineering contractor.



## // Why Blyth Civils?

**Our clients value our ability to deliver high-quality groundworks and infrastructure solutions with precision, reliability, and accountability. We operate with a partnership mindset, working collaboratively with developers, main contractors, and public sector bodies to achieve shared objectives.**

- Proven track record delivering civil engineering and groundworks projects across residential, commercial, and public sector developments.
- Backed by the heritage and operational strength of The Blyth Group.
- Collaborative approach, engaging early to de-risk programmes and optimise delivery.
- Experienced management teams and skilled workforce.
- Strong emphasis on safety, quality, and regulatory compliance.
- Flexible and responsive service tailored to project requirements



# Testimonials



## // Testimonials

---

Stellify Build Ltd  
**Ian Gittins**

"Blyth Civils delivered a large groundworks package for us on our Birmingham scheme for 23 apartments. They are a professional outfit and managed the works safely and to an agreed programme and budget. I look forward to working with them on our next scheme."

---

Halo Living  
**Simon Blower**

"Cory Byrne and his team have shown professionalism from inception of our current 60 unit housing scheme to the present day. The attention to detail has been second to none. Works are carried out to an exacting standard and in a manner that demonstrates that they take care and pride in the work delivered."

Cost saving measures have been introduced through understanding cost efficient ways to deliver the foundations and works up to DPC. The site is well managed, which is demonstrated through the tidiness of the works and materials are managed in a safe manner. All in all we are very impressed by the delivery of the groundworks package on our site, and would not hesitate to use them again going forward. Pleasure to work with."

---

MA2 – Clerk of Works for WCC  
**Mike Wilson**

"Having been employed by MA2 for the past three years as Clerk of Works for WCC overseeing the construction of S38 and S278 builds within Worcestershire, I have worked with Cory on numerous schemes. Having been in the industry for some 40 years, first impressions count. I was not disappointed, from day one of our first introduction at a pre-start meeting on a S38 in Stourport he had done his homework on the scheme and had a list of questions for me."

This filled me with confidence of a good working relationship and a quality build. Cory's strengths, his depth of knowledge within Construction, his ability to motivate a team, command a presence within meeting and ensure his point of view is heard. Dealing with personnel, members of the public, client and contractors, he makes time for them all and willingly openly discusses any issues. Willingness to learn and overcome problems."

For me personally, in an industry where the majority of "Black Hats" are towards the end of their career, it is a pleasure to see a young man building his career and I can confidently state I would have no hesitation in recommending Cory for any aspect of construction."



# Health & Safety

Health and safety is the most imperative part of our day to day operations, From initial planning to execution, our wellbeing and everyone around us is of upmost importance. We, as well as everybody else want our people and yours to go home safe to their families after every shift and we strive to do everything we can to make that happen.



**We have a highly trained team of health and safety representatives monitoring and executing all our client's needs and to ensure the safety of our people and others working around them.**

**All employees and contractors across our sites receive an extensive induction when joining Blyth Civils to ensure they are aware of our strict views towards health and safety.**

We maintain a strict regime of keeping all of our operatives up to date and accredited via the CSCS or NPORS card scheme.

We have invested in Procore and Chime, Software's that help track and monitor not only day to day operations but the health and safety across our sites and any updates that are needed.

Procore allows us to record installation on site helping in the safety of teams that will be working in and around the same areas in the future. Take Utilities installation as an example, we can record and pinpoint exactly where utilities have been installed by using Procore's bespoke imagery and GPS system.

Chime allows us to keep track of all our operatives on site and record any health and safety issues that may occur. With a live signing in document we can verify who is on site at any time helping to pinpoint in the event of an emergency. We also deliver and record weekly tool box talks via Chime and keep up to date RAMS and method statements for client perusal.



# Our People



Director

**Cory Byrne**

**I was introduced to the civil engineering world at a very young age and since then I've always had a strong passion for construction.**

I worked my way up from the bottom and gained 10+ years' experience project managing developments across the UK for industry leaders absorbing what makes a business successful and sets them apart from the rest.

For me the most important piece of Blyth Civils is its people, from the operators on site to the procurement team in the background. Having the right personnel working side by side makes for a strong team. Investing our time in to our people gives us as senior management the confidence to deliver contracts efficiently, safely & to the standards our clients expect.





Site Supervisor

**Brady Byrne**

**At Blyth Civils, we believe our success is built on our people.**

---

We foster a supportive and inclusive culture where teamwork, respect, and pride in workmanship come naturally. Our employees are valued for their contributions and encouraged to grow within a positive, collaborative environment.

Whether on-site or in the office, every member of the team plays an important role in delivering high-quality results and upholding the standards that define Blyth Civils.

Finance Manager

**Tim Taylor**

**When I was offered the opportunity to join Blyth Civils, I didn't hesitate.**

---

The company's core values and vision aligned perfectly with my own. With eight years of experience in the construction sector, specialising in finance and commercial operations, I have a strong passion for developing processes and programmes that streamline how we work and think.

I believe that delivering effective results behind the scenes builds long-term stability and creates the foundation for continuous growth, enabling us to look confidently toward an exciting future.



[theblythgroup.co.uk](http://theblythgroup.co.uk)

blyth **civils**